

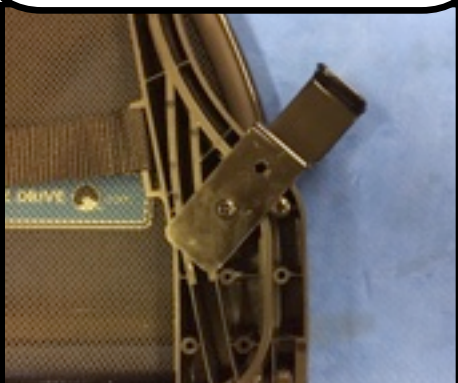


We have our video install guides on our website and on youtube.com. Also feel free to call or email us if you have any questions  
1-855-457-5683  
info@lovethedrive.com

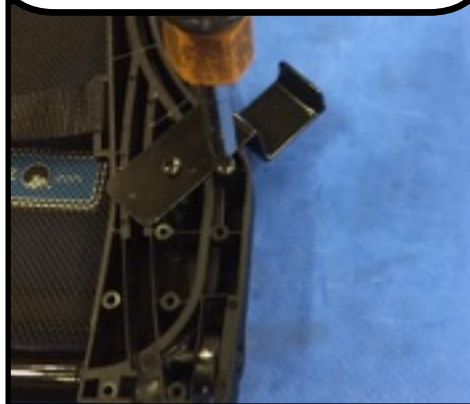
# Mustang with Lightbar 2005 to 2014 Love The Drive Wind Deflector Install Guide

- \* You can raise and lower your convertible top with the wind deflector installed.
- \* The wind deflector will fit in the trunk when not in use.
- \* Your wind deflector is designed not to touch your lightbar. It should sit 1/4 of an inch away from your lightbar.

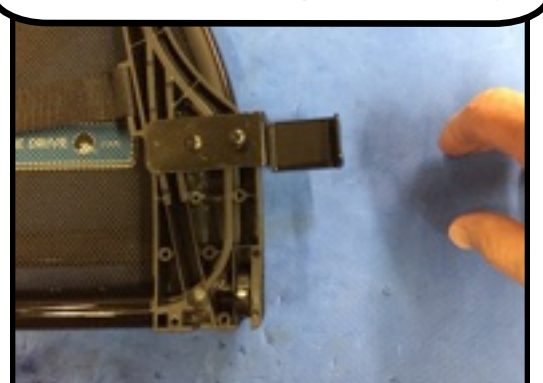
To fit your wind deflector into the box we had to turn one of your front brackets. You will need a philip screw driver (the one that looks like a X)



Remove the screw that is not inserted into the bracket. Turn the bracket towards the front of the wind deflector so it is straight.



Once you have turned bracket, insert the screw into the hole and tighten. The bracket in the photo below is installed correctly. You are now ready to install your wind deflector on your Mustang.



Your new Love The Drive wind deflector can be installed in 30 seconds. It sits in the back seat area and is held in place by four brackets. There are two on each side.



The wind deflector stays securely in place using four straps. Two straps attach to your car's child seat anchoring system and two straps attach to the side trim panels, beside the bottom seat.



**STEP 1:** Start by lowering the folded wind deflector into the back seat area so the brackets fit onto each side of the trim panel.



Below is a close up to show the two brackets on the trim panel on one side. You may need to adjust the rear brackets to fit tightly against the trim panel.



**STEP 2:** Next you need to attach the four straps. The two rear straps with the black snap hooks will clip onto the child seat anchoring system.



On your rear seats there will be a small circle with a child seat picture to show you where the anchors are. The black snap hooks, are inserted with the snap facing down. Slide the hook into the hole, press down and then pull back up towards you to secure the snap hook into place.



The other two straps will attach to the bottom of the trim panel on each side of the back seats. Once all four of the straps are connected, the wind deflector is installed and you are ready to go.

