



*spring*  
**2024**

*Park Cities Presbyterian Church*



welcome

**TO PARK CITIES PRESBYTERIAN CHURCH**

I want to welcome you to PCPC. We know there's a lot in this Spring Guide, but we hope it's more than a menu, more than a flood of information. We want to shepherd you toward being a healthy member or participant in the life of our church.

As you consider where the Lord is calling you to *connect, abide, and extend*, our hope is that you will:

- Join us regularly in corporate worship on Sundays at 8:00 (Chapel), 9:30 & 11:00 a.m. (Sanctuary).
- Find a community that makes the big church smaller and helps you become more like Jesus (see the "Connect" section in this guide).
- Find a way to serve the Lord inside or outside the walls of the church (see the "Extend" section in this guide).

Some of our people get involved in more than one smaller community, and some find more than one way to serve. It is not our desire that you would do everything, but that the Lord would lead you to a few things that help you *connect, abide, and extend*. If you can only do one thing, we hope that you'll prioritize the joy of worshiping the Lord together on Sunday morning.

– Mark Davis, Senior Pastor

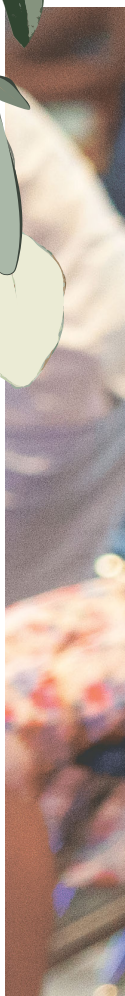
*spring*  
**2024**

*Park Cities Presbyterian Church*

*Park Cities Presbyterian Church exists to extend the transforming presence  
of the Kingdom of our Lord Jesus Christ in Dallas and to the world.*



*To all who are  
spiritually weary  
and seek rest;  
to all who mourn  
and long for comfort;  
to all who struggle  
and desire victory;  
to all who sin and  
need a Savior;  
to all who are  
strangers and  
want fellowship;  
to all who hunger  
and thirst after  
righteousness;  
and to all who will  
come, this church  
opens wide her doors  
and offers welcome  
in the name of the  
Lord Jesus Christ.*





# connect

## TO CHRIST AND ONE ANOTHER

### CHILDREN

We want to provide a safe, loving environment as we connect our youngest disciples to the love of God through Jesus Christ. Our hope is to partner with parents as they prepare their children for a lifetime of abiding in Christ and extending Him to others. We have a nursery for 3 months through 3 years old (Lower Level), classes for preschoolers 3 years old through kindergarten (Level One), and elementary-age kids 1st to 5th grade (Level Two).

FIRST FRIDAY & BEFRIEND | ongoing

COMMUNICANTS CLASS | begins January 14

PARENTING AHEAD CLASS | begins January 17

MOM & SON DESSERT WARS | February 9

EASTER SONG & STORY | March 29

PARENT EQUIPPING | April 24

VACATION BIBLE SCHOOL | June 4-7

SKY RANCH DAY CAMPS | June 10-14 & June 17-21

**[kids@pcpc.org](mailto:kids@pcpc.org) | [pcpc.org/kids](http://pcpc.org/kids)**

### SUNDAY MORNING COMMUNITIES

Sunday Morning Communities (SMC) cultivate a space for adults to connect more deeply to Christ through the teaching of God's Word in fellowship with one another. Each SMC varies in size and reflects the unique character of what its members share in common, even as it extends an invitation to all—young and old, single and married, those with children and those without.

**[pcpc.org/communities](http://pcpc.org/communities)**



## CHOIRS

Our choirs are filled with people who love God, love to sing, and love to help others sing. We welcome new members, kindergarten through adult.

CHANCEL ADULT CHOIR

CHILDREN'S & YOUTH CHOIRS

MUSIKGARTEN

**[pcpc.org/choirs](https://pcpc.org/choirs)**

## MARRIAGE

We long to see vibrant relationships that reflect God's love for us in the Gospel. Our marriage ministry serves pre-married, newly married, and established married couples through classes such as UNION, our pre-marriage course, and re|engage, a course for all married couples. We also have Foundation Groups which are small groups for newlyweds that study and discuss biblical marriage.

UNION | begins January 16

FAMILY CAMPS | July 14-20, July 21-27, July 28-August 3

**[pcpc.org/marriage](https://pcpc.org/marriage)**

## MEN

PCPC offers opportunities for men to abide in God's Word, share life, and extend Christ to others.

MEN'S CARE GROUPS | Spring & Fall Semesters

TUESDAY MORNING MEN'S BIBLE STUDY | begins January 16

FOCUS BIBLE STUDY FOR MEN, WOMEN, & COUPLES | begins January 17

**[pcpc.org/men](https://pcpc.org/men)**

## NEW MEMBER CLASS

This class meets on Sunday mornings in the fall and spring and serves both as an introduction to our church as well as a guide towards membership.

SPRING CLASS | begins January 14

**[pcpc.org/membership](https://pcpc.org/membership)**

## PARISH MINISTRY

A parish makes the big church smaller as we seek to live as Christ's people in the places where He has called us.

**[connect@pcpc.org](mailto:connect@pcpc.org) | [pcpc.org/parish](https://pcpc.org/parish)**

*What group are you a part of that helps you connect with others at PCPC?*

## THIRD THIRD & SENIOR ADULTS

The focus of this ministry is on the more mature and experienced in life and faith who have a need for learning, fellowship, and sharing with others in ministry.

DON'T GET SCAMMED LUNCHEON | January 12

THIRD THIRD LUNCHEONS | February 18, April 28, May 19

VALENTINE LUNCH | February 14

SENIOR ADULT BIBLE STUDY | begins April 26

**[pcpc.org/calendar](http://pcpc.org/calendar)**

## VESPERS

Every Wednesday, we gather at 5:30 p.m. in The Chapel for a brief evening prayer service that features a contemplative liturgy of prayers, Scripture readings, hymns, and Communion.

## WOMEN

We offer many places for women to connect, abide, and extend Christ through studying the Word of God, praying boldly, and sharing the Gospel. We want YOU to be part of growing in God's family with us this year!

BIBLE STUDIES | begin January 16-18

LENTEN PRAYER | February 14

SEMI-SILENT RETREAT | March 1-2

THE BRIDGE: WHAT'S HER STORY? | March 5 & June 11

SHARE: EQUIPPING EVENT | April 12-13

**[pcpc.org/women](http://pcpc.org/women)**

## YOUNG ADULTS

This ministry serves three different life stages—singles, couples, and families—who are primarily, but not absolutely, in their 20s to late 30s.

SOLITUDE SATURDAY | January 27

THE BIG GAME | February 11

NIGHT OF WORSHIP | March 21

VOLLEYBALL | April 7

TWO-STEPPING | MAY 2

**[ya@pcpc.org](mailto:ya@pcpc.org) | [@pcpcya](https://www.instagram.com/pcpcya)**

## YOUTH

We believe that relationships are crucial for discipleship, so we offer multiple ways for students to build relationships with one another and with our team of staff and volunteers. Our middle school and high school communities meet on Sunday mornings and in smaller groups throughout the week.

COMMUNICANTS CLASS | begins January 14

M.S. BASKETBALL | January 15

H.S. THE GATHERING | January 10, February 21, March 20, April 24

M.S. VALENTINE PARTY | February 14

H.S. FLORIDA TRIP | May 25-31

**[pcpc.org/youth](http://pcpc.org/youth)**



# abide IN CHRIST

## BIBLE STUDIES

We have weekly Bible study opportunities for men, women, couples, youth, young adults, and senior adults. (see weekly schedule for day and time)

Spring Semester – begins January 16-18

[pcpc.org/calendar](https://pcpc.org/calendar)

## CHRISTIAN FORMATION

Christian formation cultivates an abiding life in Christ by participating in the work of God's free grace. It is the path of discipleship whereby we are renewed in our whole person—heart, mind, body, and soul—to become more like Jesus Christ, the true image of God, and are empowered to turn more and more away from sin, and live more fully to the glory of God.

WINTERGRACE | February 3-4

DISCOVERY INSTITUTE CONFERENCE | February 17

RENEWAL COURSE | begins February 18

COHORT | Fall to Spring

[pcpc.org/christian-formation](https://pcpc.org/christian-formation)



## COUNSEL & CARE

We believe that the Church is God's instrument to CARE for people as they really are, in all the unique ways God has created each person as an individual, and in all the difficult ways that brokenness, doubt, and frustration have come to bear on his or her story.

DEEPLIGHT PODCAST – Search "DeepLight Podcast" on your favorite platform

DIVORCECARE | Spring & Fall

MEN'S CARE GROUPS | Spring & Fall

WOMEN'S CARE GROUPS | Spring & Fall

[pcpc.org/care](https://pcpc.org/care)

## PRAYER

Prayer is a key component to abiding in Christ. We have All-Church Prayer, Abide: A Prayer Guide, and other opportunities to grow in prayer.

ALL-CHURCH PRAYER | January 14 & April 14

PRAYER FOR MISSIONARIES & CHURCH PLANTERS | 2nd Sundays

WOMEN'S LENTEN PRAYER | February 14

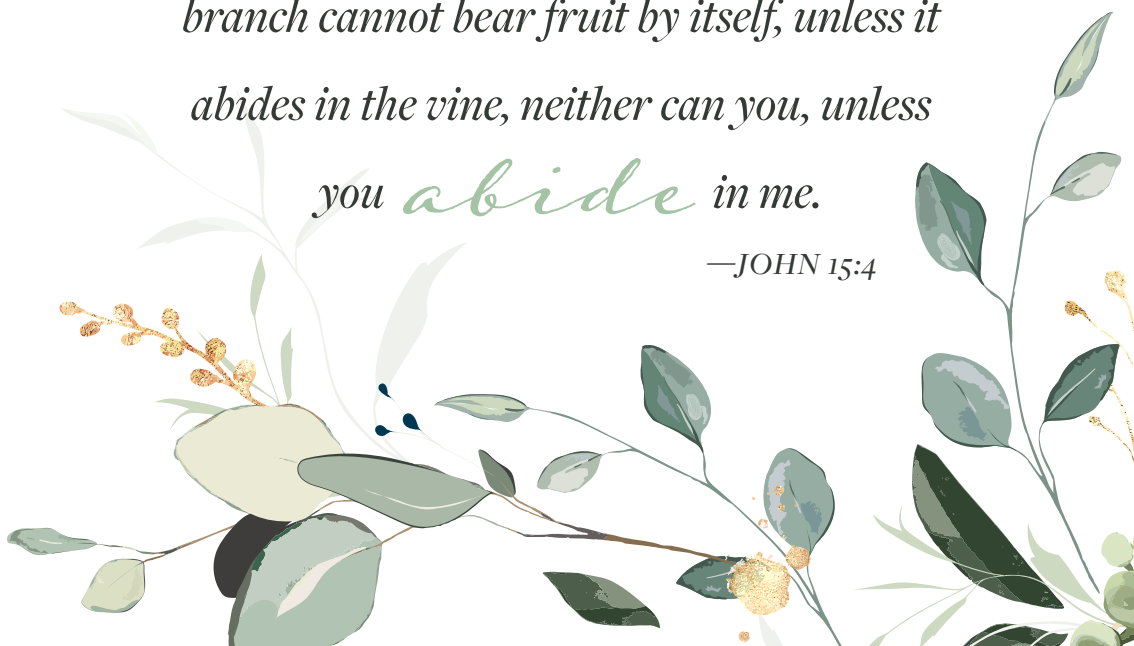
WOMEN'S SEMI-SILENT RETREAT | March 1-2

[pcpc.org/events](https://pcpc.org/events)

*Are you abiding in Christ  
through Scripture and prayer?*

*Abide in me, and I in you. As the  
branch cannot bear fruit by itself, unless it  
abides in the vine, neither can you, unless  
you **abide** in me.*

—JOHN 15:4







# extend

## CHRIST

### YOUR CHURCH

PCPC has many volunteer opportunities including PCPC Kids, Helping Hands, First Friday & bFriend, and our Frontline Ministry. Begin today!

**[pcpc.org/volunteer](https://pcpc.org/volunteer) or PCPC app**

### YOUR CITY

#### CITY MISSIONS

We encourage and equip PCPC members to extend Christ through Gospel-centered relationships and cross-cultural ministry, especially with the least, the lost, and the lonely. We seek to raise awareness for issues faced within an inner-city context, serve alongside our ministry partners, and be the hands and feet of Christ to our neighbors in Dallas.

HELPING HANDS | March 23

CHURCH IN THE CITY | April 14

PROJECT WORKDAY | April 20

**[pcpc.org/city-missions](https://pcpc.org/city-missions)**

#### INTERNATIONALS IN DALLAS

PCPC longs to be a community that is disciplined to be welcoming, teachable, and transformed through cross-cultural immersion with the nations that God sends to our doorstep. Our members are engaged in refugee, immigrant, and international student ministry in Dallas through relationships with ministry partners Reformed University Fellowship International (RUF-I), Cristo Rey, Vickery Trading, Casa del Lago, and our own English as a Second Language (ESL) program.

ESL | Spring & Fall Classes

PARENTS NIGHT OUT | February 2 & May 3

RUF-I Events | February 9, March 1, & May 4

SUMMER RUF | June 5-July 31

**[pcpc.org/global-local](https://pcpc.org/global-local)**

## PERFORMING ARTS

The PCPC concert series exists to proclaim the excellencies of Jesus Christ through music and other artistic media. These public events are presented each year by our church choirs as well as many guest artists. All concerts are free of charge and open to the public.

ADKINS & NIELSON | January 21

ANDREW PETERSON | February 3

LENTEN ORGAN SERIES | Wednesdays, February 21-March 20

GOOD FRIDAY - LAMB OF GOD | March 29

NATHAN DAVY | June 9

**[pcpcconcerts.org](http://pcpcconcerts.org)**

## YOUR WORLD

### WORLD MISSIONS & CHURCH PLANTING

"What goes deepest to the hearts goes widest to the world." At PCPC we envision a church where every member is a world Christian who understands the "global-ness" of the Church's mission, laments over those who have no hope of hearing the Gospel, and is eager to serve the purposes of God globally.

MISSIONARY MAILINGS | February 11

McALLEN FAMILY MISSION TRIP | March 12-16

FAMILY LEGACY FOOD PACKING | April 27

MIDDLE SCHOOL MISSION DALLAS | June 17-20

SENEGAL HIGH SCHOOL MISSION TRIP | June 21-29

SENEGAL FAMILY MISSION TRIP | June 28-July 6

BAHAMAS FAMILY MISSION TRIP | June 30-July 6

**[pcpc.org/world](http://pcpc.org/world)**

*Go therefore and make  
disciples of **all** nations*

—MATTHEW 28:19





# weekdays

AT PCPC

## MONDAY

- |           |  |
|-----------|--|
| 9:00 A.M. | Musikgarten (Babies/Toddlers)            |
| 9:00 A.M. | Mom's Chapel School Co-op (Preschoolers) |
| 9:30 A.M. | English as a Second Language (ESL)       |

## TUESDAY

- |           |   |
|-----------|---|
| 7:00 A.M. | Men's Tuesday Morning Bible Study (Men) |
| 9:30 A.M. | Precepts (Women)                        |
| 9:50 A.M. | A Mother's Heart (Women)                |
| 7:00 P.M. | UNION (Pre-Marriage)                    |
| 7:00 P.M. | English as a Second Language (ESL)      |

## WEDNESDAY

- |           |   |
|-----------|---|
| 7:00 A.M. | Early Morning Bible Study (Women)         |
| 9:30 A.M. | English as a Second Language (ESL)        |
| 9:30 A.M. | Wednesday Watchmen (Women)                |
| 4:00 P.M. | Cherub Choir (4-5 year olds)              |
| 4:30 P.M. | Carol & Chapel Choirs (Grades K-1 & 2-4)  |
| 5:00 P.M. | Covenant Choir (Grades 5-8)               |
| 5:30 P.M. | Midweek Dinner                            |
| 5:30 P.M. | Midweek Vespers Service                   |
| 6:00 P.M. | Christian Formation Cohort                |
| 6:00 P.M. | Middle School Small Groups (Youth)        |
| 6:45 P.M. | DivorceCare (Care/Counseling)             |
| 6:45 P.M. | Focus (Men, Women, & Couples Bible Study) |
| 7:00 P.M. | Chancel Choir (Adult)                     |
| 7:00 P.M. | Young Women's Bible Study                 |

## THURSDAY

- |            |                                      |
|------------|--------------------------------------|
| 8:45 A.M.  | Power & Praise (Women)               |
| 10:00 A.M. | Thursday Morning Bible Study (Women) |
| 7:00 P.M.  | English as a Second Language (ESL)   |
| 7:00 P.M.  | Men's Care Groups (Care/Counseling)  |

Scan the QR code or  
visit [pcpc.org/calendar](https://pcpc.org/calendar)  
for more information.



## DEEPLIGHT PODCAST

Season 4 of Deep Light will launch this spring. Come listen to real stories of hope found in Jesus Christ. We will look at several topics including trauma. We encourage you to listen and share past episodes and seasons which are available wherever you get your podcasts or at [pcpc.org/deelight](https://pcpc.org/deelight).



Search "Deep Light Podcast" on your favorite platform.

## THE REVELATION OF JESUS CHRIST - SERMON SERIES

This spring, we invite you to join us on Sunday mornings as we continue in our sermons series on The Revelation of Jesus Christ. From the first verse to the last, the book of Revelation is all about Jesus Christ. He is the Alpha and the Omega, the Lion and the Lamb, the Bridegroom who is coming for His Bride, and the King who will one day return to make all things new. If you would like to listen to any of the first part of this series, you can catch up on the PCPC app, website, or podcast.

[pcpc.org/resources](https://pcpc.org/resources)

## MY PCPC PROFILE AND NEWSLETTERS

Have you moved lately or had a change of email? Please take a few minutes to update your PCPC profile. [my.pcpc.org/portal](https://my.pcpc.org/portal)

Would you like to receive e-mail newsletters from PCPC's e-This Week, Every Thought Captive Devotional, Kids, Youth, Women, Third Third or Missions? Add or update your PCPC newsletter subscriptions.

[pcpc.org/newsletters](https://pcpc.org/newsletters)

## PCPC MOBILE APP

With the PCPC app, you can check your kids in on Sunday, see upcoming events and volunteer opportunities, watch and listen to sermons and other resources including Every Thought Captive devotional, Deep Light Podcast, and online giving.

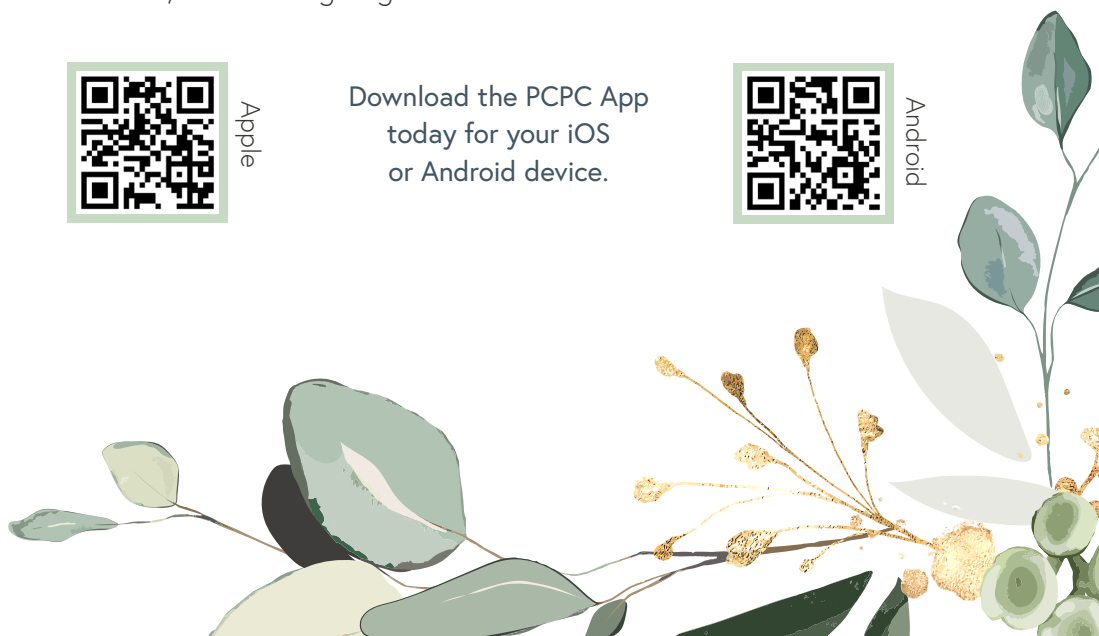


Apple

Download the PCPC App  
today for your iOS  
or Android device.



Android



## SPECIAL EVENTS AT PCPC

SPRING KICKOFF | January 14-20

WINTERGRACE | February 3-4

WOMEN'S SEMI-SILENT RETREAT | March 1-2

HOLY WEEK & EASTER SUNDAY | March 24-31



### WINTERGRACE

Please be sure to save the date for our annual WinterGrace event the weekend of February 3-4, 2024. WinterGrace is an on-campus retreat for our whole congregation to be refreshed in God's grace through fellowship, learning, music, and worship. This year our theme will be, "God's Grace in Suffering," and we are excited that singer-songwriter and author Andrew Peterson and pastor and author Kevin DeYoung will be with us for the weekend.

[pcpc.org/wintergrace](https://pcpc.org/wintergrace)

### RESTORE: WOMEN'S SEMI-SILENT RETREAT

This women's silent retreat will be held at the beautiful Longhorn Mesa Ranch, tucked away between the small Texas towns of Glenrose and Hico. While this retreat is primarily done in silence, there will be times of devotional teaching and opportunities for fellowship over meals. Come and experience 24 hours of rest for your soul as you leave behind the busyness of life and spend focused time alone with God.

[pcpc.org/women](https://pcpc.org/women)

### HOLY WEEK

Holy Week (March 24-31) is beloved not merely for the beautiful music, added fellowship, or triumphant celebration, but for the way it helps fix our eyes on Jesus Christ. We will gather at 12-noon each day at PCPC, so together our hearts and minds can focus on our Lord and Savior Jesus. Thursday night will be our Maundy Thursday Communion Service, Friday morning will be our Preschool Song & Story, and Friday night will be a special performance of "The Lamb of God." Easter Sunday will be March 31. Begin inviting family and friends to participate in this beloved week.

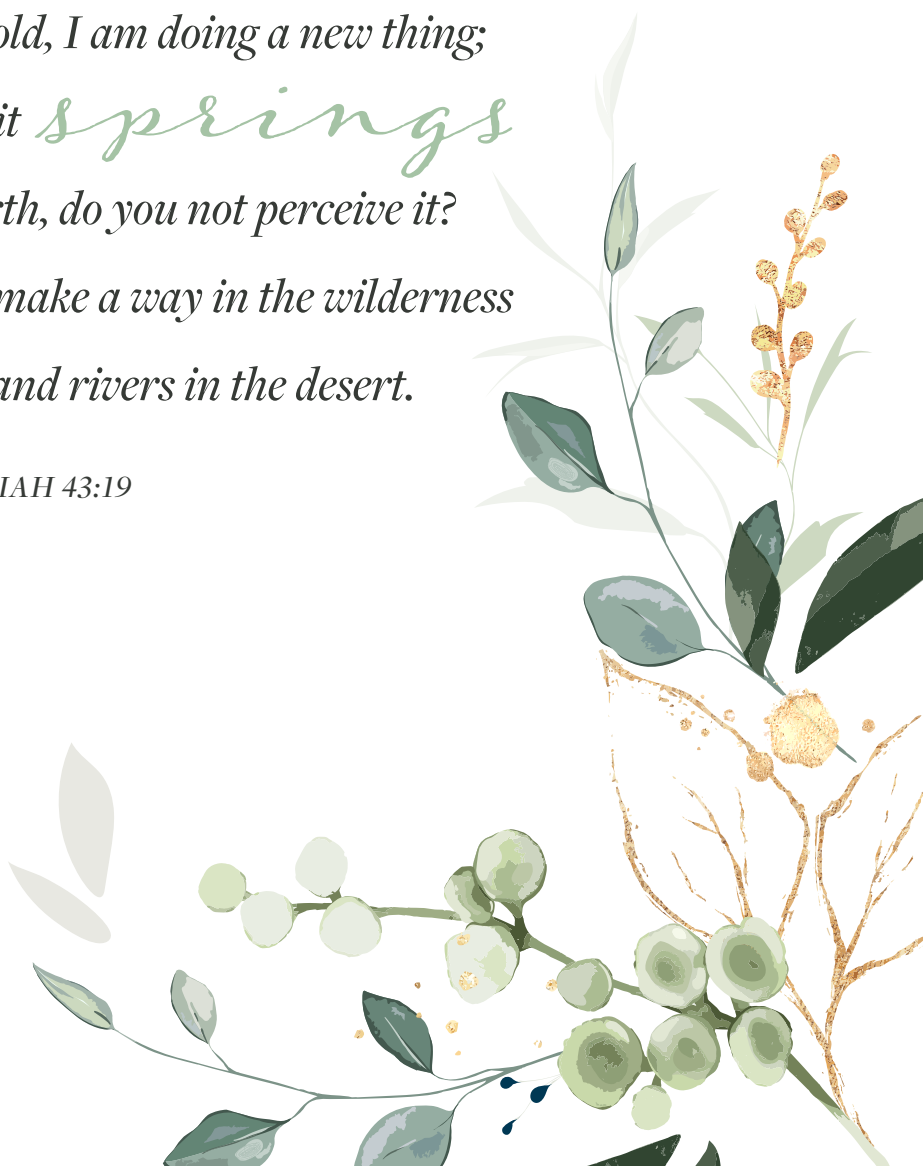
[pcpc.org/holyweek](https://pcpc.org/holyweek)



*Behold, I am doing a new thing;  
now it **springs**  
forth, do you not perceive it?*

*I will make a way in the wilderness  
and rivers in the desert.*

—ISAIAH 43:19





## *contacts*

MAIN OFFICE.....	214-224-2500
CHILDREN'S MINISTRY.....	214-224-2520
YOUTH MINISTRY.....	214-224-2762
LIBRARY.....	214-224-2673
BOOKSTORE.....	214-224-2573
MUSIC & ARTS.....	214-224-2638
PRAYER.....	214-224-2680



4124 Oak Lawn Avenue, Dallas, TX 75219-3152 | [pcpc.org](http://pcpc.org)  
follow @parkcitiespca on facebook, instagram, & twitter