



spring
2023

Park Cities Presbyterian Church

welcome

TO PARK CITIES PRESBYTERIAN CHURCH

I want to welcome you to PCPC. We are a church family that delights in celebrating the love that Jesus has for us. It is an exciting time to be at PCPC, and we are glad that you're here. I pray that the Lord will draw you closer to Himself as you get to know our church.

We hope this Spring Guide will be helpful to you as you explore ways to connect to Christ and one another, abide in Christ, and extend Christ in the coming months. We believe that healthy, fruitful Christians will be active in all three of these areas through their local church. So, as you browse the following pages, please consider how you and your family can join us this spring.

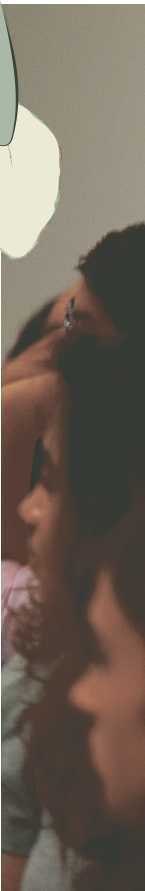
– Mark Davis, Senior Pastor

spring
2023
Park Cities Presbyterian Church

*Park Cities Presbyterian Church exists to extend the transforming presence
of the Kingdom of our Lord Jesus Christ in Dallas and to the world.*



*To all who are
spiritually weary
and seek rest;
to all who mourn
and long for comfort;
to all who struggle
and desire victory;
to all who sin and
need a Savior;
to all who are
strangers and
want fellowship;
to all who hunger
and thirst after
righteousness;
and to all who will
come, this church
opens wide her doors
and offers welcome
in the name of the
Lord Jesus Christ.*



connect

TO CHRIST AND ONE ANOTHER

SUNDAYS AT PCPC

Three corporate worship services are held Sunday mornings along with Sunday Morning Communities for all ages at 8:00 a.m. (Chapel), 9:30 a.m. & 11:00 a.m. (Sanctuary).

CHILDREN

We want to provide a safe, loving environment as we connect our youngest disciples to the love of God through Jesus Christ. Our hope is to partner with parents as they prepare their children for a lifetime of abiding in Christ and extending Him to others. We have a nursery for 3 months to 3-year olds (Lower Level), classes for preschoolers 3-year olds to kindergarten (Level One), and elementary-age kids 1st to 4th grade (Level Two).

FIRST FRIDAY | ongoing

MOM & SON DESSERT WARS | February 10

FAMILY EASTER SERVICE | April 2

EASTER SONG & STORY | April 7

PARENT EQUIPPING | April 12

VACATION BIBLE SCHOOL | June 4, 6-9

kids@pcpc.org | pcpc.org/kids

SUNDAY MORNING COMMUNITIES

Sunday Morning Communities (SMC) cultivate a space for adults to connect more deeply to Christ through the teaching of God's Word in fellowship with one another. Each SMC varies in size and reflects the unique character of what its members share in common, even as it extends an invitation to all—young and old, single and married, those with children and those without.

pcpc.org/communities



CHOIRS

Our choirs are filled with people who love God, love to sing, and love to help others sing. We welcome new members, kindergarten through adult.

CHANCEL ADULT CHOIR

CHILDREN'S & YOUTH CHOIRS

MUSIKGARTEN

pcpc.org/choirs

MARRIAGE

We long to see vibrant relationships that reflect God's love for us in the Gospel. Our marriage ministry serves pre-married, newly married, and established married couples through classes such as UNION, our pre-marriage course, and re|engage, a course for all married couples. We also have Foundation Groups which are small groups for newlyweds that study and discuss biblical marriage.

RE|ENGAGE | begins January 18

UNION | begins January 17

A NIGHT OF HOPE (Katherine & Jay Wolf) - April 27

FAMILY CAMPS | July 16-22, July 23-29, July 30-August 5

pcpc.org/marriage

MEN

PCPC offers opportunities for men to abide in God's Word, share life, and extend Christ to others.

MEN'S CARE GROUPS | Spring & Fall Semesters

TUESDAY MORNING MEN'S BIBLE STUDY | begins January 17

FOCUS BIBLE STUDY FOR MEN, WOMEN, & COUPLES | begins January 18

pcpc.org/men

NEW MEMBER CLASS

This class meets on Sunday mornings in the fall and spring and serves both as an introduction to our church as well as a guide towards membership.

SPRING CLASS | begins January 15

pcpc.org/membership

PARISH MINISTRY

A parish makes the big church smaller as we seek to live as Christ's people in the places where He has called us.

connect@pcpc.org | pcpc.org/parish

THIRD THIRD & SENIOR ADULTS

The focus of this ministry is on the more mature and experienced in life and faith who have a need for learning, fellowship, and sharing with others in ministry.

THIRD THIRD LUNCHEONS | January 22 & April 2

GRANDPARENTING LUNCHEONS | February 12 & May 21

VALENTINE LUNCH | February 14

DALLAS ARBORETUM | March 30

FIELD TRIP | April 20

pcpc.org/calendar

VESPERS

Every Wednesday, we gather in the Chapel for a brief evening prayer service that features a contemplative liturgy of prayers, Scripture readings, hymns, and Communion. The service is led by our pastors and is open to all.

WOMEN

We offer many places for women to connect, abide, and extend Christ through studying the Word of God, praying boldly, serving the poor, and sharing the Gospel. We want YOU to be part of growing in God's family with us this year!

BIBLE STUDIES | begin January 17-19

LENTEN PRAYER | February 22

SPRING RETREAT | February 24-26

THE BRIDGE: WHAT'S HER STORY? | March 28

A NIGHT OF HOPE (KATHERINE & JAY WOLF) | April 27

pcpc.org/women

YOUNG ADULTS

This ministry serves three different life stages—singles, couples, and families—who are primarily, but not absolutely, in their 20s to late 30s.

THE BIG GAME | February 12

ALPHA COURSE | April 21-May 31

ya@pcpc.org | [@pcpcya](https://www.instagram.com/pcpcya)

YOUTH

We believe that relationships are crucial for discipleship, so we offer multiple ways for students to build relationships with one another and with our team of staff and volunteers. Our middle school and high school communities meet on Sunday mornings and in smaller groups throughout the week.

H.S. SPRING BREAK ITALY MISSION TRIP | March 10-18

H.S. FLORIDA TRIP | May 27-June 2

M.S. MISSION DALLAS | June 26-29

pcpc.org/youth



abide IN CHRIST

BIBLE STUDIES

We have weekly Bible study opportunities for men, women, couples, youth, young adults, and senior adults. (see weekly schedule for day and time)

Spring Semester – begins January 17-19

pcpc.org/studies

COUNSEL & CARE

We believe that the Church is God's instrument to CARE for people as they really are, in all the unique ways God has created each person as an individual, and in all the difficult ways that brokenness, doubt, and frustration has come to bear on his or her story.

DEEPLIGHT PODCAST – Search "DeepLight Podcast" on your favorite platform

DIVORCECARE | Spring & Fall

MEN'S CARE GROUPS | Spring & Fall

WOMEN'S CARE GROUPS | Spring & Fall

pcpc.org/care

ESSENTIAL PATHS FOR ABIDING IN CHRIST

Essential Paths are courses that help us experience the transforming presence of Christ. We want all of our members to abide in Christ actively in these 6 areas: Bible, Prayer, Doctrine, Evangelism, Renewal, and Generosity.

DOCTRINE | begins January 15

pcpc.org/essential-paths

PRAYER

Prayer is a key component to abiding in Christ. We have All-Church Prayer, Abide: A Prayer Guide, Silent Retreats, and other opportunities to grow in prayer.

ALL-CHURCH PRAYER | January 15 & April 16

WINTERGRACE: THE GRACE OF PRAYER | February 4-5

WOMEN'S LENTEN PRAYER | February 22

pcpc.org/events

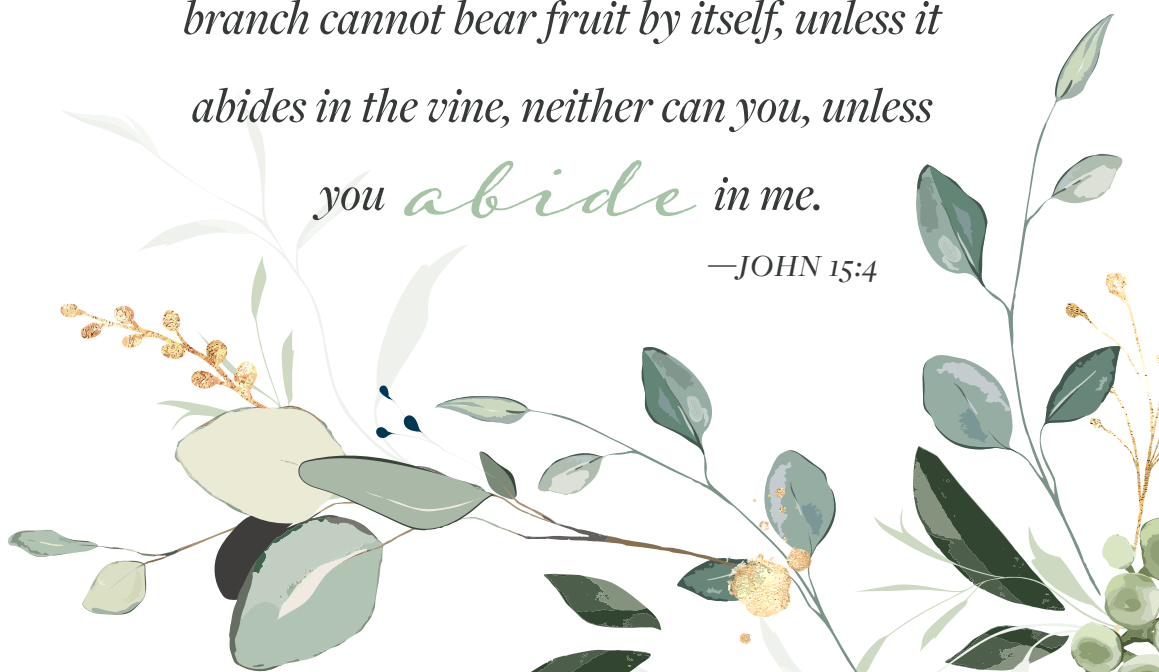
SMALL GROUPS

Our small groups meet throughout the week all over the city for abiding in Christ in the context of deepening relationships. We would love to help you find a small group.

pcpc.org/small-group

*Abide in me, and I in you. As the
branch cannot bear fruit by itself, unless it
abides in the vine, neither can you, unless
you **abide** in me.*

—JOHN 15:4





extend CHRIST

YOUR CHURCH

PCPC has many volunteer opportunities including PCPC Kids and our Frontline Ministry. Begin today!

pcpc.org/volunteer or **PCPC app**

YOUR CITY

CITY MISSIONS

We encourage and equip PCPC members to extend Christ through Gospel-centered relationships and cross-cultural ministry, especially with the least, the lost, and the lonely. We seek to raise awareness for issues faced within an inner-city context, serve alongside our ministry partners, and be the hands and feet of Christ to our neighbors in Dallas.

CITY MISSIONS EXPO | January 8

FAITH & CULTURE: LIGON DUNCAN & MARK MCDOWELL | February 19

HELPING HANDS | March 25

PROJECT WORKDAY | April 1

CHURCH IN THE CITY | April 23

pcpc.org/city-missions

GLOBAL-LOCAL MISSIONS

PCPC longs to be a community that is disciplined to be welcoming, teachable, and transformed through cross-cultural immersion with the nations that God sends to our doorstep. Our members are engaged in refugee, immigrant, and international student ministry in Dallas through relationships with ministry partners Reformed University Fellowship International (RUF-I), For the Nations Refugee Outreach, Cristo Rey, and our own English as a Second Language (ESL) program.

RUF-I Events | January 20, March 3, April 9, & May 14

ESL | Spring & Fall Classes

pcpc.org/global-local

PERFORMING ARTS

The PCPC concert series exists to proclaim the excellencies of Jesus Christ through music and other artistic media. These public events are presented each year by our church choirs as well as many guest artists. All concerts are free of charge and open to the public.

ADKINS & NIELSON | January 29

EVENSONG WITH FERNANDO ORTEGA | February 4

LENTEN ORGAN SERIES | Wednesdays in March

MESSIAH | March 5

NATHAN DAVY | June 11

pcpcconcerts.org

YOUR WORLD

WORLD MISSIONS & CHURCH PLANTING

"What goes deepest to the hearts goes widest to the world." At PCPC we envision a church where every member is a world Christian who understands the "global-ness" of the Church's mission, laments over those who have no hope of hearing the Gospel, and is eager to serve the purposes of God globally.

MISSIONS LUNCHEONS | February 9 & April 16

MISSIONARY MAILINGS | March 26

ITALY HIGH SCHOOL MISSION TRIP | March 10-18

McALLEN FAMILY MISSION TRIP | March 15-18

WEST AFRICA HIGH SCHOOL MISSION TRIP | June 24-July 2

MIDDLE SCHOOL MISSION DALLAS | June 26-29

WEST AFRICA FAMILY MISSION TRIP | July 2-11

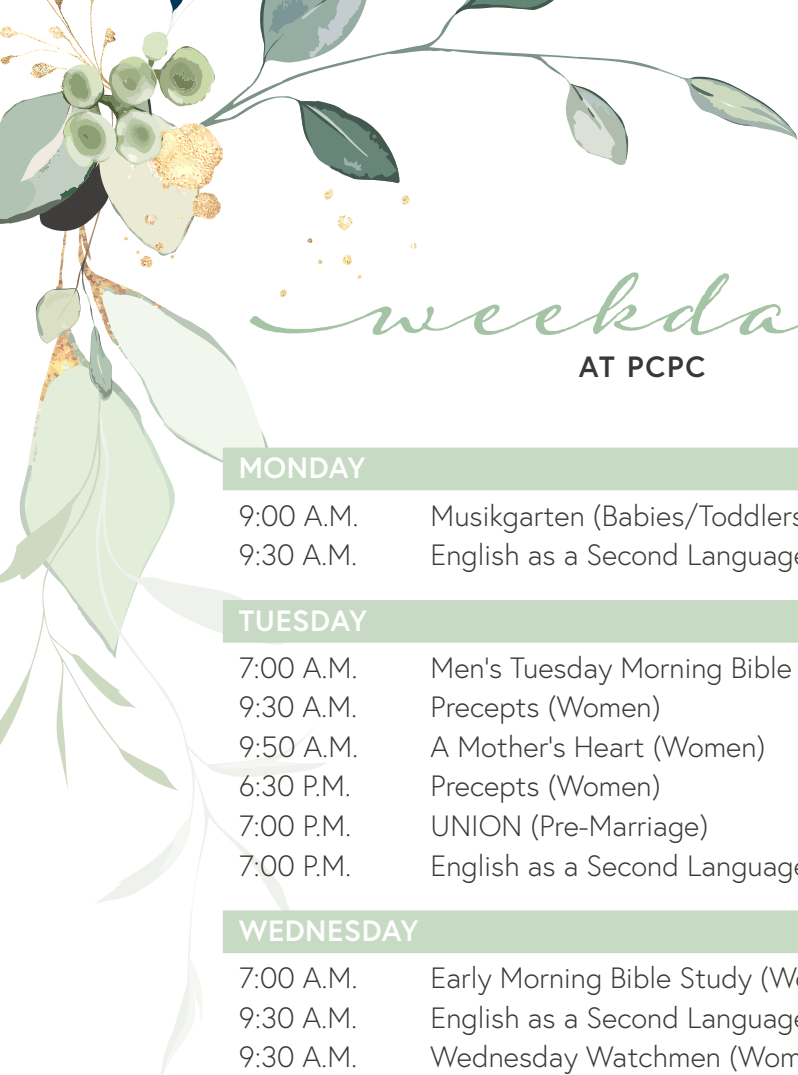
BAHAMAS FAMILY MISSION TRIP | July 8-15

pcpc.org/world

*Go therefore and make
disciples of *all* nations*

—MATTHEW 28:19





weekdays

AT PCPC

MONDAY

- | | |
|-----------|------------------------------------|
| 9:00 A.M. | Musikgarten (Babies/Toddlers) |
| 9:30 A.M. | English as a Second Language (ESL) |

TUESDAY

- | | |
|-----------|---|
| 7:00 A.M. | Men's Tuesday Morning Bible Study (Men) |
| 9:30 A.M. | Precepts (Women) |
| 9:50 A.M. | A Mother's Heart (Women) |
| 6:30 P.M. | Precepts (Women) |
| 7:00 P.M. | UNION (Pre-Marriage) |
| 7:00 P.M. | English as a Second Language (ESL) |

WEDNESDAY

- | | |
|-----------|---|
| 7:00 A.M. | Early Morning Bible Study (Women) |
| 9:30 A.M. | English as a Second Language (ESL) |
| 9:30 A.M. | Wednesday Watchmen (Women) |
| 4:30 P.M. | Carol Choir (Kinder - Grade 1) |
| 4:30 P.M. | Chapel Choir (Grades 2-4) |
| 5:00 P.M. | Covenant Choir (Grades 5-8) |
| 5:00 P.M. | Midweek Dinner |
| 5:30 P.M. | Midweek Vespers Service |
| 6:45 P.M. | DivorceCare (Care/Counseling) |
| 6:45 P.M. | Focus (Men, Women, & Couples Bible Study) |
| 7:00 P.M. | re engage (Marriage Enrichment) |
| 7:00 P.M. | Chancel Choir (Adult) |
| 7:00 P.M. | Young Women's Bible Study |

THURSDAY

- | | |
|------------|--------------------------------------|
| 8:45 A.M. | Weights & Worship (Women) |
| 10:00 A.M. | Thursday Morning Bible Study (Women) |
| 7:00 P.M. | English as a Second Language (ESL) |
| 7:00 P.M. | Men's Care Groups (Care/Counseling) |

Scan the QR code or
visit pcpc.org/calendar
for more information.



DEEPLIGHT PODCAST

Season 3 of Deep Light will launch this spring. Come listen to real stories of hope found in Jesus Christ. We will look at several topics including how people change, grief, trauma, and teenage years. Past episodes and seasons are available wherever you get your podcasts or at pcpc.org/deelight.



Search "Deep Light Podcast" on your favorite platform.

PARISH MINISTRY

Did you know we have a Parish Ministry at PCPC? A parish represents the members of our church in a particular neighborhood. As the church scattered around the city throughout the week, we want to come together with our neighbors to connect, abide, and extend. A parish makes the big church smaller as we seek to live as Christ's people in the places where He has called us. We've already seen the Lord at work in beautiful ways, and we're looking forward to what He will continue to do in and through us in our parishes! Find out more at pcpc.org/parish or email connect@pcpc.org.

MY PCPC PROFILE AND NEWSLETTERS

Have you moved lately or had a change of email? Please take a few minutes to update your PCPC profile. my.pcpc.org/portal

Would you like to receive e-mail newsletters from PCPC's e-This Week, Every Thought Captive Devotional, Kids, Youth, Women, or Missions? Add or update your PCPC newsletter subscriptions. pcpc.org/newsletters

PCPC MOBILE APP

With the PCPC app, you can check your kids in on Sunday, see upcoming events and volunteer opportunities, watch and listen to sermons and other resources including prayer, online giving, and ways to connect more with the PCPC church family.



Apple

Download the PCPC App today for your iOS or Android device.



Android



SPECIAL EVENTS AT PCPC

CITY MISSIONS EXPO | January 8

WINTERGRACE | February 4-5

FAITH & CULTURE | February 19

WOMEN'S RETREAT | February 24-26

HOLY WEEK & EASTER SUNDAY | April 2-9



CITY MISSIONS EXPO

Join us on Sunday, January 8, for this come-and-go event to learn what God has done, is doing, and will do through our City Ministry Partners. Learn how you can be a part of extending Jesus' Kingdom in Dallas. Appetizers will be provided. We hope to see you there.

WINTERGRACE

WinterGrace is an on-campus retreat for our whole congregation to experience renewal in God's grace together. Our theme this year is The Grace of Prayer, and we are delighted to welcome Chad Scruggs, Douglas McKelvey, and Fernando Ortega as our featured guests. We hope you will set aside these two days, February 4 & 5, on your calendar as we anticipate the joyful fellowship, rich teaching, and beautiful worship God has provided.

FAITH & CULTURE

How do we maintain unity in the church and reflect Christ to the world as political polarization continues to increase around us? In a world where people are full of contempt for those with whom they disagree, we will consider how we can live as disciples of Christ with wisdom, humility, and love. Please join us to hear from Ligon Duncan on this important topic Sunday, February 19 at 5:00 p.m.

WOMEN'S RETREAT

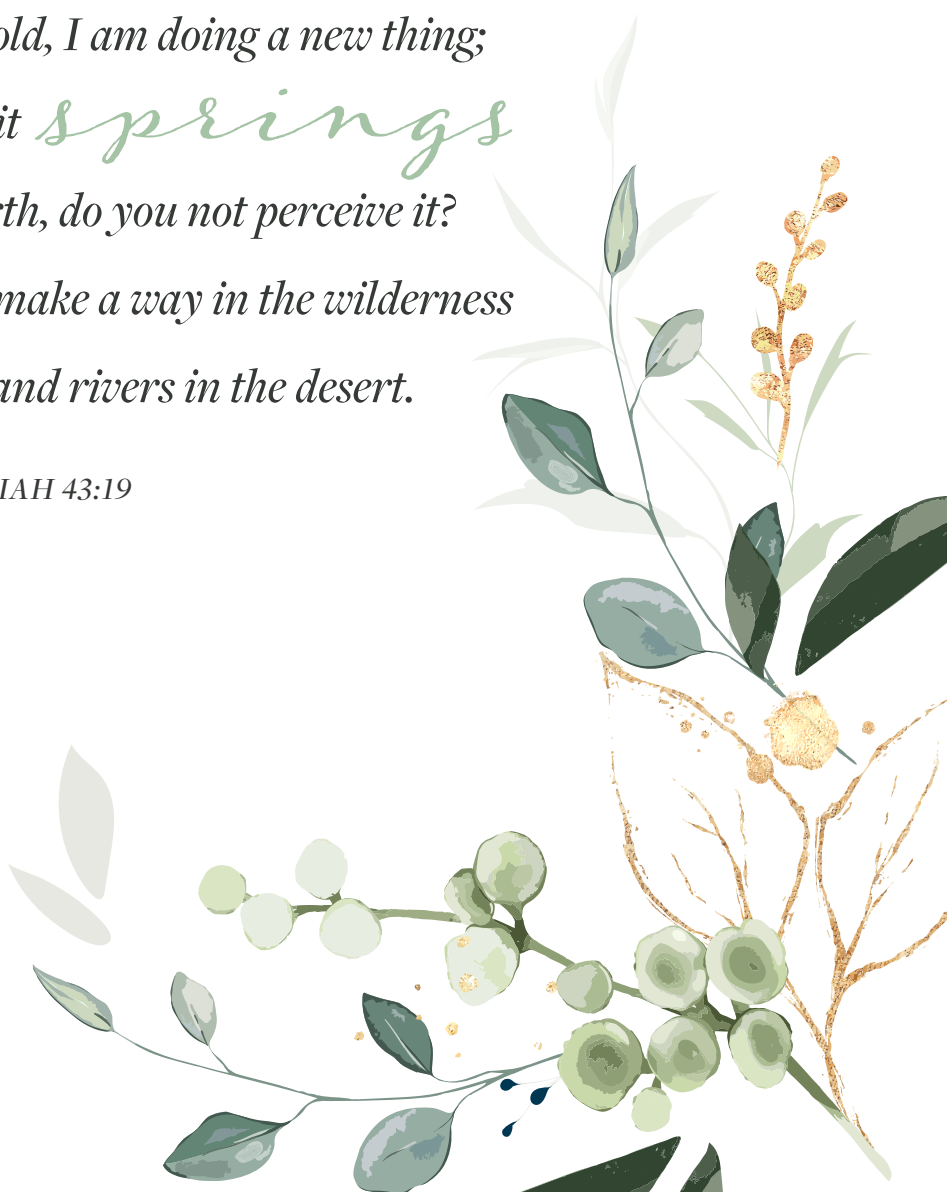
Join us for a relaxing getaway, February 24-26, with women from our church family. Enjoy worship, teaching, meals, and time with the Lord at the beautiful Allaso Ranch in Hawkins, Texas.

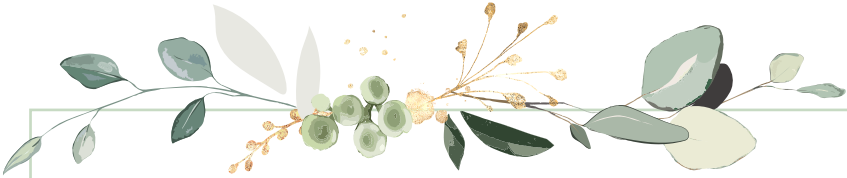
HOLY WEEK

For many, Holy Week (April 2-9) is the most beloved week of the year at our church. It is beloved not merely for the beautiful music, added fellowship, or triumphant celebration, but for the way it helps fix our eyes on Jesus Christ.

*Behold, I am doing a new thing;
now it **springs**
forth, do you not perceive it?
I will make a way in the wilderness
and rivers in the desert.*

—ISAIAH 43:19





contacts

MAIN OFFICE.....	214-224-2500
CHILDREN'S MINISTRY.....	214-224-2556
YOUTH MINISTRY.....	214-224-2762
LIBRARY.....	214-224-2673
BOOKSTORE.....	214-224-2740
MUSIC & ARTS.....	214-224-2638
PRAYER.....	214-224-2680



4124 Oak Lawn Avenue, Dallas, TX 75219-3152 | pcpc.org
follow @parkcitiespca on facebook, instagram, & twitter