



2021

FALL GUIDE

Park Cities Presbyterian Church exists to extend the transforming presence of the Kingdom of our Lord Jesus Christ in Dallas and to the world.

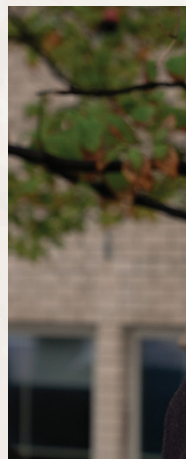


Welcome

TO PARK CITIES PRESBYTERIAN CHURCH

I want to welcome you to PCPC. We are a church family that delights in celebrating the love that Jesus has for us. We believe the Lord is calling us to extend the good news of Jesus as we open new doors, plant new churches, and seek a new city. So, it is an exciting time to be at PCPC, and we are glad that you're here. I pray that the Lord will draw you closer to Himself as you get to know our church.

We hope this Fall Guide will be helpful to you as you explore ways to connect to Christ and one another, abide in Christ, and extend Christ in the coming months. We believe that healthy, fruitful Christians will be active in all three of these areas through their local church. So, as you browse the following pages, please consider how you and your family can join us this fall.





Mark Davis
SENIOR PASTOR

*To all who are
spiritually weary
and seek rest;
to all who mourn
and long for
comfort;
to all who
struggle and
desire victory;
to all who sin and
need a Savior;
to all who are
strangers and
want fellowship;
to all who hunger
and thirst after
righteousness;
and to all who
will come, this
church opens
wide her doors
and offers
welcome in the
name of the Lord
Jesus Christ.*

A smiling woman with blonde hair, wearing a red lace top and a light blue skirt, is walking towards the right. She is carrying a yellow and black patterned clutch bag. In the background, a man in a light blue shirt and a young girl in a pink dress are sitting on a light blue sofa. The wall behind them has the words "MIDDLE CHOICE" in large, white, sans-serif capital letters.

Connect to Christ

AND ONE ANOTHER

In John 15, Jesus gives us a beautiful vision of a healthy group of believers. Drawing from the rich biblical imagery of God's people being like a vineyard, Jesus reveals Himself as "the true vine," the one in whom true life is found (v. 1). He warns that apart from Him we are fruitless, helpless, and condemned (vv. 5-7). But He also promises that all who connect to Him by faith will be united to Him, bear fruit through Him, and experience fullness of joy (vv. 3-4, 11). If we are connected to Jesus, the true vine, we are also immediately and intimately connected with every other believer as fellow branches (v. 5). For us as a church, this means the first and most foundational thing we do is to be God's means to connect people to Christ and His Church personally.

SUNDAYS AT PCPC

Three corporate worship services are held Sunday mornings along with Sunday Morning Communities for all ages at 8:00 a.m., 9:30 a.m. & 11:00 a.m.



Ministries

CHILDREN

We want to provide a safe, loving environment as we connect our youngest disciples to the love of God through Jesus Christ. Our hope is to partner with parents as they prepare their children for a lifetime of abiding in Christ and extending Him to others. We have a nursery for newborns to 2-year olds, and classes for preschoolers (3 year olds - kindergarten) and elementary-age kids (1st through 4th grade).

First Friday – ongoing

Pregame Saturday – September 11

Kids Promotion Sunday – September 12

2nd Grade Bibles – October 3

Pumpkin Gospel – October 15

Family Advent Service – December 5

Kim Heflin | 214-224-2556

kim.heflin@pcpc.org

pcpc.org/kids

CHOIRS

Our choirs are filled with people who love God, love to sing, and love to help others sing. We welcome new members, kindergarten through adult.

Chancel Adult Choir – Ongoing

Children's & Youth Choirs

– begin September 15

Stephen Bond | 214-224-2638

stephen.bond@pcpc.org

pcpc.org/music/choir

MEN

PCPC offers opportunities for men to abide in God's Word, share life, and extend Christ to others.

Men's Integrity

Groups – *fall + spring*

Tuesday Morning Men's Bible

Study – *begins September 14*

Elaine Montague | 214-224-2736
elaine.montague@pcpc.org
pcpc.org/men

MARRIAGE

We long to see vibrant relationships that reflect God's love for us in the Gospel. Our marriage ministry serves pre-married, newly married, and established married couples through classes such as UNION, our pre-marriage course, and re|engage, a course for all married couples. We also have Foundation Groups which are small groups for newlyweds that study and discuss biblical marriage.

re|engage

– *begins September 13*

Dad Talk

– *begins September 15*

Union – *begins September 15*

Melissa Hecht | 214-224-2679
melissa.hecht@pcpc.org
pcpc.org/marriage

NEW MEMBER CLASS

This class meets on Sunday mornings in the fall and spring and serves both as an introduction to our church as well as a guide towards membership.

Fall Class

– *begins September 12*

Spring Class

– *begins January 16*

Debbie Blanton | 214-224-2744
debbie.blanton@pcpc.org
pcpc.org/membership

PARISH MINISTRY

A parish makes the big church smaller as we seek to live as Christ's people in the places where He has called us.

connect@pcpc.org
pcpc.org/parish

SENIOR ADULTS

The focus of this ministry is on the more mature and experienced in life and faith who have a need for learning, fellowship, and sharing with others in ministry.

GrandParenting Seminar

– *October 21-22*

Jane Beasley | 214-224-2771
jane.beasley@pcpc.org
pcpc.org/senior-adult-community

SUNDAY MORNING COMMUNITIES

Sunday Morning Communities (SMC) cultivate a space for adults to connect more deeply to Christ through the teaching of God's Word in fellowship with one another. Each SMC varies in size and reflects the unique character of what its members share in common, even as it extends an invitation to all—young and old, single and married, those with children and those without.

Elaine Montague | 214-224-2736

elaine.montague@pcpc.org

pcpc.org/communities

WOMEN

We offer many places for women to connect, abide, and extend Christ through studying the Word of God, praying boldly, serving the poor, and sharing the Gospel. We want YOU to be part of growing in God's family with us this year!

Bible Studies

– *begin September 14*

Kickoff Event – *September 23*

Silent Retreat – *October 13-17*

The Bridge – *October 19*

Spring Retreat – *February 25-27*

Leslie Newman | 214-224-2722

leslie.newman@pcpc.org

pcpc.org/women

YOUNG ADULTS

This ministry serves three different life stages—singles, couples, and families—who are primarily, but not absolutely, in their 20s to late 30s.

John Paul Schulze | 214-224-2584

johnpaul.schulze@pcpc.org

pcpc.org/young-adults

YOUTH

We believe that relationships are crucial for discipleship, so we offer multiple ways for students to build relationships with one another and with our team of staff and volunteers. Our youth meet on Sunday mornings and in smaller groups throughout the week.

Middle School – *Sunday Mornings, 5th – 8th graders meet at 11:00 a.m. in the Gym.*

High School – *Sunday Mornings, 9th – 12th graders meet at 11:00 a.m. in the Loft.*

Middle School Fall Retreat – *September 24-25*

Chris Rossi | 214-224-2762

chris.rossi@pcpc.org

pcpc.org/youth

Abide in Christ

The most repeated word in John 15 is, "abide." Five times in four verses, Jesus invites and instructs us: "abide in Me (vv. 4-7)." To abide in Jesus means that He is our true home and our primary identity. To abide in Jesus means we will bear much fruit in our lives (v. 5) as we relate to Him and grow in Him continuously through His Word and through prayer (v. 7). And for those who abide in Him, Jesus promises perfect provision (v. 7), love (v. 10), and joy (v. 11). For us as a church, this means the second and most comprehensive thing we do is to help people abide in Christ increasingly.



BIBLE STUDIES

We have weekly Bible study opportunities for men, women, couples, youth, young adults, and senior adults. (see weekly schedule for day and time)

Fall Semester

– begins September 14

Spring Semester

– begins January 18

pcpc.org/events

COUNSEL & CARE

We believe that the Church is God's instrument to CARE for people as they really are, in all the unique ways God has created each person as an individual, and in all the difficult ways that brokenness, doubt, and frustration has come to bear on his or her story.

Deep Light Podcast

– (search "Deep Light Podcast" on Spotify, Google, Apple, and others)

DivorceCare

– fall and spring semesters

Men's Integrity Groups

– fall and spring semesters

pcpc.org/care

ESSENTIAL PATHS

Essential Paths are classes that help us experience the transforming presence of Christ. We want all of our members to abide in Christ actively in these 6 areas: The Words of Life (Understanding the Bible), The Spiritual Life (Prayer), Truths for Life (Creeds and Confessions), Sharing the Way of Life (Evangelism), New Life Together (Redemption), and The Sacrificial Life (Stewards of Grace).

The Words of Life

– begins September 15

pcpc.org/events

PRAYER

Prayer is a key component to abiding in Christ. We have All-Church Prayer, Daily Prayer Guide, Silent Retreats, and other opportunities to grow in prayer.

All-Church Prayer

– September 12, November 7, January 16

Silent Retreats – October 13-17, November 10-14

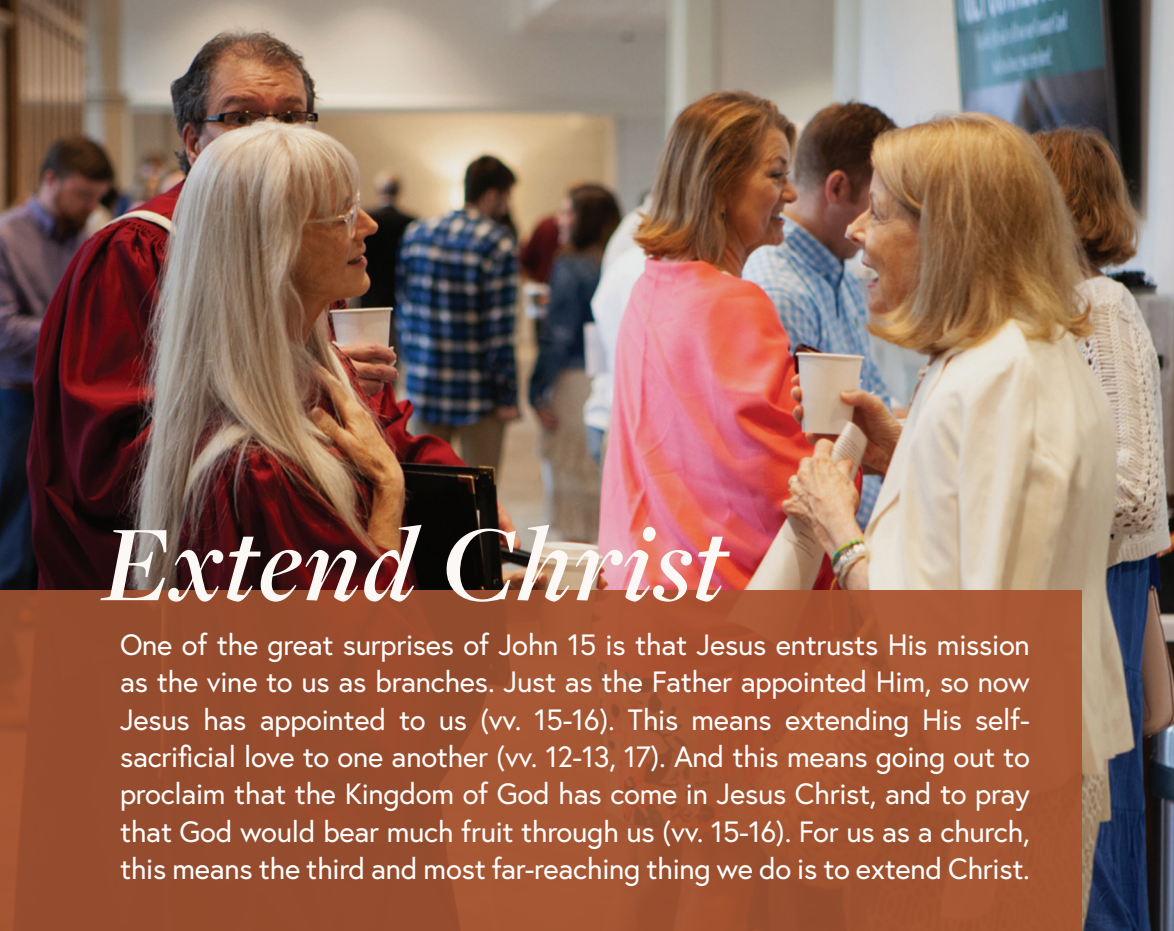
pcpc.org/prayer

SMALL GROUPS

Our small groups meet throughout the week all over the city for abiding in Christ in the context of deepening relationships. We would love to help you find a small group.

smallgroups@pcpc.org

pcpc.org/small-groups



Extend Christ

One of the great surprises of John 15 is that Jesus entrusts His mission as the vine to us as branches. Just as the Father appointed Him, so now Jesus has appointed to us (vv. 15-16). This means extending His self-sacrificial love to one another (vv. 12-13, 17). And this means going out to proclaim that the Kingdom of God has come in Jesus Christ, and to pray that God would bear much fruit through us (vv. 15-16). For us as a church, this means the third and most far-reaching thing we do is to extend Christ.

Your Church

PCPC has many volunteer opportunities including PCPC Kids and Frontline Ministry. Begin today!

pcpc.org/volunteer

Your City

CITY MISSIONS

We encourage and equip PCPC members to extend Christ through Gospel-centered relationships and cross-cultural ministry, especially with the least, the lost, and the lonely. We seek to raise awareness for issues faced within an inner-city context, serve alongside our ministry partners, and be the hands and feet of Christ to our neighbors in Dallas.

Snacks of Blessing – September 25

Practicing the King's Economy – November 16

Canned Food Drive – November 7-28

Boxes Assembly – November 20

Boxes of Blessing Event – December 4

Jenna Tenpenny | 214-224-2501

jenna.tenpenny@pcpc.org

pcpc.org/city-missions

GLOBAL-LOCAL MISSIONS —

PCPC longs to be a community that is disciplined to be welcoming, teachable, and transformed through cross-cultural immersion with the nations that God sends to our doorstep. Our members are engaged in refugee, immigrant, and international student ministry in Dallas through relationships with ministry partners.

RUF-I Events – August 20,
September 24, November 19

ESL – fall and spring classes

Sarah Morrison | 214-224-2524

sarah.morrison@pcpc.org

pcpc.org/global-local

PERFORMING ARTS —

The PCPC concert series exists to proclaim the excellencies of Jesus Christ through music and other artistic media. These public events are presented each year by our church choirs as well as many guest artists. All concerts are free of charge and open to the public.

Nathan Davy – September 26

Chamber Concert
– November 14

Christmas Concert
– December 12

Adkins & Nielson – January 23

pcpcconcerts.org

PCPC@WORK —

We seek to equip the church to think biblically about vocation and calling, desiring to connect the body to reflect corporately about how

the Gospel impacts its spheres of influence. We mobilize our members to act strategically as God's ambassadors in their public lives.

Blake Schwarz | 214-224-2803

blake.schwarz@pcpc.org

pcpc.org/at-work

Your World

WORLD MISSIONS & CHURCH PLANTING —

"What goes deepest to the hearts goes widest to the world." At PCPC we envision a church where every member is a world Christian who understands the "global-ness" of the Church's mission, laments over those who have no hope of hearing the Gospel, and is eager to serve the purposes of God globally.

Missionary Commissioning

– September 26

Missionary Mailings

– October 24

Missions Luncheon – November

14, February 13, March 27

Courtney Squibb | 214-224-2523

courtney.squibb@pcpc.org

pcpc.org/world

PCPC FOUNDATION —

The foundation receives gifts, grants, bequests, and other contributions to strategically fund Gospel-based initiatives, which leverage PCPC's ability to expand Gospel ministries beyond what PCPC's operating budget can or should do.

pcpcfoundation.org

Weekdays at PCPC

MONDAY

9:00 A.M.	Musikgarten Classes (Babies/Toddlers)
9:30 A.M.	English as a Second Language (ESL)
7:00 P.M.	re engage (Marriage Enrichment)

TUESDAY

7:00 A.M.	Men's Tuesday Morning Bible Study (Men)
9:30 A.M.	Precepts (Women)
9:50 A.M.	A Mother's Heart (Women)
6:30 P.M.	Precepts (Women)
7:00 P.M.	English as a Second Language (ESL)

WEDNESDAY

7:00 A.M.	Early Morning Bible Study (Women)
9:30 A.M.	English as a Second Language (ESL)
9:30 A.M.	Watchmen (Women)
12:00 P.M.	Dad Talk (Family/Marriage)
4:30 P.M.	Carol Choir (Kinder - Grade 1)
4:30 P.M.	Chapel Choir (Grades 2-4)
5:00 P.M.	Covenant Choir (Grades 5-8)
5:30 P.M.	Midweek Dinner
6:45 P.M.	Union (Pre-Marriage)
6:00 P.M.	The Call – Pete Deison (Men)
6:45 P.M.	DivorceCare (Care/Counseling)
6:45 P.M.	Essential Path: The Words of Life
6:45 P.M.	Focus (Co-Ed Bible Study)
7:00 P.M.	Young Women's Bible Study
7:00 P.M.	Chancel Choir (Adult)

THURSDAY

7:00 A.M.	Men's Integrity Group (Care/Counseling)
10:00 A.M.	Morning Bible Study (Women)
7:00 P.M.	English as a Second Language (ESL)
7:00 P.M.	Men's Integrity Group (Care/Counseling)

For more, visit pcpc.org/calendar





A photograph of a church interior. In the background, a large wooden organ is visible. People are seated in wooden pews. In the foreground, a man, two young boys, and a woman are seated in a pew, looking down at papers or books. The church has a high ceiling with wooden beams and several large, glowing pendant lights. A stained glass window is visible on the left side of the image.

Special Events

AT PCPC

Fall Kickoff – *September 12*

Christmas Eve Services – *December 24*

WinterGrace – *January 30-31*

Holy Week – *April 10-17*

Easter Sunday – *April 17*

THE WORDS OF LIFE: READING THE BIBLE WITH CHRIST AT THE CENTER

Whether you have been walking as a Christian for days or decades, we all need growth and renewal. The first step along this path is knowing and loving God's Word together. Join us as we explore the riches of the Bible from Genesis to Revelation and see how all Scripture points us to Jesus Christ. This is the first course in our new Essential Paths series of discipleship courses. Space is limited, and registration is required. This class will be taught at 6:45 p.m. on Wednesdays (September 15 – November 10) and 11:00 a.m. on Sundays (September 19 – November 14). pcpc.org/events/

PARISH MINISTRY

Did you know we have a Parish Ministry at PCPC? A parish represents the members of our church in a particular neighborhood. As the church scattered around the city throughout the week, we want to come together with our neighbors to connect, abide, and extend. A parish makes the big church smaller as we seek to live as Christ's people in the places where He has called us. In the parishes that have launched, elders have gathered a parish team of deacons and laypeople, men and women, who feel called to connect and keep up with their PCPC neighbors in the area. The structure means that every member in a parish has a connection to a parish team member and an elder. We've already seen the Lord at work in beautiful ways, and we're looking forward to what He will continue to do in and through us in our parishes! Find out more at pcpc.org/parish/ or email connect@pcpc.org.

MY PCPC PROFILE AND NEWSLETTERS

Have you moved lately or had a change of email? Please take a few minutes to update your PCPC profile at my.pcpc.org/portal/.

Would you like to receive e-mail newsletters from PCPC's e-This Week, Kids, Youth, Women, or Missions? Add or update your PCPC newsletter subscriptions at pcpc.org/newsletters/.



*4124 Oak Lawn Avenue, Dallas, TX 75219-3152 | pcpc.org
follow @parkcitiespca on facebook, instagram, & twitter*