

Features

- Full length seamless lenses range from 4 to 8 feet.
- Not limited to straight runs, available in L nodes, providing freedom to create seamless configurations, available in 22.5in increments.
- Integrated drivers and controls make this fixture easy to install and widely applicable
- Features a symmetrical, high-performance WET RATED frosted lens which illuminates the surface evenly with no shadows or dark spots.
- Five Year Warranty

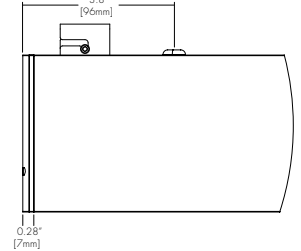
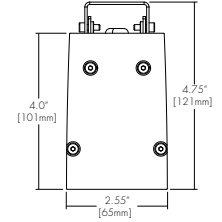
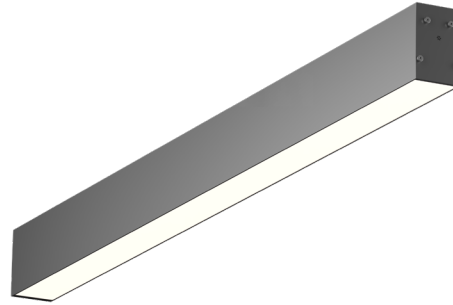
Finish Options

White Black Silver

ROHS



MADE IN CANADA



Technical Information

OUTPUT OPTIONS (Frosted Lens)	04	06	08	10
Lumen Output	400 lm/ft	566 lm/ft	843 lm/ft	1034 lm/ft
Average Power Consumption	3.8 W/ft	5.7 W/ft	9.4 W/ft	12.0 W/ft
Efficacy	104 lm/W	100 lm/W	90 lm/W	87 lm/W

CCT	Multiplier	CRI	TM-30		
			R _f	R _g	R ₉
2700K	0.92	93+	92	100	50+
3000K	0.97	93+	92	103	50+
3500K	1.00	93+	93	102	50+
4000K	1.07	93+	92	101	50+

OUTPUT OPTIONS (Asymmetric Lens)	04	06	08
Lumen Output	433 lm/ft	648 lm/ft	800 lm/ft
Average Power Consumption	8.1 W/ft	13.8 W/ft	17.3 W/ft
Efficacy	54 lm/W	47 lm/W	46 lm/W

Ordering Code

Integral Driver Example: Fixture VSD-SM-4FT-04-27K-F-CH-WH-0103-NA

Fixture

MODEL	LENGTH	OUTPUT	CCT	LENS	MOUNTING	BODY FINISH
VSW-SM - Vesta Wet, Surface Mount	4ft - 4 feet 6ft - 6 feet 8ft - 8 feet XX - System ²	04 - 400 lm/ft (3.8 W/ft) 06 - 566 lm/ft (5.7 W/ft) 08 - 843 lm/ft (9.4 W/ft) 10 - 1034 lm/ft (12 W/ft) ¹	27K - 2700K 30K - 3000K 35K - 3500K 40K - 4000K	F - Frosted Lens AS - Asymmetric Lens	SM - Surface Mount	Standard WH - White BK - Black SL - Silver

DRIVER

DRIVER OPTIONS⁸

010S - 0-10V, 1% Dimming, 120V/277V
 0103 - 0-10V, 1% Dimming, 347V Only⁵
 010L - EldoLED, 0-10V, Linear, 0.1% Dimming, 120V/277V²
 010G - EldoLED, 0-10V, Log, 0.1% Dimming, 120V/277V²
 DALI - EldoLED, DALI protocol 2, DT-6, Log, 0.1% Dimming, 120V/277V²
 LUTE - Lutron Hilume Ecodigital, 1% Dimming, 120V/277V^{2,3,5}
 DMX - EldoLED, DMX, 0.1% Dimming, 120V/277V^{2,5}

NA - None
 EMG - Emergency Driver⁴
 CSMB - Casambi
 MNOD - PIR Motion Sensor, Occupancy, Daylight Harvesting⁷

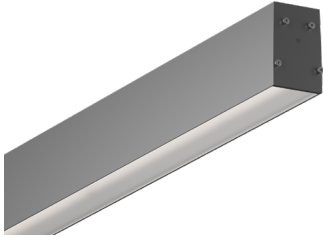
1 - Asymmetric Lens is not compatible with 10 output.
 2 - Asymmetric Lens not compatible with 010L/010G/DALI/LUTE/DMX
 3 - Output 08 not available for LUTE driver.
 4 - EMG Battery Back-Up not available on Length 4ft or 6ft, illuminates 4ft or 6ft section based on lumen output.

5 - EMG not available with 0103/LUTE/DMX drivers.
 6 - CSMB with 010S/010L/010G/DALI drivers only.
 7 - MNOD contact manufacturer for build assistance - (MOD Only).
 8 - AWRNR contact manufacturer for build assistance - (MOD Only).
 9 - Customizable configurations available, contact factory (MOD only).

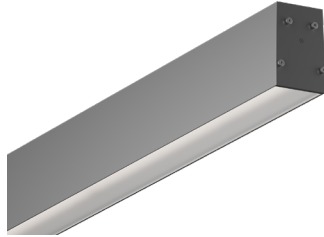
CONTACT FACTORY FOR MORE OPTIONS.

Lens

F
Frosted Lens

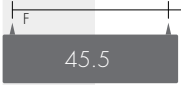

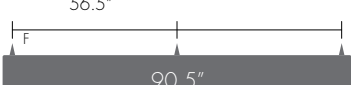


AS
Asymmetric Lens



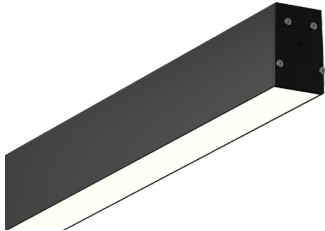
Cut Lengths

Vesta Wet Rated Surface Mount end cap will add 0.28" (7mm) per side to the total length.

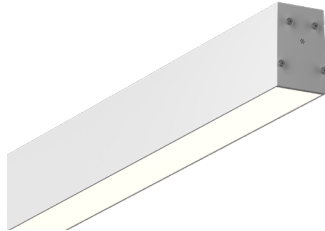
CODE	FIXTURE LENGTH LONGUEUR *1	Feet	4	6	8	10
A	44.5"					
B (6)	66.5"					
C (8)	88.5"					

Standard Finish

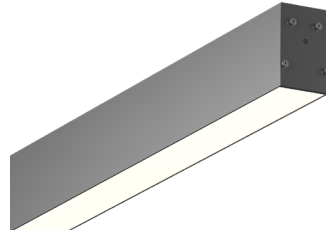
BK
Black



WH
White



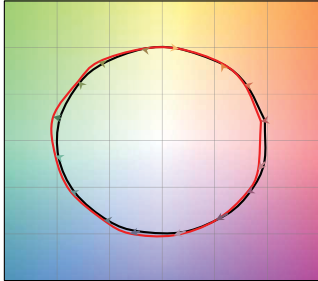
SL
Silver



TM-30

2700K

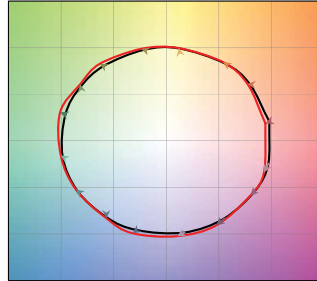
COLOR VECTOR GRAPHIC



— Reference Source — Test Source

3000K

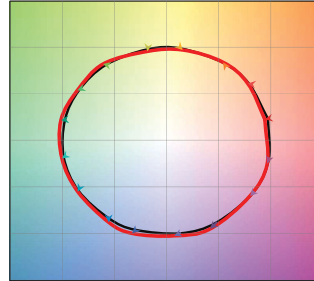
COLOR VECTOR GRAPHIC



— Reference Source — Test Source

3500K

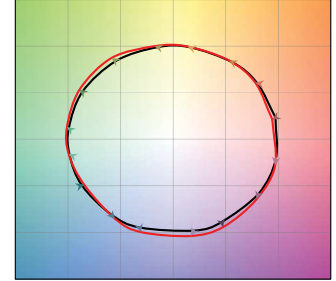
COLOR VECTOR GRAPHIC



— Reference Source — Test Source

4000K

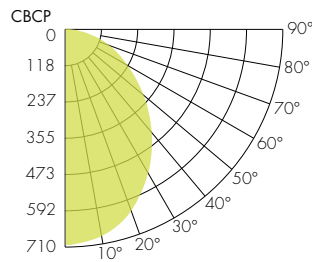
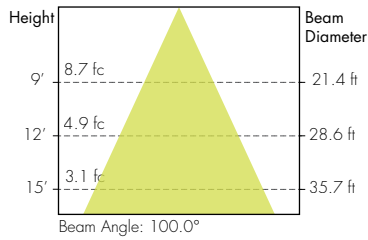
COLOR VECTOR GRAPHIC



— Reference Source — Test Source

Photometry

Frosted Lens



Asymmetric Lens

