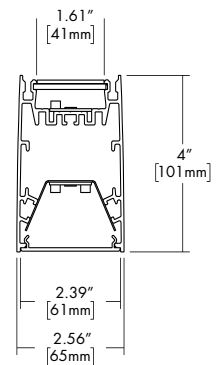
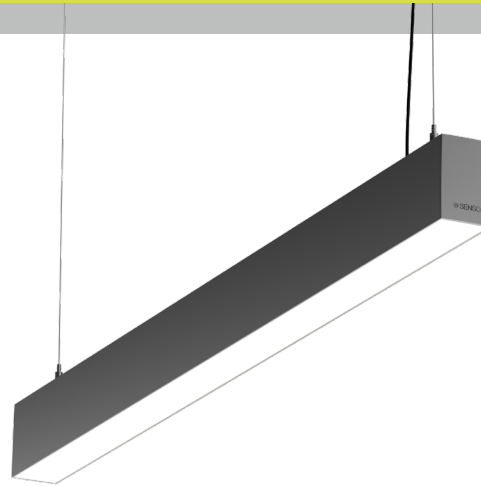


Features

- Full length seamless lenses range from 4 to 12 feet.
- This built to order architecturally designed luminaire features Up AND Down light output
- Not limited to straight runs, available in L nodes, providing freedom to create seamless configurations, available in 22.5in increments.
- Integrated drivers and controls make this fixture easy to install and widely applicable
- The subtle flared Vesta Suspended fixtures feature a symmetrical, high-performance frosted lens which illuminates the surface evenly with no shadows or dark spots.
- Five Year Warranty.



Finish Options



Technical Information

OUTPUT OPTIONS (Frosted Lens)		04	06	08	10	12
DOWN	Lumen Output	400 lm/ft	566 lm/ft	843 lm/ft	1034 lm/ft	1220 lm/ft
	Average Power Consumption	3.8 W/ft	5.7 W/ft	9.4 W/ft	12.0 W/ft	15.1 W/ft
	Efficacy	104 lm/W	100 lm/W	90 lm/W	87 lm/W	81 lm/W
UP	Lumen Output	454 lm/ft	628 lm/ft	788 lm/ft		
	Average Power Consumption	3.8 W/ft	5.6 W/ft	7.4 W/ft		
	Efficacy	117 lm/W	112 lm/W	106 lm/W		

OUTPUT OPTIONS (Asymmetric Lens)		04	06	08
DOWN	Lumen Output	433 lm/ft	648 lm/ft	800 lm/ft
	Average Power Consumption	8.1 W/ft	13.8 W/ft	17.3 W/ft
	Efficacy	54 lm/W	47 lm/W	46 lm/W
UP	Lumen Output	433 lm/ft	648 lm/ft	800 lm/ft
	Average Power Consumption	8.1 W/ft	13.8 W/ft	17.3 W/ft
	Efficacy	54 lm/W	47 lm/W	46 lm/W

CCT	Multiplier	CRI	TM-30		
			R _f	R _g	R ₉
2700K	0.92	93+	92	100	50+
3000K	0.97	93+	92	103	50+
3500K	1.00	93+	93	102	50+
4000K	1.07	93+	92	101	50+

Ordering Code

Integral Driver Example: Fixture VSD-S_UD-6FT-04-04-35K-F-F-WH-RDS-WH-AF5-WH-010S-CSMB

Fixture

MODEL	LENGTH	OUTPUT DOWN ¹	OUTPUT UP ¹	CCT	LENS DOWN ¹	LENS UP ¹	FINISH
VSD-S - Vesta Dry, Suspended Up AND Down	4ft - 4 feet 6ft - 6 feet 8ft - 8 feet 10ft - 10 feet 12ft - 12 feet XX - System ⁵	04 - 400 lm/ft (3.8 W/ft) 06 - 566 lm/ft (5.7 W/ft) 08 - 843 lm/ft (9.4 W/ft) 10 - 1034 lm/ft (12 W/ft) 12 - 1220 lm/ft (15 W/ft)	04 - 454 lm/ft (3.9 W/ft) 06 - 628 lm/ft (5.6 W/ft) 08 - 788 lm/ft (7.4 W/ft)	27K - 2700K 30K - 3000K 35K - 3500K 40K - 4000K	F - Frosted Lens BL - Black Lens	F - Frosted Lens BW - Batwing	Standard WH - White BK - Black SL - Silver

CANOPY/ HOUSING	CANOPY FINISH	SUSPENSION TYPE/HEIGHT	SUSPENSION FINISH	DRIVER	DRIVER OPTIONS
RDS - Round Slim USQS - Unified Square Slim URDS - Unified Round Slim	Standard WH - White BK - Black SL - Silver	AF5 AC + Feed Cable, 5ft long AF8 AC + Feed Cable, 8ft long AF10 AC + Feed Cable, 10ft long	Standard CL - Feed Cable Clear WH - Feed Cable White BK - Feed Cable Black	010S - 0-10V, 1% Dimming, 120/277V 0103 - 0-10V, 1% Dimming, 347V Only	NA - None EMG - Emergency Driver ^{3,4} CSMB - Casambi ²

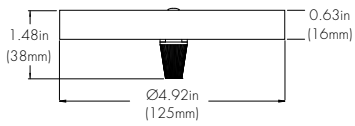
1 - Must select OUTPUT and LENS for both DOWN and UP.
2 - CSMB only available with 010S.

3 - EMG only available with 010S.
4 - EMG Battery Back-Up not available on Length 4ft or 6ft, illuminates 4ft or 6ft section based on lumen output.
5 - Customizable configurations available, contact factory (MOD only).

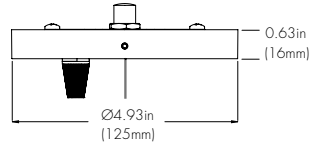
CONTACT FACTORY FOR MORE OPTIONS.

Canopy

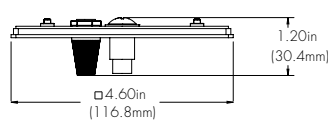
RDS
Round Slim Canopy



URDS
Unified Round Slim

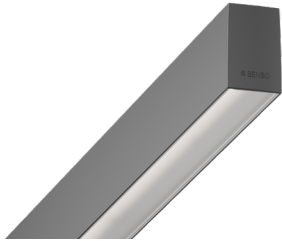


USQS
Unified Square Slim

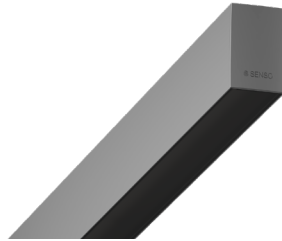


Lens Down

F
Frosted Lens

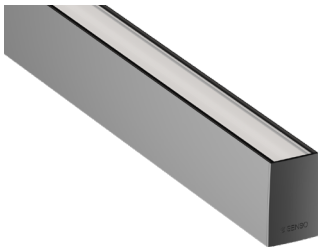


BL
Black Lens

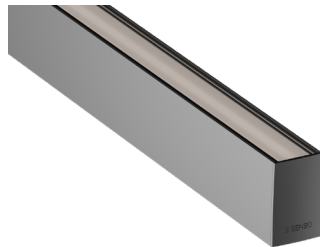


Lens Up

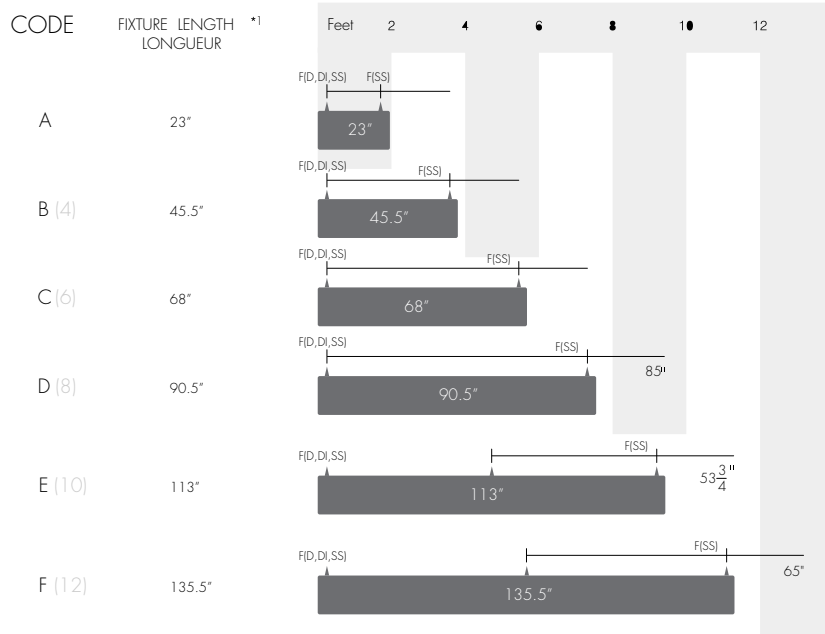
F
Frosted Lens



BW
Batwing Lens (Only Lens Up)

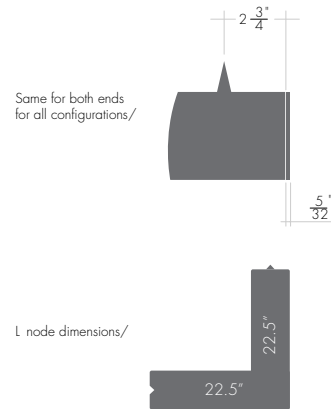


Cut Lengths



Legend

- A : Suspension Point
- F() : Feed Point
- D : Direct
- DI : Direct / Indirect
- SS : Separate Switching



*1 Not including end-caps. End-caps are an additional 5/32"

For custom lengths please call customer service. Cover plates will be added to each end to avoid dark spaces on lense.

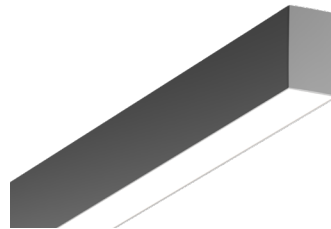
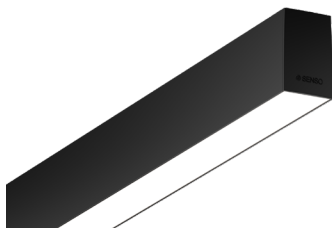
Sensor adds 3.75" to standard vesta length

Standard Finish

BK
Black

WH
White

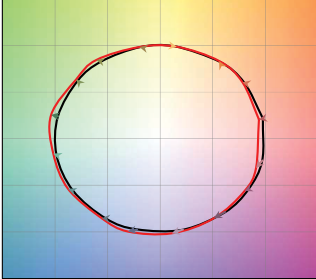
SL
Silver



TM-30

2700K

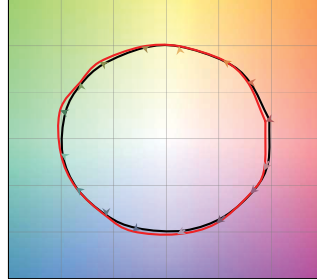
COLOR VECTOR GRAPHIC



— Reference Source — Test Source

3000K

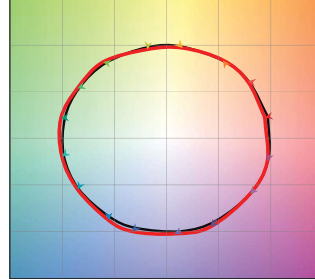
COLOR VECTOR GRAPHIC



— Reference Source — Test Source

3500K

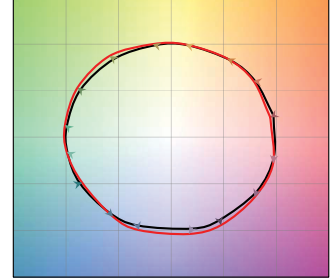
COLOR VECTOR GRAPHIC



— Reference Source — Test Source

4000K

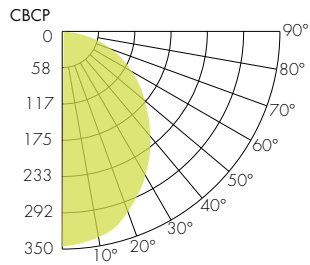
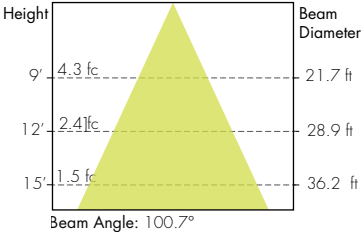
COLOR VECTOR GRAPHIC



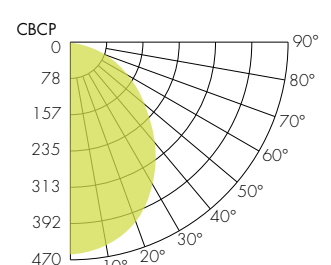
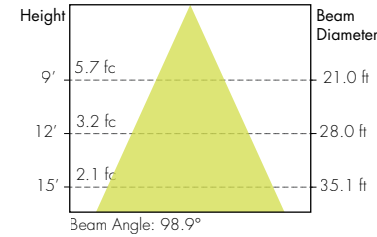
— Reference Source — Test Source

Photometry

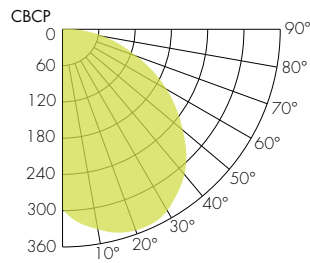
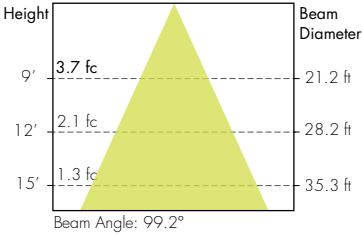
Static White Down Frosted Lens



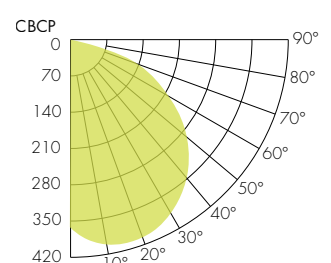
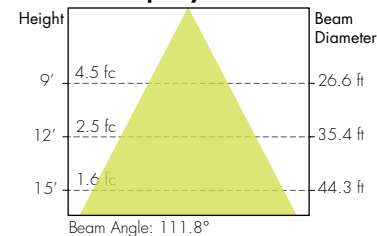
Static White Up Frosted



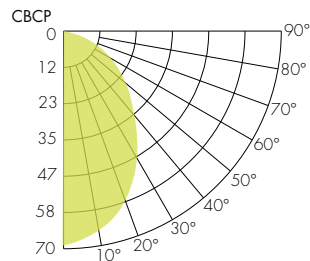
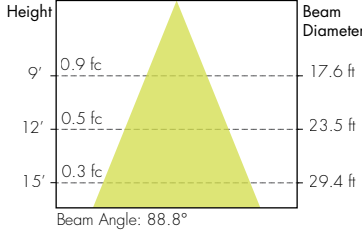
Static White Down Asymmetric Lens



Static White Up Asymmetric



Static White Black Lens



Static White Up Batwing

