

### Features

The PLA Channel is a linear aluminum extrusion that has been designed to fit many LED lighting needs and specifically high output applications. Substantial aluminum mass in profile provides excellent heat sink and physical protection for high power LEDs. The wide profile design can accommodate up to two rows of LED strips making the PLA linear aluminum extrusion ideal for bright general lighting applications. Extrusion and lens are field-cutable. End caps & joiners sold separately.

**Finish**

Silver anodized

**Mounting**

Screw Fasteners

**Diffuser Lens**

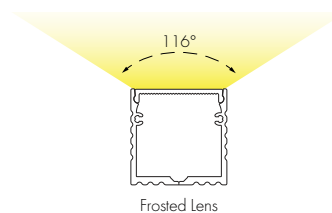
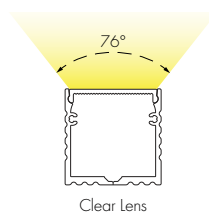
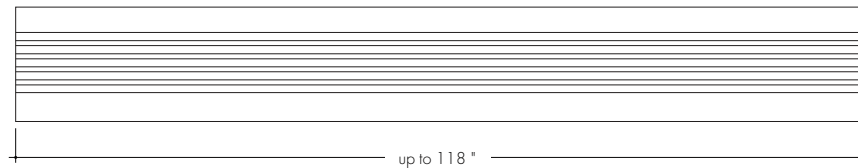
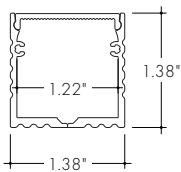
Polycarbonate, snap-in-place, UV resistant

**Warranty**

7 Years

**Declare.**

### Product Dimensions



Lens Options	
<b>Actual Length</b>	-39.40" -78.75" -118.19"
<b>Available Lenses</b>	- Clear - Frosted

**TRANSMISSION PERCENTAGE**  
(COMPARED TO LED TAPE WITHOUT CHANNEL)

LENS	TRANSMISSION %
Clear Lens	56%
Frosted Lens	34%

See LED tape spec sheet for lens dotting characteristics & compatibility

### Ordering code

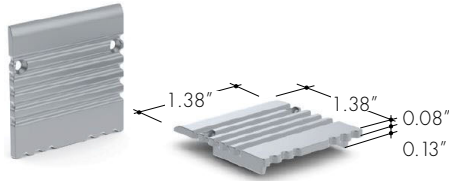
MODEL	LENGTH	LENS	FINISH
PLA - PLA Channel	39 - 39" 78 - 78" 118 - 118" <sup>1</sup>	C - Clear F - Frosted	SA - Silver Anodized

1 - For Channels and lenses over 96", incremental shipping charges will apply.

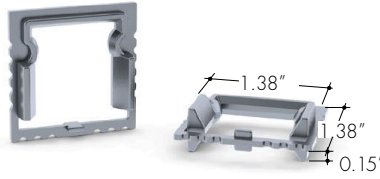
**Accessories**

All accessories sold separately.

**EC-PLA-SA**  
End Cap



**LC-PLA-SA**  
Joiner



**90LC-PLA-SA**  
90° joiner

