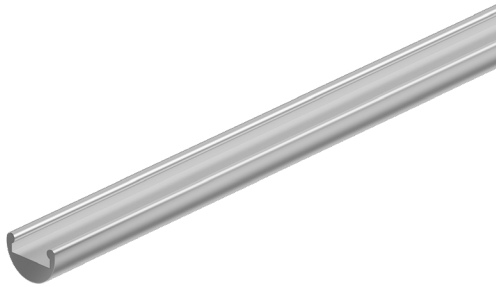


### Features

The MKRO Channel linear aluminum extrusion has been designed for smaller profile LED lighting needs. Crafted with a slender 0.53-inch diameter profile, this extrusion offers a sleek and modern housing solution, ensuring seamless integration for your LED lighting needs. Engineered with durable aluminum, it provides superior heat dissipation, extending the lifespan of your LEDs while maintaining optimal brightness. Its versatile design allows for easy installation in various settings, from residential to commercial applications, delivering not just illumination, but also a touch of sophistication to any environment. Channels come with specified Mounting Clips and End Caps.



#### Finish

Silver anodized, White, Black, Bronze

#### Mounting

Fixed Clip

#### Diffuser Lens

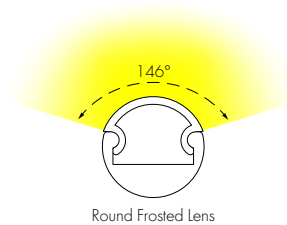
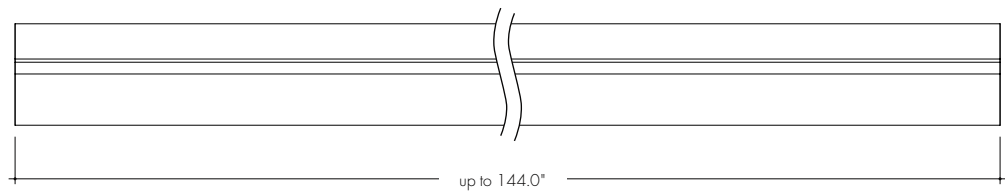
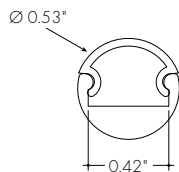
Polycarbonate, snap-in-place, UV resistant

#### Warranty

7 Years



### Product Dimensions



#### INCLUDED MOUNTING ACCESSORIES

EXTRUSION LENGTH	END CAP PAIR	FIXED MOUNTING CLIP
48"	1	3
72"	1	4
96"	1	5
120"	1	6
144"	1	7

Each pair of endcaps includes 1x H3 (no wire feed hole) and 1x H4 (with hole) where applicable. Additional endcaps and mounting clips are available for purchase.

#### TRANSMISSION PERCENTAGE (COMPARED TO LED TAPE WITHOUT CHANNEL)

LENS	TRANSMISSION %
Round Frosted Lens	39%

See LED tape spec sheet for lens dotting characteristics & compatibility

### Ordering Code

MODEL	LENGTH	LENS	MOUNTING <sup>2</sup>	FINISH <sup>4</sup>
MKROC-Myka Round Channel <sup>1</sup>	48-48" 72-72" 96-96" <sup>3</sup> 120-120" <sup>3</sup> 144-144" <sup>3</sup>	RF-Round Frosted	FC-Fixed Clip	BASE SA-Silver Anodized  POWDER COATED BK-Black BZ-Bronze WH-White

<sup>1</sup> - End Caps are included with channel, one of H3 (no hole) and one of H4 (with hole). Order additional End Caps as necessary.

<sup>2</sup> - Mounting Clips are included with channel. Refer to chart above for provided mounting clip quantities. Order additional Mounting Clips as necessary.

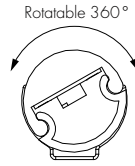
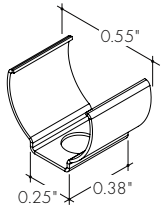
<sup>3</sup> - For Channels and Lenses over 96", incremental shipping charges will apply.

<sup>4</sup> - Powder Coat finishes may have extended lead times and price adder. Custom RALs are available, please consult Inside Sales with specific request.

All Channels come with a specified set of Mounting Clips and End Caps, see Ordering Code for details. Order additional Mounting Clips and End Caps as necessary.

### Mounting Clips

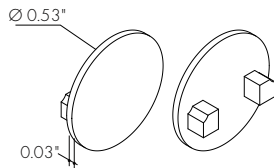
**MB-MKROC-XX**  
Fixed Clip available finishes  
**-FC**



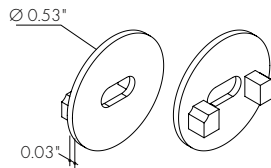
XX	Color
SA	Silver Anodized
WH	White
BK	Black
BZ	Bronze

### Endcaps

**EC-MKROC-RF-H3-XX**  
Endcap



**EC-MKROC-RF-H4-XX**  
Endcap with powerfeed opening



XX	Color
SA	Silver Anodized
WH	White
BK	Black
BZ	Bronze

Powerfeed opening 0.18" x 0.09"