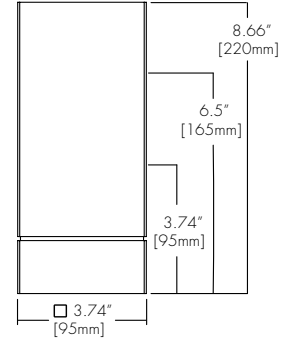
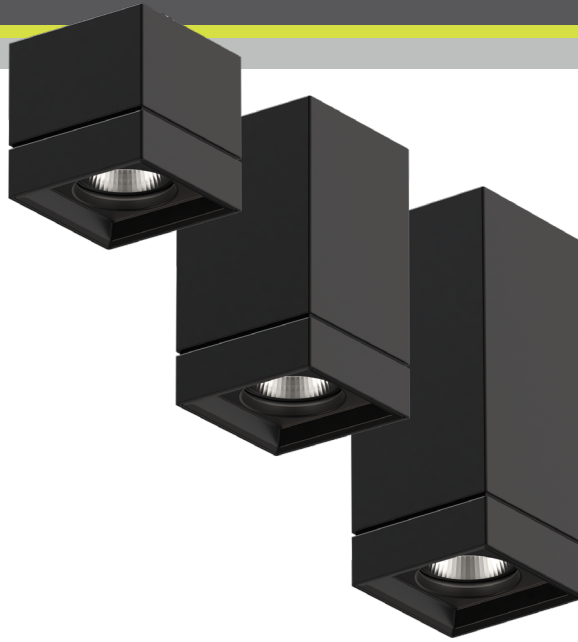


## Features

- Faceted and Smooth reflectors provide beam spreads between 15° to 60°.
- Four output options available up to 2000 lumens.
- Nine driver selections available to cover wide range of applications.
- Five year warranty.

## Finish Options

- White
- Black
- Silver
- Mocha
- Charcoal
- Cerulean
- Firebrick



## Technical Information

OUTPUT OPTIONS	700 lm	1000 lm	1500lm	2000lm
<b>Fixture wattage</b>	6.1 W	9.1 W	14.9 W	20.0 W
<b>Delivered Lumen at 3500K</b>	631 lm	998 lm	1469 lm	1939 lm
<b>Efficacy</b>	103 lm/W	110 lm/W	99 lm/W	97 lm/W
<b>Center Beam Candlepower (15° Faceted Reflector)</b>	4161 cd	6581 cd	9687 cd	12786 cd

CCT	Multiplier	CRI	TM-30		
			R <sub>f</sub>	R <sub>g</sub>	R <sub>9</sub>
<b>2500K</b>	0.81	92	90	104	77
<b>2700K</b>	0.92	92	91	102	61
<b>3000K</b>	0.97	95	92	102	61
<b>3500K</b>	1.00	95	93	101	72
<b>4000K</b>	1.07	95	92	103	68
<b>6500K</b>	1.05	96	91	100	89

## Ordering Code

Integral Driver Example: Fixture LET44-SM-S-07-25K-F15-NA-WH-WH-PHSD-NA  
 Remote Driver Example: Fixture LET44-SM-S-07-25K-F15-NA-WH-WH-PHSD-NA-HRM-LET44-SM-07-25K-PHSD-NA

### Fixture

MODEL	TYPE	SIZE	OUTPUT	CCT	OPTIC	ACCESSORY	BODY FINISH	BAFFLE FINISH
LET44 - Leto 44	SM - Surface Mount	S - Small <sup>1</sup> M - Medium L - Large	07 - 700 (6.1W) 10 - 1000 (9.1W) 15 - 1500 (14.9W) 20 - 2000 (20.0W)	25K - 2500K 27K - 2700K 30K - 3000K 35K - 3500K 40K - 4000K 65K - 6500K	F15 - 15 Degree, Faceted F30 - 30 Degree, Faceted F45 - 45 Degree, Faceted F60 - 60 Degree, Faceted S30 - 30 Degree, Smooth S45 - 45 Degree, Smooth	NA - No Accessory CL - Clear Lens DL - Diffusing Lens HC - Honeycomb Louver SL - Solite Lens	Standard WH - White BK - Black SL - Silver  Premium <sup>2</sup> MA - Mocha CC - Charcoal CR - Cerulean FB - Firebrick	Standard WH - White BK - Black SL - Silver  Premium <sup>2</sup> MA - Mocha CC - Charcoal CR - Cerulean FB - Firebrick

### DRIVER

### DRIVER OPTIONS<sup>6</sup>

- PHSD - Forward/Reverse Phase, 1% Dimming, 120V Only
- 010S - 0-10V, 1% Dimming, 120/277V
- 0103 - 0-10V, 1% Dimming, 347V Only<sup>4</sup>
- 010L - EldoLED, 0-10V, Linear, 0.1% Dimming, 120/277V<sup>4</sup>
- 010G - EldoLED, 0-10V, Log, 0.1% Dimming, 120/277V<sup>4</sup>
- DALI - EldoLED, DALI Protocol 2, DT-6, 0.1% Dimming, 120/277V<sup>4</sup>
- DALI8 - EldoLED, DALI Protocol 2, DT-8, 0.1% Dimming, 120/277V<sup>4</sup>
- LUTE - Lutron Hilume Ecodigital, 1% Dimming, 120V/277V<sup>3,4</sup>
- DMX - EldoLED, DMX, 0.1% Dimming, 120V/277V<sup>4</sup>

- NA - None
- EMG - Emergency Driver<sup>4,5</sup>

1 - Size Small max output is 1000 lumens.  
 2 - Premium finishes may have extended lead times. Custom RALs are available, please consult Inside Sales with specific request.  
 3 - LUTE driver is not available at 700 lumens.

4 - Drivers: 0103/010L/010G/DALI/DALI8/DMX/LUTE/EMG always require a remote driver.  
 5 - Emergency option comes prewired from factory with driver in remote housing. 8W of continuous power provided for a minimum of 90 minutes. Must be installed within 30 feet of luminaire using 18 AWG wire. Not available with 0103, DMX, DALI8 or LUTE Driver.  
 6 - AWNR/CSMB available upon request, contact Senso for details.

CONTACT FACTORY FOR MORE OPTIONS.

## Lens

**CL**  
Clear Lens



**DL**  
Diffusing Lens



**HC**  
Honeycomb



**SL**  
Solite Lens



## Optics

**FXF** (15°, 30°, 45°, 60°)  
Faceted Reflector



**SXX** (30°, 45°)  
Smooth Reflector



## Remote Driver Housing

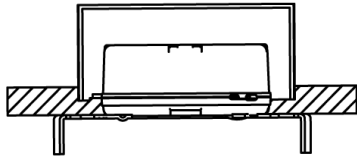
Depending on the options selected in the order code on page 1, a Remote Driver Housing may be required. This will automatically be generated and put on your order as necessary.

REMOTE DRIVER	MODEL	OUTPUT	CCT	DRIVER	DRIVER OPTIONS
HRM-Housing, Remote	LET44-SM-Leto 44 Surface Mount	Same as Fixture	Same as Fixture	Same as Fixture	Same as Fixture

Maximum mounting distance to luminaire using 18 AWG wire								
PHSD	010S	0103	010L	010G	DALI	DALI8	LUTE	DMX
16'	16'	16'	72'	72'	72'	72'	15'	149'

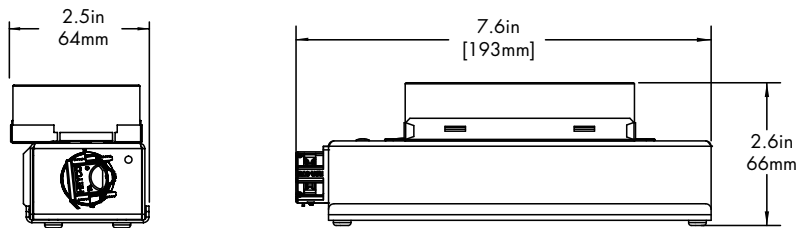
### 4" J-box

Minimum volume required to mount drivers in junction box: 70mm x 40mm x 30mm.



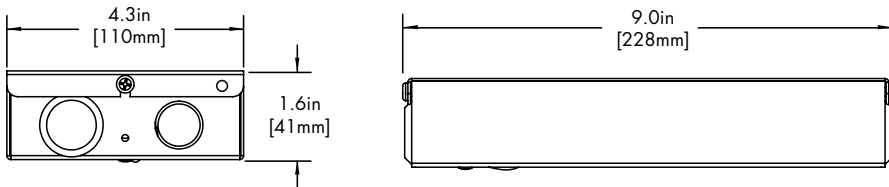
Driver
PHSD
010S

### HRM Single with Externally Mounted Driver



Driver
0103
010L
010G
DALI
LUTE

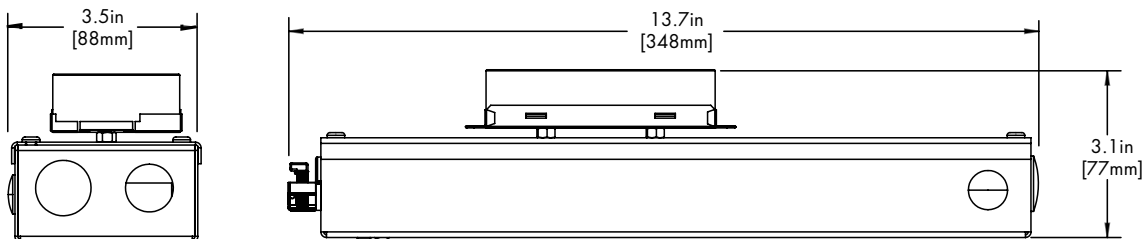
### HRM Double



Driver
DALI8
DMX

### EMG Emergency Driver

120 minute EMG operation time.



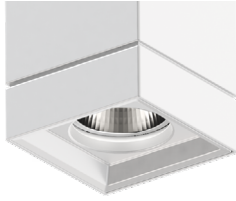
Driver
EMG

## Standard Finish

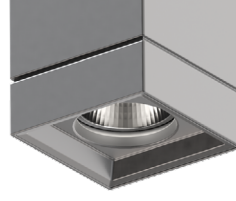
**BK**  
Black



**WH**  
White



**SL**  
Silver



## Premium Finish

Two tone with Black Baffle Finish. Any combination may be used for baffle and body finishes.

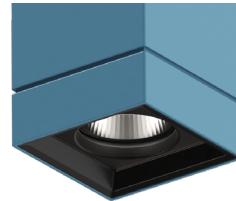
**MA**  
Mocha



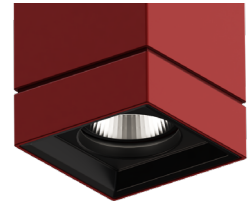
**CC**  
Charcoal



**CR**  
Cerulean



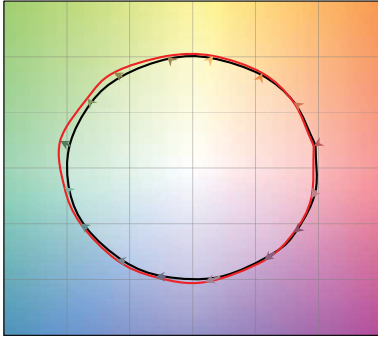
**FB**  
Firebrick



## TM-30

**2500K**

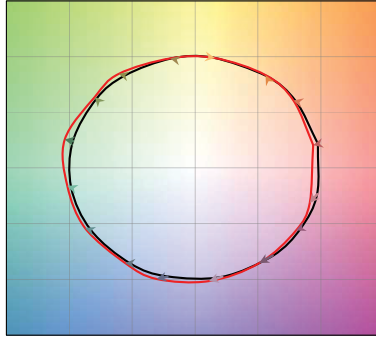
COLOR VECTOR GRAPHIC



— Reference Source — Test Source

**2700K**

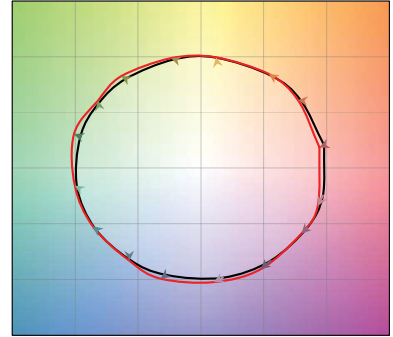
COLOR VECTOR GRAPHIC



— Reference Source — Test Source

**3000K**

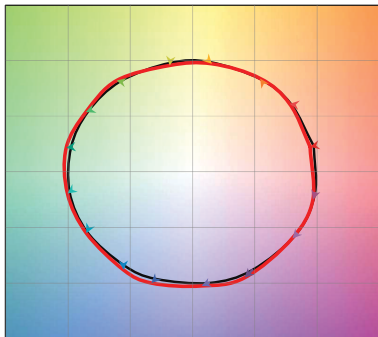
COLOR VECTOR GRAPHIC



— Reference Source — Test Source

**3500K**

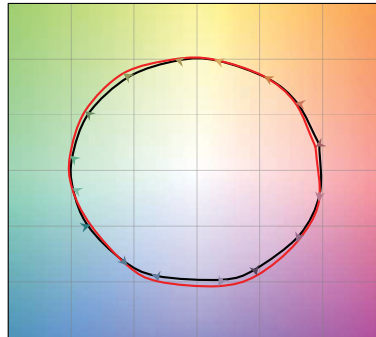
COLOR VECTOR GRAPHIC



— Reference Source — Test Source

**4000K**

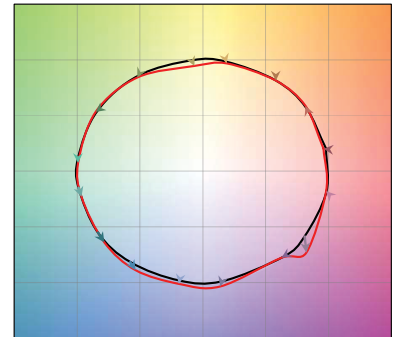
COLOR VECTOR GRAPHIC



— Reference Source — Test Source

**6500K**

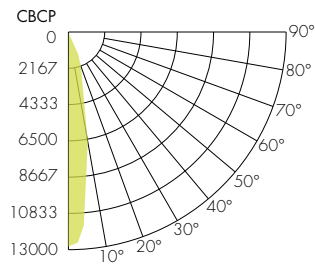
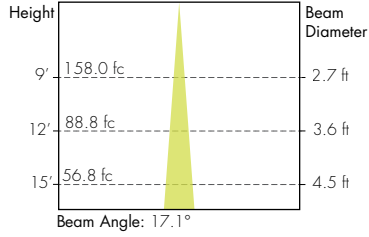
COLOR VECTOR GRAPHIC



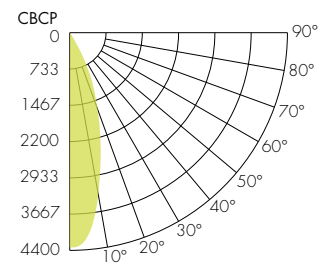
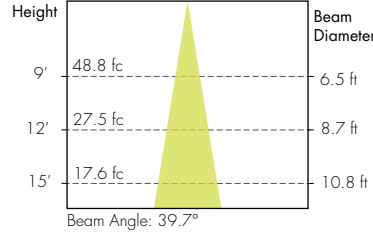
— Reference Source — Test Source

## Photometry

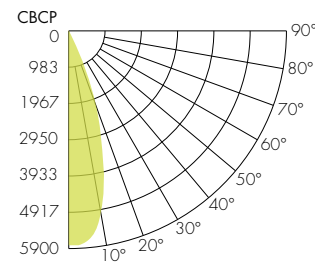
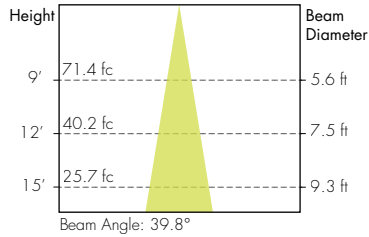
### 15° Faceted Reflector



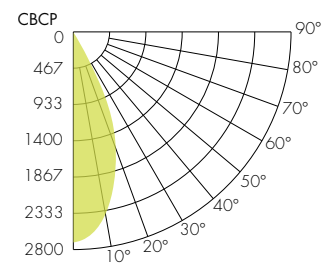
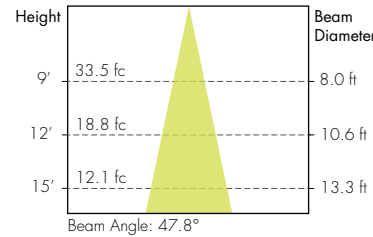
### 30° Smooth Reflector



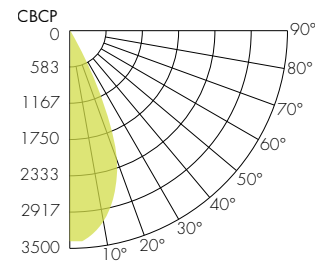
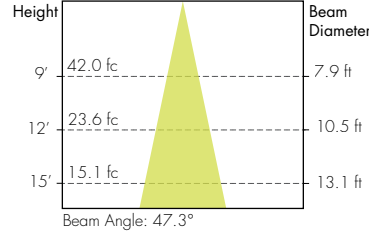
### 30° Faceted Reflector



### 45° Smooth Reflector



### 45° Faceted Reflector



### 60° Faceted Reflector

