

# LineLED Dynamic Color Series LLRGBW120-IP20



\* MFG Model Number: LLRGBW36-XX



## Features

LLRGBW120-IP20 is a small profile LED strip incorporating 4 discrete emitters in each LED - red, green, blue, and 3000K white. Increased pitch provides more continuous light, while a High Output option offers incredible brightness. 120 LEDs per foot. Luminii attention to color quality provides balanced output across the color gamut, as well as true, balanced white.

### Mounting

LED strip is equipped with 3M™ adhesive transfer tape (9472LE).

### Applications

Indoor only - millwork, cove, architectural reveals, undercabinet, display case, handrail, accent lighting.

### Approvals

CE, UKCA, UL, Class 2

### Operating voltage

24 VDC

### Average Life (L70)

50,000 hours

### Warranty

7 years



RoHS

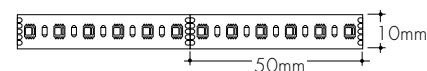
CE

UKCA



## Technical Specifications

TYPE	LLRGBW120-IP20	
OUTPUT OPTIONS	SO	HO
Lumens Output (all channels full on)	696 lm/m	1152 lm/m
Average Power Consumption	13.1 W/m	24.9 W/m
Cutting Increment (mm)	50 mm	
Pitch Length	8.4 mm	
Efficacy	53 lm/W	46 lm/W
Max Run Length (in series)	7.9 m	4.0 m
Dimensions	10 mm W x 1.8 mm H	



### RGBW (3000K)

Tape	CRI	TM-30		
		R <sub>f</sub>	R <sub>g</sub>	R <sub>9</sub>
LLRGBW120-IP20-SO	95	94	106	82
LLRGBW120-IP20-HO	95	93	106	84

Color	Dominant Wavelength	LLRGBW120-IP20SO	LLRGBW120-IP20HO
Red	620 nm	115 lm/m	207 lm/m
Green	525 nm	312 lm/m	538 lm/m
Blue	467 nm	69 lm/m	108 lm/m
White	NA	220 lm/m	361 lm/m

## Ordering code

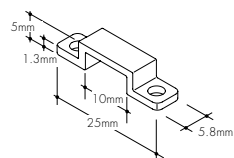
MODEL	OUTPUT	CCT	REEL SIZE
LLRGBW120-IP20 - LineLED Dynamic Color, Dry Location	SO - Standard HO - High	18K-30K - 1800K - 3000K 27K-65K - 2700K - 6500K	R10m - Reel, 10 meter



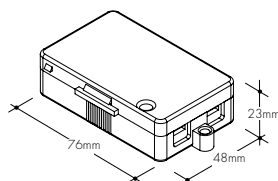
# LineLED Dynamic Color Series LLRGBW120-IP20

## Accessories

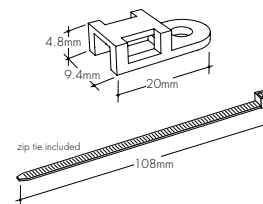
### CL1 Mounting clip



### LVSP-IP20-4T-BK Low Voltage, 4 Terminal Splice Box, Black



### LL-ZIP Cable/Wire Strain Relief Clip



Recommended every 300mm when LineLED strip is facing down

## Lens Options / Light Transmission



Clear



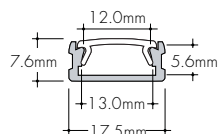
Half (50%)  
Frosted



Frosted



### KS Channel (KSC-XX)



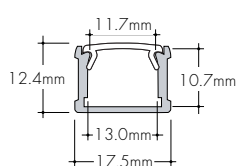
### Ordering code

MODEL	LENGTH	LENS	MOUNTING <sup>1</sup>	FINISH
KSC-KS Channel	2M-2 meter	C-Clear HF-Half Frosted F-Frosted	FC-Fixed Clip FC45-Fixed Clip 45°	SA-Silver Anodized

1 - Extrusion comes with 4 selected clips and 2 end caps.



### KM Channel (KMC-XX)



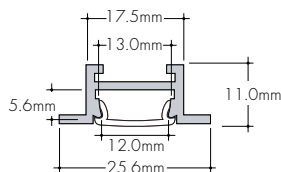
### Ordering code

MODEL	LENGTH	LENS	MOUNTING <sup>1</sup>	FINISH
KMC-KM Channel	2M-2 meter	C-Clear HF-Half Frosted F-Frosted	FC-Fixed Clip FC45-Fixed Clip 45°	SA-Silver Anodized

1 - Extrusion comes with 4 selected clips and 2 end caps.



### KRS Channel (KRSC-XX)



### Ordering code

MODEL	LENGTH	LENS	MOUNTING <sup>1</sup>	FINISH
KRSC-KRS Channel	2M-2 meter	C-Clear HF-Half Frosted F-Frosted	HS-Hard Surface Mounting Bracket GS-Gypsum Surface Mounting Bracket	SA-Silver Anodized

1 - Extrusion comes with 4 selected clips and 2 end caps.

## Installation

All mounting channels are field cuttable using miter saw with circular blade suitable for cutting aluminum.

## Ordering

Extrusion are sold separately.



## Lens Options / Light Transmission



Clear



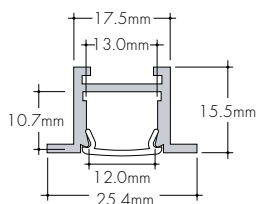
Half (50%)  
Frosted



Frosted



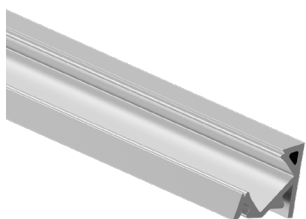
KRM Channel (KRM-XX)



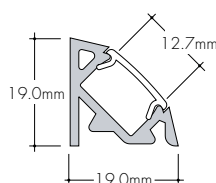
### Ordering code

MODEL	LENGTH	LENS	MOUNTING <sup>1</sup>	FINISH
KRMC-KRM Channel	2M-2 meter	C-Clear HF-Half Frosted F-Frosted	HS-Hard Surface Mounting Bracket GS-Gypsum Surface Mounting Bracket	SA-Silver Anodized

1 - Extrusion comes with 4 selected clips and 2 end caps.



K45V Channel (K45V-XX)



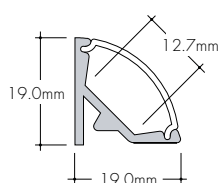
### Ordering code

MODEL	LENGTH	LENS	MOUNTING <sup>1</sup>	FINISH
K45VC-K45V Channel	2M-2 meter	C-Clear HF-Half Frosted F-Frosted	CB-Concealed Bracket	SA-Silver Anodized

1 - Extrusion comes with 4 selected clips and 2 end caps.



K45R Channel (K45R-XX)



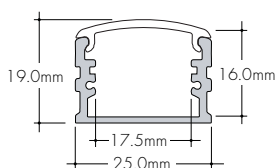
### Ordering code

MODEL	LENGTH	LENS	MOUNTING <sup>1</sup>	FINISH
K45RC-K45R Channel	2M-2 meter	C-Clear HF-Half Frosted F-Frosted	CB-Concealed Bracket	SA-Silver Anodized

1 - Extrusion comes with 4 selected clips and 2 end caps.



Basics X-large Channel (BXC-XX)



### Ordering code

MODEL	LENGTH	LENS	MOUNTING <sup>1</sup>	FINISH
BXC-Basics X-large Channel	2M-2 meter	F-Frosted	FC-Fixed Clip	SA-Silver Anodized

1 - Extrusion comes with 4 selected clips and 2 end caps.

## Installation

All mounting channels are field cuttable using miter saw with circular blade suitable for cutting aluminum.

## Ordering

Extrusion are sold separately.

