

LineLED Dynamic Color Series LLRGB140-IP20

Features



* MFG Model Number: LLRGB42-XX



LLRGB140-IP20 is a small profile, bright, color-changing LED strip. Increased pitch provides more continuous light, while a High Output option offers incredible brightness. Luminii attention to color quality provides balanced output across the color gamut, allowing production of millions of beautiful colors.

Mounting

LED strip is equipped with 3M™ adhesive transfer tape (9472LE).

Applications

Indoor only - millwork, cove, architectural reveals, undercabinet, display case, handrail, accent lighting.

Approvals

CE, UKCA, UL, Class 2

Operating voltage

24 VDC

Average Life (L70)

50,000 hours

Warranty

7 years



RoHS

CE

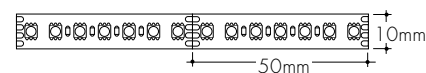
UKCA



Technical information

| TYPE | LLRGB140-IP20 | |
|--------------------------------------|--------------------|---------------|
| OUTPUT OPTIONS | SO | HO |
| Lumens Output (all channels full on) | 689 lm/m | 1014 lm/m |
| Average Power Consumption | 14.8 W/m | 27.2 W/m |
| Cutting Increment (mm) | 50 mm | |
| Pitch Length | 7.0 mm | |
| Efficacy | 47 lm/W | 37 lm/W |
| Max Run Length (in series) | 8.5 m | 4.0 m |
| Dimensions | 10 mm W x 1.8 mm H | |
| Ambient Operating Temperature Range* | - 20°C – 50°C | - 20°C – 35°C |

* Ambient Operating Temperature Range to maintain L70 of 50K+ hours in normal conditions. Exceeding Ambient Operating Temperature Range may result in decreased life/output. Consult Technical Support for specific inquiries.



| Dominant Wavelength | LLRGB140-IP20SO | LLRGB140-IP20HO |
|---------------------|-----------------|-----------------|
| Red | 620 nm | 161 lm/m |
| Green | 525 nm | 463 lm/m |
| Blue | 467 nm | 105 lm/m |

Ordering code

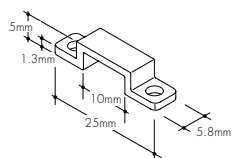
| MODEL | OUTPUT | CCT | REEL SIZE |
|--|----------------------------|--|-----------------------|
| LLRGB140-IP20 - Line LED Dynamic Color, Dry Location | SO - Standard HO - High | 18K-30K - 1800K - 3000K 27K-65K - 2700K - 6500K | R10m - Reel, 10 meter |



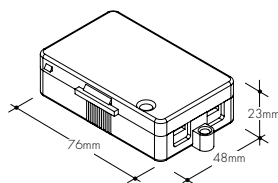
LineLED Dynamic Color Series LLRGB140-IP20

Accessories

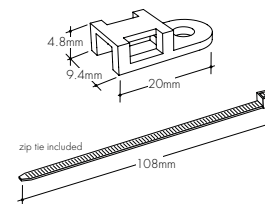
CL1 Mounting clip



LVSP-IP20-4T-BK Low Voltage, 4 Terminal Splice Box, Black



LL-ZIP Cable/Wire Strain Relief Clip



Recommended every 300mm when LineLED strip is facing down

Lens Options / Light Transmission



Clear



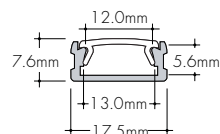
Half (50%)
Frosted



Frosted



KS Channel (KSC-XX)



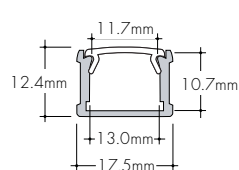
Ordering code

| MODEL | LENGTH | LENS | MOUNTING ¹ | FINISH |
|----------------|------------|---|--------------------------------------|--------------------|
| KSC-KS Channel | 2M-2 meter | C-Clear HF-Half Frosted F-Frosted | FC-Fixed Clip FC45-Fixed Clip 45° | SA-Silver Anodized |

¹ - Extrusion comes with 4 selected clips and 2 end caps.



KM Channel (KMC-XX)



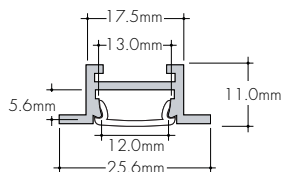
Ordering code

| MODEL | LENGTH | LENS | MOUNTING ¹ | FINISH |
|----------------|------------|---|--------------------------------------|--------------------|
| KMC-KM Channel | 2M-2 meter | C-Clear HF-Half Frosted F-Frosted | FC-Fixed Clip FC45-Fixed Clip 45° | SA-Silver Anodized |

¹ - Extrusion comes with 4 selected clips and 2 end caps.



KRS Channel (KRSC-XX)



Ordering code

| MODEL | LENGTH | LENS | MOUNTING ¹ | FINISH |
|------------------|------------|---|--|--------------------|
| KRSC-KRS Channel | 2M-2 meter | C-Clear HF-Half Frosted F-Frosted | HS-Hard Surface Mounting Bracket GS-Gypsum Surface Mounting Bracket | SA-Silver Anodized |

¹ - Extrusion comes with 4 selected clips and 2 end caps.

Installation

All mounting channels are field cuttable using miter saw with circular blade suitable for cutting aluminum.

Ordering

Extrusion are sold separately.



Lens Options / Light Transmission



Clear



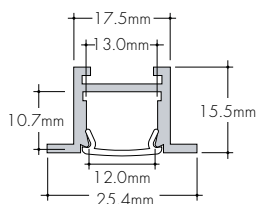
Half (50%)
Frosted



Frosted



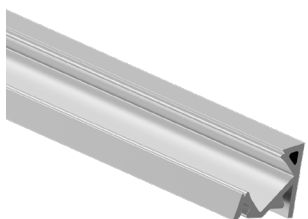
KRM Channel (KRM-C-XX)



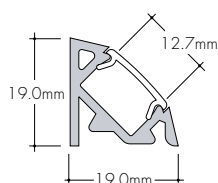
Ordering code

| MODEL | LENGTH | LENS | MOUNTING ¹ | FINISH |
|------------------|------------|---|--|--------------------|
| KRMC-KRM Channel | 2M-2 meter | C-Clear HF-Half Frosted F-Frosted | HS-Hard Surface Mounting Bracket GS-Gypsum Surface Mounting Bracket | SA-Silver Anodized |

1 - Extrusion comes with 4 selected clips and 2 end caps.



K45V Channel (K45V-XX)



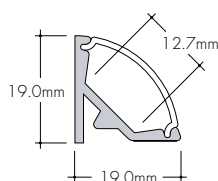
Ordering code

| MODEL | LENGTH | LENS | MOUNTING ¹ | FINISH |
|--------------------|------------|---|-----------------------|--------------------|
| K45VC-K45V Channel | 2M-2 meter | C-Clear HF-Half Frosted F-Frosted | CB-Concealed Bracket | SA-Silver Anodized |

1 - Extrusion comes with 4 selected clips and 2 end caps.



K45R Channel (K45R-XX)



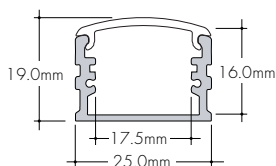
Ordering code

| MODEL | LENGTH | LENS | MOUNTING ¹ | FINISH |
|--------------------|------------|---|-----------------------|--------------------|
| K45RC-K45R Channel | 2M-2 meter | C-Clear HF-Half Frosted F-Frosted | CB-Concealed Bracket | SA-Silver Anodized |

1 - Extrusion comes with 4 selected clips and 2 end caps.



Basics X-large Channel (BXC-XX)



Ordering code

| MODEL | LENGTH | LENS | MOUNTING ¹ | FINISH |
|----------------------------|------------|-----------|-----------------------|--------------------|
| BXC-Basics X-large Channel | 2M-2 meter | F-Frosted | FC-Fixed Clip | SA-Silver Anodized |

1 - Extrusion comes with 4 selected clips and 2 end caps.

Installation

All mounting channels are field cuttable using miter saw with circular blade suitable for cutting aluminum.

Ordering

Extrusion are sold separately.

