

Features

Kurba Large is a dot free direct view, highly versatile, energy efficient and flexible LED strip. Suitable for submersion max 6 ft deep and capable of horizontal/side bends and vertical/top bends with a 6" bending radius.

Output Option

Smart Pixel offerings allow for infinite color combinations with cascading and chasing effects

Average Life

50,000 hours

Approvals

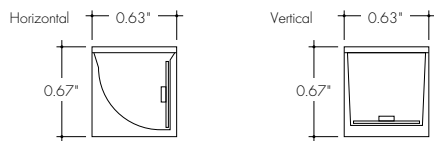
24VDC Class 2 wet listed, IP68

Warranty

3 years

Materials

PVC Material for high chlorine resistance



Finish Options (see page 2 for additional information)

Base White

Premium Black Red Green Blue



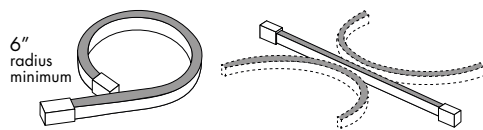
Technical Information

Bending Direction	Horizontal	Vertical
Output	SPI26SO	SPI26SO
Light Output at 3000K	242 lm/ft	286 lm/ft
Average Power Consumption at 4'	6.71 W/ft	6.71 W/ft
Efficacy	36 lm/W	43 lm/W
Ordering Increment	3.28"	3.28"
Maximum Run Length (In Series)	13'	13'
Operating Temperature Range	-40°F to 113°F	-40°F to 113°F
Control/Dimming Protocol	SPI Protocol UCS 2904	SPI Protocol UCS 2904

Constraints

Horizontal Bend Direction

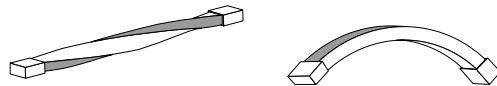
Bend LED in these positions only to avoid damage



Illuminated surface shown in gray

Horizontal Prohibited Bends

Twisting or bending LED in these positions will cause damage

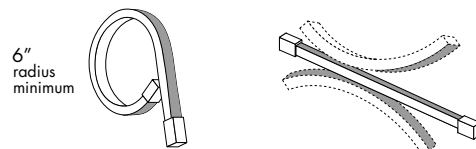


Illuminated surface shown in gray

Do not make sharp bends near the endcap

Vertical Bend Direction

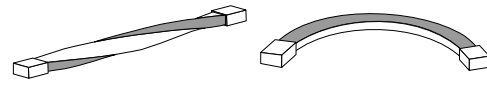
Bend LED in these positions only to avoid damage



Illuminated surface shown in gray

Vertical Prohibited Bends

Twisting or bending LED in these positions will cause damage



Illuminated surface shown in gray

Do not make sharp bends near the endcap

Ordering Code

MODEL	RATING	BEND DIRECTION	LENGTH	OUTPUT ¹	CCT ²	LENS ³	MOUNTING	FINISH ⁴	FEED POSITION LEFT	FEED POSITION RIGHT
KBL - Kurba Large	PL - Pool	HB - Horizontal Bending VB - Vertical Bending	SEE PCC CHART ON PAGE 5	SPI26SO - Smart Pixel Control, Standard Output	RGB26K - RGB 2600K RGB27K - RGB 2700K RGB30K - RGB 3000K RGB40K - RGB 4000K	F - Frosted BL - Black lens	NA - See Page 4 for orderable mounting accessories	WH - White BK - Black RED - Red GRN - Green BLU - Blue	INJECTION MOLD IME - End Feed 1 IMB - Back Feed 1 IMSA - Side 1 Feed IMSB - Side 2 Feed ⁴ NPF - No Power Feed ⁵	INJECTION MOLD IME - End Feed 1 IMB - Back Feed 1 IMSA - Side 1 Feed IMSB - Side 2 Feed ⁴ NPF - No Power Feed ⁵

1 - Title 24 JA8 compliance achievable, contact factory for specific requests
2 - Black Lens only available with RGB26K CCT options

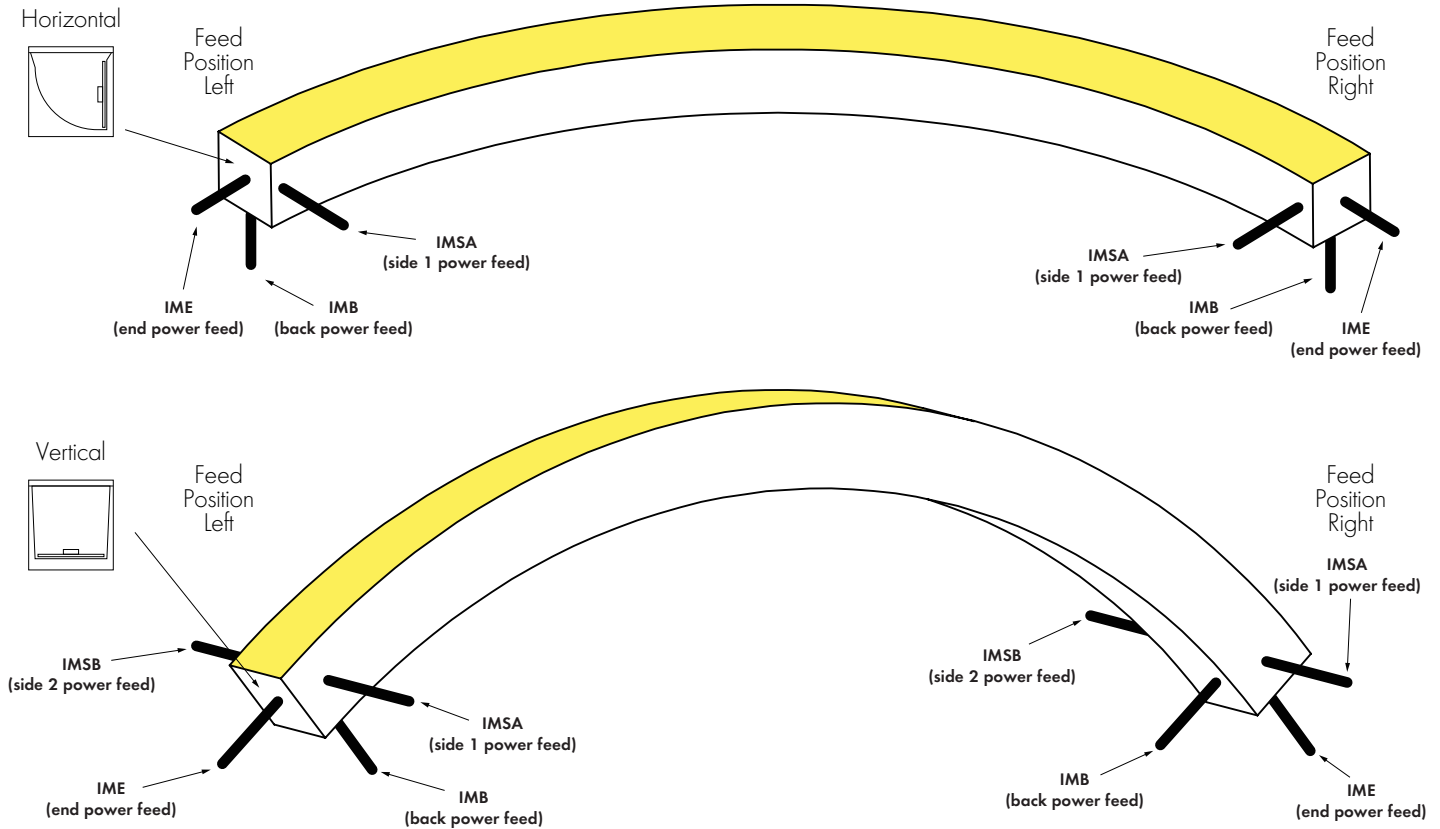
3 - BL - Black Lens can only be used with BK - Black Finish
4 - Red, Green, and Blue finishes have an MOQ of 350ft

5 - IMSB - Side 2 Feed not available with HB - Horizontal Bending
6 - NPF-NPF for Feed Position 1&2 is not a valid configuration option

Feeds come with 30' wire leads

Powerfeeds and Connectors

Power Feed Position Options and Orientation

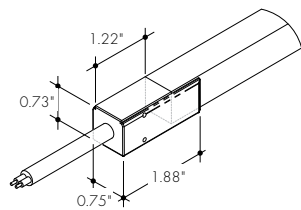


NOTE: IMSB - Side 2 Feed not available with HB - Horizontal Bending

Linking and Extension Cable Options

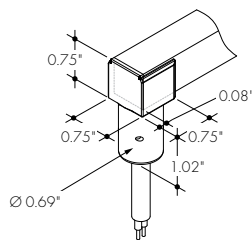
END CONNECTOR

Injection-molded End Connector
-IME



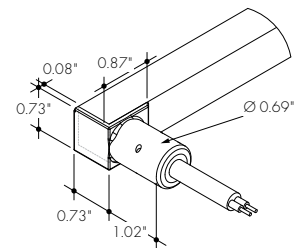
BACK CONNECTOR

Injection-molded Back Connector
-IMB



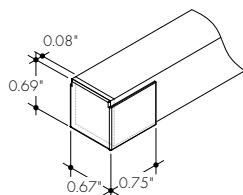
SIDE CONNECTOR

Injection-molded Side Connector
-IMSA and -IMSB



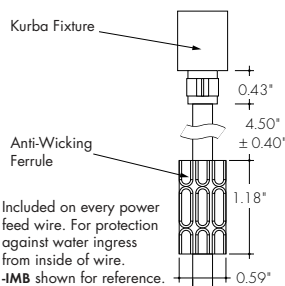
ENDCAP (NO CONNECTOR)

Injection-molded Cap (No Connector)
-NPF

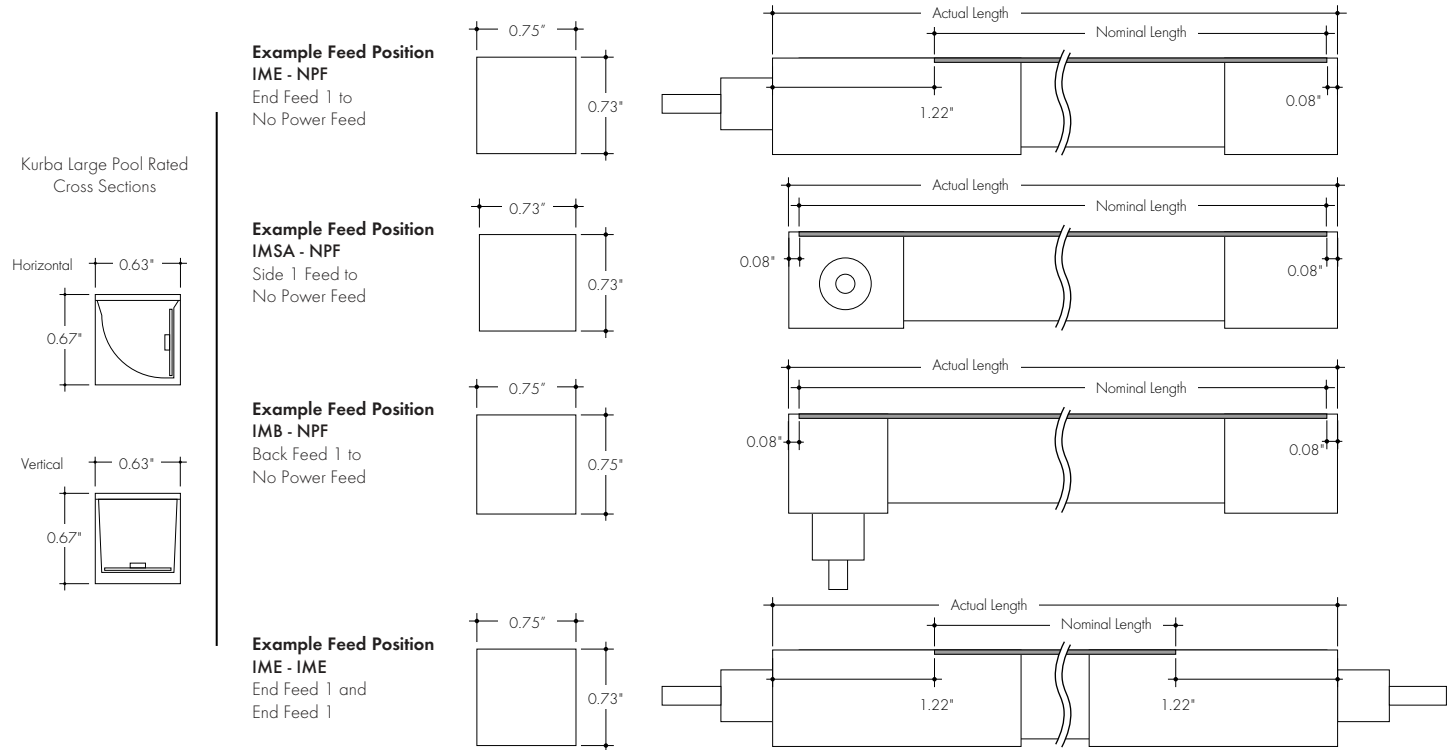


ANTI-WICKING FERRULE

Included on every power feed wire



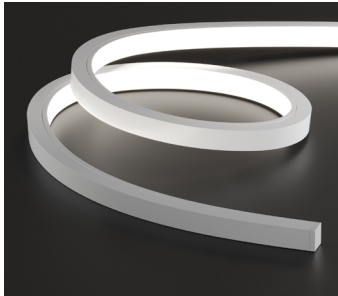
Product Dimensions



Finish Options

- A wide variety of finish options allowing complete customization of style and aesthetic.
- Red, Green, and Blue finishes have an minimum order quantity of 350ft

White Base



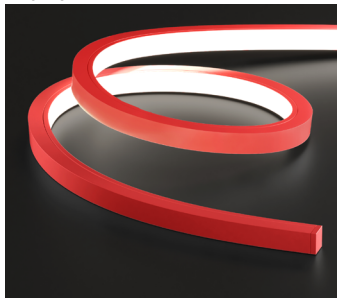
Kurba's base finish is a crisp white which brings a timeless, clean aesthetic that brightens and enhances any space

Black Finish w/ Black Lens Premium



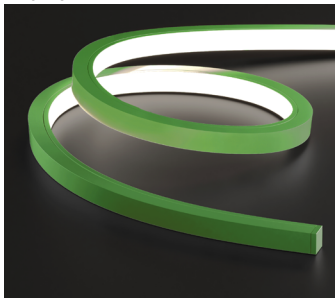
Also available with a blackout aesthetic - the Black Lens paired with the Black Finish provides for a sleek, all black profile that keeps the strip concealed in the off-state.

Red Premium



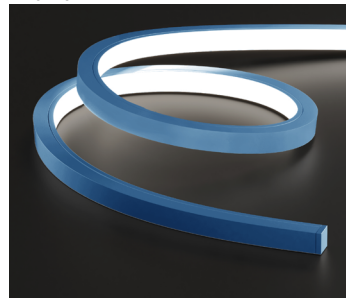
Red adds a bright and bold statement, perfect for creating a striking and dynamic ambiance with its vibrancy

Green Premium



Green embraces a refreshing and natural feel, reminiscent of emerald green, add touch of tranquility and harmony to your space with this option

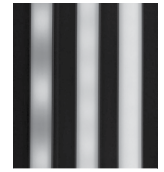
Blue Premium



Blue evokes the serenity of the deep sea by combining vivid cobalt and azure tones.

Light Transmission and Dotting

Output Options	Lens/Accessory					
	Silicone Frosted/ White Finish	Silicone Frosted/ Red Finish	Silicone Frosted/ Green Finish	Silicone Frosted/ Blue Finish	Silicone Frosted/ Black Finish	Black Lens/ Black Finish
SPI26SO	ND	ND	ND	ND	ND	ND
Transmission Percentage	100%	80%	80%	80%	80%	17%

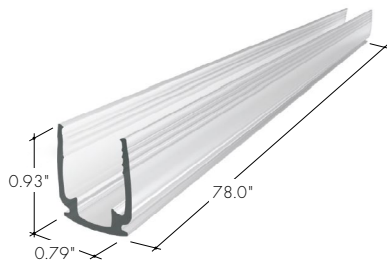


CD SD ND
CD - Clear Dotting
SD - Slight Dotting
ND - No Dotting

Mounting Accessories and Optional Connectors

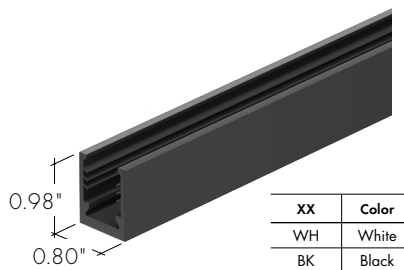
MC-NFP-KBL-78

Thickened Plastic Mounting Channel for underwater application, 78"



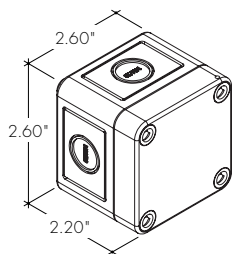
MC-KBL-BANP-3D-SM-39-XX

KBL Mounting Channel, Bendable Silicone Profile, 3D Bending, Surface Mount, 39", 6" bending radius



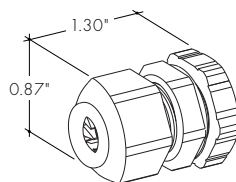
LVSP-WET

Splice box: wet rated, low voltage, gray



LVSP-WET-CM

Connector for splice box, low voltage for cable management, gray



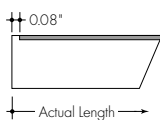
SPI26SO | Power Consumption Per Fixture Length

Based on operation with PDCU series of power supplies. Use Actual Length for Order Code Entry.
 Tolerance for Actual Lengths less than 6 ft is +/- 0.2", Actual Lengths between 6 ft and 16 ft is +/- 0.3", and Actual Lengths greater than 16 ft is +/- 0.6"
 A - End Connector at both ends of Kurba (1.22" + 1.22" added to overall length)
 B - End Connector at one end of Kurba and No Connector or Back Connector or Side Connector at other end of Kurba (1.22" + 0.08" added to overall length)
 C - Any combination of No Connector, Back Connector, or Side Connector on each end of Kurba (0.08" + 0.08" added to overall length)

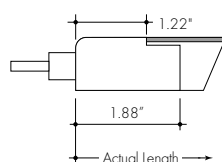
Nominal Length (in)	Actual Length (in)					Pixel QTY	Nominal Length (in)	Actual Length (in)					Pixel QTY
	W	A	B	C	W			A	B	C			
7	5.0	9.0	7.9	6.7	2	125	63.9	127.1	126.0	124.8	38		
10	6.9	12.3	11.1	10.0	3	128	65.6	130.4	129.2	128.1	39		
(1 ft) 14	8.7	15.6	14.4	13.3	4	(11 ft) 32	67.2	133.7	132.5	131.4	40		
17	10.5	18.8	17.7	16.6	5	135	68.9	136.9	135.8	134.7	41		
20	12.4	22.1	21.0	19.8	6	138	70.5	140.2	139.1	137.9	42		
(2 ft) 23	14.2	25.4	24.3	23.1	7	141	72.2	143.5	142.4	141.2	43		
27	16.0	28.7	27.5	26.4	8	(12 ft) 145	73.8	146.8	145.7	144.5	44		
30	17.9	32.0	30.8	29.7	9	148	75.5	150.1	148.9	147.8	45		
33	19.7	35.2	34.1	33.0	10	151	77.1	153.4	152.2	151.1	46		
(3 ft) 36	21.5	38.5	37.4	36.2	11	(13 ft) 155	78.8	156.6	155.5	154.4	47		
40	23.4	41.8	40.7	39.5	12								
43	25.2	45.1	43.9	42.8	13								
46	27.0	48.4	47.2	46.1	14								
(4 ft) 50	28.9	51.7	50.5	49.4	15								
53	27.6	54.9	53.8	52.7	16								
56	29.3	58.2	57.1	55.9	17								
(5 ft) 59	30.9	61.5	60.4	59.2	18								
63	32.6	64.8	63.6	62.5	19								
66	34.2	68.1	66.9	65.8	20								
69	35.9	71.3	70.2	69.1	21								
(6 ft) 73	37.5	74.6	73.5	72.3	22								
76	39.2	77.9	76.8	75.6	23								
79	40.8	81.2	80.0	78.9	24								
(7 ft) 82	42.5	84.5	83.3	82.2	25								
86	44.1	87.7	86.6	85.5	26								
89	45.8	91.0	89.9	88.7	27								
92	47.4	94.3	93.2	92.0	28								
(8 ft) 96	49.1	97.6	96.4	95.3	29								
99	50.7	100.9	99.7	98.6	30								
102	52.4	104.1	103.0	101.9	31								
105	54.0	107.4	106.3	105.1	32								
(9 ft) 109	55.7	110.7	109.6	108.4	33								
112	57.3	114.0	112.8	111.7	34								
115	59.0	117.3	116.1	115.0	35								
(10 ft) 118	60.6	120.5	119.4	118.3	36								
122	62.3	123.8	122.7	121.5	37								

Note: all values are rounded to the nearest 0.1 inch

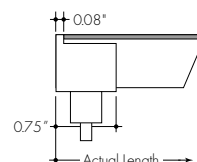
Injection Molded End Cap (IME)



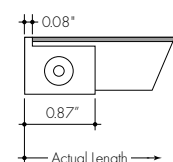
Injection Molded End Power Feed (IME)



Injection Molded Bottom Power Feed (IMB)



Injection Molded Side Power Feed (IMSA)



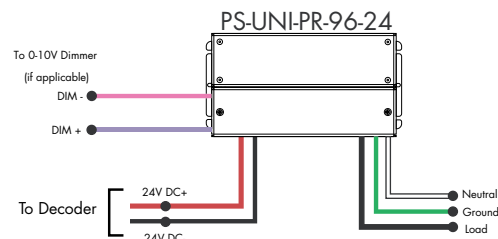
Power Supplies

See Power Supply instructions and spec sheet for wiring information. For a complete list of compatible dimmers, see Compatible Dimming Chart on the Resources page.

Universal Power Supply 1% 120VAC - 277VAC

MODEL	INPUT CONTROL	ENVIRONMENT	POWER	OUTPUT
PS - Pool & Spa Rated Power Supply	UNI - 0-10V, Phase Dimming	PR - Pool Rated	96 - 96 W	24 - 24 VDC

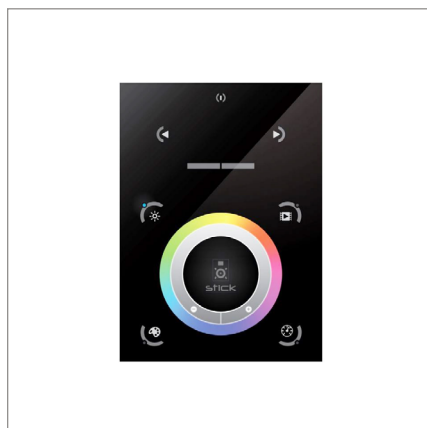
0-10V dims down to 1%, MLV/ELV/TRIAC dims down to 1%.
For a complete list of compatible dimmers, see [Compatible Dimming Chart](#) on the Resources page.



MODELS	PS-UNI-PR-96-24
Length	8.71"
Width	4.56"
Depth	1.86"

Touch DMX Controller

Touchscreen digital LED controller



ORDERING CODE

MODEL

TSDMX-E

TSDMX-E - Touchscreen DMX controller

Programmable advanced DMX512 lighting controller featuring a touch-screen interface. Operates as stand alone controller or integrated with most architectural lighting control systems. Can controller endless DMX512 enabled devices.

Mounts to standard single or dual gang wall box with the included power supply inside the junction box. Terminal block design for power and data connections.

Features

- Sleek glass design which sits 0.43" from the wall
- Graphical color display to show selected environment
- Color/dimmer/speed palette
- Color temperature mixing
- Touch sensitive buttons. No mechanical parts
- Touch sensitive wheel allows for accurate color selection
- Multi-zone microSD memory
- Multi-room control with 500 scenes, 10 zones
- 1024 DMX channels. Control 340 RGB fixtures
- USB & Ethernet connectivity for programming and control

Power Supply

7 VDC (included)

Programmability

PC, Mac, Tablet, Smartphone

Output Signal

DMX512 (1024 channels)

Color Parameters

- Brightness
- Saturation
- Speed of color changing sequence
- Fading / dimming / brightness

Smart Pixel Decoder

SPI signal to DMX signal decoder



ORDERING CODE

MODEL

SR-DMX-SPI

SR-DMX-SPI - Smart Pixel Decoder

The SR-DMX-SPI is a smart LED pixel decoder that controls RGB/RGBW pixel LED strips with SPI signal. Designed with an OLED backlit panel, the pixel controller allows for easy configuration of most settings. Four push buttons are available for control of the LED functions.

*For pixel only.

Features

- 2 in 1 in-Wall Controller: DMX Control or Wireless RGB-W
- SPI signal output for RGB/RGBW pixel light control
- DMX512 controllable and RF/WIFI remote controllable
- Capable of addressing up to 1020 RGB pixels & 765 RGBW pixels
- OLED panel allows for easy configuration

Operating Voltage

12 - 36V DC

Power capacity

up to 96W at 24V

Operating temperature range

from -4°F to +122°F in case