

Explorer Wall - Installation Instructions

Models EXPW-XX

Please read all instructions prior to installation and keep for future reference!

1. PRODUCT TO BE INSTALLED BY A QUALIFIED ELECTRICIAN.
2. PRIOR TO INSTALLATION ENSURE POWER IS OFF AT FUSE BOX TO PREVENT ELECTRICAL SHOCK.
3. FOR REMOTE DRIVER FIXTURES, USE ONLY WITH CLASS 2 POWER UNIT.
4. SUITABLE FOR DAMP LOCATIONS.
5. FIXTURE SHOULD BE INSTALLED BY TWO PEOPLE.
6. WALL MOUNT ONLY

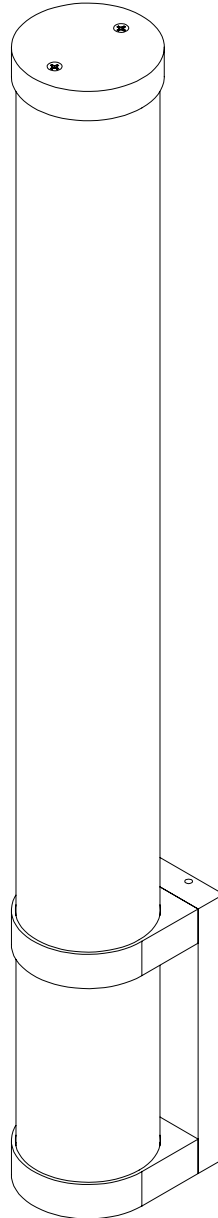


REVO.2
01272026

1 / 4



7777 Merrimac Ave
Niles, IL 60714
T 224.333.6033
F 224.757.7557
info@luminii.com
www.luminii.com



Explorer Wall - Installation Instructions

Models EXPW-XX



luminii

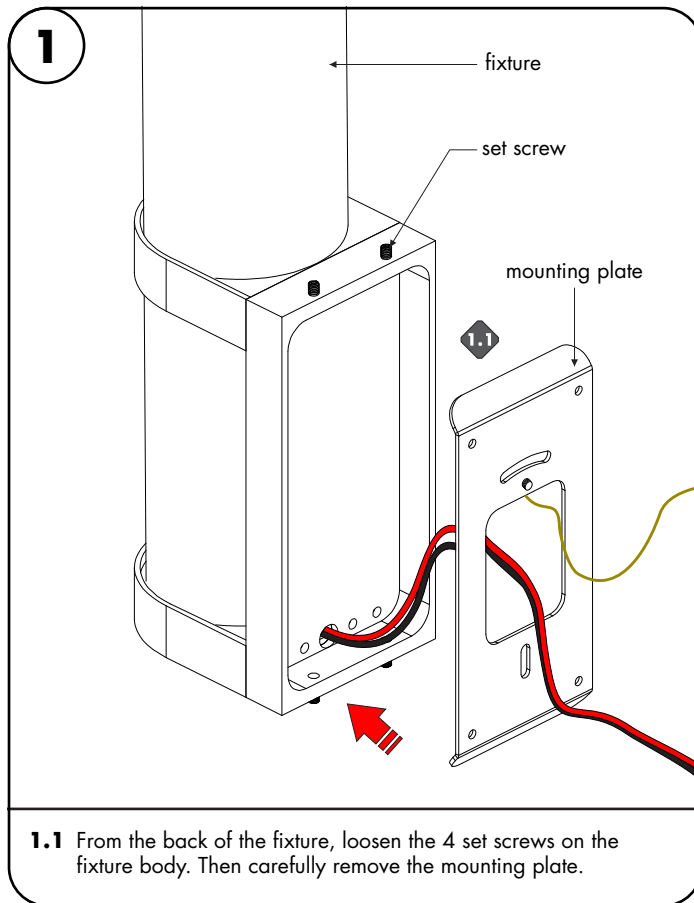
7777 Merrimac Ave
Niles, IL 60714
T 224.333.6033
F 224.757.7557
info@luminii.com
www.luminii.com

REV.0.2
01272026

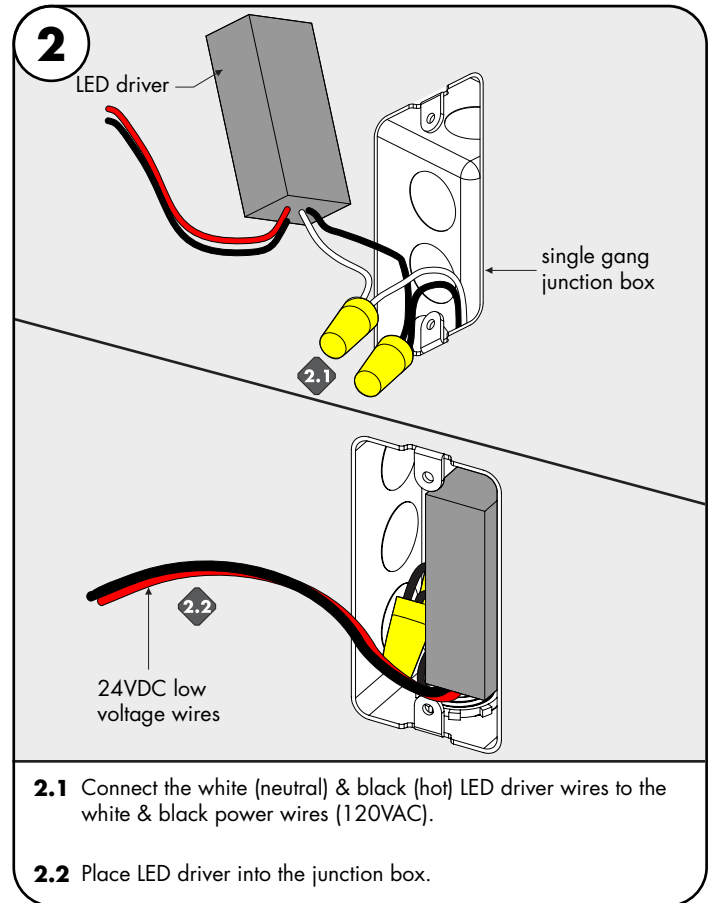
2 / 4

Please read all instructions prior to installation and keep for future reference!

1. PRODUCT TO BE INSTALLED BY A QUALIFIED ELECTRICIAN.
2. PRIOR TO INSTALLATION ENSURE POWER IS OFF AT FUSE BOX TO PREVENT ELECTRICAL SHOCK.
3. FOR REMOTE DRIVER FIXTURES, USE ONLY WITH CLASS 2 POWER UNIT.
4. SUITABLE FOR DAMP LOCATIONS.
5. FIXTURE SHOULD BE INSTALLED BY TWO PEOPLE.
6. WALL MOUNT ONLY

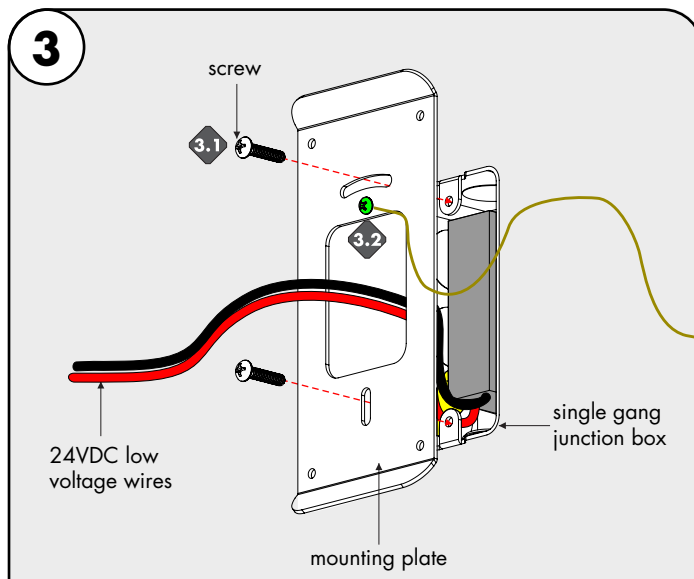


1.1 From the back of the fixture, loosen the 4 set screws on the fixture body. Then carefully remove the mounting plate.



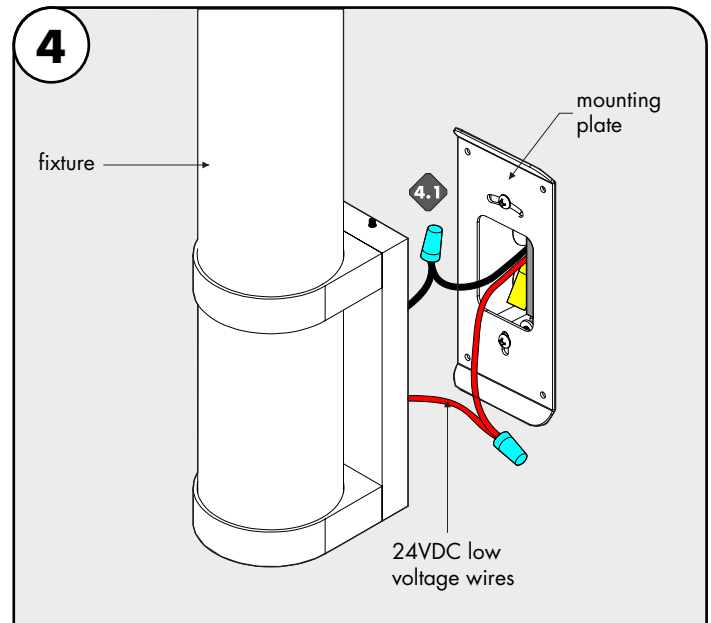
2.1 Connect the white (neutral) & black (hot) LED driver wires to the white & black power wires (120VAC).

2.2 Place LED driver into the junction box.



3.1 Feed the low voltage wires through the center of the mounting plate. Followed by lining up the mounting plate to the junction box and secure using the provided screws.

3.2 Connect the ground in accordance with local electrical codes.



4.1 Connect +24 VDC red wire from the fixture to the LED driver +24 VDC red wire with a wire nut. Connect -24VDC black wire from the fixture to LED driver -24VDC black wire with a wire nut.

Explorer Wall - Installation Instructions

Models EXPW-XX



7777 Merrimac Ave
Niles, IL 60714
T 224.333.6033
F 224.757.7557
info@luminii.com
www.luminii.com

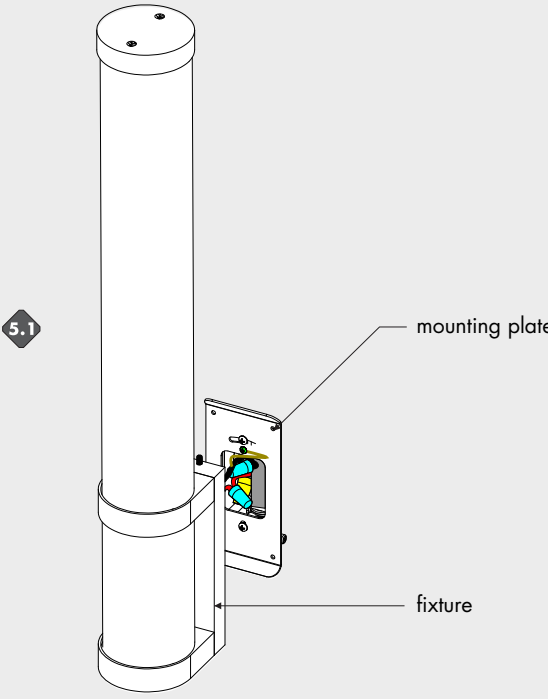
REVO.2
01272026

3 / 4

Please read all instructions prior to installation and keep for future reference!

1. PRODUCT TO BE INSTALLED BY A QUALIFIED ELECTRICIAN.
2. PRIOR TO INSTALLATION ENSURE POWER IS OFF AT FUSE BOX TO PREVENT ELECTRICAL SHOCK.
3. FOR REMOTE DRIVER FIXTURES, USE ONLY WITH CLASS 2 POWER UNIT.
4. SUITABLE FOR DAMP LOCATIONS.
5. FIXTURE SHOULD BE INSTALLED BY TWO PEOPLE.
6. WALL MOUNT ONLY

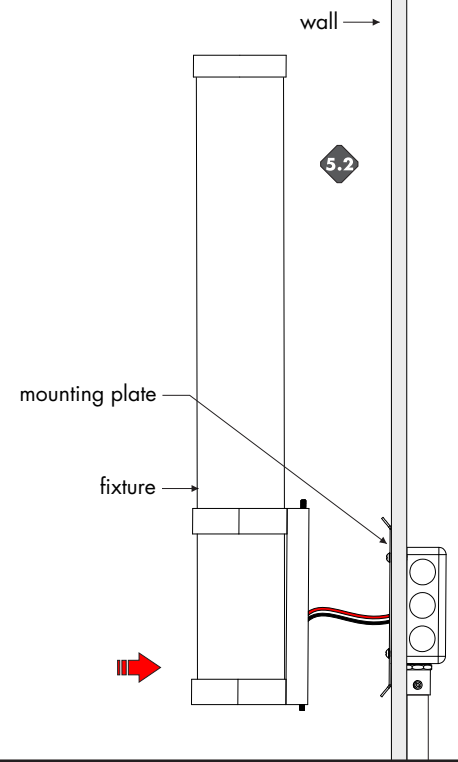
5



5.1

mounting plate

fixture



wall

5.2

mounting plate

fixture

5.1 Insert the fixture wire nut connections into the junction box.

5.2 Align the fixture to the mounting bracket & secure by using the fixture screws. Fixture can be mounted in a horizontal or vertical position.

Explorer Wall - Installation Instructions

Models EXPW-XX



7777 Merrimac Ave
Niles, IL 60714
T 224.333.6033
F 224.757.7557
info@luminii.com
www.luminii.com

REVO.2
01272026

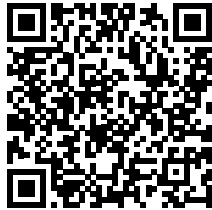
4 / 4

Please read all instructions prior to installation and keep for future reference!

1. PRODUCT TO BE INSTALLED BY A QUALIFIED ELECTRICIAN.
2. PRIOR TO INSTALLATION ENSURE POWER IS OFF AT FUSE BOX TO PREVENT ELECTRICAL SHOCK.
3. FOR REMOTE DRIVER FIXTURES, USE ONLY WITH CLASS 2 POWER UNIT.
4. SUITABLE FOR DAMP LOCATIONS.
5. FIXTURE SHOULD BE INSTALLED BY TWO PEOPLE.
6. WALL MOUNT ONLY

Power Supply Wiring Diagram

Note: Prior to installation all 24VDC wires must be present near fixture. Refer to the power supply installation instructions for additional information.



Static White
[Wiring Diagram PDF](#)