

Features

The CLA Channel is a linear aluminum extrusion that has been designed to fit many LED lighting needs. Multiple lens options allow for great flexibility and adaptability for any application. Extrusion and diffuser lenses are also field cuttable. Substantial aluminum mass in profile provides excellent heat sink for high power LEDs. Channels come with specified Mounting Clips and End Caps.

Finish

Silver anodized, White, Black, Bronze

Diffuser Lens

Polycarbonate, snap-in-place, UV resistant

Mounting

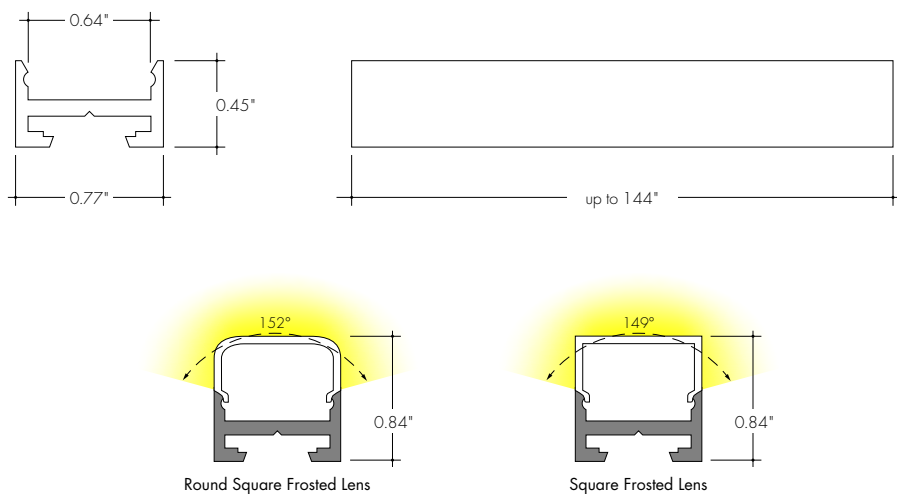
Multiple mounting brackets

Warranty

7 years



Product Dimensions



INCLUDED MOUNTING ACCESSORIES

EXTRUSION LENGTH	FIXED CLIP	SCREW-IN/MAGNETIC/ADJUSTABLE	END CAP PAIR
48"	48"	3	1
72"	72"	3	1
96"	96"	4	1
120"	120"	4	1
144"	144"	5	1

TRANSMISSION PERCENTAGE
(COMPARED TO LED TAPE WITHOUT CHANNEL)

LENS	TRANSMISSION %
Square Frosted	65%
Rounded Square Frosted	62%

See LED tape spec sheet for lens dotting characteristics & compatibility

Each pair of endcaps includes 1x H3 (no wire feed hole) and 1x H4 (with hole) where applicable. Additional endcaps and mounting clips are available for purchase.

Ordering code

MODEL	LENGTH	LENS	MOUNTING ²	FINISH ⁴
CLAC - CLA Channel ¹	48 - 48" 72 - 72" 96 - 96" ³ 120 - 120" ³ 144 - 144" ³	S - Square Frosted Q - Rounded Square Frosted	FC - Fixed Clip SC - Screw-In MAG - Magnetic A - Adjustable Hinge Mounting	BASE SA - Silver Anodized POWDER COATED BK - Black BZ - Bronze WH - White

1 - End Caps are included with channel, one of H3 (no hole) and one of H4 (with hole). Order additional End Caps as necessary.
2 - Mounting Clips are included with channel. Refer to chart above for provided mounting clip quantities. Order additional Mounting Clips as necessary.

3 - For Channels and Lenses over 96", incremental shipping charges will apply.
4 - Powder Coat finishes may have extended lead times. Custom RALs are available, please consult Inside Sales with specific request.

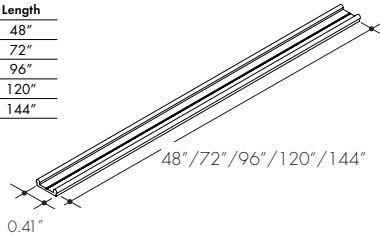
All Channels come with a specified set of Mounting Clips and End Caps, see Ordering Code for details. Order additional Mounting Clips and End Caps as necessary.

Mounting Clips

MC-BOSC-SNAP-XX

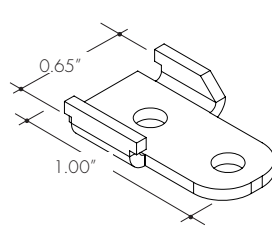
Fixed Clip available in 48", 72", 96", 120", 144"
-FC

XX	Length
48	48"
72	72"
96	96"
120	120"
144	144"



MB-BOSC-XX

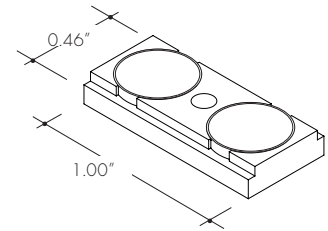
Fixed Clip available in 48", 72", 96", 120", 144"
-SC



XX	Color
SA	Silver Anodized
WH	White
BK	Black
BZ	Bronze

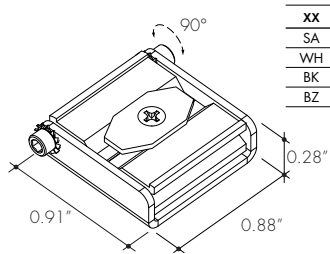
MB-BOSC-MAG

Magnetic bracket
-MAG



MB-BOSC-A-XX

Adjustable Mounting Bracket
-A

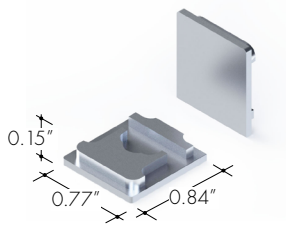


XX	Color
SA	Silver Anodized
WH	White
BK	Black
BZ	Bronze

End Caps

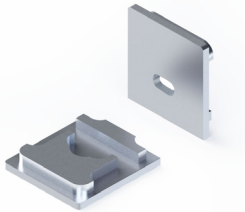
For Square Frosted Lens

EC-CLAC-S-H3-XX
End Cap



EC-CLAC-S-H4-XX

End Cap with Powerfeed Opening

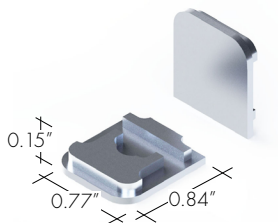


XX	Color
SA	Silver Anodized
WH	White
BK	Black
BZ	Bronze

End Caps

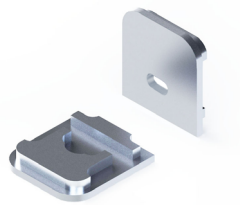
For Rounded Square Frosted Lens

EC-CLAC-Q-H3-XX
End Cap



EC-CLAC-Q-H4-XX

End Cap with Powerfeed Opening



XX	Color
SA	Silver Anodized
WH	White
BK	Black
BZ	Bronze

