



BA160-5MM-IP20/IP54-XX



## Features

BA160-5MM is a micro, high-performance LED strip designed for applications requiring exceptional colour quality and output from a compact form factor. It delivers 90+ CRI across the full output range, maintaining efficacy above 125 lm/W at 3000K.

With a density of 160 LEDs per metre and multiple lumen output options, the strip provides flexible performance from subtle accent levels through to outputs exceeding 1600 lm per metre. The 5 mm wide strip enables discreet integration into narrow channels and detail focused architectural lighting schemes. This product is available with IP20 or IP54 ratings.

### Mounting

LED strip is equipped with 3M™ adhesive tape.

### Applications

Indoor only - millwork, cove, architectural reveals, undercabinet, display case, handrail, accent lighting.

### Approvals

CE, UKCA, Class III

### Operating voltage

24 VDC

### Average Life (L70)

50,000 hours

### Warranty

5 years

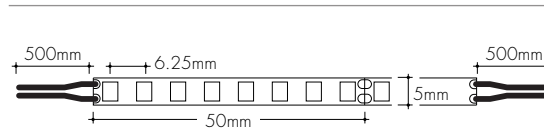


## Technical information

TYPE	BA160-5MM-IP20				BA160-5MM-IP54			
	VLO	LO	SO	MO	VLO	LO	SO	MO
Lumens Output (3000K)	315 lm/m	624 lm/m	1230 lm/m	1800 lm/m	309 lm/m	612 lm/m	1205 lm/m	1764 lm/m
Average Power Consumption	2.4 W/m	4.8 W/m	9.6 W/m	14.4 W/m	2.4 W/m	4.8 W/m	9.6 W/m	14.4 W/m
Efficacy	131 lm/W	130 lm/W	128 lm/W	125 lm/W	129 lm/W	127 lm/W	126 lm/W	123 lm/W
Cutting Increment	50.0 mm				50.0 mm			
Pitch Length	6.25 mm				6.25 mm			
Max Run Length (in series)	8 m	7 m	6 m	5 m	8 m	7 m	6 m	5 m
Dimensions	5 mm W x 2.3 mm H				5 mm W x 2.3 mm H			
Ambient Operating Temperature Range	-20°C - 40°C				-20°C - 40°C			

CCT	Multiplier (reference - 3000K)	CRI	TM-30		
			R <sub>f</sub>	R <sub>g</sub>	R <sub>9</sub>
2200K	0.82	92	91	98	53
2400K	0.87	92	90	99	51
2700K	0.97	92	91	97	50
3000K	1.00	92	90	100	52
3500K	1.03	92	90	100	56
4000K	1.05	92	89	100	56
5000K	1.02	93	91	99	71
6500K	0.97	92	92	98	67

IP20/IP54



## Ordering code

MODEL	OUTPUT	CCT	REEL SIZE
BA160-5MM-IP20 - Basics 5mm, IP20 BA160-5MM-IP54 - Basics 5mm, IP54	VLO - Very Low 2.4 W/m LO - Low 4.8 W/m SO - Standard 9.6 W/m MO - Medium 14.4 W/m	22K - 2200K 24K - 2400K 27K - 2700K 30K - 3000K 35K - 3500K 40K - 4000K 50K - 5000K 65K - 6500K	R5M - Reel, 5 metre



## Output

CCT	Multiplier	BA160-5MM-IP20				BA160-5MM-IP54			
		VLO (lm/m)	LO (lm/m)	SO (lm/m)	MO (lm/m)	VLO (lm/m)	LO (lm/m)	SO (lm/m)	MO (lm/m)
2200K	0.82	258	512	1009	1476	253	501	988	1446
2400K	0.87	274	543	1070	1566	269	532	1049	1535
2700K	0.97	306	605	1193	1746	299	593	1169	1711
3000K	1	315	624	1230	1800	309	612	1205	1764
3500K	1.03	324	643	1267	1854	318	630	1242	1817
4000K	1.05	331	655	1292	1890	324	642	1266	1852
5000K	1.02	321	636	1255	1836	315	624	1230	1799
6500K	0.97	306	605	1193	1746	299	593	1169	1711

## Lifetime and Environmental

At Luminii, we design our LED strip systems with longevity and responsible material use in mind. Our products are engineered to be serviceable and adaptable, with modular components such as drivers and controls that can be replaced or upgraded without full system replacement.

We are actively reducing the environmental impact of our packaging by transitioning to paper-based solutions for reels, bags, and outer packaging wherever possible, while minimising material use and avoiding mixed materials to improve recyclability.

We prioritise the use of recyclable materials in both our products and packaging, and encourage responsible disposal in line with local recycling and WEEE regulations.

<b>CIBSE TM65</b>	25.1 Kg/CO <sub>2</sub> e (5m complete reel)
<b>CIBSE TM66</b>	2.1
<b>RoHS Compliance</b>	Yes
<b>REACH Compliance</b>	Yes
<b>WEEE Compliance</b>	Yes - Registered Producer
<b>Declare</b>	-
<b>Lifetime</b>	L90B10 100,000hrs
<b>Warranty</b>	5 Years



# Basics Strip BA160-5MM

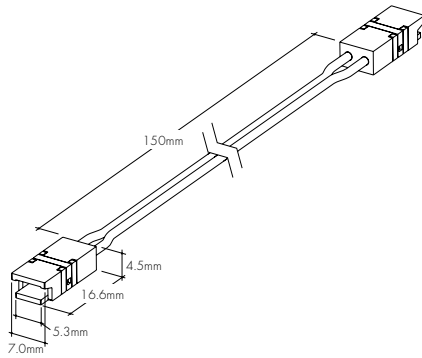
## Minii Connectors for IP20 and IP54

Minii connectors are easy, field-installable accessories that make joining LL strip simple! Their minimal width allows them to fit into extrusions, while their transparent frame eliminates dark spots.

**Note: verify internal extrusion dimensions to confirm compatibility**

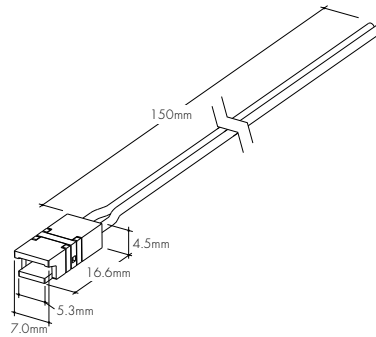
### LL-PJC-5

Jumper minii connector with 150mm wire for 5mm LED strip.



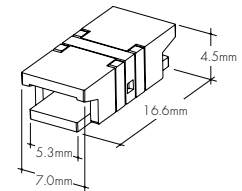
### LL-PFC-5-0.15M

Power feed minii connector with 150mm wire for 5mm LED strip.

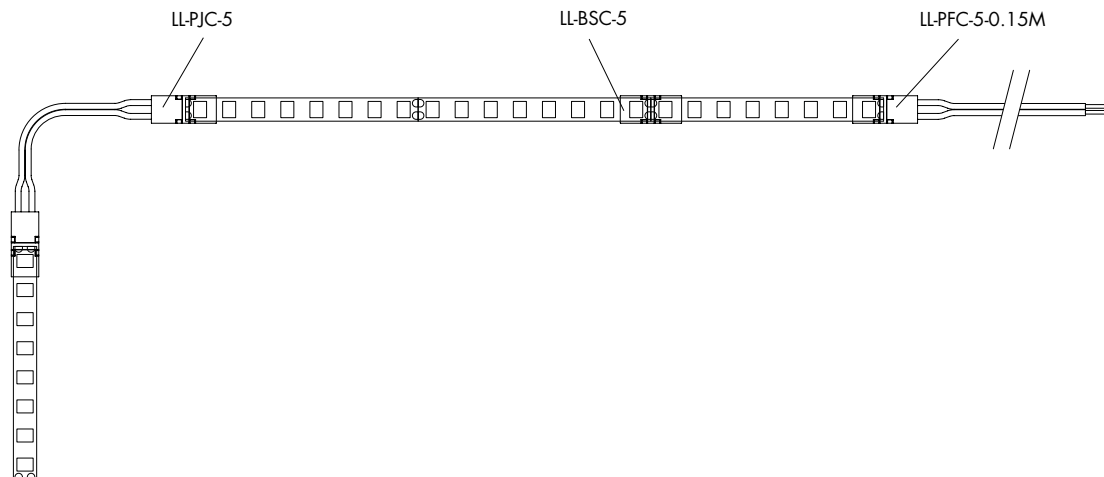


### LL-BSC-5

Butt splice minii connector for 5mm LED strip.

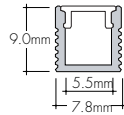
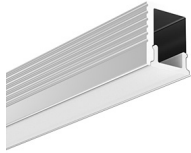


## Sample Layout



## Lens Options / Light Transmission

### JN CHANNEL -JN0809



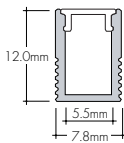
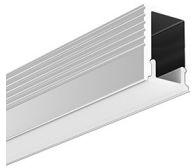
#### Ordering code

MODEL	LENGTH	LENS	MOUNTING <sup>1</sup>	FINISH
JN0809 - Surface Channel	2M - 2 metre	F - Frosted	FC - Fixed Clip VHB - 3M VHB	SA - Silver Anodized

<sup>1</sup> - Extrusion comes with 6 selected clips and 2 end caps.

Lens	Frosted Lens			
	100%	50%	10%	1%
Dimming Level	ND	ND	SD	SD
Dotting				
Transmission	48%			

### JN CHANNEL -JN0812



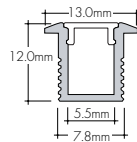
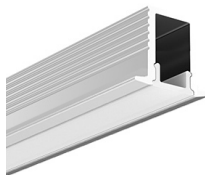
#### Ordering code

MODEL	LENGTH	LENS	MOUNTING <sup>1</sup>	FINISH
JN0812 - Tall Channel	2M - 2 metre	F - Frosted	FC - Fixed Clip VHB - 3M VHB	SA - Silver Anodized

<sup>1</sup> - Extrusion comes with 6 selected clips and 2 end caps.

Lens	Frosted Lens			
	100%	50%	10%	1%
Dimming Level	ND	ND	ND	ND
Dotting				
Transmission	37%			

### JN CHANNEL -JN1213



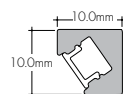
#### Ordering code

MODEL	LENGTH	LENS	MOUNTING <sup>1</sup>	FINISH
JN1213 - Recessed Channel	2M - 2 metre	F - Frosted	NA - No Clip VHB - 3M VHB	SA - Silver Anodized

<sup>1</sup> - Extrusion comes with 6 selected clips and 2 end caps.

Lens	Frosted Lens			
	100%	50%	10%	1%
Dimming Level	ND	ND	ND	ND
Dotting				
Transmission	37%			

### JN CHANNEL -JN45VC



#### Ordering code

MODEL	LENGTH	LENS	MOUNTING <sup>1</sup>	FINISH
JN45VC - Corner Channel	2M - 2 metre	F - Frosted	FC - Fixed Clip VHB - 3M VHB	SA - Silver Anodized

<sup>1</sup> - Extrusion comes with 6 selected clips and 2 end caps.

Lens	Frosted Lens			
	100%	50%	10%	1%
Dimming Level	ND	CD	CD	CD
Dotting				
Transmission	56%			

## Installation

All mounting channels are field cuttable using miter saw with circular blade suitable for cutting aluminum.

## Ordering

Extrusion are sold separately.

## Dotting

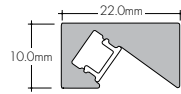


CD - Clear Dotting  
SD - Slight Dotting  
ND - No Dotting



## Lens Options / Light Transmission

### JNA CHANNEL -JNA



### Ordering code

MODEL	LENGTH	LENS	MOUNTING <sup>1</sup>	FINISH
JNA - Asymmetric Channel	2M - 2 metre	F - Frosted	CB - Concealed Bracket	SA - Silver Anodized

<sup>1</sup> - Extrusion comes with 6 selected clips and 2 end caps.

Lens	Frosted Lens			
	Dimming Level	100%	50%	10%
Dotting	SD	CD	CD	CD
Transmission	63%			

### Installation

All mounting channels are field cuttable using miter saw with circular blade suitable for cutting aluminum.

### Ordering

Extrusion are sold separately.

### Dotting



CD - Clear Dotting

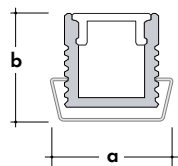
SD - Slight Dotting

ND - No Dotting



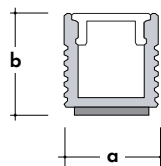
## Mounting for JN0809 & JN0812

**Fixed mounting clip  
-FC**



Model	a (mm)	b (mm)
JN0809	11.5	13.8
JN0812	11.5	10.8

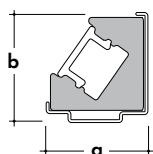
**VHB mounting  
-VHB**



Model	a (mm)	b (mm)
JN0809	7.8	10.0
JN0812	7.8	13.0

## Mounting for JN45VC

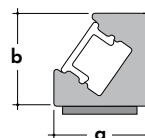
**Fixed mounting clip  
-FC**



Model	a (mm)	b (mm)
JN45VC	11.3	12.5

## Mounting for JN45VC

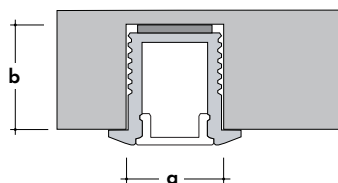
**VHB mounting  
-VHB**



Model	a (mm)	b (mm)
JN45VC	10.0	11.0

## Mounting for JN1213

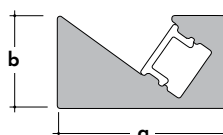
**VHB mounting  
-VHB**



Model	a (mm)	b (mm)
JN1213	7.8	13.0

## Mounting for JNA

**Concealed Bracket  
-CB**



Model	a (mm)	b (mm)
JNA	22.0	10.0



# Basics Strip BA160-5MM

## Power Supplies for UK, EU, Middle East, Asia and Pacific

### DALI 2 | Remote | Constant Voltage

Input Voltage	230V AC   50/60 Hz
Driver Type	Remote   Constant Voltage
Location	IP20   Indoor Location Only
Dimming Control	DALI 2
Min. Dim Level	0.1%
Flicker	IEEE 1789 Compatible   No Observable Effect



MODELS	40W	75W	150W	240W
Order Code	PSCV-40-24-D-EU	PSCV-75-24-D-EU	PSCV-150-24-D-EU	PSCV-240-24-D-EU
Length (mm)	185	295	295	360
Width (mm)	40	40	40	40
Depth (mm)	30	30	30	30

### 0-10V | Remote | Constant Voltage

Input Voltage	230V AC   50/60 Hz
Driver Type	Remote   Constant Voltage
Location	IP20   Indoor Location Only
Dimming Control	0-10V
Min. Dim Level	0.1%
Flicker	IEEE 1789 Compatible   No Observable Effect



MODELS	40W	75W	150W	240W
Order Code	PSCV-40-24-A-EU	PSCV-75-24-A-EU	PSCV-150-24-A-EU	PSCV-240-24-A-EU
Length (mm)	185	295	295	360
Width (mm)	40	40	40	40
Depth (mm)	30	30	30	30

### Max Series Run Length and Voltage Drop

The maximum series run length must not be exceeded. LED strips must be cut and re-fed from the power supply if the required length exceeds this. Maximum series run lengths can be found on page 1 and vary per output. Voltage drop must not exceed 3% between the PSU and start of the LED strip. Click or scan the QR code to visit our online voltage drop calculator.

