

Installation Instructions for Basics

BAXX-10MM-IP65

Please read all instructions prior to installation and keep for future reference!

1. Product should be installed by a qualified electrician.
2. Prior to installation ensure power is off at fuse box to prevent electrical shock.
3. Use only with Class 2 power unit. Utiliser seulement avec Classe 2 unite d'alimentation electrique.
4. Suitable for Damp Locations. Convient Aux Emplacements Humides.
5. For under-cabinet or shelf mount.
6. Conforms to UL STD 2108. Certified to CSA STD C22.2 No.250.0.



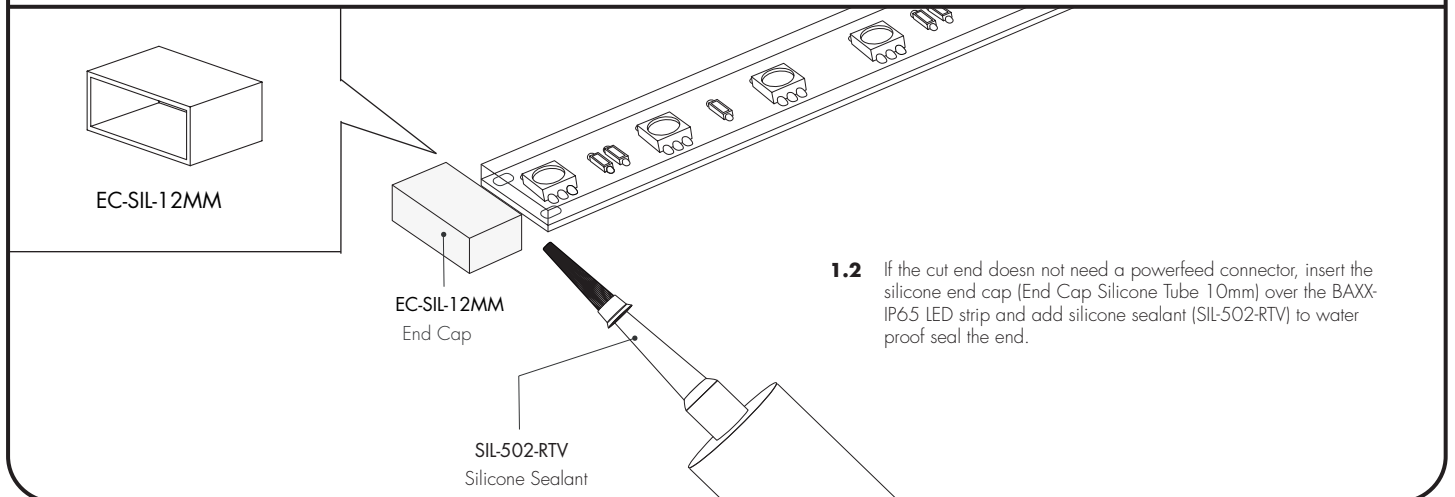
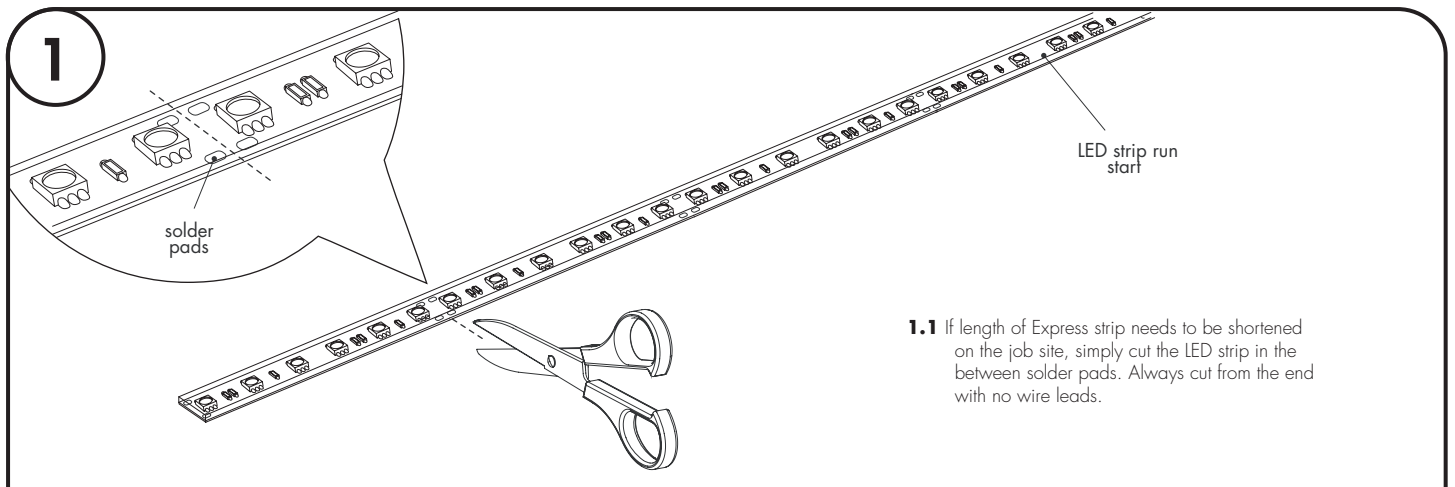
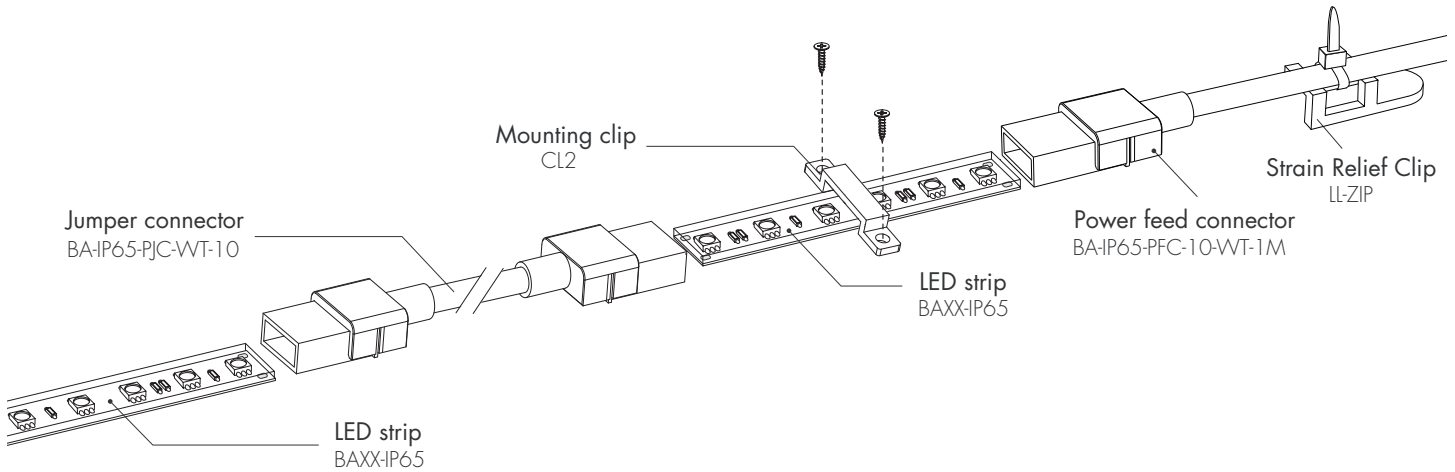
REVO.1
06252026

1 / 3

B basics
by luminii

7777 Merrimac Ave
Niles, IL 60714
T 224.333.6033
F 224.757.7557
info@luminii.com
www.luminii.com

Installation Directly to Mounting Surface using OAX Connectors



Installation Instructions for Basics

BAXX-10MM-IP65

Please read all instructions prior to installation and keep for future reference!

1. Product should be installed by a qualified electrician.
2. Prior to installation ensure power is off at fuse box to prevent electrical shock.
3. Use only with Class 2 power unit. Utiliser seulement avec Classe 2 unite d'alimentation électrique.
4. Suitable for Damp Locations. Convient Aux Emplacements Humides.
5. For under-cabinet or shelf mount.
6. Conforms to UL STD 2108. Certified to CSA STD C22.2 No.250.0.



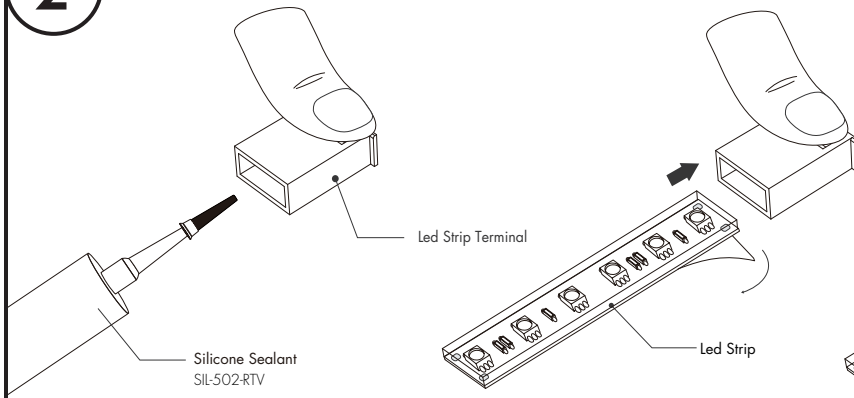
REVO.1
06252026

2 / 3

B basics
by luminii

7777 Merrimac Ave
Niles, IL 60714
T 224.333.6033
F 224.757.7557
info@luminii.com
www.luminii.com

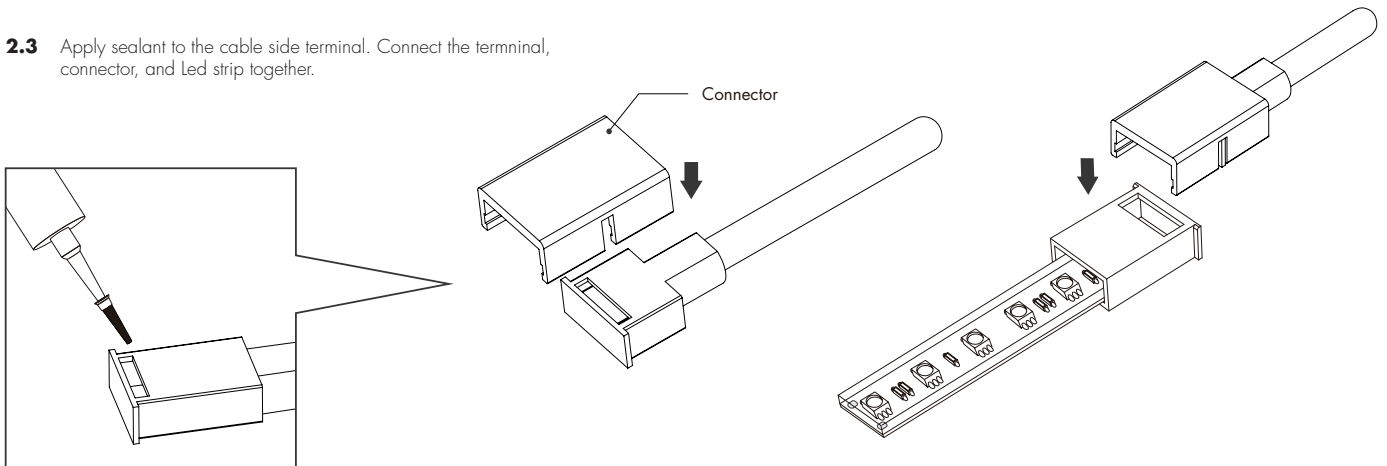
2



2.1 Cover the hole on the led strip side terminal with thumb, and fill the terminal with sealant.

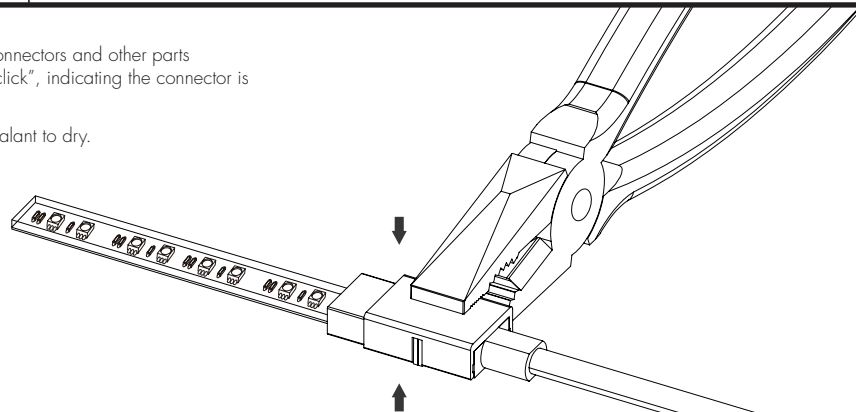
2.2 Insert the led strip, ensuring the sealant is evenly extruded through the gap. Remove excess sealant.

2.3 Apply sealant to the cable side terminal. Connect the terminal, connector, and Led strip together.



2.4 Use pliers to firmly press connectors and other parts together until you hear a "click", indicating the connector is securely locked in place.

2.5 Wait 30 minutes for the sealant to dry.



Installation Instructions for Basics

BAXX-10MM-IP65

Please read all instructions prior to installation and keep for future reference!

1. Product should be installed by a qualified electrician.
2. Prior to installation ensure power is off at fuse box to prevent electrical shock.
3. Use only with Class 2 power unit. Utiliser seulement avec Classe 2 unite d'alimentation electrique.
4. Suitable for Damp Locations. Convient Aux Emplacements Humides.
5. For under-cabinet or shelf mount.
6. Conforms to UL STD 2108. Certified to CSA STD C22.2 No.250.0.



REVO.1
06252026

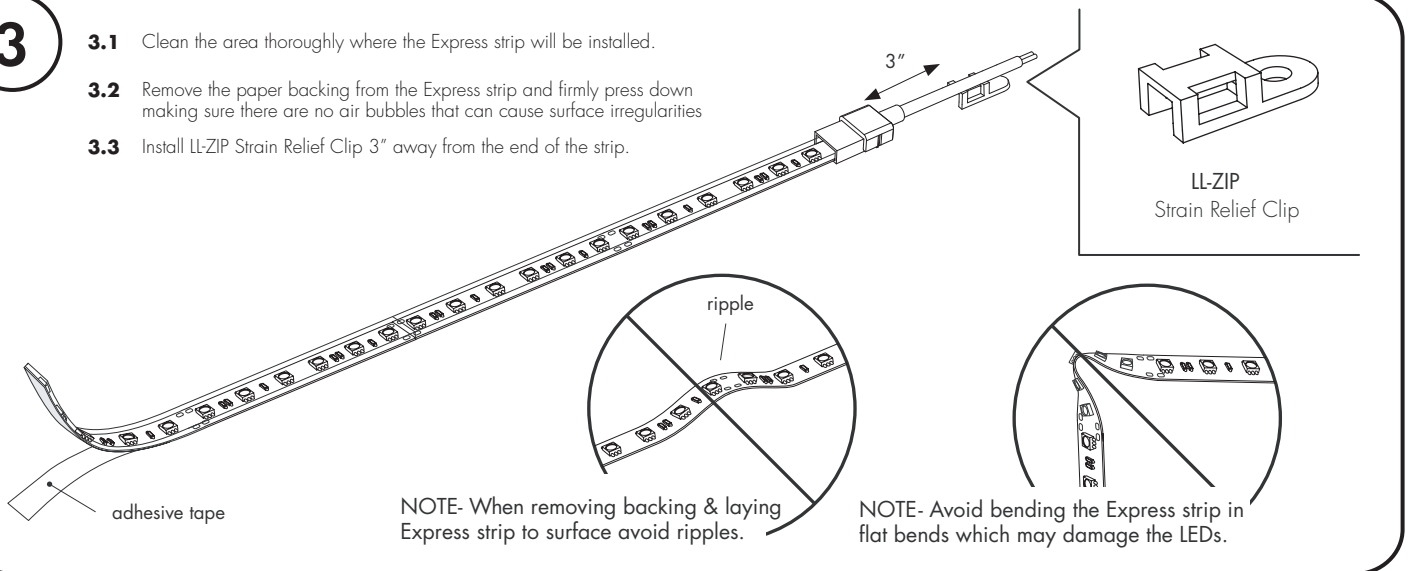
3 / 3

B basics
by luminii

7777 Merrimac Ave
Niles, IL 60714
T 224.333.6033
F 224.757.7557
info@luminii.com
www.luminii.com

3

- 3.1 Clean the area thoroughly where the Express strip will be installed.
- 3.2 Remove the paper backing from the Express strip and firmly press down making sure there are no air bubbles that can cause surface irregularities
- 3.3 Install LL-ZIP Strain Relief Clip 3" away from the end of the strip.



4

- 4.1 Place the strain relief in desired place. Make sure it is 3" away from the end of the strip.
- 4.2 Slide the zip tie through strain relief opening.
- 4.3 Lay wire lead on top of strain relief.
- 4.4 Tighten zip tie around lead wire. Cut off excess zip tie.

