



* MFG Model Number: BA42-XX



Features

BA140-IP20 series is a Contractor Grade, efficient, field configurable and durable LED strip light. It is suitable for use in coves, under cabinets, in shelves, millwork, and virtually anywhere a linear light is required.

Mounting

BA strip is equipped with 3M™ adhesive transfer tape.

Applications

Indoor only - millwork, cove, architectural reveals, undercabinet, display case, handrail, accent lighting.

Approvals

CE, UKCA, UL, Class 2

Operating voltage

24 VDC

Average Life (L70)

50,000 hours

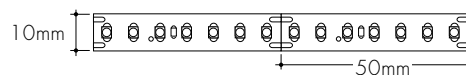
Warranty

5 years



Technical information

TYPE	BA140-IP20		
OUTPUT OPTIONS	SO	HO	VHO
Lumens Output (3000K)	643 lm/m	1224 lm/m	1768 lm/m
Average Power Consumption	6.6 W/m	13 W/m	19.7 W/m
Efficacy	98 lm/W	93 lm/W	90 lm/W
Cutting Increment (mm)	50 mm		
LED/Meter	140		
Max Run Length (in series to 96W)	15 m	8 m	5 m
Dimensions	10 mm W x 1.5 mm H		
Ambient Operating Temperature Range	-40° C - 40° C		



CCT	Multiplier (reference - 3000K)	CRI
2700K	0.90	90
3000K	1.00	90
3500K	1.03	90

Ordering code

MODEL	OUTPUT	CCT	REEL SIZE
BA140-IP20 - Basics Strip, Dry Location	SO - Standard HO - High VHO - Very High	27K - 2700K 30K - 3000K 35K - 3500K	R10m - Reel, 10 meter



Basics Strip BA140-IP20

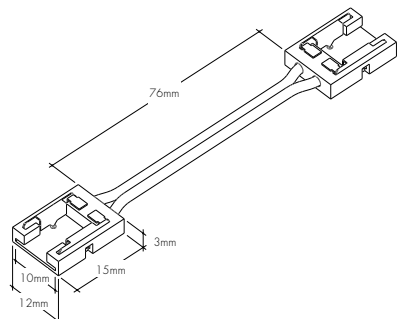
Minii Connectors

Minii connectors are easy, field-installable accessories that make joining LL strip simple! Their minimal width allows them to fit into extrusions, while their transparent frame eliminates dark spots.

Note: verify internal extrusion dimensions to confirm compatibility

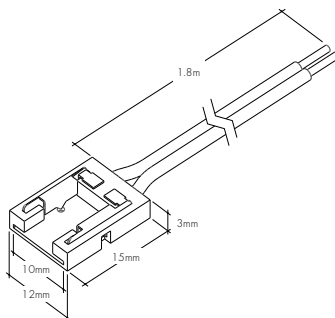
LL-PJC-10

Jumper minii connector with 76mm wire for BA140-IP20 LED strip



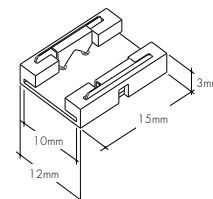
LL-PFC-10-1.8M

Power feed minii connector with 1.8m wire for BA140-IP20 LED strip

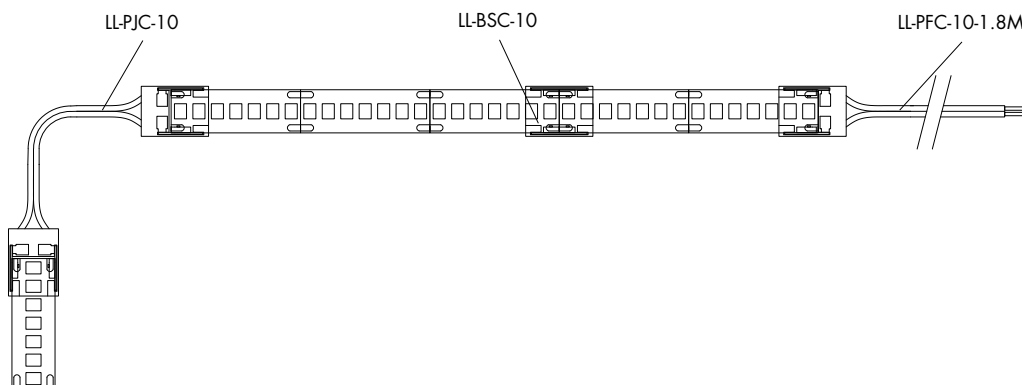


LL-BSC-10

Butt splice minii connector for BA140-IP20 LED strip



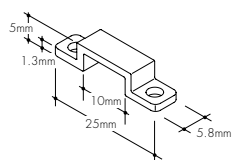
Sample Layout



Accessories

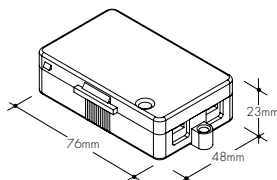
CL1

Mounting clip



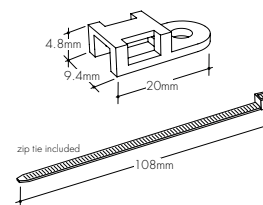
LVSP-IP20-4T-BK

Low Voltage, 4 Terminal Splice Box, Black



LL-ZIP

Cable/Wire Strain Relief Clip



Recommended every 300mm when LineLED strip is facing down



Lens Options / Light Transmission



Clear



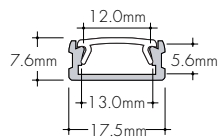
Half (50%)
Frosted



Frosted



KS Channel (KSC-XX)



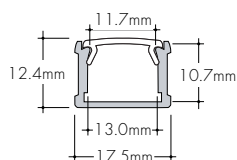
Ordering code

MODEL	LENGTH	LENS	MOUNTING ¹	FINISH
KSC-KS Channel	2M-2 meter	C-Clear HF-Half Frosted F-Frosted	FC-Fixed Clip FC45-Fixed Clip 45°	SA-Silver Anodized

1 - Extrusion comes with 4 selected clips and 2 end caps.



KM Channel (KMC-XX)



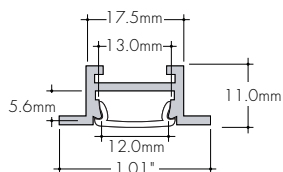
Ordering code

MODEL	LENGTH	LENS	MOUNTING ¹	FINISH
KMC-KM Channel	2M-2 meter	C-Clear HF-Half Frosted F-Frosted	FC-Fixed Clip FC45-Fixed Clip 45°	SA-Silver Anodized

1 - Extrusion comes with 4 selected clips and 2 end caps.



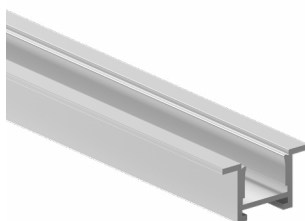
KRS Channel (KRSC-XX)



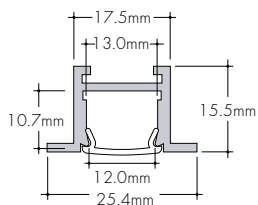
Ordering code

MODEL	LENGTH	LENS	MOUNTING ¹	FINISH
KRSC-KRS Channel	2M-2 meter	C-Clear HF-Half Frosted F-Frosted	HS-Hard Surface Mounting Bracket GS-Gypsum Surface Mounting Bracket	SA-Silver Anodized

1 - Extrusion comes with 4 selected clips and 2 end caps.



KRM Channel (KRMC-XX)



Ordering code

MODEL	LENGTH	LENS	MOUNTING ¹	FINISH
KRMC-KRM Channel	2M-2 meter	C-Clear HF-Half Frosted F-Frosted	HS-Hard Surface Mounting Bracket GS-Gypsum Surface Mounting Bracket	SA-Silver Anodized

1 - Extrusion comes with 4 selected clips and 2 end caps.

Installation

All mounting channels are field cuttable using miter saw with circular blade suitable for cutting aluminum.

Ordering

Extrusion are sold separately.

Led Dotting per Extrusion with BA140-IP20

different output options may slightly vary

Extrusion	Clear Lens	Half-Frosted Lens	Frosted Lens
KSC	CD	CD	CD
KMC	CD	SD	ND
KRSC	CD	CD	SD
KRMC	CD	CD	ND



CD - Clear Dotting
SD - Slight Dotting
ND - No Dotting



Lens Options / Light Transmission



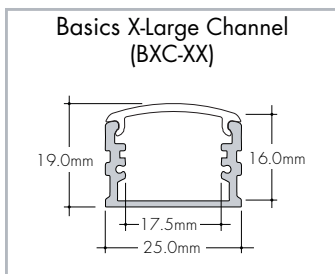
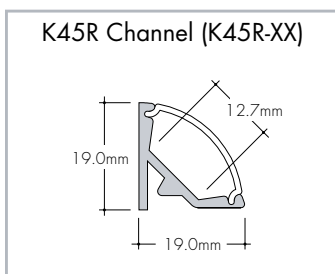
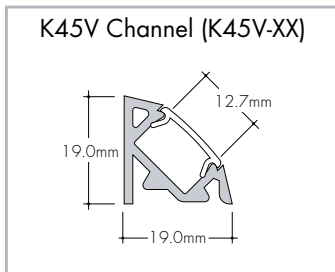
Clear



Half (50%)
Frosted



Frosted



Ordering code

MODEL	LENGTH	LENS	MOUNTING ¹	FINISH
K45VC - K45V Channel	2M - 2 meter	C - Clear HF - Half Frosted F - Frosted	CB - Concealed Bracket	SA - Silver Anodized

1 - Extrusion comes with 4 selected clips and 2 end caps.

Ordering code

MODEL	LENGTH	LENS	MOUNTING ¹	FINISH
K45RC - K45R Channel	2M - 2 meter	C - Clear HF - Half Frosted F - Frosted	CB - Concealed Bracket	SA - Silver Anodized

1 - Extrusion comes with 4 selected clips and 2 end caps.

Ordering code

MODEL	LENGTH	LENS	MOUNTING ¹	FINISH
BXC - Basics X-Large Channel	2M - 2 meter	F - Frosted	FC - Fixed Clip	SA - Silver Anodized

1 - Extrusion comes with 4 selected clips and 2 end caps.

Installation

All mounting channels are field cuttable using miter saw with circular blade suitable for cutting aluminum.

Ordering

Extrusion are sold separately.

Led Dotting per Extrusion with BA140-IP20

different output options may slightly vary

Extrusion	Clear Lens	Half-Frosted Lens	Frosted Lens
K45VC	CD	CD	ND
K45RC	CD	ND	ND
BXC	-	-	ND



CD - Clear Dotting
SD - Slight Dotting
ND - No Dotting

