

## Features

Basics by Luminii Contractor-Grade corner 45° extrusions compatible with Basics by Luminii LED strips.

### Finish

Silver anodized Channel, White plastic End Caps

### Diffuser Lens

Polycarbonate, snap-in-place, UV resistant

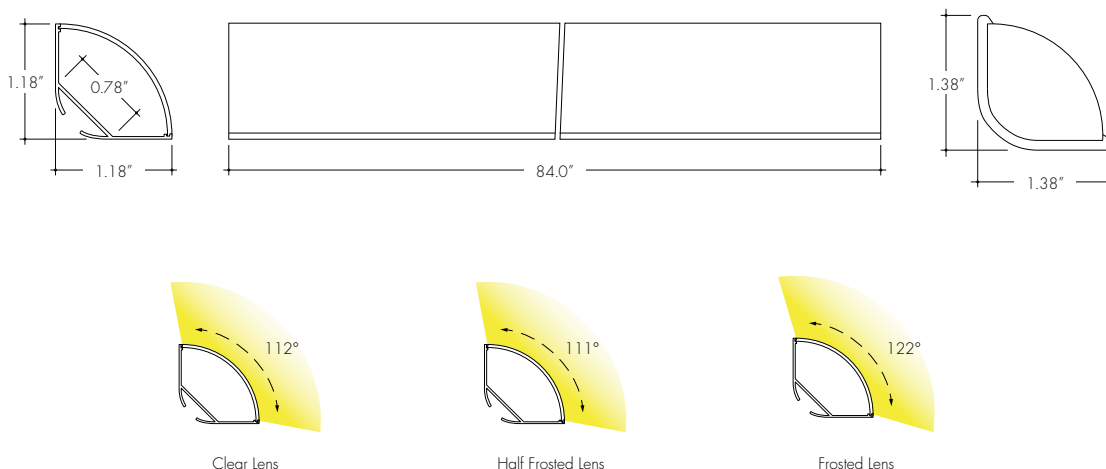
### Mounting

Fixed Clip Mounting Bracket

### Warranty

5 Years

## Product Dimensions



### INCLUDED MOUNTING ACCESSORIES

EXTRUSION LENGTH	MOUNTING HARDWARE	END CAP (PAIR)
84"	6	1

Each pair of endcaps includes 1x H0 (no wire feed hole) and 1x H1 (with hole) where applicable. Additional endcaps and mounting clips are available for purchase.

### TRANSMISSION PERCENTAGE (COMPARED TO LED TAPE WITHOUT CHANNEL)

LENS	TRANSMISSION %
Clear	93%
Half Frosted	85%
Frosted	73%

See LED tape spec sheet for lens dotting characteristics & compatibility  
Use complete Dotting Chart Tool online for more dotting information ([Link](#))

## Ordering code

MODEL	LENGTH	LENS	MOUNTING <sup>2</sup>	FINISH
B45RC - Basics Corner Round Channel <sup>1</sup>	84 - 84"	C - Clear HF - Half Frosted F - Frosted	FC45 - Fixed Clip 45°	SA - Silver Anodized

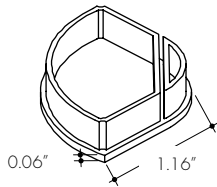
<sup>1</sup> - End Caps are included with channel, one of H0 (no hole) and one of H1 (with hole). Order additional End Caps as necessary.

<sup>2</sup> - Mounting Clips are included with channel. Refer to chart above for provided mounting clip quantities. Order additional Mounting Clips as necessary.

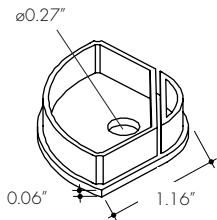
Accessories

All Channels come with a specified set of Mounting Clips and End Caps, see Ordering Code for details. Order additional Mounting Clips and End Caps as necessary.

**EC-B45RC-H0-WH**  
Plastic End Cap



**EC-B45RC-H1-WH**  
Plastic End Cap with Powerfeed Opening



**MB-B45RC-WH**  
Fixed Clip 45°  
**-FC45**

