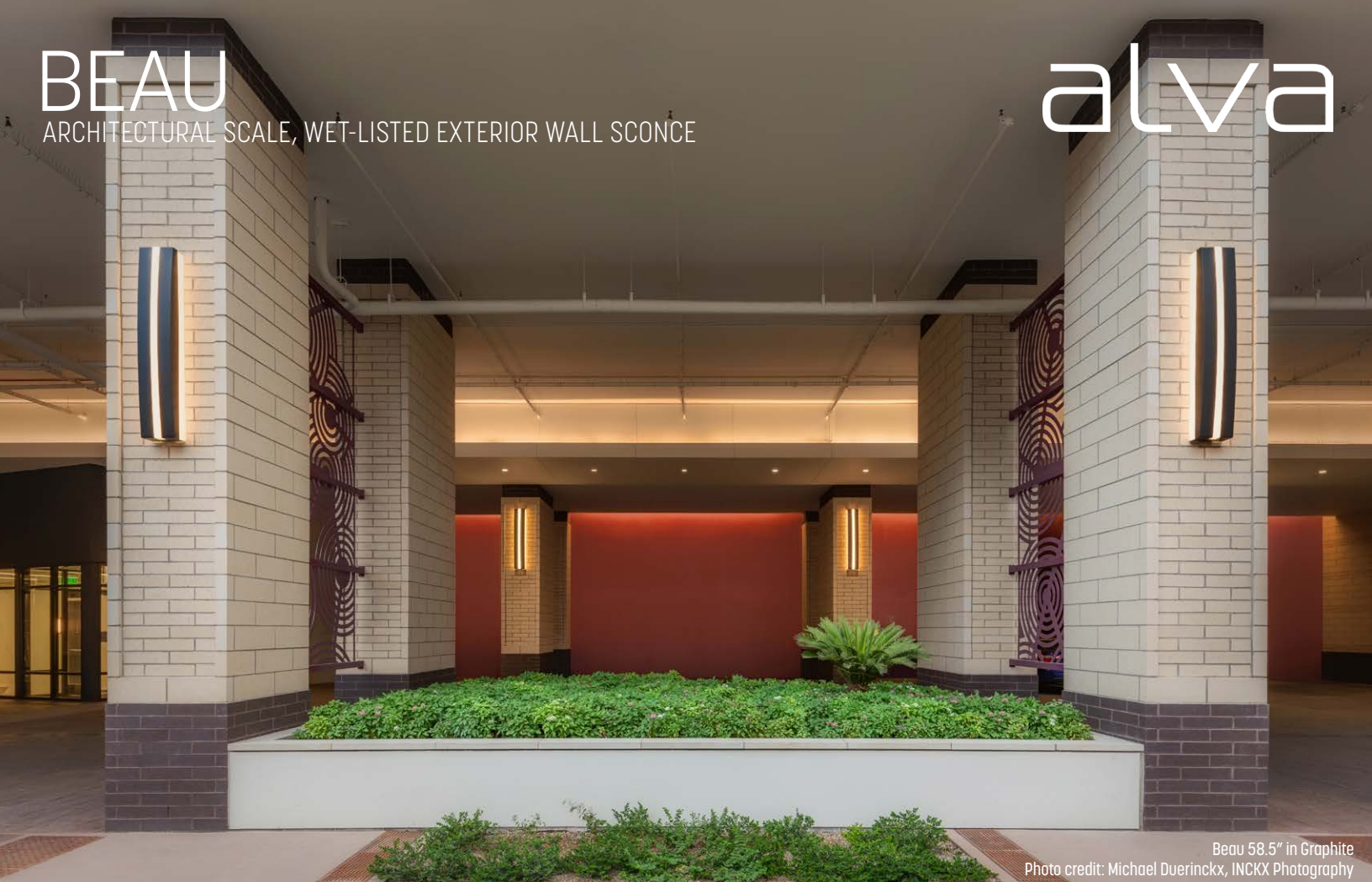


BEAU

ARCHITECTURAL SCALE, WET-LISTED EXTERIOR WALL SCONCE

alva



Beau 58.5" in Graphite

Photo credit: Michael Duerinckx, INCKX Photography



Beau 28"

APPLICATIONS

Direct/indirect grazing luminaire for exterior applications: flanking doors, lobby entrances or between windows. Suitable for marine environments.

SIZES

- 28.5" L x 7" W x 5.25" D, 18 lb
- 58.5" L x 10" W x 6.5" D, 36 lb

MOUNTING

- J-Box 3.0 or 4.0 at center or end of fixture
- Steel mounting system with mounting plate and cover with rubber gaskets between the junction box and mounting plate
- Can be mounted vertically or horizontally

SPECIFICATIONS

- IP66 Rated May be Power Washed at High Pressure (100kPa at distance of 3m)
- 120-277V input
- Title 24 Compliant
- 100,000+ hours rated life time
- 10 Year Limited Warranty (excludes shade)

LAMPING

- High efficiency, fully integrated proprietary LED module
- 80 CRI minimum, 85 CRI typical
- 3000K, 3500K, 4000K standard
- (23W) 2300 LM for 28.5" light module
- (37W) 3700 LM for 58.5" light module
- 0-10V Dimming (100-10%)

CONSTRUCTION

Fixture shell (shade): Stamped steel with industrial powder coat and high impact acrylic

TITLE
24

10YR
WARRANTY



BEAU

ARCHITECTURAL SCALE, WET-LISTED EXTERIOR WALL SCONCE

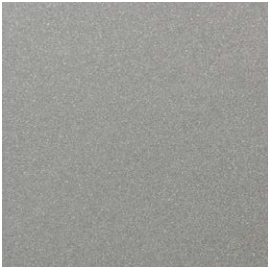
alva



Beau 58.5" in Graphite

Photo credit: Michael Duerinckx, INCKX Photography

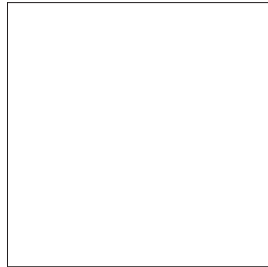
METAL POWDER COAT FINISH OPTIONS



ESN - Enviro Satin Nickel



EOB - Enviro Oil-Rubbed Bronze



WHT - White



BLK - Black

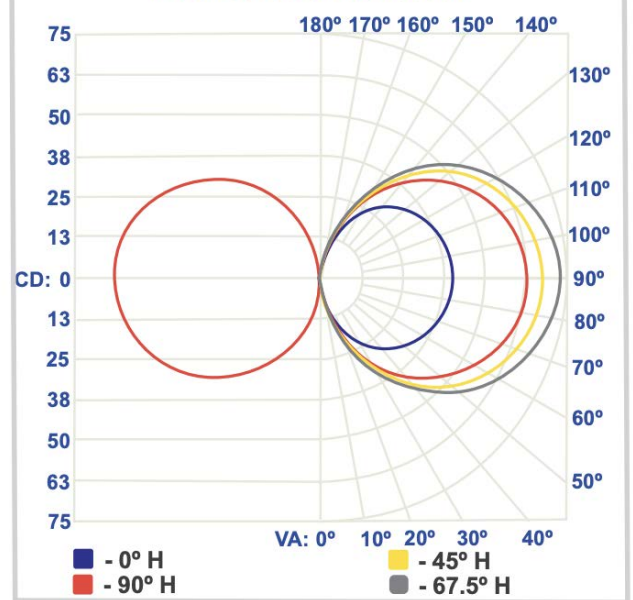


GR - Graphite



DB - Dark Bronze

Polar Candela Distribution



ORDER CODE:

Beau			
------	--	--	--

MODEL

Beau

LENGTH

28 28.5"
58 58.5"

METAL TRIM

POWDER COAT FINISH OPTIONS

ESN Enviro Satin Nickel
EOB Enviro Oil-Rubbed Bronze
GR Graphite
DB Dark Bronze
WHT White
BLK Black

CCT

3000 3000K
3500 3500K
4000 4000K