

Indira Curve & Rectangle



Left: Curved Sconce, Up & Down Light, Graphite Finish
Right: 10" Panel, Up & Down Light with Optional Door Number Plaque

APPLICATIONS

- Multi-Family Residential / Condominiums, Retail, Corporate, Senior Living, Healthcare, Education

SHADE DIMENSIONS

- Round or Rectangular Shade: 4.5"W x 10"H x 3" projection
- Optional panel comes in four standard lengths: 5", 10", 15", 20"

DIMMING

- TRIAC/ELV Dimming

MOUNTING

- Flexible mounting system with universal crossbar and threaded pipe. Refer to installation guide for more details
- Mounts to center of J-box at 5.5" from top of shade

SPECIFICATIONS

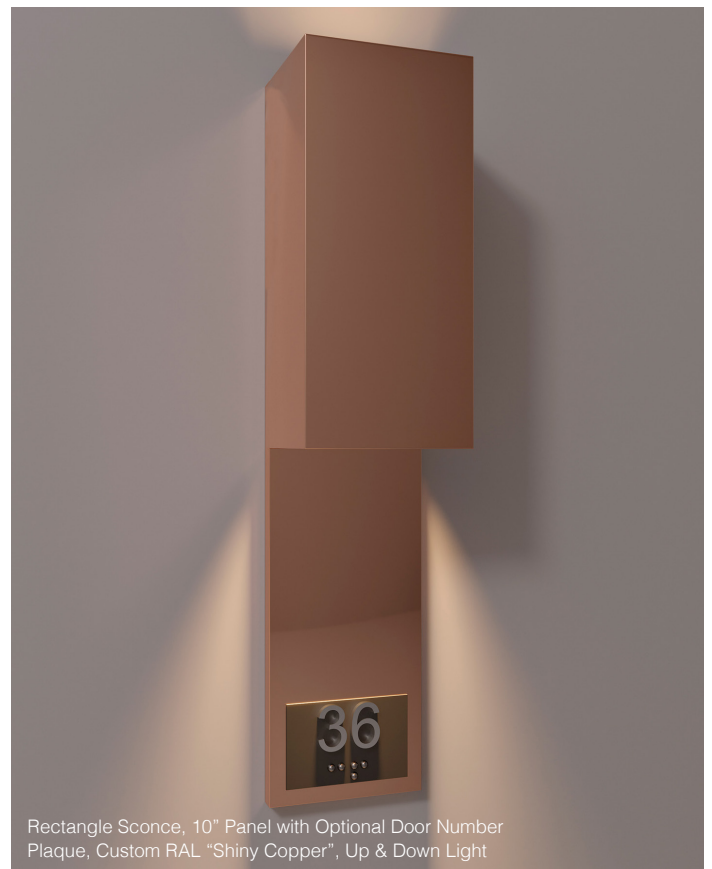
- Title 24 JA8 Compliant
- UL Damp or Wet Listed (must specify)
- ADA Compliant
- Made in the USA, BABA compliant

LAMPING

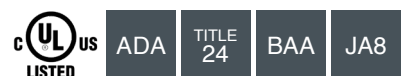
- Field Replaceable LED Module
- 10W/12W
- 90 CRI
- Select from 2200K, 2700K, 3000K, 3500K, or 4000K CCT
- L70 100,000+ Hours
- 100+ LPW
- 120 or Universal Voltage (120-277)

CONSTRUCTION

- Shade is manufactured with aluminum and finished in an architectural-grade powder coat



Rectangle Sconce, 10" Panel with Optional Door Number Plaque, Custom RAL "Shiny Copper", Up & Down Light



Indira Curve & Rectangle

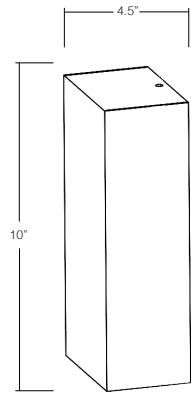


Left: Curved Sconce, Up & Down Light, Graphite Finish
 Right: 10" Panel, Up & Down Light with Optional Door Number Plaque

RECTANGLE SCONCE, RE4W10H:



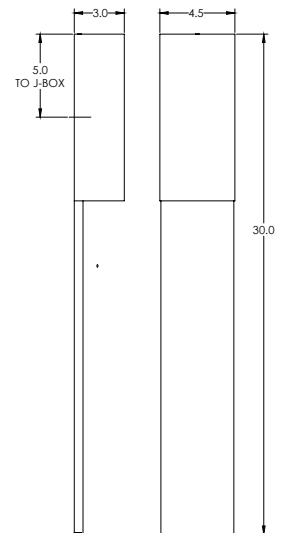
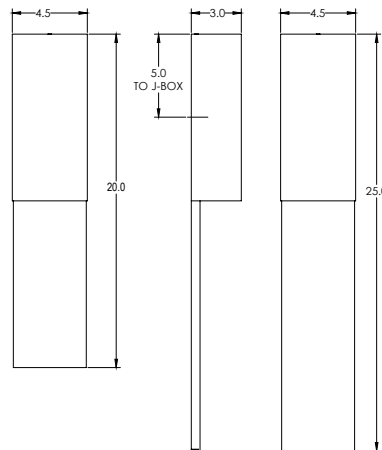
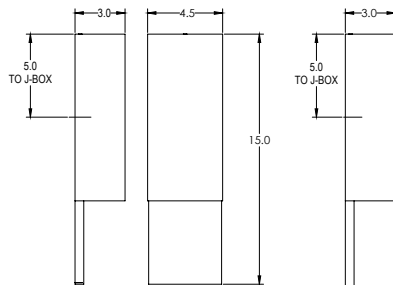
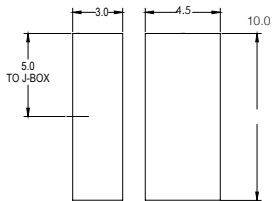
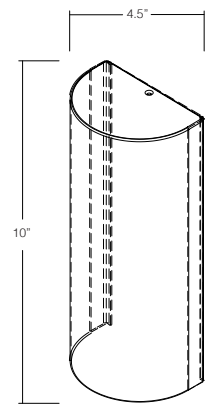
Down Light Only, Black Finish



CURVED SCONCE, CU4W10H:



Up & Down Light, Graphite Finish



Indira Curve & Rectangle

alva®

SHADE LIGHT OPTIONS:



Down Light Only, MT1



Up and Down Light, MT2

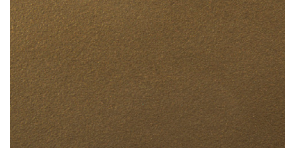
METAL POWDER COAT FINISH OPTIONS:



Enviro Satin Nickel, ESN



Graphite, GR



Enviro Oil-Rubbed Bronze, EOB



Dark Bronze, DB



Matte Black, BLK



Matte White, WHT

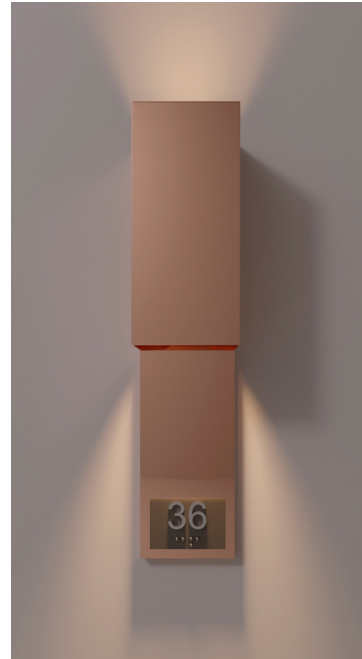
PANEL LENGTH OPTIONS:



PN20, Enviro Oil-Rubbed Bronze



PN15, Enviro Satin Nickel



PN10, Custom RAL "Shiny Copper"



PN5, Matte White

ORDER CODE:

BRAND	LED MODULE	CCT	CRI	INPUT VOLTAGE	SHADE SHAPE	SHADE LIGHT	PANEL LENGTH (OPTIONAL)	POWDER COAT FINISH	DOOR PANEL PLAQUE (OPTIONAL MUST SPECIFY)	WET
AU	C10W		9							
	2200 2200K			120 120 Volts	RE4W10H Rectangle Shade	MT1 Down Light Only	PN5 Extends 5" below fixture	ESN Enviro Satin Nickel	DPP Door Panel Plaque	WET Wet Listed
	2700 2700K			UNV Universal	CU4W10H Curved Shade	MT2 Down/Up Light	PN10 Extends 10" below fixture	EOB Enviro Oil-Rubbed Bronze		
	3000 3000K						PN15 Extends 15" below fixture	GR Graphite		
	3500 3500K						PN20 Extends 20" below fixture	DBT Dark Bronze		
	4000 4000K							WHT White		
								BLK Black		
								CP Custom RAL Finish		