

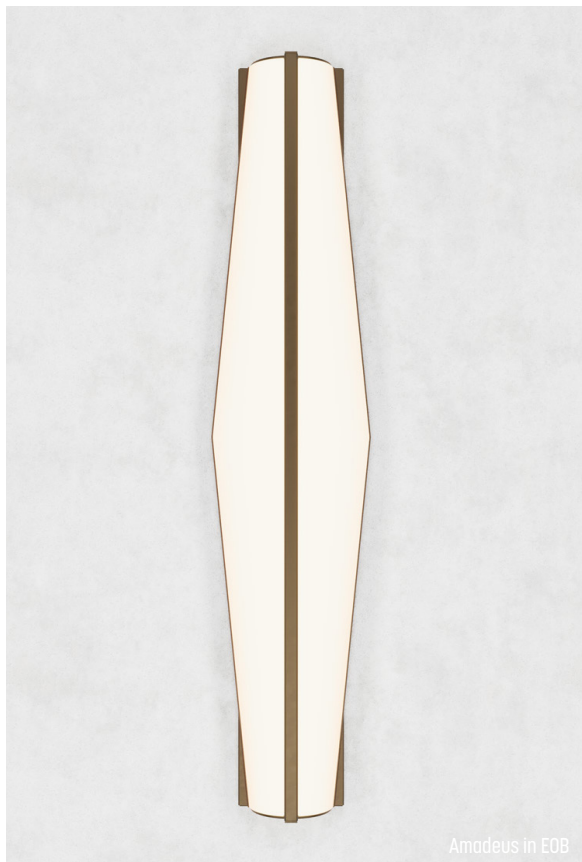
AMADEUS

ARCHITECTURAL SCALE, WET-LISTED EXTERIOR WALL SCONCE

alva®



Amadeus in EOB



Amadeus in EOB

APPLICATIONS

Contract grade, modern, direct/indirect ambient luminaire for exterior applications: flanking doors, lobby entrances or between windows. Suitable for marine environments.

SIZES

- 47.5"H x 9"W x 3.9" Deep, 12 lbs

MOUNTING

- Metal bracket(s) mounted to exterior surface. Junction box can be anywhere behind the fixture allowing for flexible mounting.
- Vertical mounting

SPECIFICATIONS

- UL Wet Listed
- 120V input
- ADA Compliant
- BABA

LAMPING

- High-efficiency integrated LED module. Field replaceable
- 90+ CRI
- Wattage: 20W
- Delivered Lumens: 1050 LM
- Available Color Temperatures:
 - 2700K (warm)
 - 3000K (warm/neutral)
 - 3500K (neutral/cool)
 - 4000K (cool)
- Dimming: ELV/Triac 100 to 10%.

CONSTRUCTION

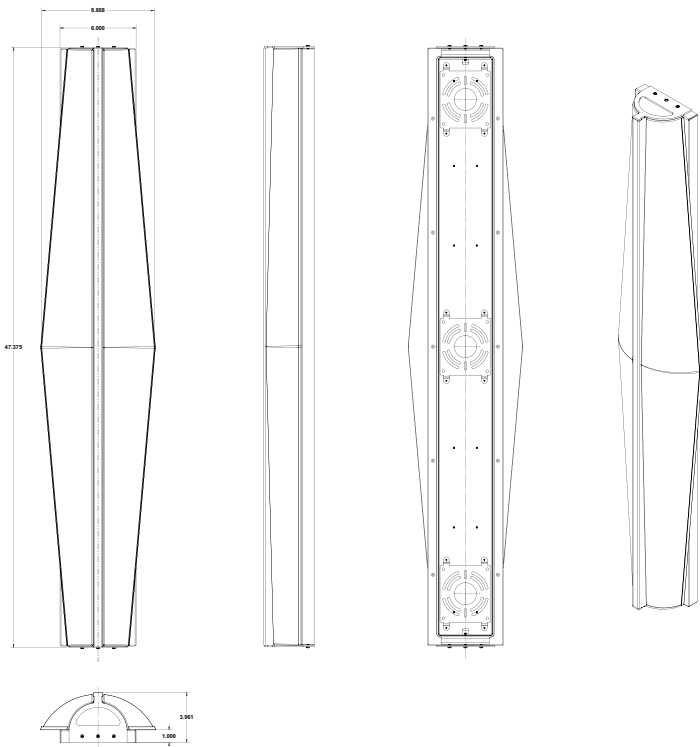
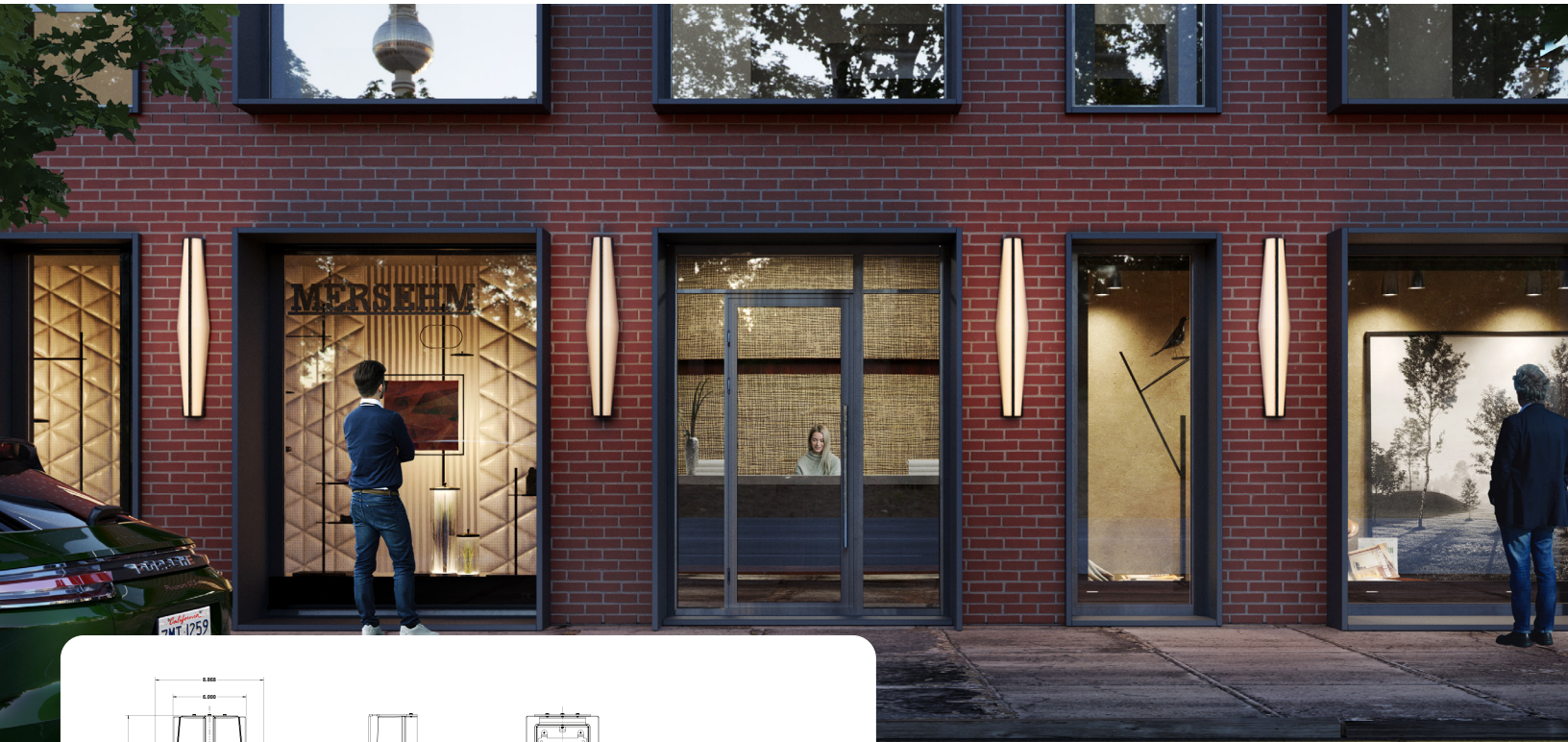
Fabricated in our California factory out of marine-grade aluminum with an industrial powder coat finish. Impact resistant F1 rated white acrylic lens.



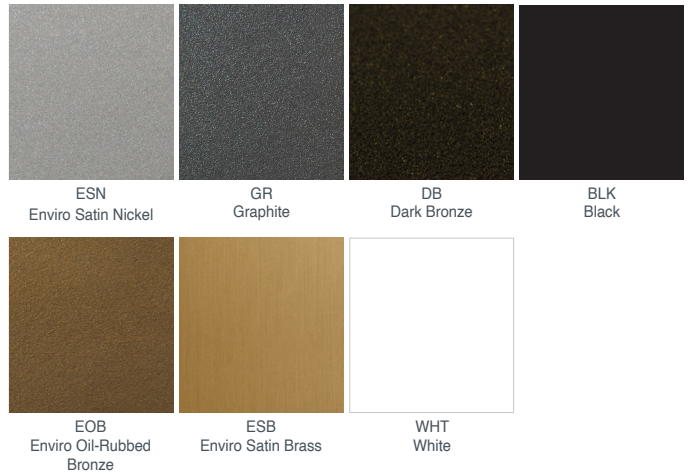
AMADEUS

ARCHITECTURAL SCALE, WET-LISTED EXTERIOR WALL SCONCE

alva®



METAL POWDER COAT FINISH OPTIONS



ORDER CODE:

AMADEUS	48		
MODEL	LENGTH	METAL TRIM	CCT

Amadeus

48 48"

POWDER COAT FINISH OPTIONS

ESN	Enviro Satin Nickel	2700	2700K (warm)
ESB	Enviro Satin Brass	3000	3000K (warm/neutral)
EOB	Enviro Oil-Rubbed Bronze	3500	3500K (neutral/cool)
GR	Graphite	4000	4000K (cool)
DB	Dark Bronze		
WHT	White		
BLK	Black		