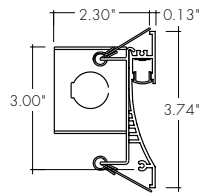




**Features**

- 24VDC Class 2 fixtures made to order up to 120".
- Approved for closet/storage space installation per NEC 410.16(A)(3) and 410.16(C)(5) on outputs 5.7 W/ft or less
- Class two listed for damp locations.
- Proprietary strong bond solder method handles up to 50 lbs of pull force on wire leads and connectors.
- RGB offers balanced output across the color gamut and a true white with RGBW
- Smart Pixel allows for infinite color combinations with cascading and chasing effects
- Average Life (L70): 50,000hrs
- 7 year warranty



**Finish Options** (see page 2 for additional information)

- Base  Silver Anodized
- 
- Powder Coat  Black  Bronze  White
- 
- Premium  Matte Black  Warm Nickel  Aged Brass  
 Polished Gold  Chrome



**Technical Information**

TYPE	RGBW		RGB		Pixel	
	RGBW36SO	RGBW36HO	RGB42SO	RGB42HO	RGBWX18SO	RGBX18SO
<b>OUTPUT OPTIONS</b>						
Lumens Output (all channels full on) (with a Frosted Lens)	137 lm/ft	227 lm/ft	136 lm/ft	200 lm/ft	166 lm/ft	109 lm/ft
Average Power Consumption (for a 4" section)	4 W/ft	7.6 W/ft	4.5 W/ft	8.3 W/ft	5.7 W/ft	4.5 W/ft
Efficacy	34 lm/W	30 lm/W	30 lm/W	24 lm/W	29 lm/W	24 lm/W
Max Run Length (in series)	26 ft	13 ft	28 ft	13 ft	20 ft	30 ft
Ambient Operating Temperature Range*	-5°F - 125°F (-20°C - 50°C)		-5°F - 125°F (-20°C - 50°C)		-5°F - 125°F (-20°C - 50°C)	
Control/Dimming Protocol	DMX				SPI Protocol UCS 2904	SPI Protocol UCS 2903

\*Ambient Operating Temperature Range to maintain L70 of 50k+ hours in normal mounting conditions for the fixture. Exceeding Ambient Operating Temperature Range may result in decreased life/output. Consult Technical Support for specific inquiries.

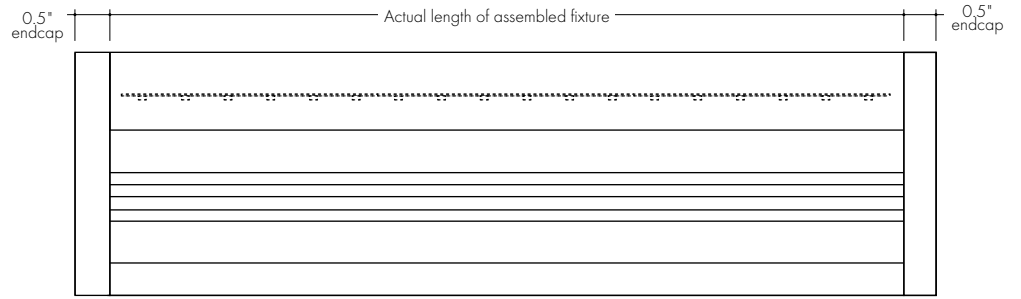
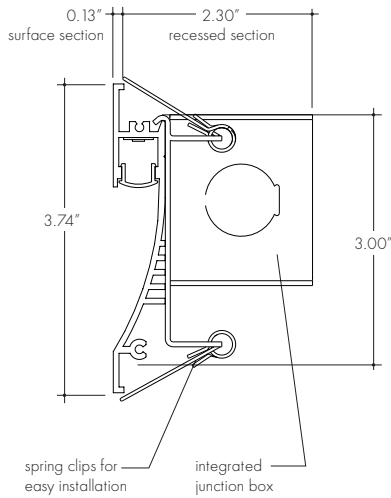
RGBW (3000K)					Dominant Wavelength		
Tape	CRI	TM-30			Color	RGB42/RGBW36	RGBX18/RGBWX18
		R <sub>f</sub>	R <sub>g</sub>	R <sub>g</sub>			
RGBW36	95	93	106	84	Red	620nm	621nm
RGBWX18	93	91	99	64	Green	525nm	519nm
					Blue	467nm	465nm

**Ordering Code**

MODEL	LENGTH <sup>1</sup>	OUTPUT	CCT	LENS	FINISH <sup>2</sup>	LEFT END CAP	RIGHT END CAP	POWER FEED LEFT END <sup>4,5</sup>	POWER FEED RIGHT END <sup>4,5</sup>
WP - Wall Plus	8"-120" 2" increments	RGBW36SO - Standard RGBW36HO - High RGB42SO - Standard RGB42HO - High	CLR - Color	F - Frosted	BASE SA - Silver Anodized	LE - Endcap Left End LN - No Endcap Left End	RE - Endcap Right End RN - No Endcap Right End	JUNCTION BOX LJB - Junction Box Left	JUNCTION BOX RNPF - No Power Feed
		8"-120" 4" increments	RGBWX18SO - Standard RGBX18SO - Standard		PXSPI - Smart Pixel Control			POWDER COAT BK - Black BZ - Bronze WH - White	LJNP - No Power Feed
					PREMIUM MBK - Matte Black WN - Warm Nickel AB - Aged Brass PG - Polished Gold <sup>3</sup> CH - Chrome <sup>3</sup>				

1 - Custom lengths and increments are available, please consult Inside Sales with specific request.  
 2 - Non Base finishes may have extended lead times. Custom RALs are available, please consult Inside Sales with specific request.  
 3 - Polished Gold finishes and Chrome finishes have a maximum fixture length of 96"  
 4 - NOTE: Cannot pair LJB-RJB together. Only one power feed per fixture/section on Wall Plus  
 5 - Junction Box comes with 24" plenum rated wire.

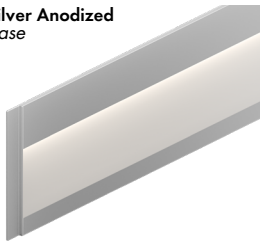
**Product Dimensions**



**Finish Options**

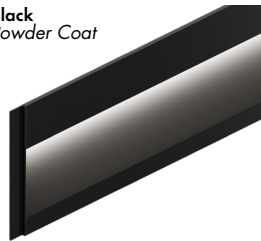
- Finish options are available in a wide variety, allowing for complete customization of style and aesthetic.
- Non Base finishes may have extended lead times.
- Polished Gold and Chrome finishes have a maximum fixture length of 96".
- Custom RALs are available, please consult Inside Sales with specific request.

**Silver Anodized Base**



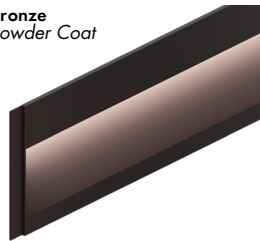
Silver Anodized is a soft silver with a clear finish.

**Black Powder Coat**



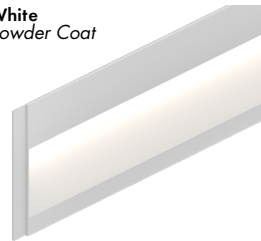
Black is a true deep black with a glossy finish.

**Bronze Powder Coat**



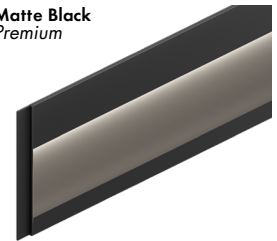
Bronze is a rich, dark brown with a satin finish.

**White Powder Coat**



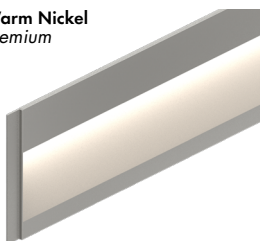
White is a polar bright white and field paintable.

**Matte Black Premium**



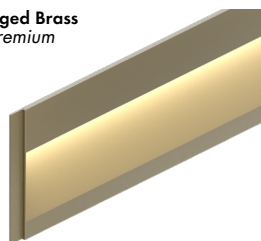
Matte Black is a dark, pitch-black with a soft flat finish.

**Warm Nickel Premium**



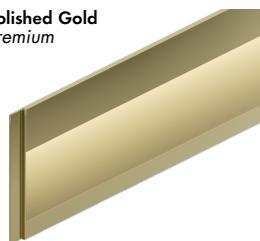
Warm Nickel is a soft, silvery smoke with warm tones and a satin finish.

**Aged Brass Premium**



Aged Brass is a deep brown shade with slightly golden undertones.

**Polished Gold Premium**



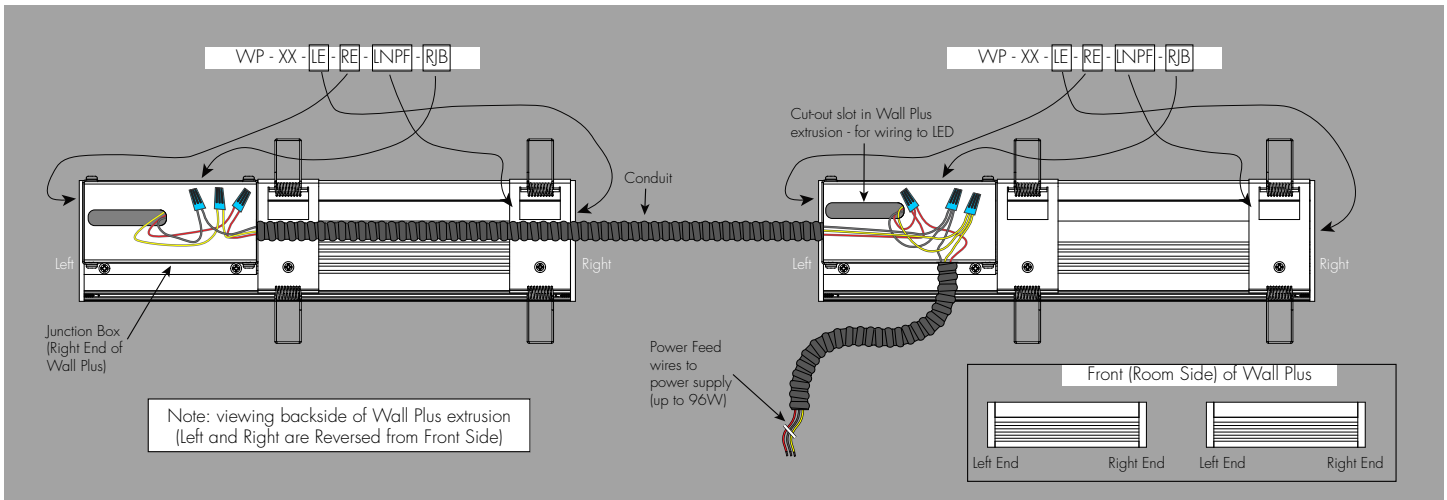
Polished Gold is bright and radiant for a brilliant finish.

**Chrome Premium**

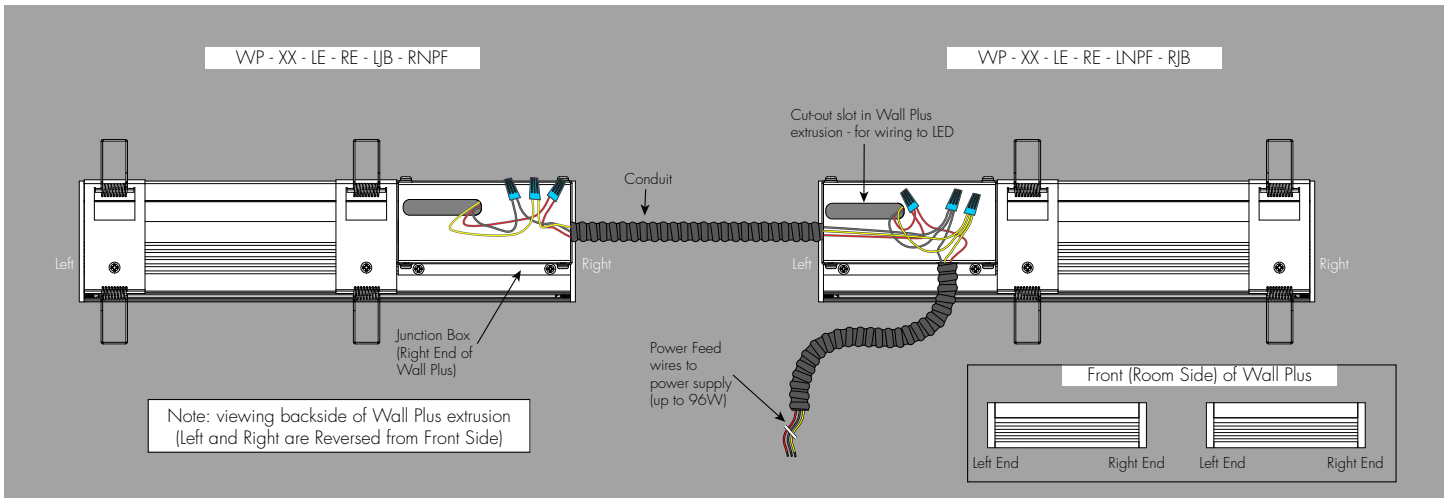


Chrome is a highly reflective silver polish.

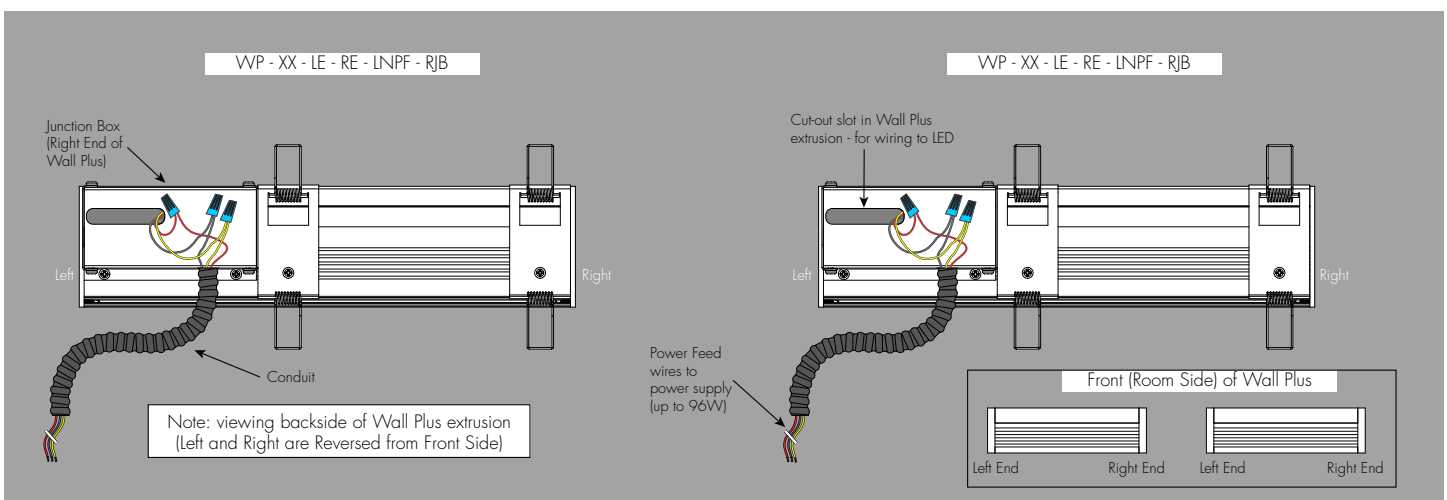
**Sample Layout of Power Feed (Backside of Wall Plus)**



**Sample Layout of Power Feed (Backside of Wall Plus)**



**Sample Layout of Power Feed (Backside of Wall Plus)**

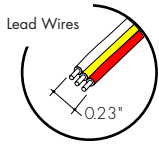


## Powerfeeds and Connectors

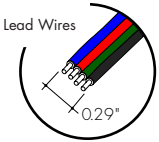
### Linking and Extension Cable Options

Jumpers, Adapters, and Lead Wires are included

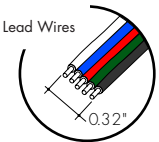
**For use with RGB Pixel (RGBX18) and RGBW Pixel (RGBWX18):**



**For use with RGB (RGB42):**

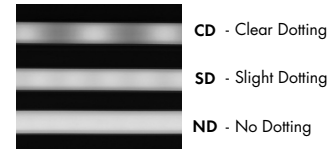


**For use with RGBW (RGBW36):**



## Light Transmission and Dotting

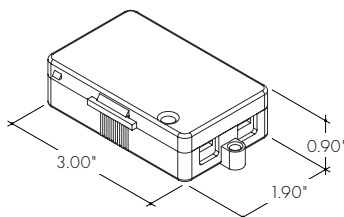
Output Options	Lens/Accessory			
	Frosted Lens			
Dimming Level	100%	50%	10%	1%
RGBW36SO	CD	CD	CD	CD
RGBW36HO	CD	CD	CD	CD
RGB42SO	CD	CD	CD	CD
RGB42HO	CD	CD	CD	CD
RGBWX18SO	CD	CD	CD	CD
RGBX18SO	CD	CD	CD	CD
<b>Transmission Percentage</b>	100%			



## Accessory Options

### LVSP-4T-BK

Low Voltage, 4 Terminal Splice Box, Black



**Power Consumption**

Tested at Full Power with PS-UNI Series power supplies.

Standard Nominal Lengths offered provide minimal shadowing. For alternate lengths, please consult Inside Sales with specific request.

**RGB/RGBW (RGB42/RGBW36)**

Nominal Length (in)	Actual Length	Watts				Nominal Length (in)	Actual Length	Watts				Nominal Length (in)	Actual Length	Watts				Nominal Length (in)	Actual Length	Watts			
		RGBW36		RGB42				RGBW36		RGB42				RGBW36		RGB42				RGBW36		RGB42	
		SO	HO	SO	HO			SO	HO	SO	HO			SO	HO	SO	HO			SO	HO	SO	HO
12	10 12/16	4.0	7.3	4.4	8.6	47	46 3/16	14.4	27.5	16.8	31.3	82	81 10/16	26.1	49.6	29.4	53.8	117	-	-	-	-	
13	12 12/16	4.0	7.3	4.4	8.6	48	-	-	-	-	-	83	-	-	-	-	-	118	117 1/16	37.1	66.2	41.3	73.1
14	-	-	-	-	-	49	48 3/16	15.1	28.8	17.5	32.7	84	83 10/16	26.8	50.8	30.0	55.0	119	-	-	-	-	
15	14 11/16	4.5	8.5	5.2	10.0	50	-	-	-	-	-	85	-	-	-	-	-	120	119 1/16	37.8	67.5	41.9	74.0
16	-	-	-	-	-	51	50 2/16	15.8	30.0	18.3	34.0	86	85 9/16	27.4	51.9	30.7	56.2	-	-	-	-	-	
17	16 11/16	5.1	9.7	5.9	11.3	52	-	-	-	-	-	87	-	-	-	-	-	-	-	-	-	-	
18	-	-	-	-	-	53	52 2/16	16.4	31.2	18.9	35.1	88	87 9/16	28.0	52.9	31.4	57.3	-	-	-	-	-	
19	18 10/16	5.6	10.9	6.7	12.6	54	-	-	-	-	-	89	-	-	-	-	-	-	-	-	-	-	
20	-	-	-	-	-	55	54 1/16	17.0	32.4	19.6	36.3	90	89 8/16	28.6	53.8	32.2	58.4	-	-	-	-	-	
21	20 10/16	6.2	12.1	7.4	13.9	56	-	-	-	-	-	91	-	-	-	-	-	-	-	-	-	-	
22	-	-	-	-	-	57	56 1/16	17.6	33.5	20.3	37.5	92	91 8/16	29.2	54.8	32.9	59.5	-	-	-	-	-	
23	22 9/16	6.7	13.3	8.2	15.2	58	-	-	-	-	-	93	-	-	-	-	-	-	-	-	-	-	
24	-	-	-	-	-	59	58	18.2	34.7	21.0	38.7	94	93 7/16	29.9	55.8	33.6	60.5	-	-	-	-	-	
25	24 9/16	7.3	14.5	8.9	16.6	60	60	18.9	35.9	21.7	39.8	95	-	-	-	-	-	-	-	-	-	-	
26	-	-	-	-	-	61	-	-	-	-	-	96	95 7/16	30.2	56.3	34.0	61.1	-	-	-	-	-	
27	26 8/16	8.0	15.7	9.6	18.0	62	61 15/16	19.5	37.1	22.4	41.1	97	-	-	-	-	-	-	-	-	-	-	
28	-	-	-	-	-	63	-	-	-	-	-	98	97 6/16	30.8	57.2	34.7	62.2	-	-	-	-	-	
29	28 8/16	8.6	17.0	10.4	19.4	64	63 15/16	20.2	38.4	23.2	42.4	99	-	-	-	-	-	-	-	-	-	-	
30	-	-	-	-	-	65	-	-	-	-	-	100	99 6/16	31.3	57.9	35.4	63.4	-	-	-	-	-	
31	30 7/16	9.3	18.2	11.1	20.7	66	65 14/16	20.8	39.7	24.0	43.7	101	-	-	-	-	-	-	-	-	-	-	
32	-	-	-	-	-	67	-	-	-	-	-	102	101 5/16	31.9	58.6	36.0	64.7	-	-	-	-	-	
33	32 7/16	9.7	18.8	11.5	21.4	68	67 14/16	21.5	41.0	24.7	45.1	103	-	-	-	-	-	-	-	-	-	-	
34	-	-	-	-	-	69	-	-	-	-	-	104	103 5/16	32.4	59.3	36.7	65.9	-	-	-	-	-	
35	34 6/16	10.3	20.0	12.2	22.8	70	69 13/16	22.1	42.3	25.5	46.4	105	-	-	-	-	-	-	-	-	-	-	
36	-	-	-	-	-	71	-	-	-	-	-	106	105 4/16	32.9	60.0	37.3	67.2	-	-	-	-	-	
37	36 6/16	11.0	21.3	13.0	24.2	72	71 13/16	22.8	43.5	26.3	47.8	107	-	-	-	-	-	-	-	-	-	-	
38	-	-	-	-	-	73	-	-	-	-	-	108	107 4/16	33.5	60.7	38.0	68.4	-	-	-	-	-	
39	38 5/16	11.7	22.5	13.7	25.6	74	73 12/16	23.5	44.8	26.9	49.0	109	-	-	-	-	-	-	-	-	-	-	
40	-	-	-	-	-	75	-	-	-	-	-	110	109 3/16	34.0	61.4	38.6	69.7	-	-	-	-	-	
41	40 5/16	12.4	23.8	14.5	27.0	76	75 12/16	24.1	46.0	27.6	50.2	111	-	-	-	-	-	-	-	-	-	-	
42	-	-	-	-	-	77	-	-	-	-	-	112	111 3/16	34.8	62.6	39.3	70.5	-	-	-	-	-	
43	42 4/16	13.1	25.0	15.2	28.5	78	77 11/16	24.8	47.2	28.2	51.4	113	-	-	-	-	-	-	-	-	-	-	
44	-	-	-	-	-	79	-	-	-	-	-	114	113 2/16	35.6	63.8	39.9	71.4	-	-	-	-	-	
45	44 4/16	13.8	26.3	16.0	29.9	80	79 11/16	25.4	48.4	28.8	52.6	115	-	-	-	-	-	-	-	-	-	-	
46	-	-	-	-	-	81	-	-	-	-	-	116	115 2/16	36.3	65.0	40.6	72.3	-	-	-	-	-	

**Power Consumption**

Tested at Full Power with PS-UNI Series power supplies.

Standard Nominal Lengths offered provide minimal shadowing. For alternate lengths, please consult Inside Sales with specific request.

**PIXEL (RGBX18/RGBWX18)**

Nominal Length (in)	Actual Length	Watts		Nominal Length (in)	Actual Length	Watts		Nominal Length (in)	Actual Length	Watts		Nominal Length (in)	Actual Length	Watts	
		RGBX18	RGBWX18			RGBX18	RGBWX18			RGBX18	RGBWX18			RGBX18	RGBWX18
		SO	SO			SO	SO			SO	SO			SO	SO
<b>12</b>	8 13/16	4.6	5.7	<b>47</b>	-	-	-	<b>82</b>	-	-	-	<b>117</b>	-	-	-
<b>13</b>	12 12/16	4.6	5.7	<b>48</b>	-	-	-	<b>83</b>	-	-	-	<b>118</b>	-	-	-
<b>14</b>	-	-	-	<b>49</b>	48 3/16	17.4	21.9	<b>84</b>	83 10/16	29.8	37.1	<b>119</b>	-	-	-
<b>15</b>	-	-	-	<b>50</b>	-	-	-	<b>85</b>	-	-	-	<b>120</b>	119 1/16	40.9	51.2
<b>16</b>	-	-	-	<b>51</b>	-	-	-	<b>86</b>	-	-	-	-	-	-	-
<b>17</b>	16 11/16	6.1	7.5	<b>52</b>	-	-	-	<b>87</b>	-	-	-	-	-	-	-
<b>18</b>	-	-	-	<b>53</b>	52 2/16	18.9	23.7	<b>88</b>	87 9/16	31.1	38.7	-	-	-	-
<b>19</b>	-	-	-	<b>54</b>	-	-	-	<b>89</b>	-	-	-	-	-	-	-
<b>20</b>	-	-	-	<b>55</b>	-	-	-	<b>90</b>	-	-	-	-	-	-	-
<b>21</b>	20 10/16	7.6	9.4	<b>56</b>	-	-	-	<b>91</b>	-	-	-	-	-	-	-
<b>22</b>	-	-	-	<b>57</b>	56 1/16	20.3	25.4	<b>92</b>	91 8/16	32.4	40.3	-	-	-	-
<b>23</b>	-	-	-	<b>58</b>	-	-	-	<b>93</b>	-	-	-	-	-	-	-
<b>24</b>	-	-	-	<b>59</b>	-	-	-	<b>94</b>	-	-	-	-	-	-	-
<b>25</b>	24 9/16	9.1	11.3	<b>60</b>	60	21.7	27.1	<b>95</b>	-	-	-	-	-	-	-
<b>26</b>	-	-	-	<b>61</b>	-	-	-	<b>96</b>	95 7/16	33.4	41.6	-	-	-	-
<b>27</b>	-	-	-	<b>62</b>	-	-	-	<b>97</b>	-	-	-	-	-	-	-
<b>28</b>	-	-	-	<b>63</b>	-	-	-	<b>98</b>	-	-	-	-	-	-	-
<b>29</b>	28 8/16	10.6	13.2	<b>64</b>	63 15/16	23.0	28.8	<b>99</b>	-	-	-	-	-	-	-
<b>30</b>	-	-	-	<b>65</b>	-	-	-	<b>100</b>	99 6/16	34.6	43.2	-	-	-	-
<b>31</b>	-	-	-	<b>66</b>	-	-	-	<b>101</b>	-	-	-	-	-	-	-
<b>32</b>	-	-	-	<b>67</b>	-	-	-	<b>102</b>	-	-	-	-	-	-	-
<b>33</b>	32 7/16	11.7	14.6	<b>68</b>	67 14/16	24.4	30.5	<b>103</b>	-	-	-	-	-	-	-
<b>34</b>	-	-	-	<b>69</b>	-	-	-	<b>104</b>	103 5/16	35.9	44.8	-	-	-	-
<b>35</b>	-	-	-	<b>70</b>	-	-	-	<b>105</b>	-	-	-	-	-	-	-
<b>36</b>	-	-	-	<b>71</b>	-	-	-	<b>106</b>	-	-	-	-	-	-	-
<b>37</b>	36 6/16	13.1	16.5	<b>72</b>	71 13/16	25.8	32.3	<b>107</b>	-	-	-	-	-	-	-
<b>38</b>	-	-	-	<b>73</b>	-	-	-	<b>108</b>	107 4/16	37.2	46.4	-	-	-	-
<b>39</b>	-	-	-	<b>74</b>	-	-	-	<b>109</b>	-	-	-	-	-	-	-
<b>40</b>	-	-	-	<b>75</b>	-	-	-	<b>110</b>	-	-	-	-	-	-	-
<b>41</b>	40 5/16	14.6	18.3	<b>76</b>	75 12/16	27.1	33.9	<b>111</b>	-	-	-	-	-	-	-
<b>42</b>	-	-	-	<b>77</b>	-	-	-	<b>112</b>	111 3/16	38.4	48.0	-	-	-	-
<b>43</b>	-	-	-	<b>78</b>	-	-	-	<b>113</b>	-	-	-	-	-	-	-
<b>44</b>	-	-	-	<b>79</b>	-	-	-	<b>114</b>	-	-	-	-	-	-	-
<b>45</b>	44 4/16	16.0	20.1	<b>80</b>	79 11/16	28.4	35.5	<b>115</b>	-	-	-	-	-	-	-
<b>46</b>	-	-	-	<b>81</b>	-	-	-	<b>116</b>	115 2/16	39.7	49.6	-	-	-	-

### Voltage Drop Calculator

The below chart assumes nominal voltage of 24 Volts and a Voltage Drop Allowance of 3% through the wire

Wattage [W]	Maximum Wire Length From Power Supply to Start of Run [ft]						
	12 AWG	14 AWG	16 AWG	18 AWG	20 AWG	22 AWG	24 AWG
<b>5</b>	1088.2	684.4	430.3	270.6	170.2	107.1	67.3
<b>10</b>	544.1	342.2	215.1	135.3	85.1	53.5	33.7
<b>15</b>	362.7	228.1	143.4	90.2	56.7	35.7	22.4
<b>20</b>	272.0	171.1	107.6	67.7	42.6	26.8	16.8
<b>25</b>	217.6	136.9	86.1	54.1	34.0	21.4	13.5
<b>30</b>	181.4	114.1	71.7	45.1	28.4	17.8	11.2
<b>35</b>	155.5	97.8	61.5	38.7	24.3	15.3	9.6
<b>40</b>	136.0	85.5	53.8	33.8	21.3	13.4	8.4
<b>45</b>	120.9	76.0	47.8	30.1	18.9	11.9	7.5
<b>50</b>	108.8	68.4	43.0	27.1	17.0	10.7	6.7
<b>55</b>	98.9	62.2	39.1	24.6	15.5	9.7	6.1
<b>60</b>	90.7	57.0	35.9	22.6	14.2	8.9	5.6
<b>65</b>	83.7	52.6	33.1	20.8	13.1	8.2	5.2
<b>70</b>	77.7	48.9	30.7	19.3	12.2	7.6	4.8
<b>75</b>	72.5	45.6	28.7	18.0	11.3	7.1	4.5
<b>80</b>	68.0	42.8	26.9	16.9	10.6	6.7	4.2
<b>85</b>	64.0	40.3	25.3	15.9	10.0	6.3	4.0
<b>90</b>	60.5	38.0	23.9	15.0	9.5	5.9	3.7
<b>96</b>	56.7	35.6	22.4	14.1	8.9	5.6	3.5

### Power Supplies

See fixture and power supply instructions & spec sheet for wiring information. Dimming possible in select models - view Luminii website for list of compatible dimmers.

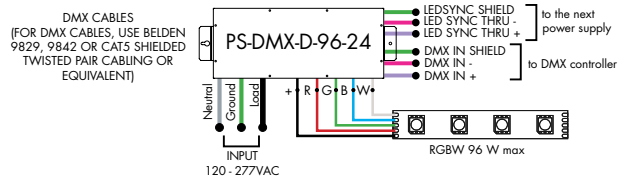
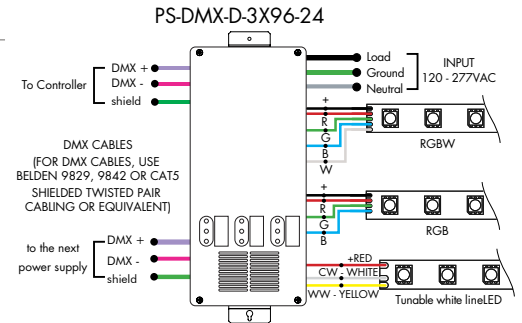
**For use with RGB/RGBW, RGB42/RGBW36 or with Tunable White, TW68**

Requires Controller

#### Ordering Code DMX Dimming Power Supplies 0.1% 120VAC - 277VAC

MODEL	INPUT CONTROL	ENVIRONMENT	WATTAGE	OUTPUT
PS-Power Supply, 120-277VAC	DMX-DMX (0.1%)	D-Dry	96-96 Watts 3X96-3X96 Watts	24-24 VDC

MODELS	96W	3X96
<b>Length</b>	14.40"	15.00"
<b>Width</b>	5.20"	6.62"
<b>Depth</b>	2.60"	4.56"



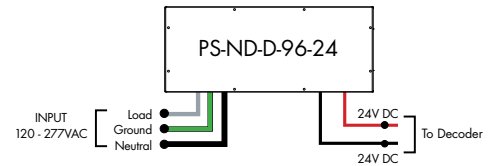
**For use with RGB/RGBW/Pixel, RGB42/RGBW36/RGBX18/RGBWX18**

Requires Controller and Decoder

#### Ordering Code Non-Dimming Power Supply 120VAC - 277VAC

MODEL	INPUT CONTROL	ENVIRONMENT	WATTAGE	OUTPUT
PS-Power Supply, 120-277VAC	ND-Non Dimming	D-Dry	96-96 Watts	24-24 VDC

MODELS	96W
<b>Length</b>	14.40"
<b>Width</b>	5.20"
<b>Depth</b>	2.60"



**For use with RGB/RGBW/Pixel, RGB42/RGBW36/RGBX18/RGBWX18**

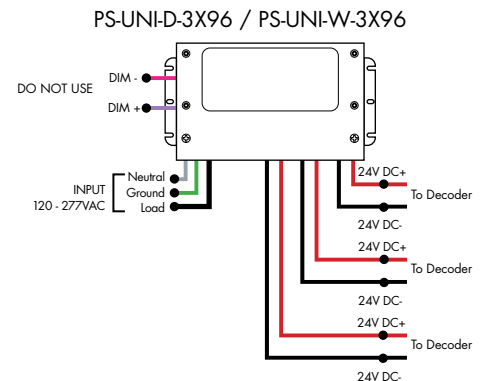
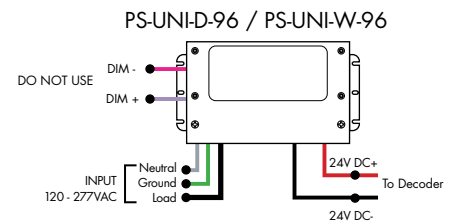
Requires Controller and Decoder

#### Ordering Code Universal Dimming Power Supplies 1% 120VAC - 277VAC

MODEL	INPUT CONTROL	ENVIRONMENT	WATTAGE	OUTPUT
PS-Power Supply, 120-277VAC	UNI-0-10V Dimming, Phase Dimming	D-Dry W-Wet	30-30 Watts 60-60 Watts 96-96 Watts 3x96-3x96 Watts	24-24 VDC

Compatibility: View a complete list of compatible dimmers on product page [\(Link\)](#)

0-10V - 1% dimming  
MLV/ELV/TRIAC - 1% dimming, consult dimming compatibility chart



MODELS	PS-UNI-W-30W	PS-UNI-W-60W	PS-UNI-W-96W	PS-UNI-W-3X96W
<b>Length</b>	6.50"	7.40"	8.66"	11.85"
<b>Width</b>	3.73"	3.73"	3.73"	4.32"
<b>Depth</b>	1.61"	1.61"	1.61"	1.81"

MODELS	PS-UNI-D-30W	PS-UNI-D-60W	PS-UNI-D-96W	PS-UNI-D-3X96W
<b>Length</b>	8.77"	8.77"	8.11"	9.94"
<b>Width</b>	4.27"	4.27"	5.60"	7.61"
<b>Depth</b>	1.83"	1.83"	1.83"	2.02"



## Controllers and Decoders

### For use with Tunable White, RGB/RGBW Power Supplies



MODEL

**RGBW-RC-R**

RGBW-RC-R - RGBW receiver

The RGBW receiver is easily paired with controller by the click of a button. Receiver can be reset to factory settings at any time.

Each receiver can store one static RGB color, one color sequence, and one brightness setting for the white LED strip. Receivers assigned to the same scene within the same zone will have the same LED static color and color sequence.

**Operating Voltage**  
12-36 VDC

**Power Capacity**  
up to 96W at 24V

**Operating Temperature Range**  
from -4°F to +122°F in case



MODEL

**RGBW-SR**

RGBW-SR - RGBW signal repeater

Extends identical signal when connected in series to an RGBW LED control system. The RGBW signal repeater works with Luminii RGB and RGBW controllers, receivers, and decoders.

RGBW signal can be extended indefinitely when adequate power supply (not included) is connected to the system.

**Operating Voltage**  
12-36 VDC

**Power Capacity**  
up to 96W at 24V

**Operating Temperature Range**  
from -4°F to +122°F in case



MODEL

**DDMX-RGBW**

DDMX-RGBW - DMX decoder

Translates controller DMX512 programs for RGB and white LED strips.

Unique DMX address for the decoder can be set easily and displayed by the numeric display on the case. Changing and resetting the DMX address requires manual input.

Use power repeater to expand output.

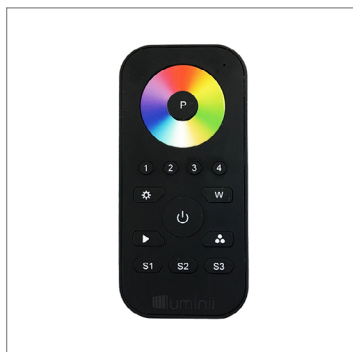
**Operating Voltage**  
12-36 VDC

**Power Capacity**  
up to 96W at 24V

**Operating Temperature Range**  
from -4°F to +122°F in case

## Controllers and Decoders

### For use with RGB/RGBW Power Supplies



MODEL

**RGBW-MC3**

RGBW-MC3 - 4-zone RGBW controller

Easy to operate wireless interface suitable for static or color changing scenes. Control 4 different color zones separately or at the same time. RGBW receiver (RGBW-RC-R) required for operation. Assign multiple receivers per zone to cover a large area.

Color wheel enables highly stable and sensitive color control functionality. Create your own color changing sequences with ease and flexibility.

#### Power

qty 3 AAA batteries

#### Scenes

up to 4 unique zones

#### Signal

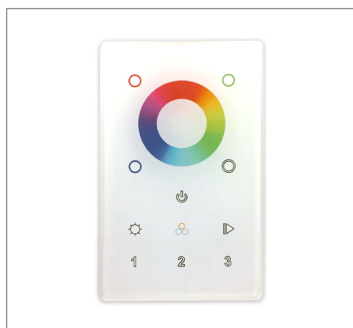
Wireless (RF)

#### Energy Saving

Deactivates after 10 seconds of inactivity

#### Color Parameters

- Brightness
- Saturation
- Primary colors
- Speed of color changing sequence
- Fading



MODEL

ZONES

COLOR

DMX - DMX  
Controller

3Z - Three Zone  
1Z - One Zone

RGBW - Red,  
Green,  
Blue, &  
White

DMX /Wireless RGB-W wall-mount controller controls DMX lighting fixtures, wireless control of RGB-W lighting fixture or use both simultaneously. Fits in any standard US switch box. Includes all the outputs in the back of the controller.

Control brightness levels with a single touch, personalize and memorize 3 different scenes, and even create 3 variations of white.

#### Features

- 2 in 1 in-Wall Controller: DMX Control or Wireless RGB-W
- 65,000 Color Options, Dimming and Speed Control
- Memory Function
- 50 Foot Wireless Range
- Easily Fits Standard US Switch Boxes
- Touch Sensitive Glass Surface
- Includes 10 Built in Programs, or Create and Play Your Own

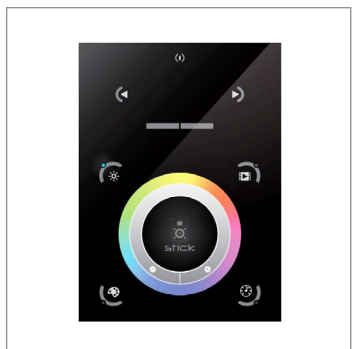
#### Operating Voltage

12 - 24V DC

#### Color Parameters

- Brightness
- Saturation
- Primary colors
- Fading
- Color changing speed

### For use with Tunable White, RGB/RGBW, Pixel Power Supplies



MODEL

**TSDMX-E**

TSDMX-E - Touchscreen DMX controller

Programmable advanced DMX512 lighting controller featuring a touch-screen interface. Operates as stand alone controller or integrated with most architectural lighting control systems. Can controller endless DMX512 enabled devices.

Mounts to standard single or dual gang wall box with the included power supply inside the junction box. Terminal block design for power and data connections.

#### Features

- Sleek glass design which sits 0.43" from the wall
- Graphical color display to show selected environment
- Color/dimmer/speed palette
- Color temperature mixing
- Touch sensitive buttons. No mechanical parts
- Touch sensitive wheel allows for accurate color selection
- Multi-zone microSD memory
- Multi-room control with 500 scenes, 10 zones
- 1024 DMX channels. Control 340 RGB fixtures
- USB & Ethernet connectivity for programming and control

#### Power Supply

7 VDC (included)

#### Programmability

PC, Mac, Tablet, Smartphone

#### Output Signal

DMX512 (1024 channels)

#### Color Parameters

- Brightness
- Saturation
- Speed of color changing sequence
- Fading / dimming / brightness

**Controllers and Decoders**

**For use with Pixel Power Supplies**



MODEL

**SR-DMX-SPI**

SR-DMX-SPI - Smart Pixel Decoder

The SR-DMX-SPI is a smart LED pixel decoder that controls RGB/RGBW pixel LED strips with SPI signal. Designed with an OLED backlit panel, the pixel controller allows for easy configuration of most settings. Four push buttons are available for control of the LED functions.  
\*For pixel only.

**Features**

- 2 in 1 in-Wall Controller: DMX Control or Wireless RGB-W
- SPI signal output for RGB/RGBW pixel light control
- DMX512 controllable and RF/WIFI remote controllable
- Capable of addressing up to 1020 RGB pixels & 765 RGBW pixels
- OLED panel allows for easy configuration

**Operating Voltage**

12 - 36V DC

**Power capacity**

up to 96W at 24V

**Operating temperature range**

from -4°F to +122°F in case

**For use with Tunable White, RGB/RGBW Power Supplies**



MODEL

**DDMX-5CH-RDM-PRO**

DDMX-5CH-RDM-PRO-DMX512 Decoder

DMX512 decoder with RDM functionality features 5 PWM output channels with common anode. High PWM output frequency range allows the product to be used in HD video conferencing spaces. All DMX products to be installed per DMX512 Standard.

**Power**

96 Watt

**Inputs**

RJ45, XLR-5Pin, Terminal Block

**DMX Channels**

1 to 5 settable

**PWM Output Resolution Ratio**

8 or 16 bit

**PWM Output Frequency**

500Hz - 30KHz

**Output Dimming Curve Gamma Value**

0.1 ~ 9.9



MODEL

**RGBW-WI-R**

RGBW-WI-R - WIFI generator

RGBW-WI-R creates a local network that enables any electronic device (phone, tablet, etc.) to control the RGB/W strip connected to a RGBW-RC-R receiver.

The control functions are achieved through a free application download for Android and iOS devices called REALCOLOR.

**Operating Voltage**

12-36 VDC

**Power Supply**

PI-130-24 (included)

**Operating Temperature Range**

from -4°F to +122°F in case