

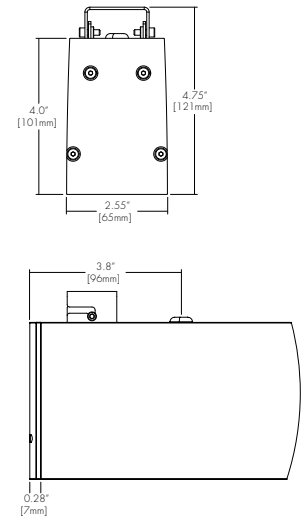
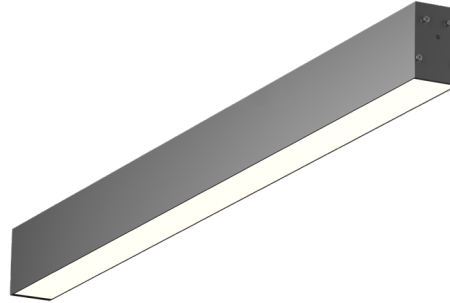
# VESTA WET

SURFACE MOUNT  
TUNABLE WHITE



## Features

- Full length seamless lenses range from 4 to 8 feet.
- Not limited to straight runs, available in L nodes, providing freedom to create seamless configurations, available in 22.5in increments.
- Integrated drivers and controls make this fixture easy to install and widely applicable.
- Features a symmetrical, high-performance WET RATED frosted lens which illuminates the surface evenly with no shadows or dark spots.
- Five Year Warranty



## Finish Options

White  Black  Silver



RoHS



MADE IN CANADA

## Technical Information

OUTPUT OPTIONS	TW04	TW06	TW08
<b>Lumen Output</b>	418 lm/ft	592 lm/ft	776 lm/ft
<b>Average Power Consumption</b>	2.5 W/ft	3.5 W/ft	4.8 W/ft
<b>Efficacy</b>	20 lm/W	21 lm/W	21 lm/W

CCT	CRI	TM-30		
		R <sub>f</sub>	R <sub>g</sub>	R <sub>9</sub>
2700K	91	90	96	59
6500K	93	87	97	73

## Ordering Code

Integral Driver Example: Fixture VSW-SM-6ft-TW06-27K65K-F-SM-WH-010S-CSMB

### Fixture

MODEL	LENGTH	OUTPUT	CCT	LENS	MOUNTING	BODY FINISH
VSW-SM - Vesta Wet, Surface Mount	4ft - 4 feet 6ft - 6 feet 8ft - 8 feet XX - System <sup>7</sup>	TW04 - 418 lm/ft (4.8 W/ft) <sup>2</sup> TW06 - 592 lm/ft (7.2 W/ft) TW08 - 776 lm/ft (9.6 W/ft)	27K65K - Tunable White, 2700K-6500K <sup>1</sup>	F - Frosted Lens	SM - Surface Mount	Standard WH - White BK - Black SL - Silver

DRIVER	DRIVER OPTIONS <sup>6</sup>
010S - 0-10V, 1% Dimming, 120/277V <sup>3</sup> DALI - EdoLED, DALI protocol 2, DT-6, Log, 0.1% Dimming, 120/277V DMX - EdoLED, DMX, 0.1% Dimming, 120V/277V	NA - None CSMB - Casambi <sup>4</sup> MNOD - PIR Motion Sensor, Occupancy, Daylight Harvesting <sup>5</sup>

010S - 0-10V, 1% Dimming, 120/277V<sup>3</sup>  
DALI - EdoLED, DALI protocol 2, DT-6, Log, 0.1% Dimming, 120/277V  
DMX - EdoLED, DMX, 0.1% Dimming, 120V/277V

NA - None  
CSMB - Casambi<sup>4</sup>  
MNOD - PIR Motion Sensor, Occupancy, Daylight Harvesting<sup>5</sup>

1 - Tunable White output numbers are at representative of 4000K.  
2 - Tunable White at 4ft length, not available with Output TW04.  
3 - 010S driver is only available with driver option CSMB.

4 - CSMB with 010S/DALI drivers only.  
5 - MNOD contact manufacturer for build assistance - (MOD Only).  
6 - AVNR contact manufacturer for build assistance - (MOD Only).  
7 - Customizable configurations available, contact factory (MOD only).

CONTACT FACTORY FOR MORE OPTIONS.

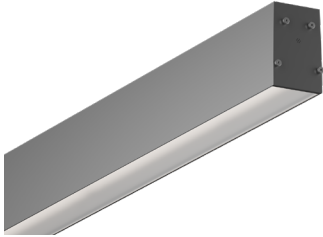
# VESTA WET

SURFACE MOUNT  
TUNABLE WHITE



## Lens

**F**  
Frosted Lens



## Cut Lengths

Vesta Wet Rated Surface Mount end cap will add 0.28" (7mm) per side to the total length.

CODE	FIXTURE LENGTH LONGUEUR *1	Feet	4	6	8	10
A	44.5"					
B (6)	66.5"					
C (8)	88.5"					

# VESTA WET

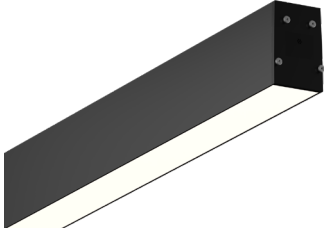
SURFACE MOUNT  
TUNABLE WHITE



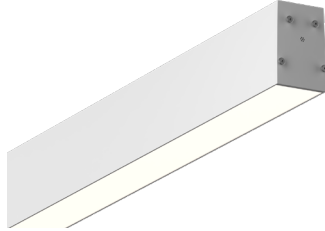
## Standard Finish

---

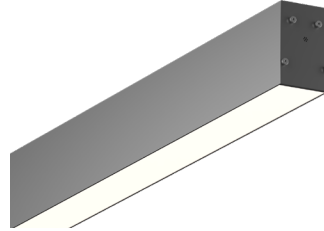
**BK**  
Black



**WH**  
White

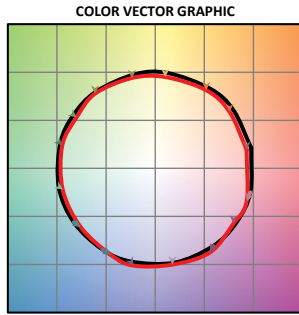


**SL**  
Silver



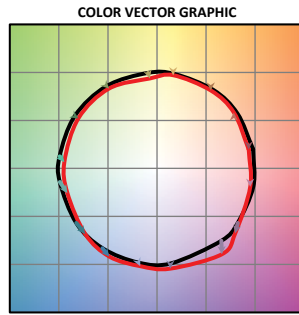
## TM-30

**Tunable White 2700K**



— Reference Source — Test Source

**Tunable White 6500K**



— Reference Source — Test Source

## Photometry

**Tunable White Down**

