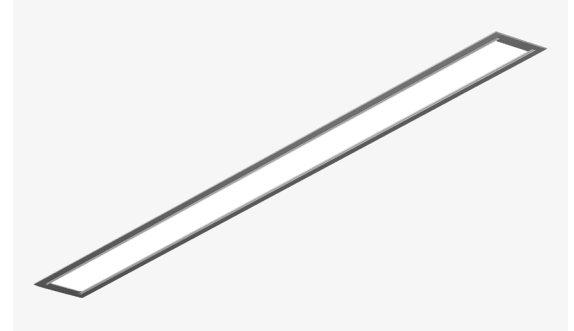


Features

- Full length seamless lenses range from 4 to 8 feet.
- Integrated drivers and controls make this fixture easy to install and widely applicable.
- The Vesta Recessed line features a powerful light in a clean, recessed format while not sacrificing the symmetrical, high-performance WET RATED frosted lens which illuminates the surface evenly with no shadows or dark spots.
- Five Year Warranty.



Finish Options

White Black Silver

RoHS



Technical Information

OUTPUT OPTIONS (Frosted Lens)	04	06	08	10
Lumen Output	400 lm/ft	566 lm/ft	843 lm/ft	1034 lm/ft
Average Power Consumption	3.8 W/ft	5.7 W/ft	9.4 W/ft	12.0 W/ft
Efficacy	104 lm/W	100 lm/W	90 lm/W	87 lm/W

OUTPUT OPTIONS (Asymmetric Lens)	04	06	08
Lumen Output	433 lm/ft	648 lm/ft	800 lm/ft
Average Power Consumption	8.1 W/ft	13.8 W/ft	17.3 W/ft
Efficacy	54 lm/W	47 lm/W	46 lm/W

CCT	Multiplier	CRI	TM-30		
			R _f	R _g	R ₉
2700K	0.92	93+	92	100	50+
3000K	0.97	93+	92	103	50+
3500K	1.00	93+	93	102	50+
4000K	1.07	93+	92	101	50+

Ordering Code

Integral Driver Example: Fixture VSDR-6ft-06-35K-F-GS-WH-010S-CSMB

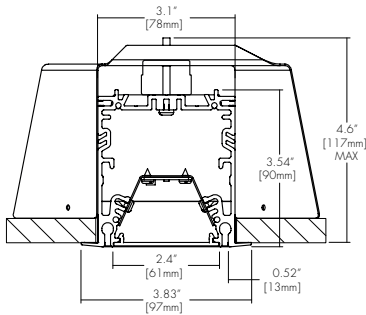
MODEL	LENGTH	OUTPUT DOWN	CCT	LENS DOWN
VSW-R - Vesta Wet, Recessed	4ft - 4 feet 6ft - 6 feet 8ft - 8 feet XX - System ³	04 - 400 lm/ft (3.8 W/ft) 06 - 566 lm/ft (5.7 W/ft) 08 - 843 lm/ft (9.4 W/ft) 10 - 1034 lm/ft (12 W/ft)	27K - 2700K 30K - 3000K 35K - 3500K 40K - 4000K	F - Frosted Lens AS - Asymmetric Lens ^{1,2}
MOUNTING	FINISH	DRIVER	DRIVER OPTIONS	
GS - Gypsum Surface Mounting Bracket	WH - White BK - Black SL - Silver	010S - 010V, 1% Dimming, 120V/277V 0103 - 010V, 1% Dimming, 347V Only 010L - EldoLED, 010V, Linear, 0.1% Dimming, 120V/277V ³ 010G - EldoLED, 010V, Log, 0.1% Dimming, 120V/277V ³ DALI - EldoLED, DALI protocol 2, DT-6, Log, 0.1% Dimming, 120V/277V ³ LUTE - Lutron Hilume Ecodigital, 1% Dimming, 120V/277V ⁴ DMX - EldoLED, DMX, 0.1% Dimming, 120V/277V ³	NA - None EMG - Emergency Driver ^{5,6} CSMB - Casambi ⁷ AWNR - Athena ⁸	

1 - Asymmetric Lens is not compatible with 10 output.
2 - Asymmetric Lens not compatible with 010L/010G/DALI/LUTE/DMX
3 - Customizable configurations available, contact factory (MOD only).
4 - OUTPUT 08/10 not available for LUTE driver.

5 - EMG Battery Back-Up not available on length 2ft, 4ft or 6ft, illuminates 4ft or 6ft section based on lumen output.
6 - EMG not available with 0103/LUTE/DMX drivers.
7 - CSMB with 010S/010L/010G/DALI drivers only.
8 - AWNR - Contact manufacture for build assistance - (MOD Only).

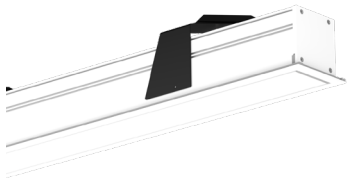
CONTACT FACTORY FOR MORE OPTIONS.

Dimensions

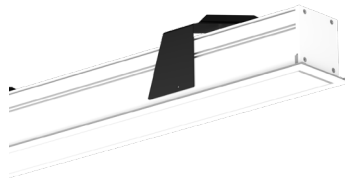


Lens

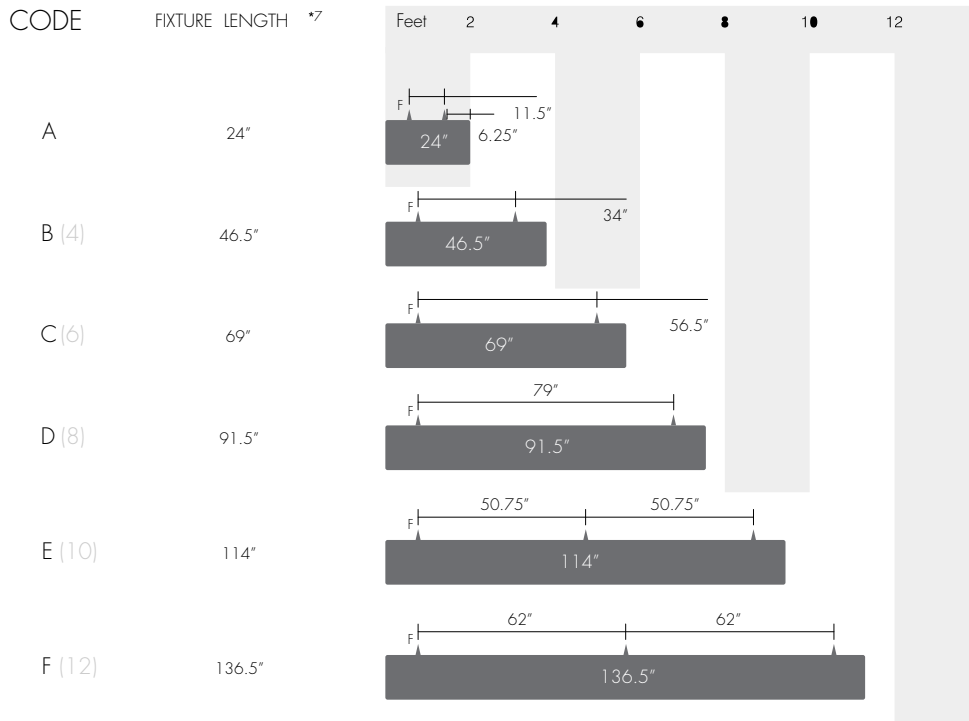
F
Frosted Lens



AS
Asymmetric Lens

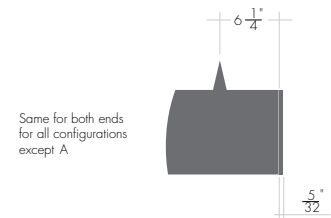


Cut Lengths



Legend

- ▲ : Mounting Point
- F : Feed Point



L node dimensions



*7 Not including end-caps. End-caps are an additional 5/32"

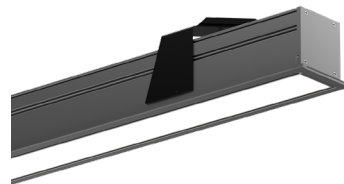
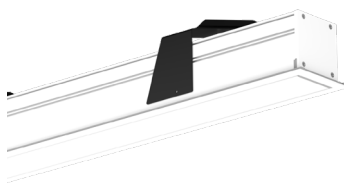
*8 For custom lengths please customer service. Cover plates will be added to each end to avoid dark spaces on lense.

Standard Finish

BK
Black

WH
White

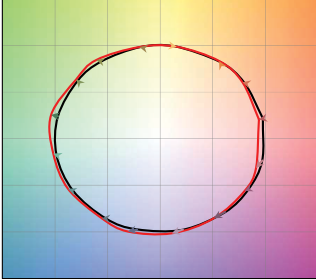
SL
Silver



TM-30

2700K

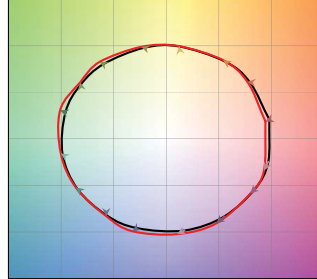
COLOR VECTOR GRAPHIC



— Reference Source — Test Source

3000K

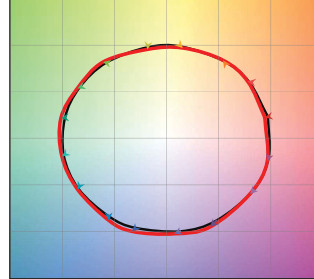
COLOR VECTOR GRAPHIC



— Reference Source — Test Source

3500K

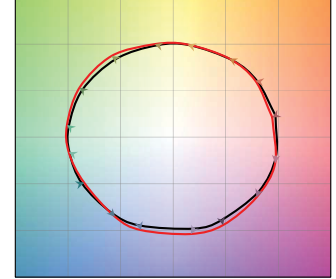
COLOR VECTOR GRAPHIC



— Reference Source — Test Source

4000K

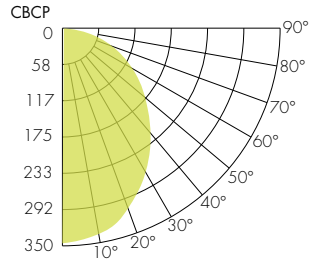
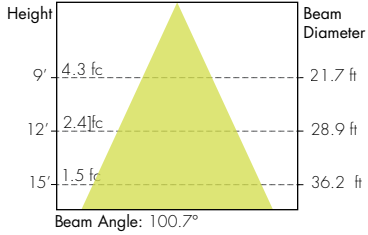
COLOR VECTOR GRAPHIC



— Reference Source — Test Source

Photometry

Static White Down Frosted Lens



Static White Down Asymmetric Lens

