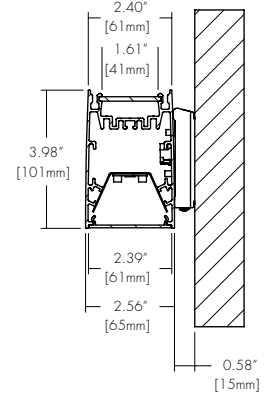
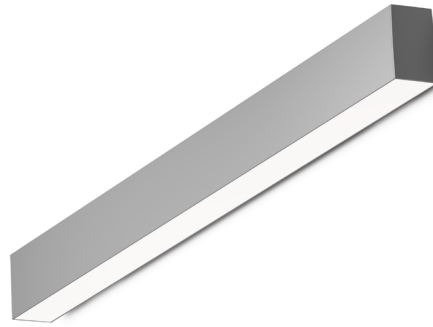


### Features

- Full length seamless lenses range from 2 to 12 feet.
- Choose either UP light or DOWN light with this architecturally, built to order LED luminaire
- Integrated drivers and controls make this fixture easy to install and widely applicable
- The subtle flared Vesta Wall Mount fixtures feature a symmetrical, high-performance frosted lens which illuminates the surface evenly with no shadows or dark spots.
- Five Year Warranty



### Finish Options

- White  Black  Silver



### Technical Information

OUTPUT OPTIONS (Frosted Lens)		04	06	08	10	12
DOWN	Lumen Output	400 lm/ft	566 lm/ft	843 lm/ft	1034 lm/ft	1220 lm/ft
	Average Power Consumption	3.8 W/ft	5.7 W/ft	9.4 W/ft	12.0 W/ft	15.1 W/ft
	Efficacy	104 lm/W	100 lm/W	90 lm/W	87 lm/W	81 lm/W
	Center Beam Candlepower	346 cd	386 cd	647 cd	820 cd	965 cd
UP	Lumen Output	454 lm/ft	628 lm/ft	788 lm/ft		
	Average Power Consumption	3.8 W/ft	5.6 W/ft	7.4 W/ft		
	Efficacy	117 lm/W	112 lm/W	106 lm/W		
	Center Beam Candlepower	461 cd	578 cd	826 cd		

OUTPUT OPTIONS (Asymmetric Lens)		04	06	08
DOWN	Lumen Output	433 lm/ft	648 lm/ft	800 lm/ft
	Average Power Consumption	8.1 W/ft	13.8 W/ft	17.3 W/ft
	Efficacy	54 lm/W	47 lm/W	46 lm/W
UP	Lumen Output	433 lm/ft	648 lm/ft	800 lm/ft
	Average Power Consumption	8.1 W/ft	13.8 W/ft	17.3 W/ft
	Efficacy	54 lm/W	47 lm/W	46 lm/W

CCT	Multiplier	CRI	TM-30		
			R <sub>f</sub>	R <sub>g</sub>	R <sub>9</sub>
2700K	0.92	93+	92	100	50+
3000K	0.97	93+	92	103	50+
3500K	1.00	93+	93	102	50+
4000K	1.07	93+	92	101	50+

### Ordering Code

Integral Driver Example: Fixture VSD-WM-6FT-04-00-35K-F-N-WH-010S-NA

#### Fixture

MODEL	LENGTH	OUTPUT DOWN <sup>1</sup>	OUTPUT UP <sup>1</sup>	CCT	LENS DOWN <sup>2</sup>	LENS UP <sup>2</sup>	FINISH
VSD-WM - Vesta Dry, Wall Mount Up OR Down	2ft - 2 feet 4ft - 4 feet 6ft - 6 feet 8ft - 8 feet 10ft - 10 feet 12ft - 12 feet XX - System <sup>13</sup>	04 - 400 lm/ft (3.8 W/ft) 06 - 566 lm/ft (5.7 W/ft) 08 - 843 lm/ft (9.4 W/ft) 10 - 1034 lm/ft (12 W/ft) 12 - 1220 lm/ft (15 W/ft) 00 - No Downlight	04 - 454 lm/ft (3.9 W/ft) 06 - 628 lm/ft (5.6 W/ft) 08 - 788 lm/ft (7.4 W/ft) 00 - No Uplight	27K - 2700K 30K - 3000K 35K - 3500K 40K - 4000K	F - Frosted Lens AS - Asymmetric Lens <sup>4,5,6</sup> BL - Black Lens N - No Lens <sup>3</sup>	F - Frosted Lens AS - Asymmetric Lens <sup>4,5,6</sup> N - No Lens <sup>3</sup>	Standard WH - White BK - Black SL - Silver

#### DRIVER

#### DRIVER OPTIONS

- 010S - 010V, 1% Dimming, 120V/277V
- 0103 - 010V, 1% Dimming, 347V Only<sup>4</sup>
- 010L - EldoLED, 010V, Linear, 0.1% Dimming, 120V/277V<sup>5</sup>
- 010G - EldoLED, 010V, Log, 0.1% Dimming, 120V/277V<sup>5</sup>
- DALI - EldoLED, DALI protocol 2, DT-0, Log, 0.1% Dimming, 120V/277V<sup>5</sup>
- LUTE - Lutron HiLume Ecodigital, 1% Dimming, 120V/277V<sup>6</sup>
- DMX - EldoLED, DMX, 0.1% Dimming, 120V/277V<sup>5</sup>

- NA - None
- EMG - Emergency Driver<sup>7,8</sup>
- CSMB - Casambi<sup>9</sup>
- AWNR - Athena<sup>11</sup>
- MNOD - PIR Motion Sensor, Occupancy, Daylight Harvesting<sup>12</sup>

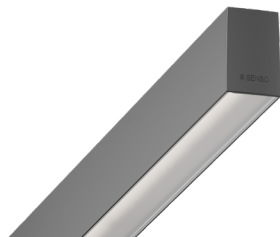
1 - Select only Down or Up output. Other must be 00.  
2 - Select only Down or Up lens. Other must be N.  
3 - When Down lens is N it will receive Filler plate.  
4 - Asymmetric lens not compatible with 2ft Length  
5 - Asymmetric lens not compatible with 10 or 12 output.  
6 - Asymmetric lens not compatible with 010L/010G/DALI/LUTE/DMX

7 - 0103 Driver (347V) not available with 2ft Length.  
8 - CSMB with 010S/010L/010G/DALI drivers only.  
9 - EMG not available with 0103/LUTE/DMX drivers.  
10 - EMG Battery Back-Up not available on length 2ft, 4ft or 6ft, illuminates 4ft or 6ft section based on lumen output.  
11 - AWNR contact manufacturer for build assistance - (MOD Only).  
12 - MNOD contact manufacturer for build assistance - (MOD Only).  
13 - Customizable configurations available, contact factory (MOD only).

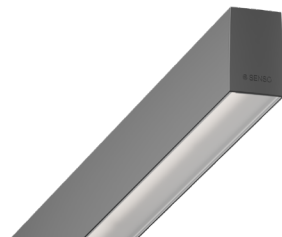
CONTACT FACTORY FOR MORE OPTIONS.

## Lens Down

**F**  
Frosted Lens



**AS**  
Asymmetric Lens

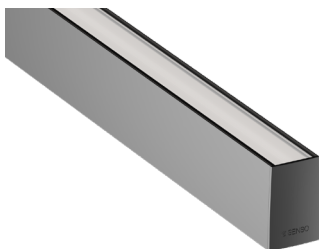


**BL**  
Black Lens

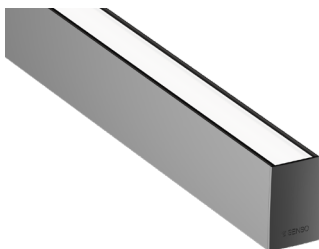


## Lens Up

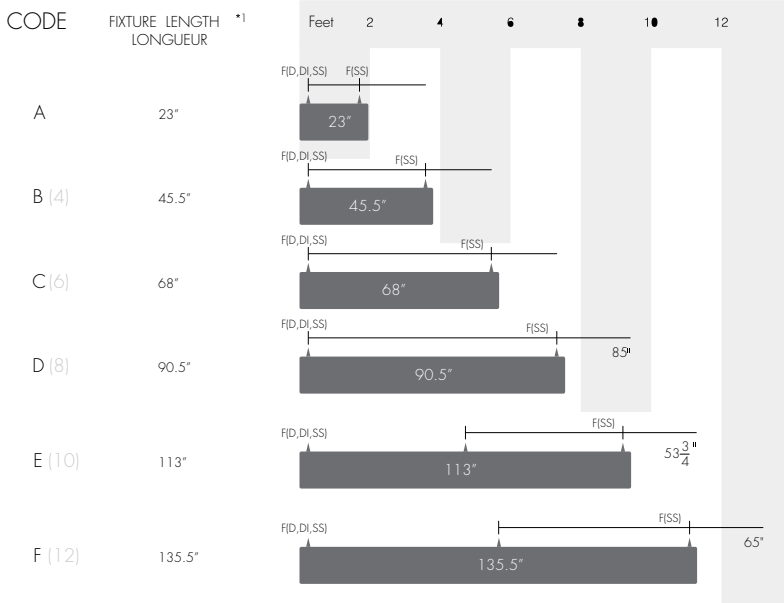
**F**  
Frosted Lens



**AS**  
Asymmetric Lens

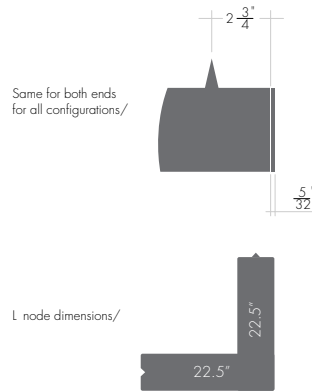


## Cut Lengths



### Legend

- ▲ : Suspension Point
- F() : Feed Point
- D : Direct
- DI : Direct / Indirect
- SS : Separate Switching



\*1 Not including end-caps. End-caps are an additional 5/32"

For custom lengths please call customer service. Cover plates will be added to each end to avoid dark spaces on lense.

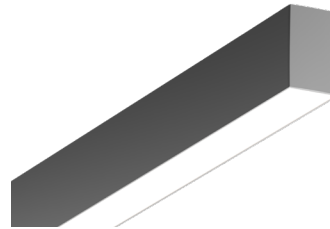
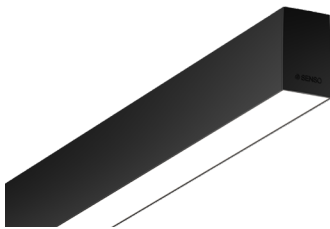
Sensor adds 3.75" to standard vesta length

## Standard Finish

**BK**  
Black

**WH**  
White

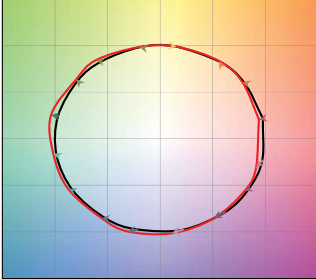
**SL**  
Silver



## TM-30

### 2700K

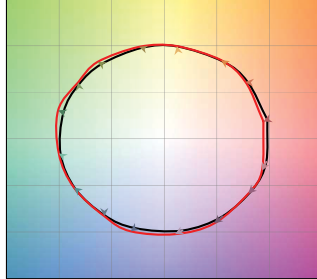
COLOR VECTOR GRAPHIC



— Reference Source — Test Source

### 3000K

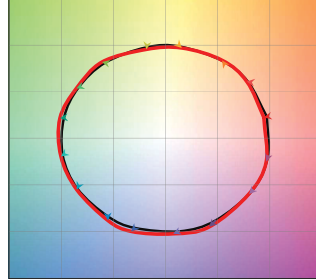
COLOR VECTOR GRAPHIC



— Reference Source — Test Source

### 3500K

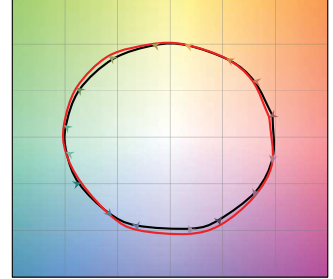
COLOR VECTOR GRAPHIC



— Reference Source — Test Source

### 4000K

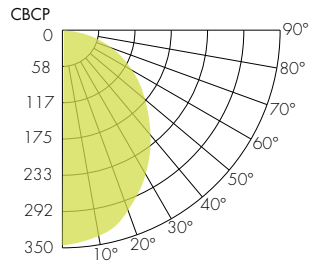
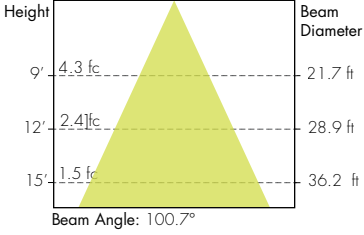
COLOR VECTOR GRAPHIC



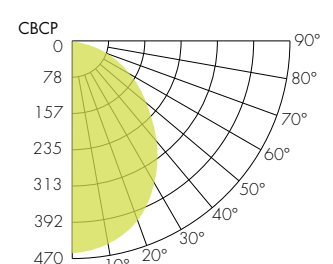
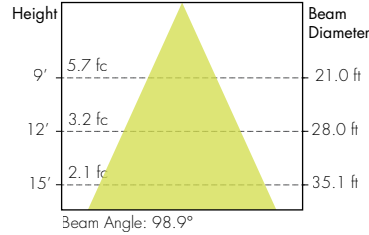
— Reference Source — Test Source

## Photometry

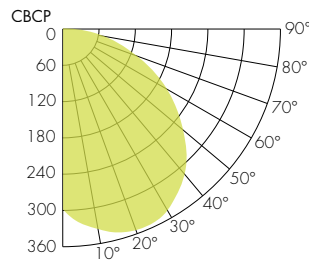
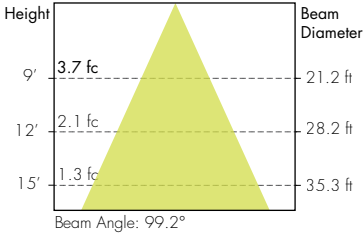
### Static White Down Frosted Lens



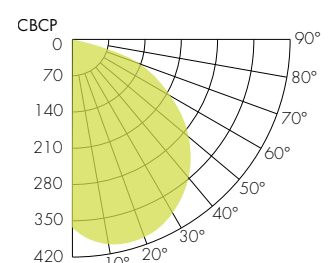
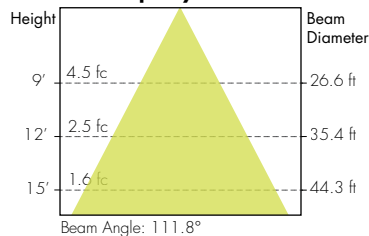
### Static White Up Frosted



### Static White Down Asymmetric Lens



### Static White Up Asymmetric



### Static White Black Lens

