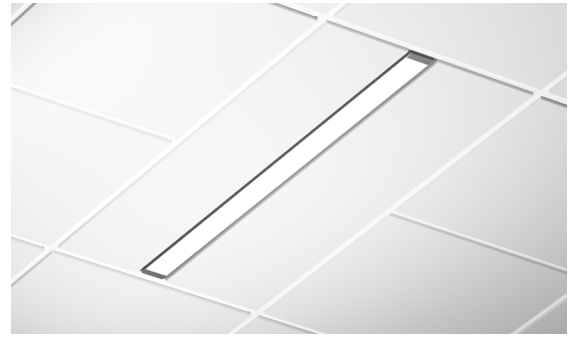


## Features

- Full length seamless lenses range from 2 to 12 feet.
- Trimless design meant to blend directly into the environment
- Not limited to straight runs, available in L nodes, providing freedom to create seamless configurations, available in 22.5in increments.
- Integrated drivers and controls make this fixture easy to install and widely applicable
- The Vesta Recessed line features a powerful light in a clean, recessed format while not sacrificing the symmetrical, high-performance frosted lens which illuminates the surface evenly with no shadows or dark spots.
- Five Year Warranty.



## Finish Options



## Technical Information

OUTPUT OPTIONS	TW04	TW06	TW08
<b>Lumen Output</b>	418 lm/ft	592 lm/ft	776 lm/ft
<b>Average Power Consumption</b>	2.5 W/ft	3.5 W/ft	4.8 W/ft
<b>Efficacy</b>	20 lm/W	21 lm/W	21 lm/W

CCT	CRI	TM-30		
		R <sub>f</sub>	R <sub>g</sub>	R <sub>o</sub>
2700K	91	90	96	59
6500K	93	87	97	73

## Ordering Code

Integral Driver Example: Fixture VSD-L-6ft-TW04-27K65K-F-AF5-WH-010S-CSMB

### Fixture

MODEL	LENGTH	OUTPUT DOWN <sup>2</sup>	CCT	LENS DOWN
VSD-L - Vesta Dry, Recessed Trimless	4ft - 4 feet 6ft - 6 feet 8ft - 8 feet 10ft - 10 feet 12ft - 12 feet XX - System <sup>6</sup>	TW04 - 418 lm/ft (4.8 W/ft) <sup>1</sup> TW06 - 592 lm/ft (7.2 W/ft) TW08 - 776 lm/ft (9.6 W/ft)	27K65K - Tunable White, 2700K-6500K	F - Frosted Lens

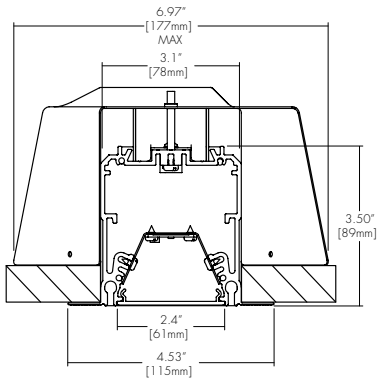
MOUNTING	FINISH	DRIVER	DRIVER OPTIONS
GS - Gypsum Surface Mounting Bracket AF5 - AC + Feed Cable, 5ft long AF8 - AC + Feed Cable, 8ft long AF10 - AC + Feed Cable, 10ft long	WH - White BK - Black SL - Silver	010S - 0-10V, 1% Dimming, 120/277V DALI - EldoLED, DALI protocol 2, DT-6, Log, 0.1% Dimming, 120/277V DMX - EldoLED, DMX, 0.1% Dimming, 120V/277V	NA - None CSMB - Casambi <sup>3</sup> AWN - Athena <sup>4</sup> MNOD - PIR Motion Sensor, Occupancy, Daylight Harvesting <sup>5</sup>

1 - TW04 Output is not available with 4ft length.  
2 - Tunable White output numbers are at representative of 4000K  
3 - CSMB with 010S/DALI drivers only.

4 - Awnr contact manufacture for build assistance - (MOD Only).  
5 - MNOD contact manufacturer for build assistance - (MOD Only).  
6 - Customizable configurations available, contact factory (MOD only).

CONTACT FACTORY FOR MORE OPTIONS.

## Dimensions



## Lens

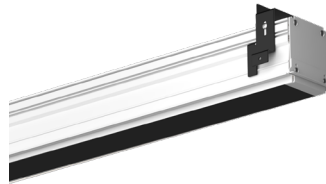
**F**  
Frosted Lens



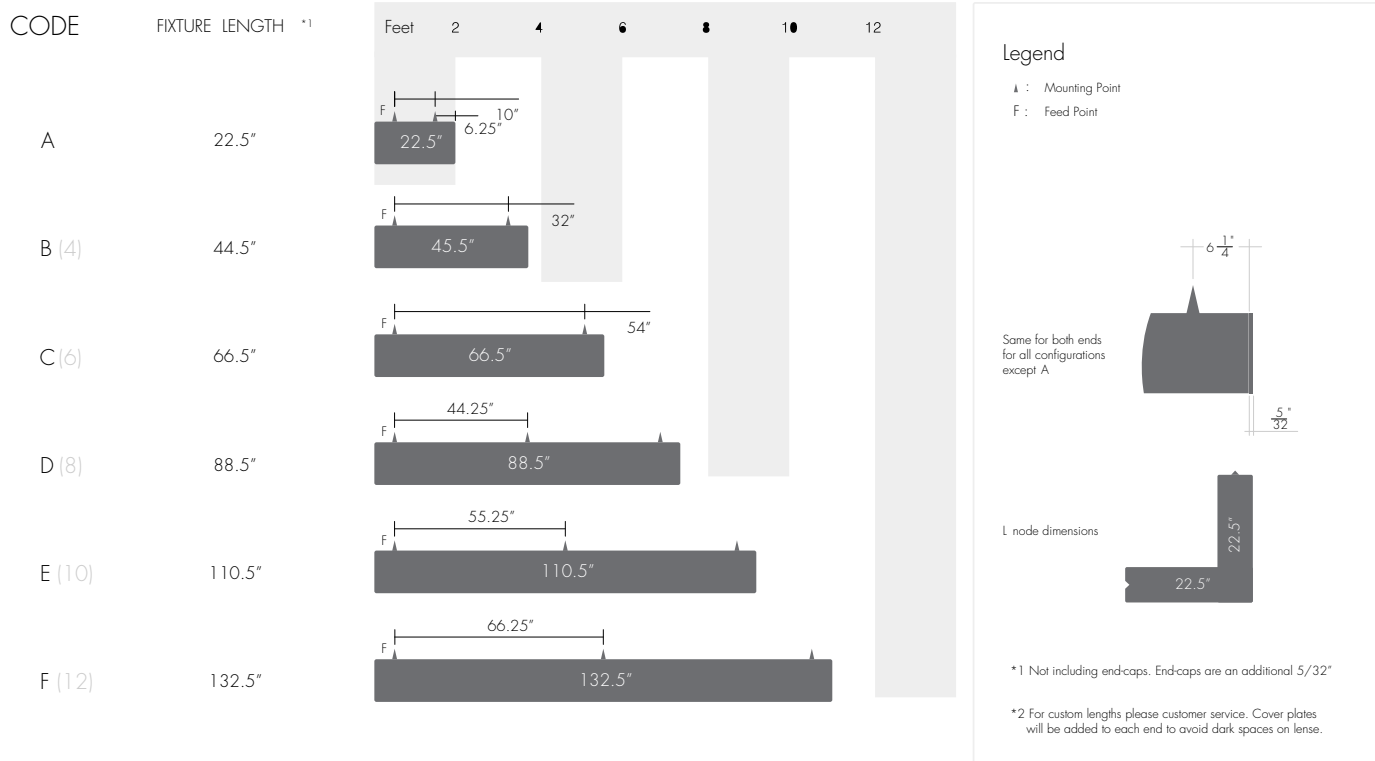
**AS**  
Asymmetric Lens



**BL**  
Black Lens



## Cut Lengths

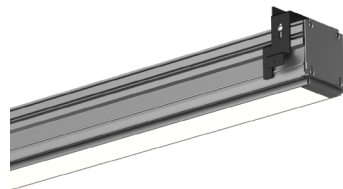
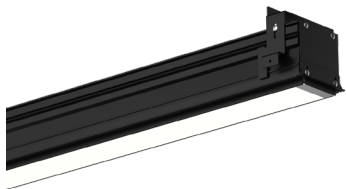


## Standard Finish

**BK**  
Black

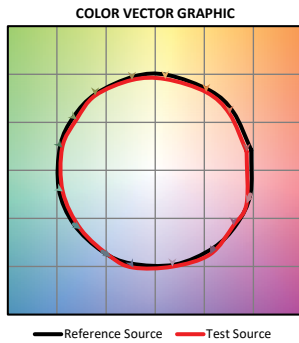
**WH**  
White

**SL**  
Silver

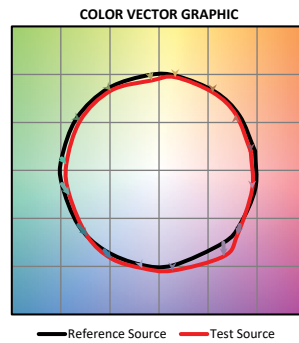


## TM-30

**Tunable White 2700K**



**Tunable White 6500K**



## Photometry

**Tunable White Down**

