



5" Linear Downlight shown with Louver

**Linear Downlight Features**

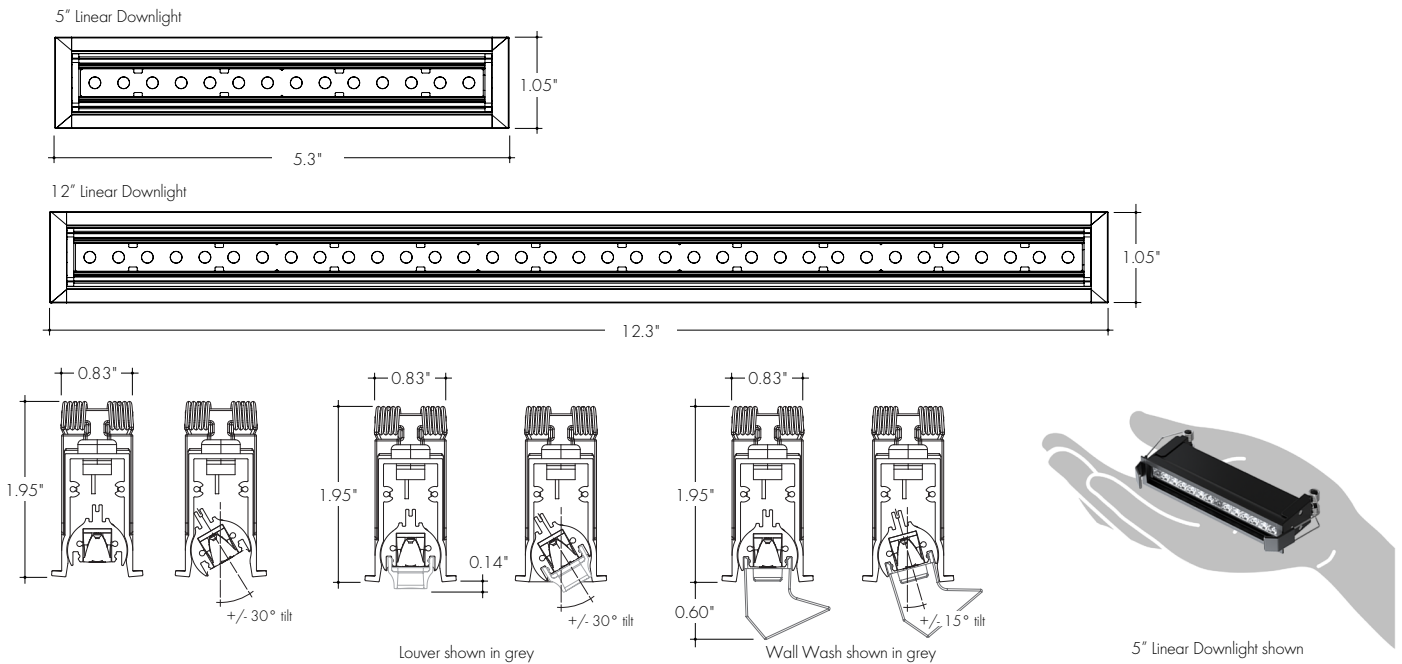
- Flawless beam quality from a unique micro-linear form factor
- Narrow 15° TIR native beam is aimable +/- 30°
- Louvers available for 15°, 30°, and 60° beams
- Snap-on optics available to easily adjust beam angle in the field
- Available in three sizes and outputs, four CCTs
- Tunable White range 1800K to 3500K
- Wall Wash optic provides even illumination starting from the top of the wall to the bottom
- For 0.5" to 2.0" ceiling thickness
- 24VDC Class 2
- L90 > 50K hours
- Wall Wash recommended spacing is 2ft from the wall and 2ft on-center
- Fixture is IC rated and does not require a housing or pan
- Dim to Warm curve (1800K - 2850K) available when used with Vintage Dim Power Supply. See Power Supply page for details.

**Finish Options**

Black Painted White Painted



**Profile Dimensions**



**Technical Information**

TYPE	Stenos		OPTIC	TRANSMISSION	TM-30				
	5	12			CCT	CRI	R <sub>f</sub>	R <sub>g</sub>	R <sub>9</sub>
<b>OUTPUT OPTIONS</b> (15° Optic)			15	100%					
<b>Lumen Output</b> (all channels full on)	442 lm	1072 lm	LV15	60%					
<b>Power Consumption</b>	5.4 W	13.0 W	LV30	65%					
<b>Efficacy</b> (lm/W)	82 lm/W	82 lm/W	LV60	50%					
<b>Center Beam Intensity</b> (candela)	2680 cd	6919 cd	WW	47%	1800K	95	93	99	83
			LU	35%	3500K	94	92	99	63
			EL	81%					

**Ordering Code | Linear Downlight**

MODEL	LENGTH	CCT	OUTPUT	OPTIC	FINISH
SD-Stenos Linear Downlight	5-5.3" 12-12.3"	18K35K-1800K 3500K	TWSO-Tunable White Standard	15-15° Optic LV15-15° Louver <sup>1</sup> LV30-30° Optic and Louver LV60-60° Optic and Louver WW-Wall Wash Optic <sup>2</sup> LU-15° Bullseye Louver <sup>3</sup> EL-15°x 45° Elliptical Lens <sup>4</sup>	BK-Black WH-White

1 - LV15° Louvers reduce glare while maintaining 90% of CBCP when compared to standard 15° optic.  
2 - Wall Wash Optic Not Available with SMD-3. Wall Wash Optic Only available in BK Black.  
3 - LU Bullseye Louver reduces glare while maintaining 75% of CBCP.  
4 - Only available in BK Black.

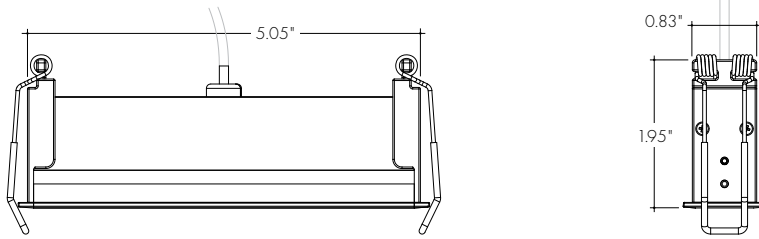
**Ordering Code | Linear Downlight Accessories**

MODEL	ACCESSORY	SIZE	FINISH
SAC-Stenos Accessory	LV15-15° Louver LV30-30° Optic and Louver LV60-60° Optic and Louver WW-Wall Wash Optic <sup>1</sup> LU-15° Bullseye Louver <sup>1</sup> EL-15°x 45° Elliptical Lens <sup>1</sup>	5-5.3" Linear Downlight 12-12.3" Linear Downlight	BK-Black WH-White

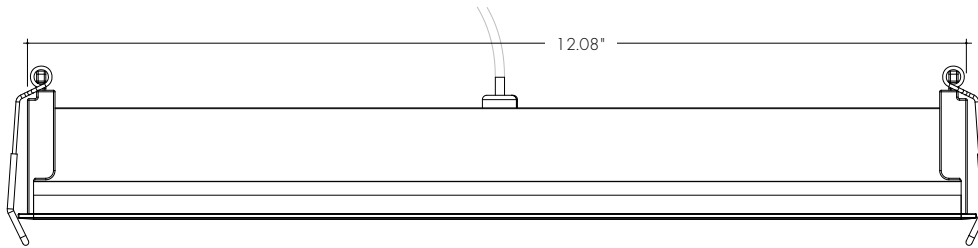
1 - WW Wall Wash Optic, LU Bullseye Louver, and EL Elliptical Lens only available in BK Black.

Linear Downlight Dimensions

SD-5



SD-12



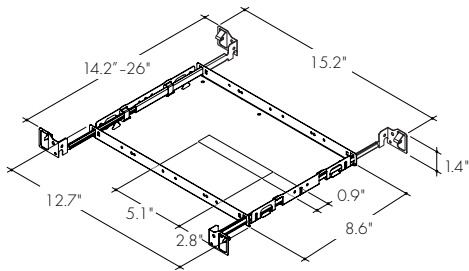
Installation Methods

Plaster Frame Bar Hanger Plate

- Galvanized steel construction with cut-out
- Hanger Bars included with PF, extendable from 14.2" to 26.0"
- RMP-12-TR trays can only be installed parallel to the ceiling joists

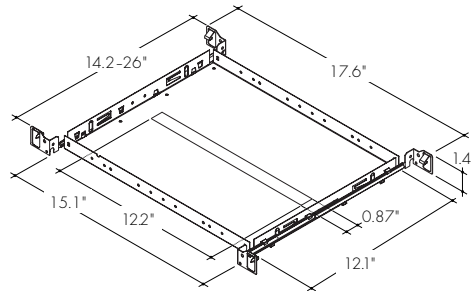
RMP-5-TR

New Construction Pan/Plaster Frame, 5"



RMP-12-TR

New Construction Pan/Plaster Frame, 12"

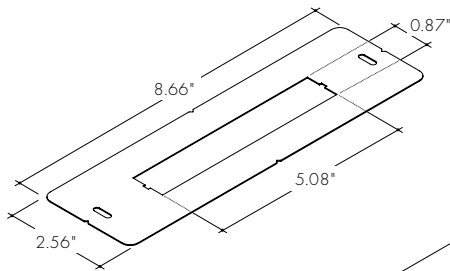


Remodel Install Plates

- Precision cutout to aid remodel installation

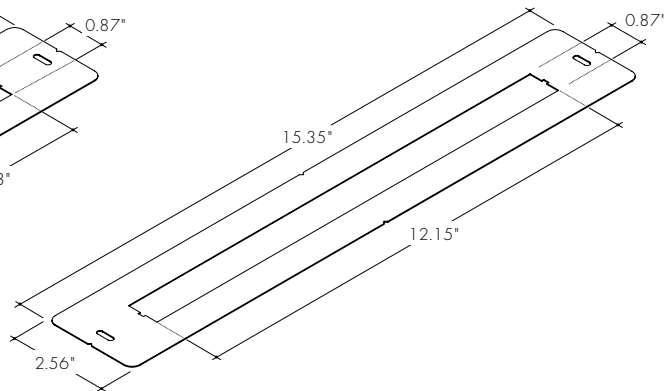
IP-SD-5

Remodel Cut-Out Template, 5"



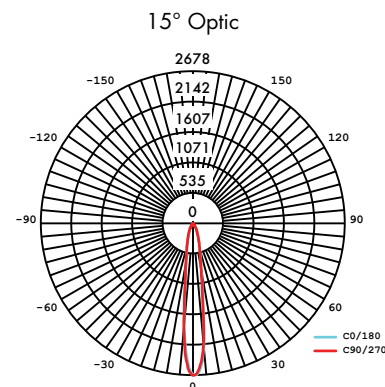
IP-SD-12

Remodel Cut-Out Template, 12"



Photometry

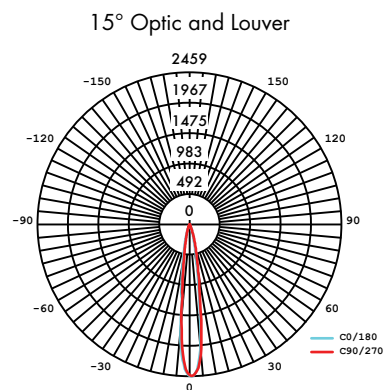
SD-5-30K-SO-15-BK/WH



SD-5-30K-SO-LV15-BK/WH



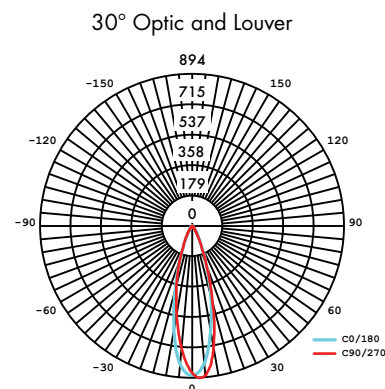
SAC-LV15-5-BK/WH



SD-5-30K-SO-LV30-BK/WH



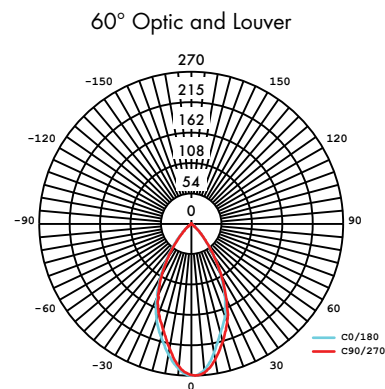
SAC-LV30-5-BK/WH



SD-5-30K-SO-LV60-BK/WH



SAC-LV60-5-BK/WH



Photometry

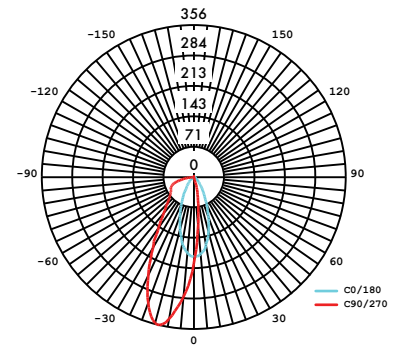
SD-5-30K-SO-WW-BK



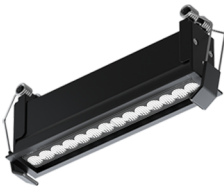
SAC-WW-5-BK



5" Wall Wash



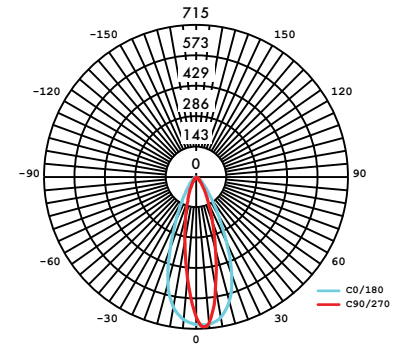
SD-5-30K-SO-EL-BK



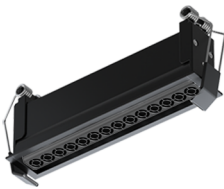
SAC-EL-5-BK



5" Elliptical Lens



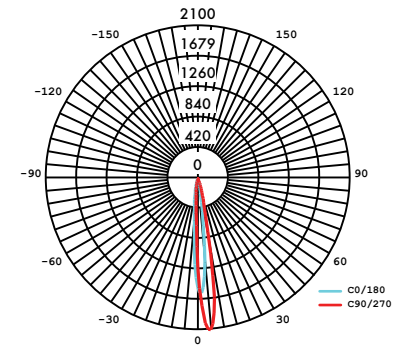
SD-5-30K-SO-LU-BK



SAC-LU-5-BK

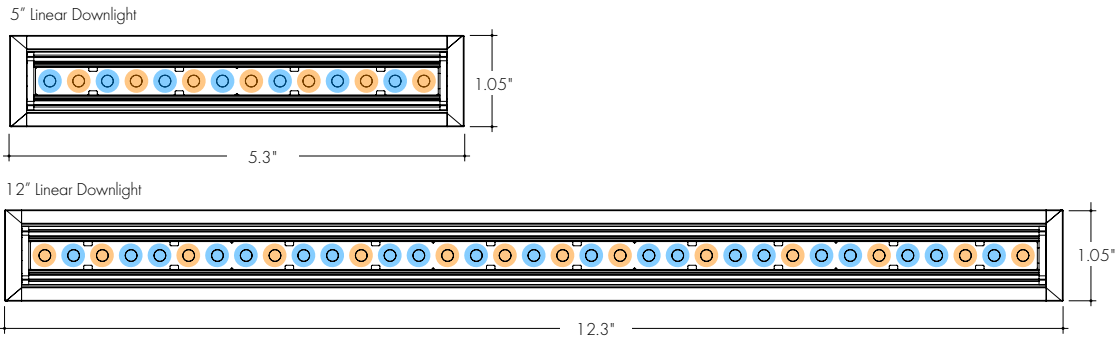


5" Bullseye Louver



Warm White (orange), Cool White (blue), colors exaggerated for clarity

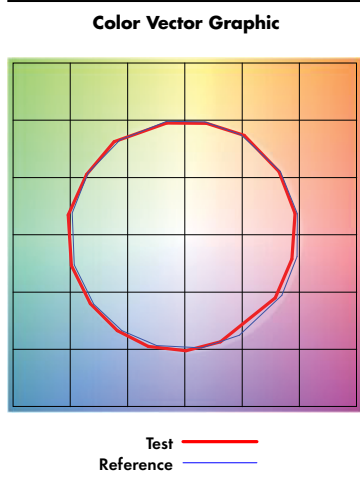
LED Arrangement



Warm White (orange), Cool White (blue), colors exaggerated for clarity

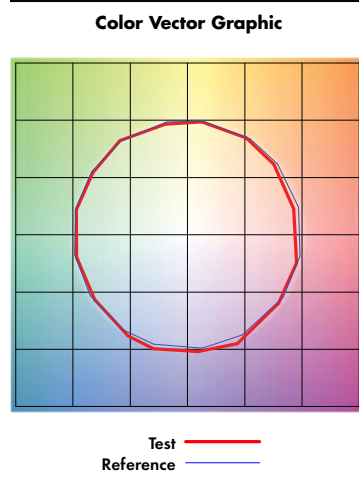
TM-30-15-Data

18K CCT



Graphic Shifts (%)			
Hue Bin	Rf	Chroma	Hue
1	94.8	-1.8%	0.7%
2	95.7	-0.8%	0.8%
3	94.5	1.2%	-2.4%
4	95.9	-1.1%	-1.8%
5	95.7	-1.4%	0.3%
6	93	1.6%	5.0%
7	97.2	0.3%	1.6%
8	93.7	3.0%	2.2%
9	95.1	2.4%	0.0%
10	94.2	2.2%	-2.0%
11	93	2.3%	-3.4%
12	88.1	2.1%	-7.1%
13	83.2	-0.1%	-13.9%
14	83	-4.5%	-16.9%
15	90.6	-3.6%	-4.9%
16	90.9	-4.0%	-3.0%

35K CCT



Graphic Shifts (%)			
Hue Bin	Rf	Chroma	Hue
1	90.9	-4.5%	-0.4%
2	93.4	-2.7%	1.7%
3	92.4	-1.2%	3.2%
4	95.7	-0.9%	1.2%
5	94.8	-1.6%	1.4%
6	96.9	1.0%	0.4%
7	95.8	-1.5%	-0.3%
8	97.3	-0.6%	0.9%
9	94.9	-1.4%	2.5%
10	91.4	-1.3%	4.7%
11	89.2	2.3%	5.9%
12	90.0	4.0%	0.7%
13	92.5	2.2%	-4.2%
14	88.2	3.6%	-7.8%
15	89.0	-0.5%	-6.6%
16	87.4	-1.6%	-6.6%

Power Supplies

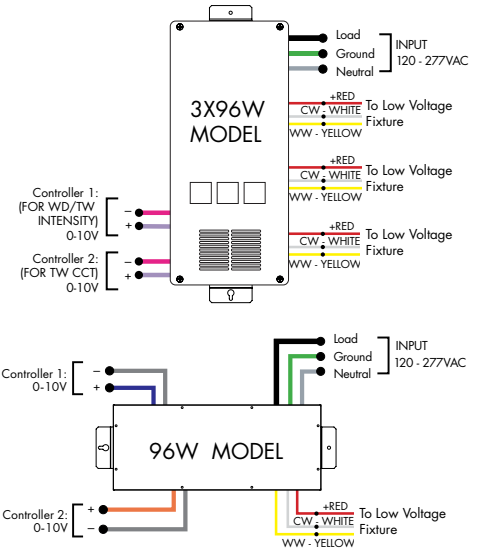
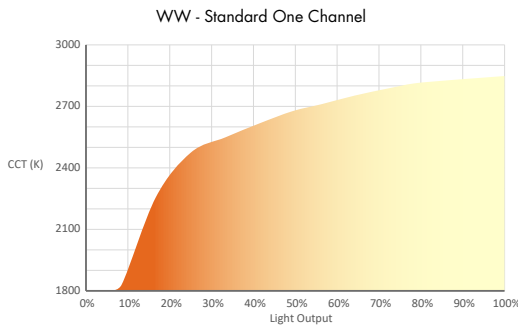
See fixture and power supply instructions & spec sheet for wiring information. Dimming possible in select models - view luminii website for list of compatible dimmers.

Ordering Code VintageDim<sup>®</sup> 0 - 10V Dimming Power Supplies 0.1% 120VAC - 277VAC

MODEL	INPUT CONTROL	ENVIRONMENT	WATTAGE	OUTPUT
PS - Power Supply, 120-277VAC	010V-WD - 0-10V Dimming (0.1%), Standard Warm Dim Curve (with Tunable White LED) 010V-TW - 0-10V Dimming (0.1%), Two Channel Control, Brightness and CCT1-CCT2 Ratio 010V-2CH - 0-10V Dimming (0.1%), Two Channel Control, LED1 Brightness and LED2 Brightness 010V-WDX - 0-10V Dimming (0.1%), Customizable Warm Dim Curve (with Tunable White LED) 010V-2CHX - 0-10V Dimming (0.1%), Two Channel Control, Customizable Brightness and CCT1-CCT2 Ratio	D-Dry	96 - 96 Watts 3X96 - 3x96 Watts <sup>1</sup>	24 - 24 VDC

1 - 3x96 is only available with input control options 010V-WD and 010V-TW  
2 - Athena only available on 96 watts option

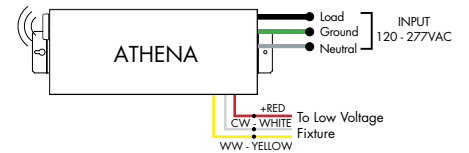
MODELS	96W	3X96
Length	14.40"	15.00"
Width	5.20"	6.62"
Depth	2.60"	4.56"



Athena 0-10V Warm Dim LED Driver

MODEL	INPUT CONTROL	ENVIRONMENT	WATTAGE	OUTPUT	FEATURE
PS - Power Supply, 120-277VAC	010V-WD - 0-10V Dimming, Standard Warm Dim Curve (with Dynamic White LED)	D-Dry	96-96 W	24-24 VDC	AWN-R-Athena

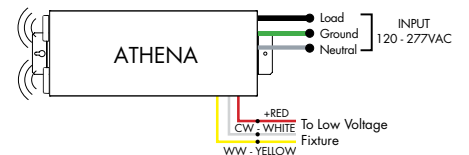
MODELS	96W
Length	14.40"
Width	5.20"
Depth	2.60"



Athena 0-10V Two Channel LED Driver

MODEL	INPUT CONTROL	ENVIRONMENT	WATTAGE	OUTPUT	FEATURE
PS - Power Supply, 120-277VAC	010V-2CH - 0-10V Dimming Two Channel Control, LED1 Brightness and LED2 Brightness	D-Dry	96-96 W	24-24 VDC	AWN-R-Athena

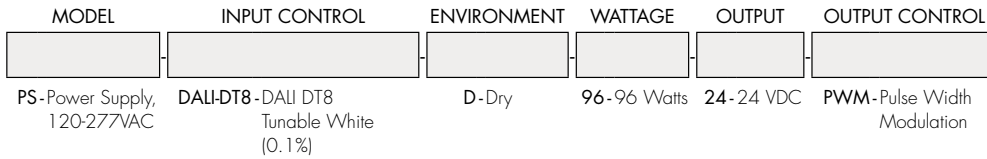
MODELS	96W
Length	14.40"
Width	5.20"
Depth	2.60"



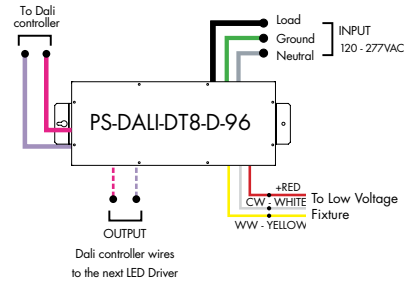
Power Supplies

See fixture and power supply instructions & spec sheet for wiring information. Dimming possible in select models - view luminii website for list of compatible dimmers.

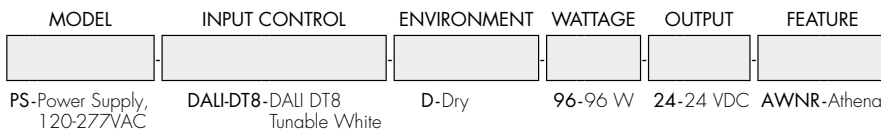
Ordering Code DALI2 Dimming Power Supplies 0.1% 120VAC - 277VAC



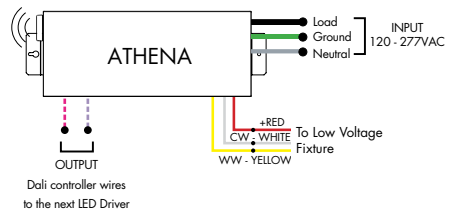
<b>MODELS</b>	<b>96W</b>
<b>Length</b>	14.40"
<b>Width</b>	5.20"
<b>Depth</b>	2.60"



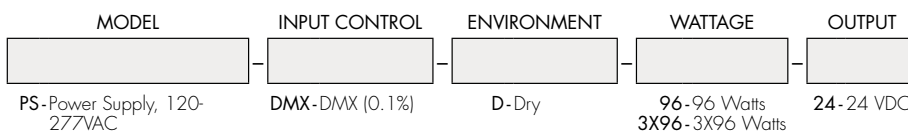
Athena DALI2-DT8 LED Driver



<b>MODELS</b>	<b>96W</b>
<b>Length</b>	14.40"
<b>Width</b>	5.20"
<b>Depth</b>	2.60"



Ordering Code DMX Dimming Power Supplies 0.1% 120VAC - 277VAC Requires Controller



<b>MODELS</b>	<b>96W</b>	<b>3X96</b>
<b>Length</b>	14.40"	15.00"
<b>Width</b>	5.20"	6.62"
<b>Depth</b>	2.60"	4.56"

