

Click [here](#) for installation details

# SOLO - Accent Spotlight Family

Discover Solo from Precision by Luminii, a comprehensive tool-kit of truly versatile adjustable spotlights, expertly engineered to deliver immaculate quality of light to your projects.

## Unmatched Versatility and Performance

Across 4 product sizes, the Solo family is able to deliver from 400 to over 3,000 lumens, colour rendition of up to CRI 98 (R9 of 95), and 2 SDCM colour binning for accurate and consistent white light across a whole project. With a range of static white light engines to choose from, Solo can deliver whatever lighting priorities your project demands, whether that's ultra narrow beams, boosted output, or increased energy efficiency

## Tunable White for Dynamic Environments

To address the needs of dynamic lighting scenarios, the Solo family comes ready with digitally controllable Tunable White light engine options across its whole range. Whether it's setting the mood in hospitality projects, or balancing the tone in a gallery space, we offer both 1800 to 3000K, and 2700 to 5000K tuning ranges to cater for the vast majority of project needs.

## Adaptability On-Site

Each member of the Solo family has been designed to allow tool-less field-changeable optics and optical accessories. This facilitates real-time adjustments in-situ, without downtime. Solo is also compatible with Stucchi Multisystem 48V track, a highly versatile architectural track system that allows for effortless reconfiguration and repositioning of fixtures to satisfy changing spatial requirements.

## Quality Craftmanship, Superior Light

The Solo family has been crafted to deliver pristine quality light. Our meticulously developed light engines eliminate striations and colour inconsistencies, ensuring clean, controlled beams that meet the highest standards of visual comfort and aesthetic appeal.



**Solo 8**  
**Surface**



**Solo 8**  
**Stucchi**



**Solo 11**  
**Surface**



**Solo 11**  
**Stucchi**



**Solo 16**  
**Surface**



**Solo 16**  
**Stucchi**



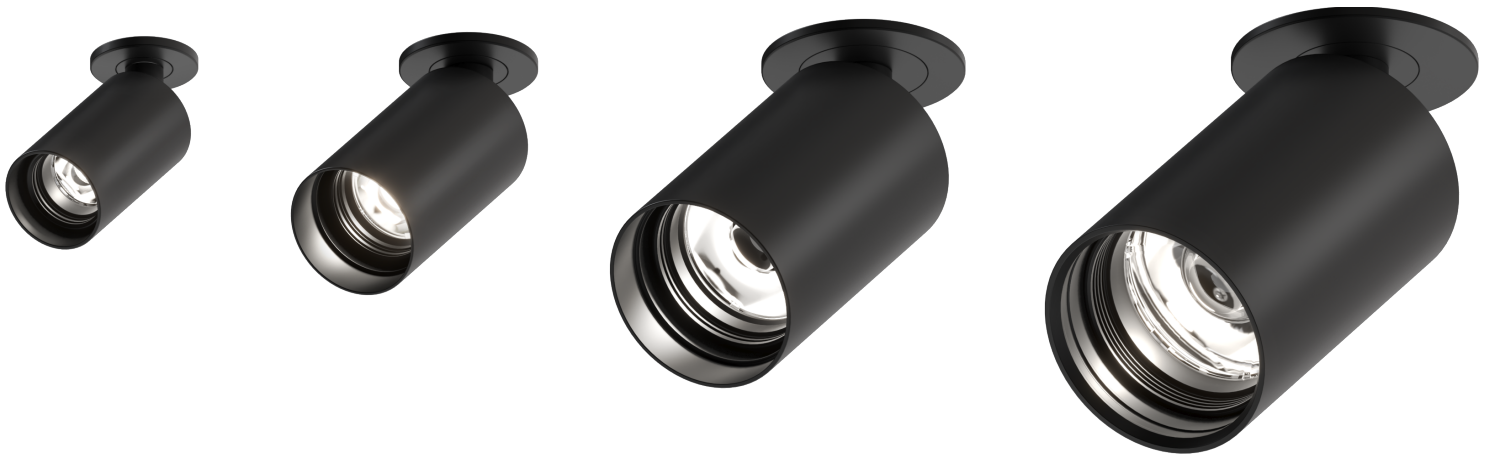
**Solo 20**  
**Surface**



**Solo 20**  
**Stucchi**



**CONTACT US:** [RCLPLLSALES@LUMINII.COM](mailto:RCLPLLSALES@LUMINII.COM)  
**CONTACT A LOCAL AGENT:** [LUMINII.COM/FIND-AN-AGENT/](http://LUMINII.COM/FIND-AN-AGENT/)  
**VISIT PRECISION:** [PRECISIONLIGHTING.CO.UK](http://PRECISIONLIGHTING.CO.UK)



## SOLO - Light Engine Selection

Select from Precision's three consciously engineered Static White light engines to best suit your project or application needs.

### ▸ intense ◀

Precision's signature intense light engines offer tight, surgical beams combined with the highest peak intensity values available.

- + Solo 11, 16, & 20
- + Ultra-Tight Beams
- + High Peak Cd

### plus+

Precision's Plus light engines offer the best balance between delivered lumens, beam quality and outstanding colour rendition.

- + Solo 8, 11, 16, & 20
- + Increased Lumen Output
- + CRI 98 Typical

### HE

Precision's Extra High Output light engines deliver the highest possible lumen values as well as outstanding energy efficiency

- + Solo 20
- + Maximum Lumen Output
- + Maximum Energy Efficiency

## Lifetime & Environmental

At Precision, we design our products with longevity in mind. Our light fixtures feature modular, reusable components, allowing for easy servicing and repairs throughout their lifespan. When they reach the end of their useful life, they can be reworked into new products. We prioritise the use of recyclable materials in both our products and packaging, and encourage our customers to dispose of materials responsibly.

### Compliance with Regulations

All Solo products meet Part L1A/L1B (dwellings) and Part L2A (display) standards.

### TM65 Embodied Carbon

All Solo product have a unique TM65 value, based on material content and processing; the embodied carbon for each product is published in individual spec sheets.

### TM66 Average Value

TM66 varies slightly per product but averages 2.4 across the entire Solo product portfolio.



Follow our Socials

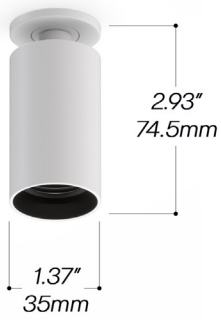


**UK OFFICE:** 42 Riverside Road, London,  
United Kingdom SW17 0BA

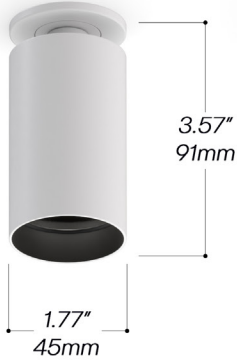
**PH:** 020 8947 6616

precision  
by luminii

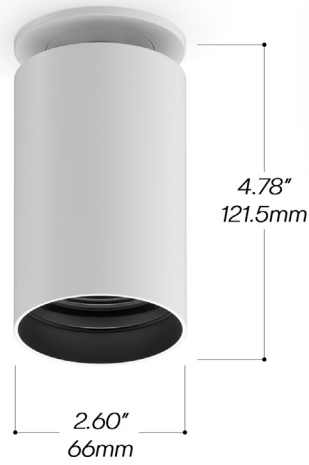
SOLO 8



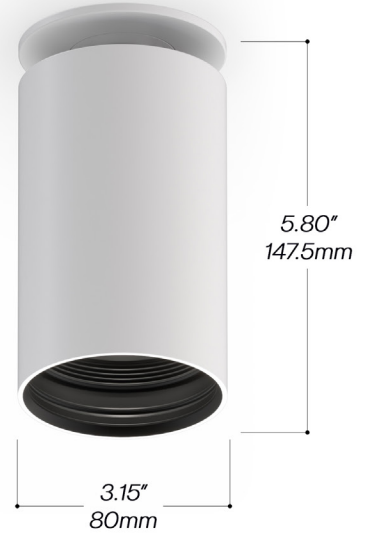
SOLO 11



SOLO 16



SOLO 20



# SOLO - Adjustable Spotlight Range

SOLO was meticulously crafted to deliver pristine light quality. Our advanced light engines eliminate striations and colour inconsistencies, ensuring clean, controlled beams that meet the highest standards of visual comfort and aesthetic appeal.

**Mounting Options:** Fixed & Adjustable

**CRI and R9 Values:** Ultra-high

**Variants:** Standard, Pro, Tunable White

**CCT Options:** 2400K, 2700K, 3000K, 4000K

**Rotation:** 360° Lockable Pan

**Beam Quality:** Clean & Controlled

**Tilt:** 90°

**Finishes:** Black, White, Brushed Aluminum, Rubbed Bronze, Polished Brass, Brushed Brass

**Optics:** Optical Accessories Available

**Lumen Output:** SOLO 8 (up to 460 lm), SOLO 11 (up to 700 lm), SOLO 16 (up to 1100 lm), SOLO 20 (over 3000 lm)

**Certifications:** IP20, ROHS, CE, UKCA

**Warranty:** 5 years

## About Precision by Luminii

Precision by Luminii, acquired in 2021, combines a rich heritage with innovative design to deliver exceptional commercial lighting solutions. We are dedicated to pushing the boundaries of architectural lighting and ensuring customer satisfaction.

For more information on the SOLO and to explore our complete collection, visit [www.luminii.com](http://www.luminii.com) or contact our sales representatives at [rcpllsales@luminii.com](mailto:rcpllsales@luminii.com)

*Elevate your space with SOLO by Precision – Where Precision meets Perfection*



Follow our Socials



**UK OFFICE:** 42 Riverside Road, London, United Kingdom SW17 0BA

**PH:** 020 8947 6616

precision  
by luminii