

Features

The SLW36 Channel is a linear aluminum extrusion that has been designed to fit many high output LED lighting needs. The wide profile design can accommodate larger LED strips making the SLW36 extrusion ideal for bright general lighting applications. Substantial aluminum mass in profile provides excellent heat sink and physical protection for high power LEDs. Extrusion and lens are field-cuttable.

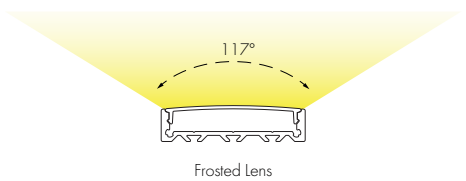
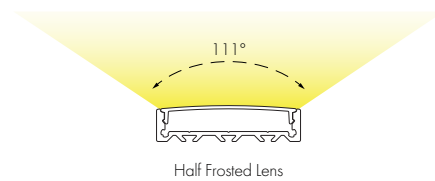
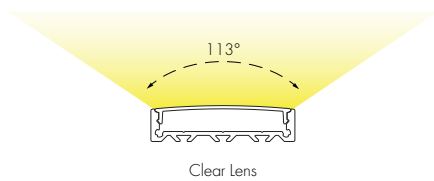
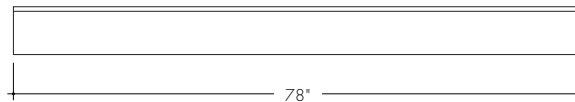
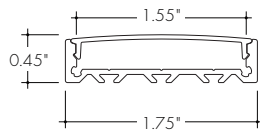
Finish
Silver anodized

Warranty
7 Years

Diffuser Lens
Polycarbonate, snap-in-place, UV resistant

Declare.

Product Dimensions



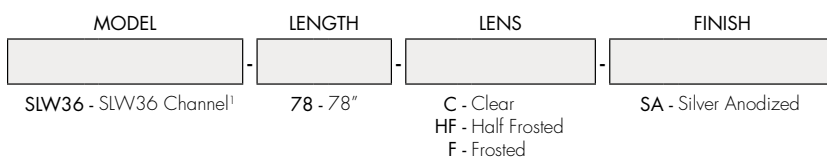
Lens Options	
Actual Length	- 78"
Available Lenses	- Clear - Half Frosted - Frosted

TRANSMISSION PERCENTAGE
(COMPARED TO LED TAPE WITHOUT CHANNEL)

LENS	TRANSMISSION %
Clear Lens	86%
Half Frosted Lens	72%
Frosted Lens	62%

See LED tape spec sheet for lens dotting characteristics & compatibility

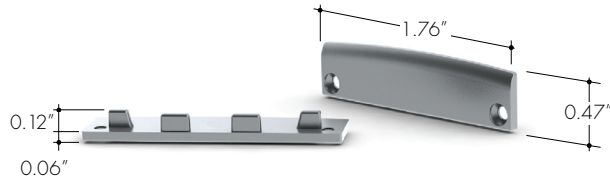
Ordering code



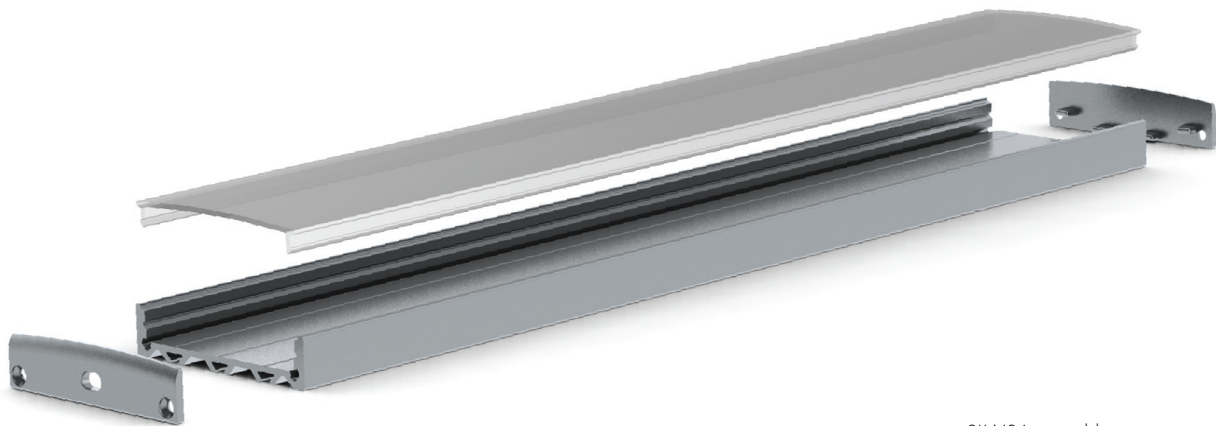
Accessories

All accessories sold separately.

EC-SLW36-H1
End Cap



EC-SLW36-H2
End Cap with Powerfeed Opening



SLW36 assembly