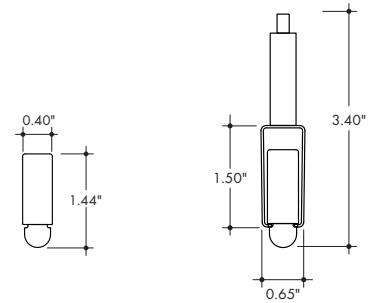


Plexineon Rings Suspended Mount

RGB, RGBW and RGBW Pixel



- Easy to install, for interior accent lighting
- Neon look providing a crisp, clear line of light visible for miles
- Mounting Clips and aircraft cable are included in the appropriate quantities
- Operating Temperature: -40° F to 140° F (-40° C to 60° C)
- 24VDC Class 2
- IK10 and 3G rated
- 5 year warranty indoor



Without Mounting Clip

With Mounting Clip and A/C hardware



Technical Information

RING OUTER DIAMETER* (inch)		Plexineon RGB	Plexineon RGBW	Plexineon Pixel RGBW
EFFICACY		17.5 lm/W	17.1 lm/W	14.7 lm/W
Ø36 (Ø3ft)	Lumen Output	679 lm	792 lm	792 lm
	Power Consumption	38.6 W	46.2 W	53.7 W
Ø72 (Ø6ft)	Lumen Output	1357 lm	1583 lm	1583 lm
	Power Consumption	77.2 W	92.3 W	107.4 W
Ø144 (Ø12ft)	Lumen Output	2714 lm	3166 lm	3166 lm
	Power Consumption	154.6 W	184.7 W	214.9 W
Ø288 (Ø24)	Lumen Output	5429 lm	6333 lm	6333 lm
	Power Consumption	309.1 W	369.5 W	429.8 W

RGBW (3000K)				
Model	CRI	TM-30		
		R _f	R _g	R _g
RGBW	85	84	98	22
RGBW-PXSPI	85	84	98	22

Dominant Wavelength	
Color	RGB
Red	622nm
Green	525nm
Blue	468nm

All channels full on.

*Rings will be made of equal sections no longer than 96" arc length. Rings exceeding 96W will have allowances for additional power feeds.

Ordering Code

MODEL	RING DIAMETER ¹	RING TYPE	CCT	OUTPUT	LENS	MOUNTING ²	FINISH	POWERFEED POSITION/TYPE
PX - Plexineon	____ - Ring Outer diameter in inches, 6"-288" (24ft)	HR - Horizontal Ring	RGB - RGB RGBW - RGBW (3000K) RGBW-PXSPI - RGBW Pixel Control (3000K)	SO - Standard	F - Frosted	SP - Suspension Mount, Standard Clips SPD - Suspension Mount, Decorative Clips ³	GG - Gloss Grey BK - Matte Black GY - Matte Grey WH - Matte White	B-4 - Male Quick Connect One End, Female Quick Connect Other End

1. Rings will be made of equal sections no longer than 96" arc length. Tolerance on size of diameter is +/- 1".
 2. 2 mounting clips included for every 12" of diameter, with a minimum of 3 clips.
 3. Standard mounting clip come with stainless steel finish. Decorative Clips match the fixture finish.

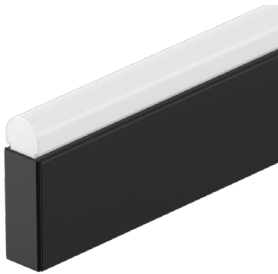
Plexineon Rings Suspended Mount

RGB, RGBW and RGBW Pixel



Finish Options

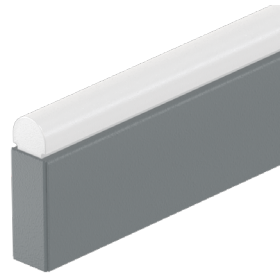
BK
Matte Black Finish



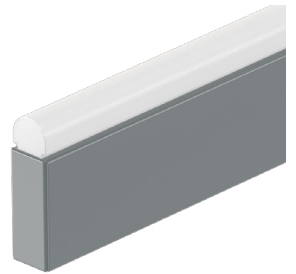
WH
Matte White Finish



GY
Matte Grey Finish



GG
Gloss Grey Finish

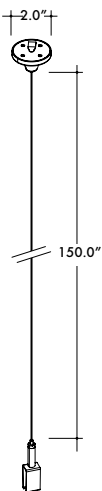


Suspension Hardware

- Suspension Hardware is included with Plexineon runs in the appropriate quantity, every 30" of linear/arc length
- Standard Clips have a stainless steel finish, Decorative Clip finishes match the fixture finishes
- Canopy Finishes come in White.

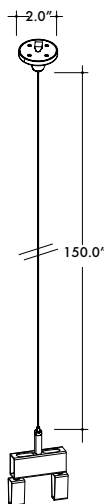
SP/SPD

SC-1MP2-SCL
Suspension Kit with Single Clip,
Ø2.0" canopy, 150" A/C Cable



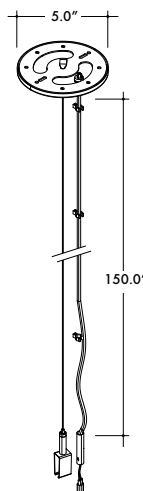
Used approximately every 30" of linear/arc length for Standard Clips and every 18" of linear/arc length for Decorative Clips

SC-1MP2-DCL
Suspension Kit with Joiner Clip,
Ø2.0" canopy, 150" A/C Cable



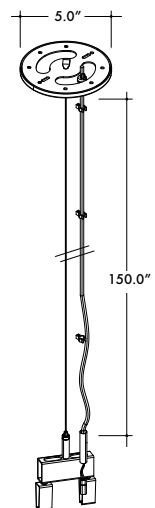
Use to join two fixtures together in the middle of a Suspended Run

SC-1FC5-SCL
Powerfeed Canopy Suspension Kit with
Single Clip, Ø5.0" canopy, 150" A/C Cable






Used at the start of every Suspended Run

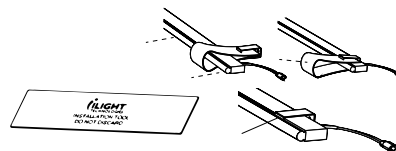
SC-1FC5-DCL
Powerfeed Canopy Suspension Kit with Joiner
Clip, Ø5.0" canopy, 150" A/C Cable



Used to join two fixtures together and to drop power in the middle of a Suspended Run

OX	Clip Finish	Canopy Finish
00	 Stainless Steel	<input type="checkbox"/> White
01	 Matte Black	<input type="checkbox"/> White
02	 Matte Grey	<input type="checkbox"/> White
03	<input type="checkbox"/> Matte White	<input type="checkbox"/> White

70-TOL02-001-01
Mounting Clip Installation Tool



Use for installation of Plexineon into Mounting Clips

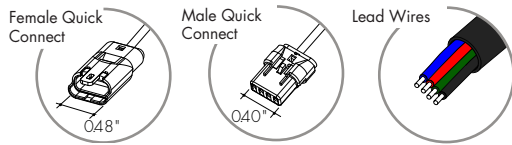
Plexineon Rings Suspended Mount

RGB, RGBW and RGBW Pixel



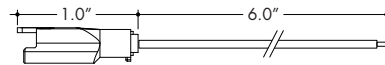
Powerfeed and Connectors

For use with RGB



60-SJ-C4-0002-01

Female RGB Quick Connect with 6" flying leads



Female Quick Connect with flying leads can be connected to the Power Supply at the start of a run. Can also be used with the Male Quick Connect to make wire jumpers.

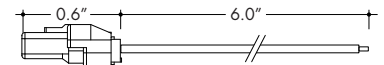
Also available with longer Flying Leads

60-SJ-C4-0004-01

Female RGB Quick Connect with 384" flying leads

60-SJ-C4-0001-01

Male RGB Quick Connect with 6" flying leads



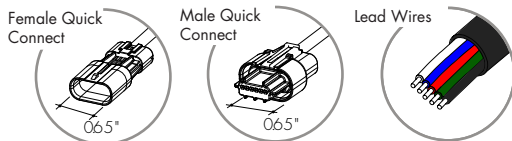
Male Quick Connect with flying leads can be used to make wire jumpers.

Also available with longer Flying Leads

60-SJ-C4-0003-01

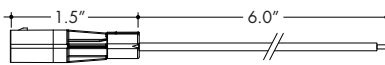
Male RGB Quick Connect with 384" flying leads

For use with RGBW



60-SJ-C5-0002-01

Female RGBW Quick Connect with 6" flying leads



Female Quick Connect with flying leads can be connected to the Power Supply at the start of a run. Can also be used with the Male Quick Connect to make wire jumpers.

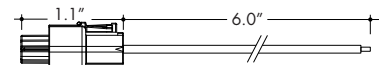
Also available with longer Flying Leads

60-SJ-C5-0004-01

Female RGBW Quick Connect with 384" flying leads

60-SJ-C5-0001-01

Male RGBW Quick Connect with 6" flying leads



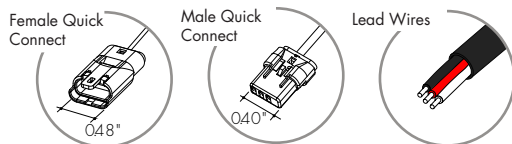
Male Quick Connect with flying leads can be used to make wire jumpers.

Also available with longer Flying Leads

60-SJ-C5-0003-01

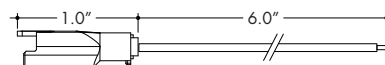
Male RGBW Quick Connect with 384" flying leads

For use with Pixel



60-SJ-C3-0002-01

Female Pixel Quick Connect with 6" flying leads



Female Quick Connect with flying leads can be connected to the Power Supply at the start of a run. Can also be used with the Male Quick Connect to make wire jumpers.

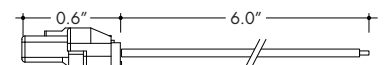
Also available with longer Flying Leads

60-SJ-C3-0006-01

Female Pixel Quick Connect with 384" flying leads

60-SJ-C3-0001-01

Male Pixel Quick Connect with 6" flying leads



Male Quick Connect with flying leads can be used to make wire jumpers.

Also available with longer Flying Leads

60-SJ-C3-0005-01

Male Pixel Quick Connect with 384" flying leads

60-SJ-C3-0008-01

Female Pixel Quick Connect with 120" flying leads

60-SJ-C3-0007-01

Male Pixel Quick Connect with 120" flying leads

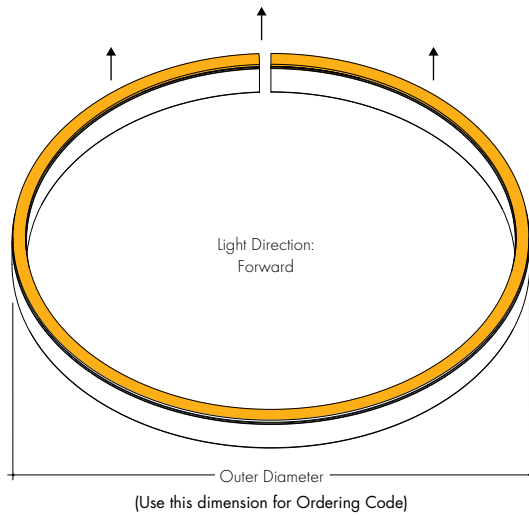
Plexineon Rings Suspended Mount

RGB, RGBW and RGBW Pixel



Ring Types

HR
Horizontal Ring

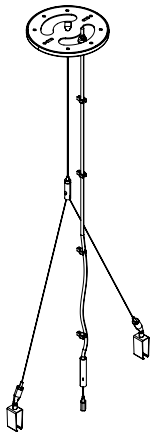


Additional Material

- Ordered separately.

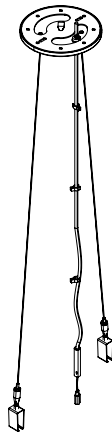
CC-2MF-190-SCL

Powerfeed Canopy Suspension Kit with Cross Cable and 2 Single Clips Ø5.0" canopy 150" A/C Cable



CC-2MF-150-SCL

Powerfeed Canopy Suspension Kit with 2 Cables and Single Clips Ø5.0" canopy 150" A/C Cable



SC-2FC5-DCL

Dual Powerfeed Canopy Standard or Decorative Joiner Clips 150" A/C Cable



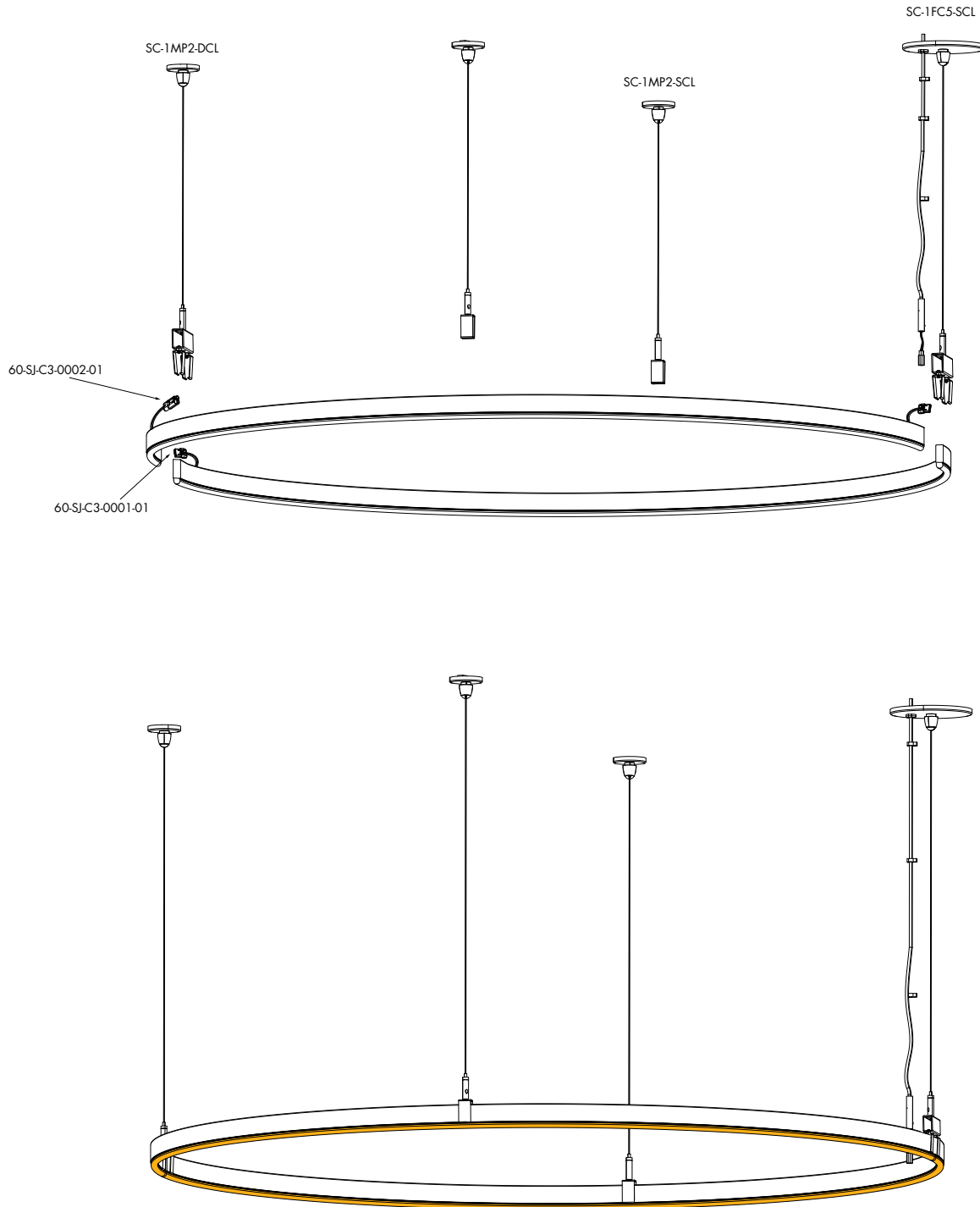
Plexineon Rings Suspended Mount

RGB, RGBW and RGBW Pixel



Sample Layout

PX-48-HR-RGBW-PXSPI-SO-F-SP-GG-B-PFC
Plexineon Horizontal Ring, Suspended Mounting Clips



Plexineon Rings Suspended Mount

RGB, RGBW and RGBW Pixel



Power Consumption

Tested at Full Power with PS-UNI Series power supplies.

Standard Nominal Lengths offered provide minimal shadowing. For alternate lengths, please consult Inside Sales with specific request.

RGB

Nominal Diameter (in)	Watts	Nominal Length (in)	Watts
12	12.8	217	236.8
24	26.2	222	242.4
36	39	227	246.4
48	52.4	232	252.8
60	64.4	237	257.6
72	78.6	242	257.6
84	90.9	244	266.4
96	104.8	250	272.7
156	170.4	256	277.2
159	173.4	261	284.4
163	177.6	267	289.8
167	181.8	273	289.8
171	184.8	272	296
174	189.6	278	303
178	193.2	284	308
182	193.2		
181	198.8		
186	202.3		
190	207.2		
195	212.1		
199	215.6		
203	221.2		
208	225.4		
212	225.4		

RGBW

Nominal Length (in)	Watts
12	17.1
24	34.6
36	51.8
48	69.2
72	103.8
84	116.1
96	138.4
120	173
159	224.4
167	232.2
174	242.4
182	253.2
177	250.6
186	261.8
195	270.9
203	282.8
212	295.4
222	309.6
232	323.2
242	337.6
239	336.6
250	348.3
261	363.6
273	379.8
265	374
278	387

PIXEL

Nominal Length (in)	Watts	Pixel Qty
12	17.5	9
24	36.2	19
36	53.8	28
48	72.4	38
72	108.6	57
84	125.1	66
96	144.8	76
120	181	95
159	240	126
167	250.2	132
174	261.6	138
182	271.2	144
177	266.7	140
186	280	147
195	291.9	154
203	305.2	161
212	316.4	168
222	333.6	176
232	348.8	184
242	361.6	192
239	360	189
250	375.3	198
261	392.4	207
273	406.8	216
265	400	210
278	417	220



Voltage Drop Calculator

The below chart assumes nominal voltage of 24 Volts and a Voltage Drop Allowance of 3% through the wire

Wattage [W]	Maximum Wire Length From Power Supply to Start of Run [ft]						
	12 AWG	14 AWG	16 AWG	18 AWG	20 AWG	22 AWG	24 AWG
5	1088.2	684.4	430.3	270.6	170.2	107.1	67.3
10	544.1	342.2	215.1	135.3	85.1	53.5	33.7
15	362.7	228.1	143.4	90.2	56.7	35.7	22.4
20	272.0	171.1	107.6	67.7	42.6	26.8	16.8
25	217.6	136.9	86.1	54.1	34.0	21.4	13.5
30	181.4	114.1	71.7	45.1	28.4	17.8	11.2
35	155.5	97.8	61.5	38.7	24.3	15.3	9.6
40	136.0	85.5	53.8	33.8	21.3	13.4	8.4
45	120.9	76.0	47.8	30.1	18.9	11.9	7.5
50	108.8	68.4	43.0	27.1	17.0	10.7	6.7
55	98.9	62.2	39.1	24.6	15.5	9.7	6.1
60	90.7	57.0	35.9	22.6	14.2	8.9	5.6
65	83.7	52.6	33.1	20.8	13.1	8.2	5.2
70	77.7	48.9	30.7	19.3	12.2	7.6	4.8
75	72.5	45.6	28.7	18.0	11.3	7.1	4.5
80	68.0	42.8	26.9	16.9	10.6	6.7	4.2
85	64.0	40.3	25.3	15.9	10.0	6.3	4.0
90	60.5	38.0	23.9	15.0	9.5	5.9	3.7
96	56.7	35.6	22.4	14.1	8.9	5.6	3.5

Plexineon Rings

Suspended Mount

RGB, RGBW and RGBW Pixel

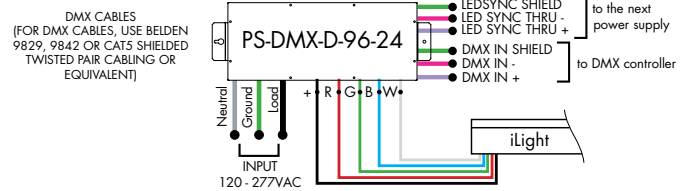
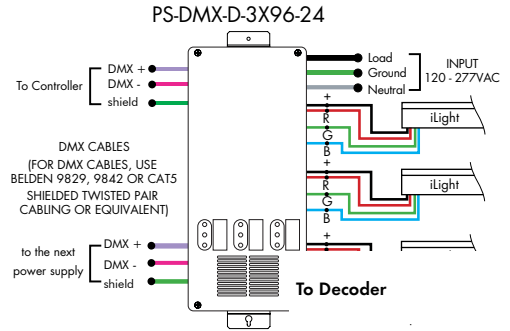
Power Supplies

See fixture and power supply instructions & spec sheet for wiring information. Dimming possible in select models - view Luminii website for list of compatible dimmers.

Ordering Code DMX Dimming Power Supplies 0.1% 120VAC - 277VAC Requires Controller

MODEL	INPUT CONTROL	ENVIRONMENT	WATTAGE	OUTPUT
PS-Power Supply, 120-277VAC	DMX-DMX (0.1%)	D-Dry	96-96 Watts 3X96-3X96 Watts	24-24 VDC

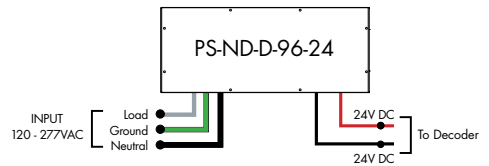
MODELS	96W	3X96
Length	14.40"	15.00"
Width	5.20"	6.62"
Depth	2.60"	4.56"



Ordering Code Non-Dimming Power Supply 120VAC - 277VAC Requires Controller and Decoder

MODEL	INPUT CONTROL	ENVIRONMENT	WATTAGE	OUTPUT
PS-Power Supply, 120-277VAC	ND-Non Dimming	D-Dry	96-96 Watts	24-24 VDC

MODELS	96W
Length	14.40"
Width	5.20"
Depth	2.60"

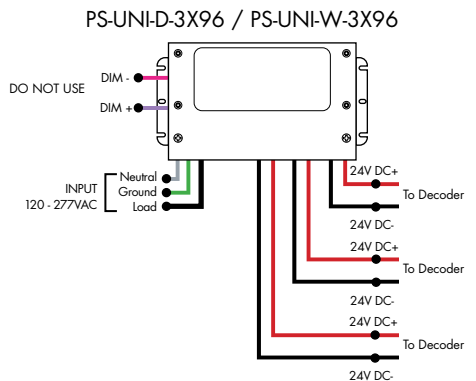
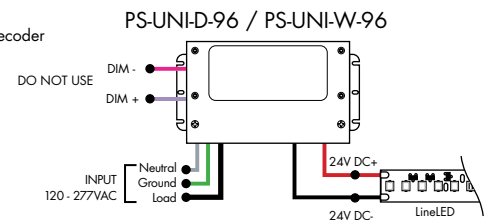


Ordering Code Universal Dimming Power Supplies 1% 120VAC - 277VAC Requires Controller and Decoder

MODEL	INPUT CONTROL	ENVIRONMENT	WATTAGE	OUTPUT
PS-Power Supply, 120-277VAC	UNI-0-10V Dimming, Phase Dimming	D-Dry W-Wet	30-30 Watts 60-60 Watts 96-96 Watts 3x96-3x96 Watts	24-24 VDC

Compatibility: View a complete list of compatible dimmers on product page [\(Link\)](#)

0-10V - 1% dimming
MLV/ELV/TRIAC - 1% dimming, consult dimming compatibility chart



MODELS	PS-UNI-W-30W	PS-UNI-W-60W	PS-UNI-W-96W	PS-UNI-W-3X96W
Length	6.50"	7.40"	8.66"	11.85"
Width	3.73"	3.73"	3.73"	4.32"
Depth	1.61"	1.61"	1.61"	1.81"

MODELS	PS-UNI-D-30W	PS-UNI-D-60W	PS-UNI-D-96W	PS-UNI-D-3X96W
Length	8.77"	8.77"	8.11"	9.94"
Width	4.27"	4.27"	5.60"	7.61"
Depth	1.83"	1.83"	1.83"	2.02"

Plexineon Rings Suspended Mount

RGB, RGBW and RGBW Pixel

Controllers and Decoders



MODEL

RGBW-RC-R

RGBW-RC-R - RGBW receiver

The RGBW receiver is easily paired with controller by the click of a button. Receiver can be reset to factory settings at any time.

Each receiver can store one static RGB color, one color sequence, and one brightness setting for the white LED strip. Receivers assigned to the same scene within the same zone will have the same LED static color and color sequence.

Operating Voltage
12-36 VDC

Power Capacity
up to 96W at 24V

Operating Temperature Range
from -4°F to +122°F in case



MODEL

RGBW-SR

RGBW-SR - RGBW signal repeater

Extends identical signal when connected in series to an RGBW LED control system. The RGBW signal repeater works with Luminii RGB and RGBW controllers, receivers, and decoders.

RGBW signal can be extended indefinitely when adequate power supply (not included) is connected to the system.

Operating Voltage
12-36 VDC

Power Capacity
up to 96W at 24V

Operating Temperature Range
from -4°F to +122°F in case



MODEL

DDMX-RGBW

DDMX-RGBW - DMX decoder

Translates controller DMX512 programs for RGB and white LED strips.

Unique DMX address for the decoder can be set easily and displayed by the numeric display on the case. Changing and resetting the DMX address requires manual input.

Use power repeater to expand output.

Operating Voltage
12-36 VDC

Power Capacity
up to 96W at 24V

Operating Temperature Range
from -4°F to +122°F in case

Plexineon Rings Suspended Mount

RGB, RGBW and RGBW Pixel



Controllers and Decoders



MODEL

RGBW-MC3

RGBW-MC3-4-zone RGBW controller

Easy to operate wireless interface suitable for static or color changing scenes. Control 4 different color zones separately or at the same time. RGBW receiver (RGBW-RC-R) required for operation. Assign multiple receivers per zone to cover a large area.

Color wheel enables highly stable and sensitive color control functionality. Create your own color changing sequences with ease and flexibility.

Power

qty 3 AAA batteries

Scenes

up to 4 unique zones

Signal

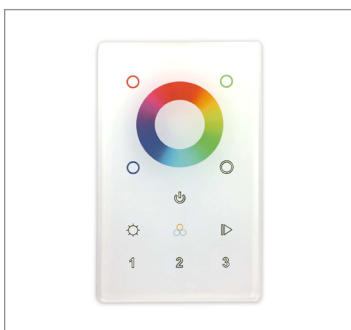
Wireless (RF)

Energy Saving

Deactivates after 10 seconds of inactivity

Color Parameters

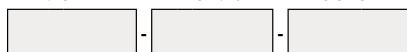
- Brightness
- Saturation
- Primary colors
- Speed of color changing sequence
- Fading



MODEL

ZONES

COLOR



DMX - DMX
Controller

3Z - Three Zone
1Z - One Zone

RGBW - Red,
Green,
Blue, &
White

DMX /Wireless RGB-W wall-mount controller controls DMX lighting fixtures, wireless control of RGB-W lighting fixture or use both simultaneously. Fits in any standard US switch box. Includes all the outputs in the back of the controller.

Control brightness levels with a single touch, personalize and memorize 3 different scenes, and even create 3 variations of white.

Features

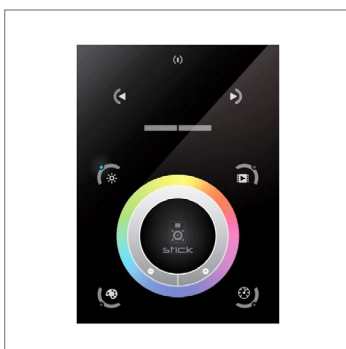
- 2 in 1 in-Wall Controller: DMX Control or Wireless RGB-W
- 65,000 Color Options, Dimming and Speed Control
- Memory Function
- 50 Foot Wireless Range
- Easily Fits Standard US Switch Boxes
- Touch Sensitive Glass Surface
- Includes 10 Built in Programs, or Create and Play Your Own

Operating Voltage

12 - 24V DC

Color Parameters

- Brightness
- Saturation
- Primary colors
- Fading
- Color changing speed



MODEL

TSDMX-E

TSDMX-E - Touchscreen DMX controller

Programmable advanced DMX512 lighting controller featuring a touch-screen interface. Operates as stand alone controller or integrated with most architectural lighting control systems. Can controller endless DMX512 enabled devices.

Mounts to standard single or dual gang wall box with the included power supply inside the junction box. Terminal block design for power and data connections.

Features

- Sleek glass design which sits 0.43" from the wall
- Graphical color display to show selected environment
- Color/dimmer/speed palette
- Color temperature mixing
- Touch sensitive buttons. No mechanical parts
- Touch sensitive wheel allows for accurate color selection
- Multi-zone microSD memory
- Multi-room control with 500 scenes, 10 zones
- 1024 DMX channels. Control 340 RGB fixtures
- USB & Ethernet connectivity for programming and control

Power Supply

7 VDC (included)

Programmability

PC, Mac, Tablet, Smartphone

Output Signal

DMX512 (1024 channels)

Color Parameters

- Brightness
- Saturation
- Speed of color changing sequence
- Fading / dimming / brightness

Plexineon Rings Suspended Mount

RGB, RGBW and RGBW Pixel

Controllers and Decoders



MODEL

SR-DMX-SPI

SR-DMX-SPI - Smart Pixel Decoder

The SR-DMX-SPI is a smart LED pixel decoder that controls RGB/RGBW pixel LED strips with SPI signal. Designed with an OLED backlit panel, the pixel controller allows for easy configuration of most settings. Four push buttons are available for control of the LED functions.
*For pixel only.

Features

- 2 in 1 in-Wall Controller: DMX Control or Wireless RGB-W
- SPI signal output for RGB/RGBW pixel light control
- DMX512 controllable and RF/WIFI remote controllable
- Capable of addressing up to 1020 RGB pixels & 765 RGBW pixels
- OLED panel allows for easy configuration

Operating Voltage

12 - 36V DC

Power capacity

up to 96W at 24V

Operating temperature range

from -4°F to +122°F in case



MODEL

DDMX-5CH-RDM-PRO

DDMX-5CH-RDM-PRO-DMX512 Decoder

DMX512 decoder with RDM functionality features 5 PWM output channels with common anode. High PWM output frequency range allows the product to be used in HD video conferencing spaces. All DMX products to be installed per DMX512 Standard.

Power

96 Watt

Inputs

RJ45, XLR-5Pin, Terminal Block

DMX Channels

1 to 5 settable

PWM Output Resolution Ratio

8 or 16 bit

PWM Output Frequency

500Hz - 30KHz

Output Dimming Curve Gamma Value

0.1 ~ 9.9



MODEL

RGBW-WI-R

RGBW-WI-R - WIFI generator

RGBW-WI-R creates a local network that enables any electronic device (phone, tablet, etc.) to control the RGB/W strip connected to a RGBW-RC-R receiver.

The control functions are achieved through a free application download for Android and iOS devices called REALCOLOR.

Operating Voltage

12-36 VDC

Power Supply

PI-130-24 (included)

Operating Temperature Range

from -4°F to +122°F in case