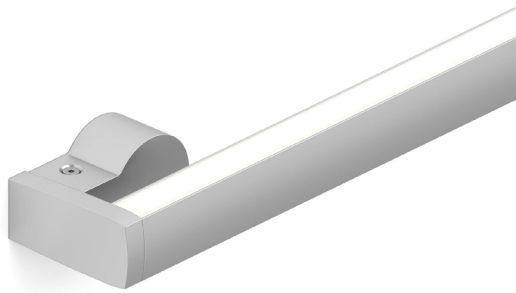


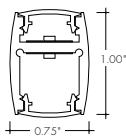
**Features**



- Extruded aluminum linear wall mount system providing both direct and indirect light.
- 24VDC Class 2 fixtures made to order up to 96".
- Suitable for wall mount applications
- Class 2 listed for damp locations
- Dot free even illumination with Frosted Lens
- Direct lumens output is 42.5% of total lumens output from Technical Information
- Proprietary strong bond solder method handles up to 50 lbs of pull force on wire leads and connectors
- Warm Dim follows the incandescent dimming curve and is compatible with MLV, ELV, and Incandescent dimmers.
- Average Life (L70): 50,000hrs
- 7 Year warranty



Warm Dimming



**Finish Options (see page 2 for additional information)**

- Base  Silver Anodized
- 
- Powder Coat  Black  Bronze  White
- 
- Premium  Matte Black  Warm Nickel  Aged Brass  Polished Gold  Chrome



**Technical Information**

<b>TYPE</b>	<b>Warm Dim</b>
<b>OUTPUT OPTIONS</b>	<b>WD68SO (19K-27K)</b>
<b>Lumens Output (Downlight + Uplight all channels full on) (with a Frosted Lens)</b>	275 lm/ft
<b>Average Power Consumption (Downlight + Uplight) (for a 4' section)</b>	10.8 W/ft
<b>Efficacy</b>	43 lm/W
<b>Max Run Length (in series)</b>	10 ft
<b>Ambient Operating Temperature Range*</b>	-5°F - 105°F (-20°C - 40°C)
<b>Control/Dimming Protocol</b>	MLV, ELV, Inc.

**Warm Dim (WD68)**

CCT	TM-30			
	CRI	R <sub>f</sub>	R <sub>g</sub>	R <sub>9</sub>
1900K	96	92	96	94
2700K	96	93	106	95

\* Ambient Operating Temperature Range to maintain L70 of 50k+ hours in normal mounting conditions for the fixture. Exceeding Ambient Operating Temperature Range may result in decreased life/output. Consult Technical Support for specific inquiries.

**Ordering Code**

MODEL	LENGTH <sup>1</sup>	OUTPUT	CCT	LENS	MOUNTING	FINISH <sup>2</sup>	FEED POSITION LEFT <sup>4</sup>	FEED POSITION RIGHT <sup>4</sup>
LUCW - Luceo Wall	24" - 96" 3" increments	WD68SO - Standard	19K27K - 1900K - 2700K	F-Frosted	RND - Round Brackets REC - Rectangle Brackets	<b>BASE</b> SA - Silver Anodized  <b>POWDER COAT</b> BK - Black BZ - Bronze WH - White  <b>PREMIUM</b> MBK - Matte Black WN - Warm Nickel AB - Aged Brass PG - Polished Gold <sup>3</sup> CH - Chrome <sup>3</sup>	<b>WIRE LEADS (72")</b> LWB - Wire Back Feed LNPF - No Power Feed	<b>WIRE LEADS (72")</b> RWB - Wire Back Feed RNPF - No Power Feed
							<b>QUICK CONNECTS (4")</b> LFB - Female Q/C, Back Feed LNPF - No Power Feed	<b>QUICK CONNECTS (4")</b> RFB - Female Q/C, Back Feed RNPF - No Power Feed

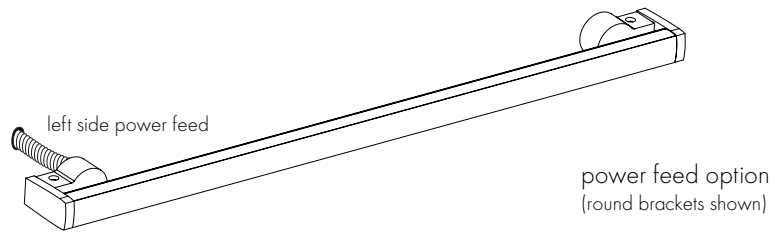
1 - Custom lengths and increments are available, please consult Inside Sales with specific request.

2 - Non Base finishes may have extended lead times. Custom RALs are available, please consult Inside Sales with specific request.

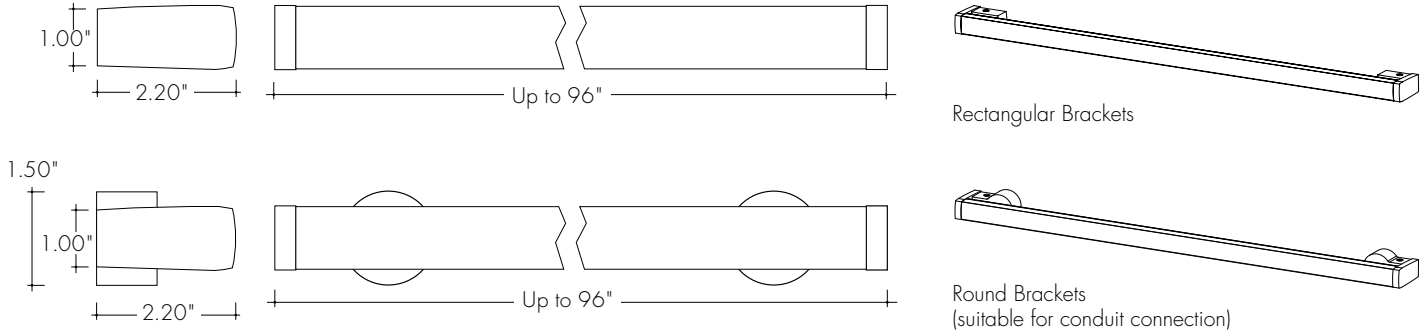
3 - Polished Gold finishes and Chrome finishes have a maximum fixture length of 96".

4 - LNPF - RNPF is not a valid configuration option

**Power Feed Options**



**Product Dimensions**



**Finish Options**

- Finish options are available in a wide variety, allowing for complete customization of style and aesthetic.
- Non Silver Anodized finishes may have extended lead times and price adder.
- Polished Gold and Chrome finishes have a maximum fixture length of 96".
- Custom RALs are available, please consult Inside Sales with specific request.

**Silver Anodized Base**



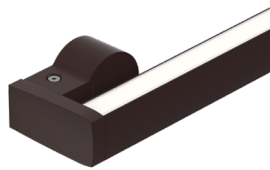
Silver Anodized is a soft silver with a clear finish.

**Black Powder Coat**



Black is a true deep black with a glossy finish.

**Bronze Powder Coat**



Bronze is a rich, dark brown with a satin finish.

**White Powder Coat**



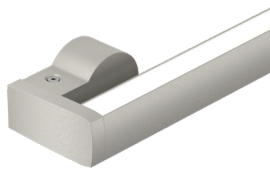
White is a polar bright white and field paintable.

**Matte Black Premium**



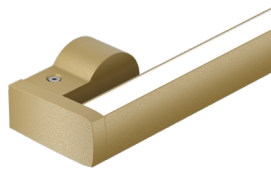
Matte Black is a dark, pitch-black with a soft flat finish.

**Warm Nickel Premium**



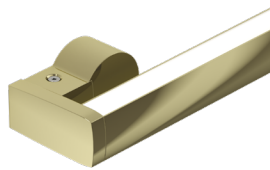
Warm Nickel is a soft, silvery smoke with warm tones and a satin finish.

**Aged Brass Premium**



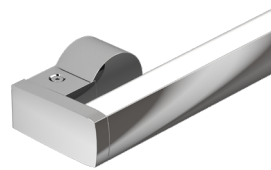
Aged Brass is a deep brown shade with slightly golden undertones.

**Polished Gold Premium**



Polished Gold is bright and radiant for a brilliant finish.

**Chrome Premium**



Chrome is a highly reflective silver polish.

**Light Transmission and Dotting**

Output Options	Lens/Accessory			
	Frosted			
Dimming Level	100%	50%	10%	1%
WD68SO	ND	ND	ND	ND
Transmission Percentage	100%			



**CD** - Clear Dotting  
**SD** - Slight Dotting  
**ND** - No Dotting

**Power Consumption**

Tested at Full Power with PS-UNI Series power supplies.

Standard Nominal Lengths offered provide minimal shadowing. For alternate lengths, please Consult Inside Sales with specific request.

**Warm Dim (WD68)**

Nominal Length (in)	Actual Length	Watts	Nominal Length (in)	Actual Length	Watts	Nominal Length (in)	Actual Length	Watts
		SO			SO			SO
<b>12</b>	–	–	<b>47</b>	–	–	<b>82</b>	–	–
<b>13</b>	–	–	<b>48</b>	–	–	<b>83</b>	82 12/16	69.5
<b>14</b>	–	–	<b>49</b>	48 5/16	42.1	<b>84</b>	–	–
<b>15</b>	–	–	<b>50</b>	–	–	<b>85</b>	–	–
<b>16</b>	–	–	<b>51</b>	50 12/16	44.0	<b>86</b>	85 3/16	71.4
<b>17</b>	–	–	<b>52</b>	–	–	<b>87</b>	–	–
<b>18</b>	–	–	<b>53</b>	–	–	<b>88</b>	87 11/16	73.4
<b>19</b>	–	–	<b>54</b>	53 4/16	45.9	<b>89</b>	–	–
<b>20</b>	–	–	<b>55</b>	–	–	<b>90</b>	–	–
<b>21</b>	–	–	<b>56</b>	55 11/16	48.1	<b>91</b>	90 2/16	75.3
<b>22</b>	–	–	<b>57</b>	–	–	<b>92</b>	–	–
<b>23</b>	–	–	<b>58</b>	–	–	<b>93</b>	92 9/16	77.2
<b>24</b>	23 11/16	20.3	<b>59</b>	58 2/16	50.3	<b>94</b>	–	–
<b>25</b>	–	–	<b>60</b>	–	–	<b>95</b>	–	–
<b>26</b>	–	–	<b>61</b>	60 10/16	52.2	<b>96</b>	95 1/16	79.1
<b>27</b>	26 2/16	22.5	<b>62</b>	–	–			
<b>28</b>	–	–	<b>63</b>	–	–			
<b>29</b>	28 10/16	24.7	<b>64</b>	63 1/16	54.1			
<b>30</b>	–	–	<b>65</b>	–	–			
<b>31</b>	–	–	<b>66</b>	65 8/16	56.1			
<b>32</b>	31 1/16	26.9	<b>67</b>	–	–			
<b>33</b>	–	–	<b>68</b>	68	58.0			
<b>34</b>	33 9/16	29.0	<b>69</b>	–	–			
<b>35</b>	–	–	<b>70</b>	–	–			
<b>36</b>	36	31.2	<b>71</b>	70 7/16	59.9			
<b>37</b>	–	–	<b>72</b>	–	–			
<b>38</b>	–	–	<b>73</b>	72 15/16	61.8			
<b>39</b>	38 7/16	33.4	<b>74</b>	–	–			
<b>40</b>	–	–	<b>75</b>	–	–			
<b>41</b>	40 15/16	35.6	<b>76</b>	75 6/16	64.0			
<b>42</b>	–	–	<b>77</b>	–	–			
<b>43</b>	–	–	<b>78</b>	77 13/16	66.1			
<b>44</b>	43 6/16	37.7	<b>79</b>	–	–			
<b>45</b>	–	–	<b>80</b>	–	–			
<b>46</b>	45 13/16	39.9	<b>81</b>	80 5/16	67.8			

### Voltage Drop Calculator

The below chart assumes nominal voltage of 24 Volts and a Voltage Drop Allowance of 3% through the wire

Wattage [W]	Wire Length From Power Supply to Start of Run [ft]						
	12 AWG	14 AWG	16 AWG	18 AWG	20 AWG	22 AWG	24 AWG
<b>5</b>	1088.2	684.4	430.3	270.6	170.2	107.1	67.3
<b>10</b>	544.1	342.2	215.1	135.3	85.1	53.5	33.7
<b>15</b>	362.7	228.1	143.4	90.2	56.7	35.7	22.4
<b>20</b>	272.0	171.1	107.6	67.7	42.6	26.8	16.8
<b>25</b>	217.6	136.9	86.1	54.1	34.0	21.4	13.5
<b>30</b>	181.4	114.1	71.7	45.1	28.4	17.8	11.2
<b>35</b>	155.5	97.8	61.5	38.7	24.3	15.3	9.6
<b>40</b>	136.0	85.5	53.8	33.8	21.3	13.4	8.4
<b>45</b>	120.9	76.0	47.8	30.1	18.9	11.9	7.5
<b>50</b>	108.8	68.4	43.0	27.1	17.0	10.7	6.7
<b>55</b>	98.9	62.2	39.1	24.6	15.5	9.7	6.1
<b>60</b>	90.7	57.0	35.9	22.6	14.2	8.9	5.6
<b>65</b>	83.7	52.6	33.1	20.8	13.1	8.2	5.2
<b>70</b>	77.7	48.9	30.7	19.3	12.2	7.6	4.8
<b>75</b>	72.5	45.6	28.7	18.0	11.3	7.1	4.5
<b>80</b>	68.0	42.8	26.9	16.9	10.6	6.7	4.2
<b>85</b>	64.0	40.3	25.3	15.9	10.0	6.3	4.0
<b>90</b>	60.5	38.0	23.9	15.0	9.5	5.9	3.7
<b>96</b>	56.7	35.6	22.4	14.1	8.9	5.6	3.5

## Power Supplies

See fixture and power supply instructions & spec sheet for wiring information. Dimming possible in select models - view Luminii website for list of compatible dimmers.

### For use with Warm Dim, WD68

## Ordering Code Phase Dimming Power Supply 1% 120VAC - 277VAC

MODEL	INPUT CONTROL	ENVIRONMENT	WATTAGE	OUTPUT	OUTPUT CONTROL
PS-Power Supply, 120-277VAC	PH-Phase Dimming (Triac, ELV, MLV)	D-Dry	96-96 Watts	24-24 VDC	DC-Direct Current

MLV/ELV/TRIAC - 1% dimming, consult dimming compatibility chart [\(Link\)](#)

MODELS	96W
<b>Length</b>	8.25"
<b>Width</b>	4.10"
<b>Depth</b>	1.56"

