

# LETO 44 PLUS

## SUSPENDED CYLINDER

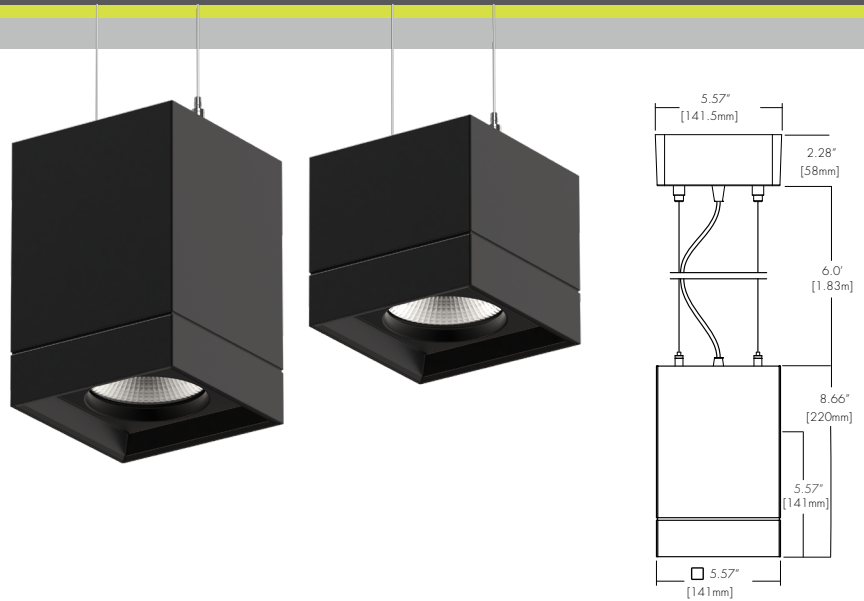


### Features

- Faceted and Smooth metal reflectors provide beam spreads between 10° to 80°.
- Six output options available up to 3500 lumens.
- Nine drivers selections available to cover wide range of applications.
- Five year warranty.

### Finish Options

- White
- Black
- Silver
- Mocha
- Charcoal
- Cerulean
- Firebrick



### Technical Information

OUTPUT OPTIONS	700 lm	1000lm	1500lm	2000lm	3000lm	3500lm	TM-30								
							CCT	Multiplier	CRI	R <sub>f</sub>	R <sub>g</sub>	R <sub>9</sub>			
<b>Fixture wattage</b>	6.0 W	9.1 W	14.0 W	19.8 W	31.8 W	37.2 W									
<b>Delivered Lumen at 3500K</b>	698 lm	1046 lm	1547 lm	1938 lm	3010 lm	3530 lm									
<b>Efficacy</b>	116 lm/W	115 lm/W	110 lm/W	98 lm/W	95 lm/W	95 lm/W									
<b>Center Beam Candlepower (10° Faceted Reflector)</b>	5170 cd	7748 cd	11458 cd	14354 cd	22294 cd	26146 cd									
							<b>2500K</b>	0.80	93+	93	102	50+			
							<b>2700K</b>	0.92	93+	92	100	50+			
							<b>3000K</b>	0.97	93+	92	103	50+			
							<b>3500K</b>	1.00	93+	93	102	50+			
							<b>4000K</b>	1.07	93+	92	101	50+			
							<b>6500K</b>	1.05	93+	92	101	50+			

### Ordering Code

Integral Driver Example: Fixture LET44P-S-07-25K-F10-NA-WH-WH-SQ-WH-SS2-WH-PHSD-NA  
 Remote Driver Example: Fixture LET44P-S-07-25K-F10-NA-WH-WH-SQ-WH-SS2-WH-PHSD-NA-HRM-LET44P-S-07-25K-PHSD-NA

### Fixture

MODEL	TYPE	SIZE	OUTPUT	CCT	OPTIC	ACCESSORY	BODY FINISH	BAFFLE FINISH
LET44P-Leto 44 Plus	S-Suspended	S-Small <sup>1</sup> M-Medium	07-700 (6.0W) 10-1000 (9.1W) 15-1500 (14.0W) 20-2000 (19.8W) 30-3000 (31.8W) 35-3500 (37.2W)	25K-2500K 27K-2700K 30K-3000K 35K-3500K 40K-4000K 65K-6500K	F10-10 Degree, Faceted F18-18 Degree, Faceted F30-30 Degree, Faceted F45-45 Degree, Faceted F60-60 Degree, Faceted S30-30 Degree, Smooth S45-45 Degree, Smooth S80-80 Degree, Smooth	NA-No Accessory CL-Clear Lens DL-Diffusing Lens HC-Honeycomb Louver SL-Solite Lens	Standard WH-White BK-Black SL-Silver  Premium <sup>2</sup> MA-Mocha CC-Charcoal CR-Cerulean FB-Firebrick	Standard WH-White BK-Black SL-Silver  Premium <sup>2</sup> MA-Mocha CC-Charcoal CR-Cerulean FB-Firebrick

### CANOPY/ HOUSING CANOPY FINISH SUSPENSION TYPE SUSPENSION FINISH DRIVER DRIVER OPTIONS

RD-Round SQ-Square RTL-Round Flangeless	Standard WH-White BK-Black SL-Silver  Premium <sup>2</sup> MA-Mocha CC-Charcoal CR-Cerulean FB-Firebrick	2AF-2AC + Feed Cable SS2-Solid Stem, 2ft SS3-Solid Stem, 3ft SS6-Solid Stem, 6ft HS2-Hang Straight, 2ft HS3-Hang Straight, 3ft HS6-Hang Straight, 6ft POA-2 Powered Aircraft, 6ft	Standard NA-None <sup>3</sup> CL-Clear WH-White BK-Black SL-Silver <sup>4</sup>  Premium <sup>2</sup> MA-Mocha <sup>4</sup> CC-Charcoal <sup>4</sup> CR-Cerulean <sup>4</sup> FB-Firebrick <sup>4</sup>	PHSD-Forward/Reverse Phase, 1% Dimming, 120V Only 010S-0-10V, 1% Dimming, 120/277V 0103-0-10V, 1% Dimming, 347V Only 010L-EldoLED, 0-10V, Linear, 0.1% Dimming, 120/277V <sup>5</sup> 010G-EldoLED, 0-10V, Log, 0.1% Dimming, 120/277V <sup>5</sup> DALI-EldoLED, DALI Protocol 2, DT-6, 0.1% Dimming, 120/277V <sup>5</sup> DALI8-EldoLED, DALI Protocol 2, DT-8, 0.1% Dimming, 120/277V <sup>5</sup> LUTE-Lutron HiLume Ecodigital, 1% Dimming, 120V/277V <sup>5,6</sup> DMX-EldoLED, DMX, 0.1% Dimming, 120V/277V <sup>5</sup>	NA-None EMG-Emergency Driver <sup>7,8</sup> CSMB-Casambi <sup>9</sup> AWNR-Athena <sup>9</sup>
-----------------------------------------------	-------------------------------------------------------------------------------------------------------------------------------------	--------------------------------------------------------------------------------------------------------------------------------------------------------------------------------------------------------	------------------------------------------------------------------------------------------------------------------------------------------------------------------------------------------------------------------------------------------	-----------------------------------------------------------------------------------------------------------------------------------------------------------------------------------------------------------------------------------------------------------------------------------------------------------------------------------------------------------------------------------------------------------------------------------------------------------------------------------------------------------------------------------------------------------	---------------------------------------------------------------------------------------------------------

1 - Size Small max output is 1500 lumens.  
 2 - Premium finishes may have extended lead times. Custom RALs are available, please consult Inside Sales with specific request.  
 3 - Must select NA None when POA 2 Powered Aircraft Suspension is selected.  
 4 - These finishes are only available with SSX Solid Stem or HSX Hang Straight Suspension.  
 5 - Requires SQ square canopy for integral driver, otherwise remote mounted.  
 6 - LUTE driver is not available at 700 lumens.  
 7 - All drivers remote mounted when using DALI8 driver, DMX driver, or EMG driver options.  
 8 - Emergency option comes prewired from factory with driver in remote housing. 8W of continuous power provided for a minimum of 90 minutes. Must be installed within 30 feet of luminaire using 18 AWG wire. Not available with 0103, DMX, DALI8 or LUTE Driver.  
 9 - AWNR/CSMB only available with 010S driver

CONTACT FACTORY FOR MORE OPTIONS.

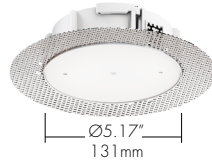
## Canopy

### RD Round Canopy



Integral Drivers	Remote Drivers
010S	010L
0103	010G
PHSD	DAI
	DAI18
	LUTE
	DMX

### RTL Round Trimless Canopy



Integral Drivers	Remote Drivers
N/A	010S
	0103
	PHSD
	010L
	010G
	DAI
	DAI18
	LUTE
	DMX

### SQ Square Canopy



Integral Drivers	Remote Drivers
010S	DAI18
0103	DMX
PHSD	
010L	
010G	
DAI	
DAI18	
LUTE	

Please see next page for Remote Driver Housing details.

## Suspension

### 2AF 2 Aircraft + Feed Cable



### SSX (2', 3', 6' max) Solid Stem



### HSX (2', 3', 6' max) Hang Straight Solid Stem



Maximum Slope: 15°

### POA 2 Powered Aircraft

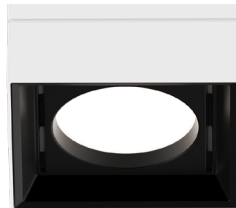


## Lens

### CL Clear Lens



### DL Diffusing Lens



### HC Honeycomb



### SL Solite Lens



## Optics

### FXF (10°, 18°, 30°, 45°, 60°) Faceted Reflector



### SXX (30°, 45°, 80°) Smooth Reflector



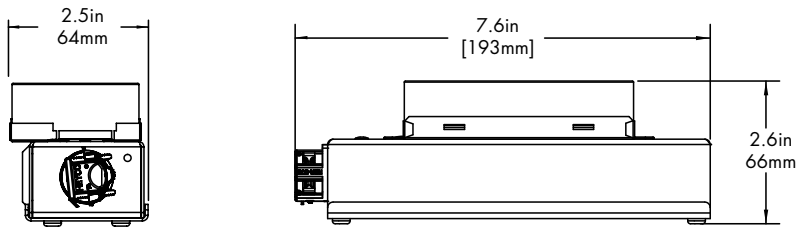
## Remote Driver Housing

Depending on the options selected in the order code on page 1, a Remote Driver Housing may be required. This will automatically be generated and put on your order as necessary.

REMOTE DRIVER	MODEL	OUTPUT	CCT	DRIVER	DRIVER OPTIONS
HRM-Housing, Remote	LET44P-S-Leto 44 Plus Suspended	Same as Fixture	Same as Fixture	Same as Fixture	Same as Fixture

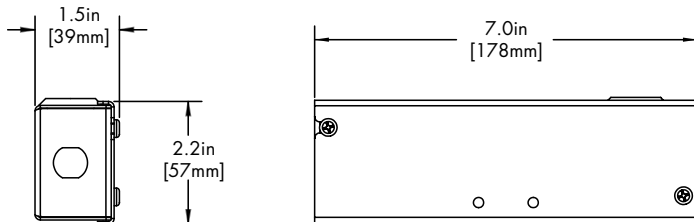
Maximum mounting distance to luminaire using 18 AWG wire								
PHSD	010S	0103	010L	010G	DALI	DALI8	LUTE	DMX
16'	16'	16'	72'	72'	72'	72'	15'	149'

## HRM Single with Externally Mounted Driver



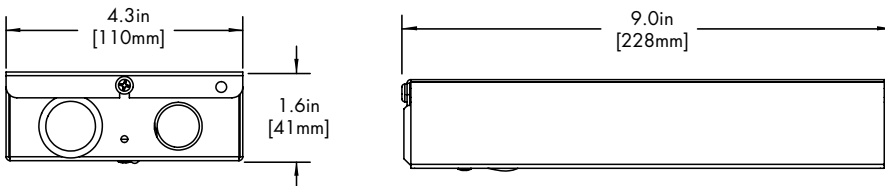
Canopy	+	Driver
RTL	+	0103
RD or RTL	+	010L
RD or RTL	+	010G
RD or RTL	+	DALI
RD or RTL	+	LUTE

## HRM Single



Canopy	+	Driver
RTL	+	PHSD
RTL	+	010S

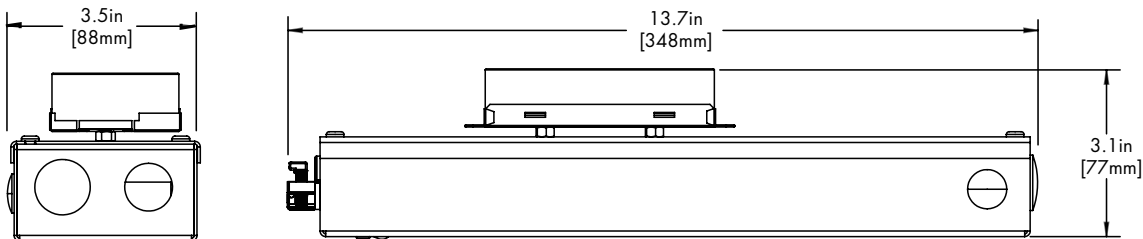
## HRM Double



Driver
DALI8
DMX

## EMG Emergency Driver

120 minute EMG operation time.



Driver
EMG

## Standard Finish

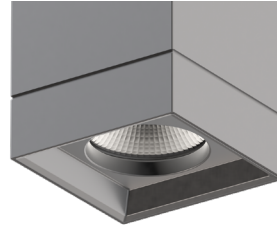
**BK**  
Black



**WH**  
White



**SL**  
Silver



## Premium Finish

Two tone with Black Baffle Finish. Any combination may be used for baffle and body finishes.

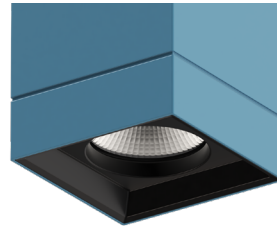
**MA**  
Mocha



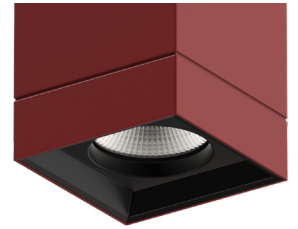
**CC**  
Charcoal



**CR**  
Cerulean



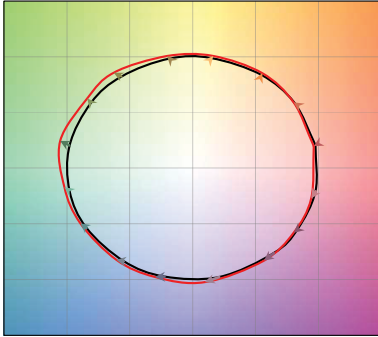
**FB**  
Firebrick



## TM-30

**2500K**

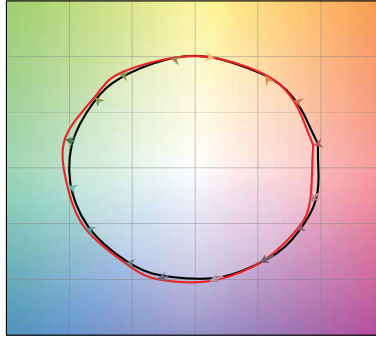
COLOR VECTOR GRAPHIC



— Reference Source — Test Source

**2700K**

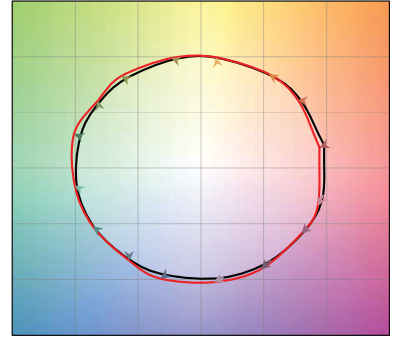
COLOR VECTOR GRAPHIC



— Reference Source — Test Source

**3000K**

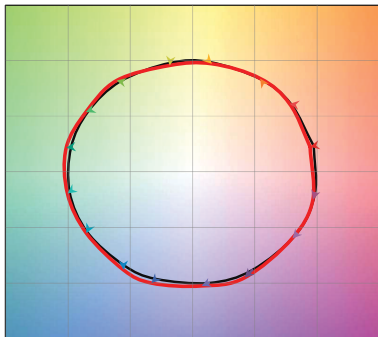
COLOR VECTOR GRAPHIC



— Reference Source — Test Source

**3500K**

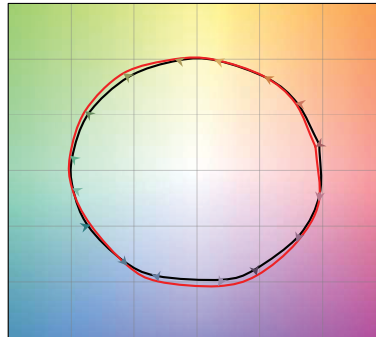
COLOR VECTOR GRAPHIC



— Reference Source — Test Source

**4000K**

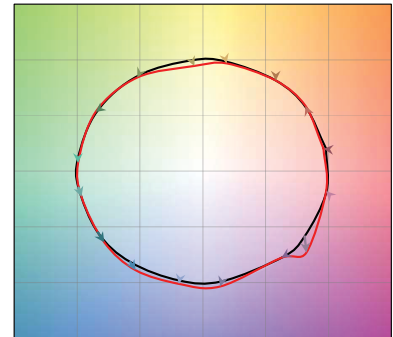
COLOR VECTOR GRAPHIC



— Reference Source — Test Source

**6500K**

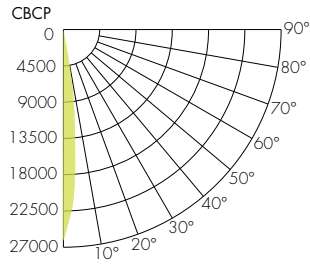
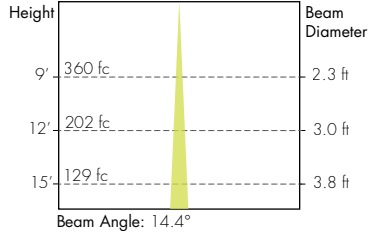
COLOR VECTOR GRAPHIC



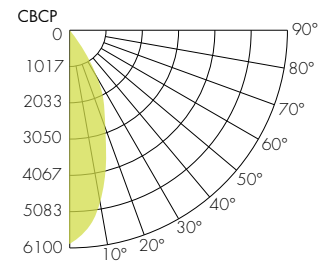
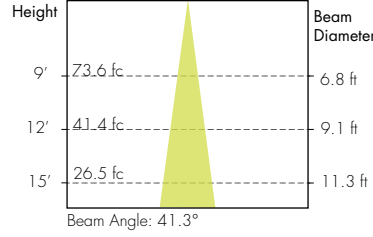
— Reference Source — Test Source

## Photometry

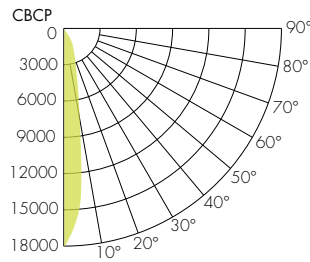
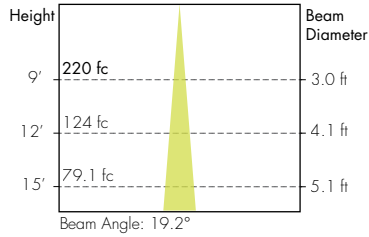
### 10° Faceted Reflector



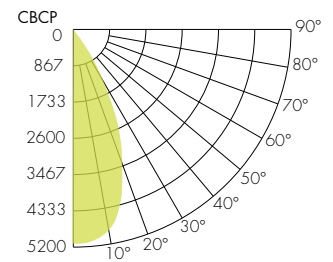
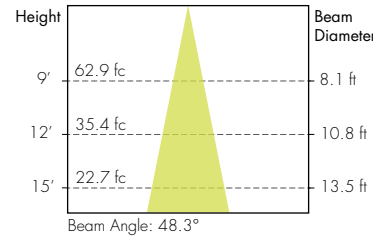
### 30° Smooth Reflector



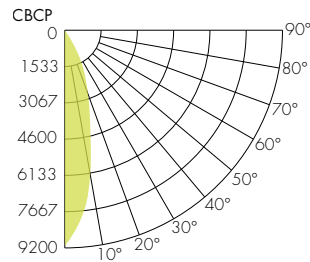
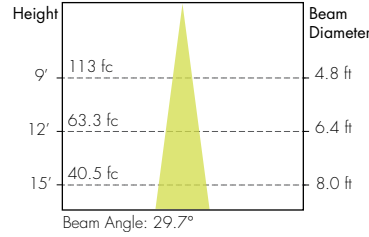
### 18° Faceted Reflector



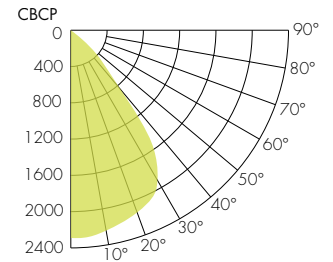
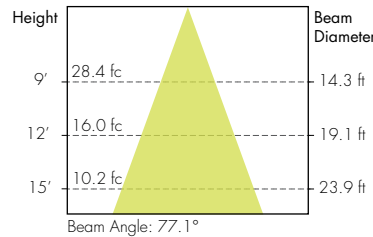
### 45° Smooth Reflector



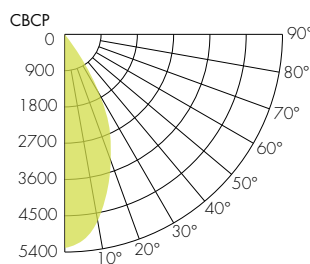
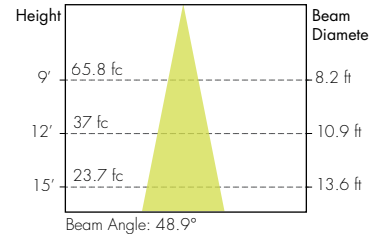
### 30° Faceted Reflector



### 80° Smooth Reflector



### 45° Faceted Reflector



### 60° Faceted Reflector

