



# LETO 11

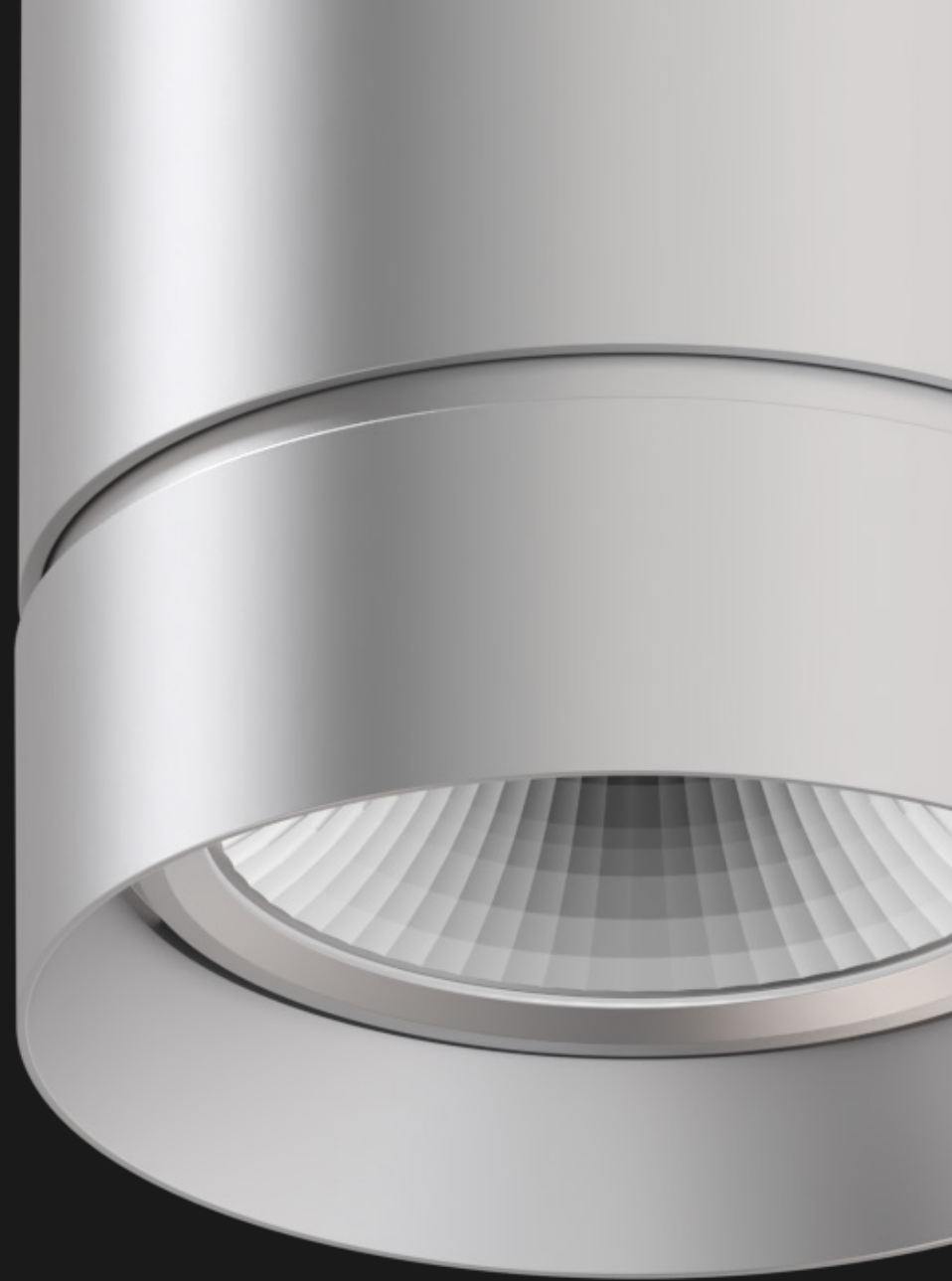
LETO 11 & 11.5 INTERIOR/EXTERIOR CYLINDERS

 **senso**  
by luminii

# Introduction

## Leto 11: The Lighting Industry's Favorite Pendant

With SENSO's superior fit and finish, European influence, and years of design experience, the Leto 11 is a masterpiece of lighting design. Having been remarked as the perfectly sized pendant is no accident. We take our time in the conceptual process to ensure that every dimension and every angle is pleasing to the eye, from a distance, and up close.





# Cylinders that Say More

## Custom Suspension Made Simple

Moved suspended cable height adjustment from ceiling to fixture for easy height tailoring without the need for ceiling access.

## Exceptionally Low UGR

With (<16) rating, Leto ensures minimal glare, creating a comfortable and visually pleasing environment, enhancing productivity and well-being.

## Sleek Design

Clean, nearly invisible lines with knife-edged baffle for a quiet aesthetic upgrade to any space.

## Effortless Installation

New surface mount twist lock design cuts installation time and labor, eliminating the need for set screws.

## Optical Flexibility

Interchangeable optics and secondary optics allow on-site customization.

Stack up to 2 secondary optics, and easily add a honeycomb louver



FILTER COFFEE	2.5
ESPRESSO	2.5
SINGLE ORIGIN COFFEE	A.Q.
MACCHIATO	3
ONE AND ONE	3.5
CAPPUCCINO	3.5
LATTE	4
MOCHA	5
CHAI	4
TEA	A.Q.

BRIGHTEN YOUR DAY

senso  
by luminii



Easier and more adjustable installation



Faceted and Smooth reflectors with UGR <math><16</math>



Removable baffle for changeable optics and accessories in the field



Mix and match color of the body, cap and baffle for endless combinations



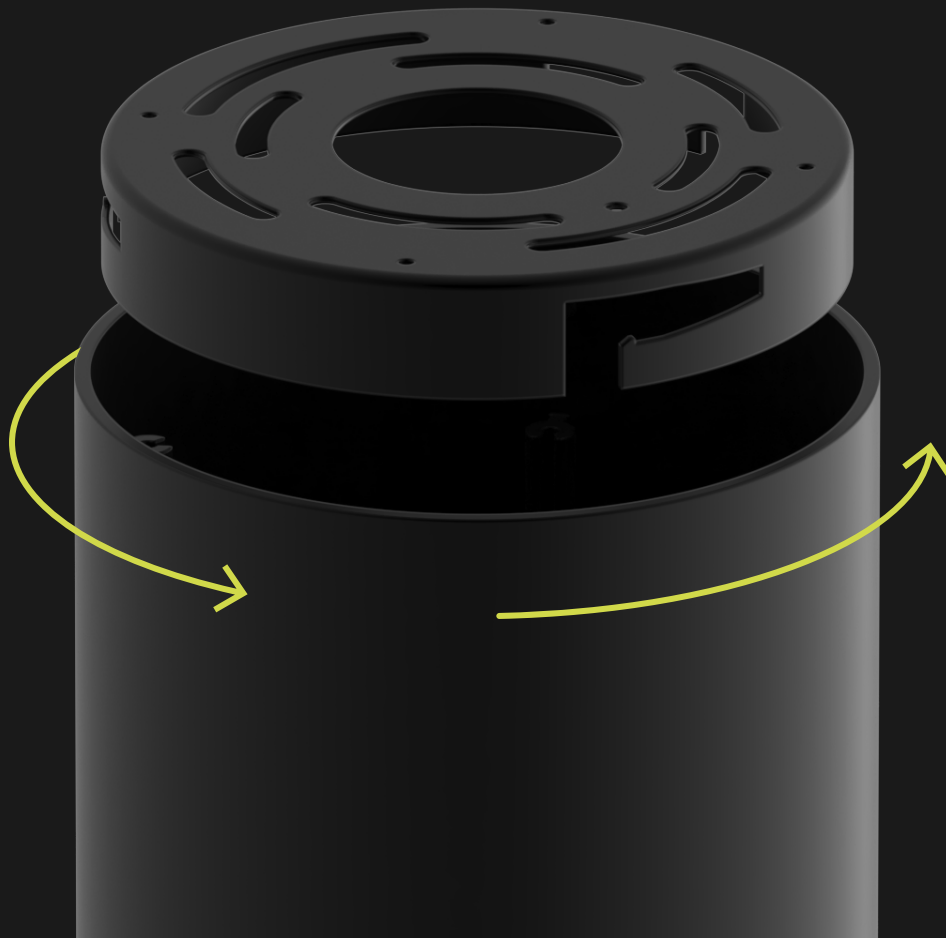
Stack up to 2 accessories to fine-tune the light for your space



# Twist & Shout

## Easier Install

The redesigned Leto 11 Surface Mount bracket is now a single piece. This is simpler and cleaner than the original, making installs and maintenance as easy as a twist.





Vidyard  
📍 Kitchener, ON

LIGHT THE WAY TO SUCCESS

 **senso**  
by luminii

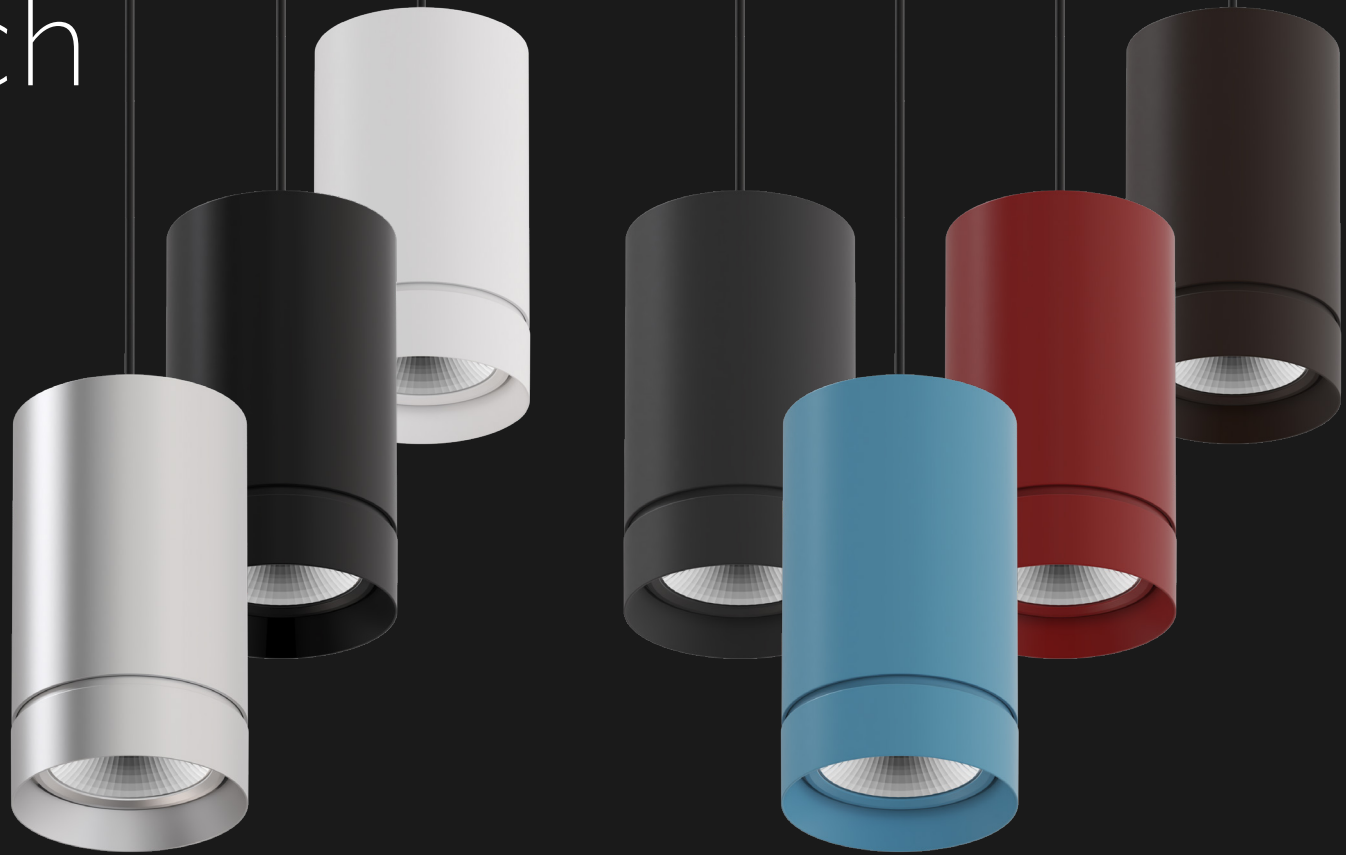
# Mix & Match

## Even More Options

Leto 11 now offers even more ways to tailor your fixture to your space. Field changeable optics and accessories help you shape the light to fit your environment.

The updated 3 piece design gives Leto 11 an infinite amount of color combinations between the body, baffle, and cap.

Premium finishes may have extended lead times. Custom RALs are available, please consult your sales representative with specific requests.



Standard Finishes

Premium Finishes



Faceted



Smooth



Clear



Diffusing



Honeycomb



Solite



# All About Optics

## New & Familiar Optics

Senso's proven faceted reflectors continue to be a part of Leto 11 standard of high quality. New to the mix is a selection of smooth reflectors with the same high performance and low glare you've come to expect from Leto 11.



Smooth



Faceted

Faceted interchangeable optics: 10°, 18°, 30°, 45°, 60° beam spreads are available.

Smooth interchangeable optics: 30°, 45°, 80° beam spreads available.

10°

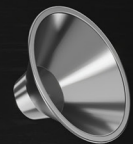
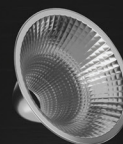
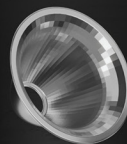
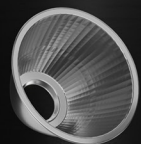
18°

30°

45°

60°

80°



# Leto Cylinders

MODERN. MINIMALIST.  
**SENSO.**

## APERTURE

Size Shape  
3.5" Round

## MOUNTING OPTIONS

- Suspended
- Surface
- Wall

## OUTPUT OPTIONS

up to 3500lm

## OPTIC OPTIONS




Faceted & Smooth

10°, 18°, 30°,  
45°, 60°, 80°

## DRIVER OPTIONS

- 0-10V
- EldoLED
- EldoLED/DALI Protocol
- Lutron
- DMX




## CCTs

-  Static White (2500K-6500K)
-  Warm Dim
-  Tunable White

## OPTICAL ACCESSORIES

- Clear Lens
- Diffusing Lens
- Honeycomb Louver
- Solite Lens

## BODY & BAFFLE FINISHES

- | Standard   | Premium   |
|--|---|
|  White  |  Mocha     |
|  Black  |  Charcoal  |
|  Silver |  Cerulean  |
|  |  Firebrick |

## Leto 11



**Leto 11**  
Suspended  
*Dry & Wet*



**Leto 11**  
Surface  
*Dry & Wet*



**Leto 11**  
Wall Mount  
*Dry & Wet*



**Leto 11**  
Suspended  
*Asymmetric*



**Leto 11**  
Surface  
*Asymmetric*



**Leto 11**  
Wall Mount  
*Asymmetric*



## Leto 11.5



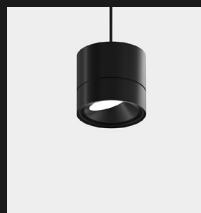
**Leto 11.5**  
Suspended  
*Dry & Wet*



**Leto 11.5**  
Surface  
*Dry & Wet*



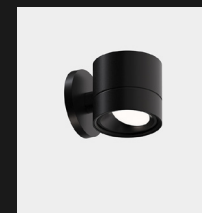
**Leto 11.5**  
Wall Mount  
*Dry & Wet*



**Leto 11.5**  
Suspended  
*Asymmetric*



**Leto 11.5**  
Surface  
*Asymmetric*



**Leto 11.5**  
Wall Mount  
*Asymmetric*



**RoHS Declare.**



**senso**  
by luminii



BMO Center

📍 Calgary, AB

REDEFINE YOUR SPACE

 **senso**  
by luminii

# Declare

Luminii is committed to making an active effort to reduce environmental impact, promote ecofriendly materials, and contribute to the overall well-being of the environment. Because of this, LETO 11 and Artemis downlights are Declare Certified as part of the company's multifaceted approach to sustainability.

To learn more about this and our other Declare Certified lighting solutions visit:  
<https://declare.living-future.org/>



## Declare.

---

### Senso by Luminii Leto 11 Luminii

**Final Assembly:** Calgary, Alberta, Canada  
**Life Expectancy:** 6.5+ Year(s)  
**End of Life Options:** Recyclable (95%), Landfill (5%)

---

**Ingredients:**

**Suspension Assembly:** Aluminum; Iron; Silicon; Brass; Manganese; Magnesium; Copper; Nickel (Metallic); Chromium, metallic; **Mounting:** Aluminum; Iron; **Polyvinyl chloride;** Copper; Silicon; Brass; Nickel (Metallic); Magnesium; Manganese; Poly[imino(1,6-dioxo-1,6-hexanediy)imino-1,6-hexanediy]; Chromium, metallic; Nylon 6; **Module / Reflector Assembly:** Aluminum; Aluminum alloy, cobalt-molybdenum; Iron; Small Electrical Components - RoHS Compliant<sup>1</sup>; Copper; **Polyvinyl chloride;** Polyethylene; Magnesium hydroxide; Steel, carbon; Poly[imino(1,6-dioxo-1,6-hexanediy)imino-1,6-hexanediy]; Magnesium; Silicon; Manganese; **DBDPE;** Nylon 6; **Driver (RoHS-Compliant):** Small Electrical Components - RoHS Compliant<sup>1</sup>; **Small Product Hardware:** Steel; Aluminum

<sup>1</sup>LBC Temp Exception RL-002 - Small Electrical Components

---

**Living Building Challenge Criteria:**

**I-13 Red List:**

<input type="checkbox"/> LBC Red List Free	% Disclosed: 100% at 100ppm
<input type="checkbox"/> LBC Red List Approved	VOC Content: Not Applicable
<input checked="" type="checkbox"/> Declared	

**I-10 Interior Performance:** Not Applicable  
**I-14 Responsible Sourcing:** Not Applicable

LMI-0002  
EXP. 01 SEP 2024  
Original Issue Date: 2023

MANUFACTURER RESPONSIBLE FOR LABEL ACCURACY  
INTERNATIONAL LIVING FUTURE INSTITUTE™ [living-future.org/declare](https://living-future.org/declare)



Founded in 2010, Luminii quickly became a leader in commercial lighting and LED manufacturing, renowned for our customizable and finely crafted products. Acquiring Senso in 2019, we bolstered our commitment to innovative lighting solutions.

Our approach combines meticulous design with superior product construction, empowering designers to realize their creative visions with unprecedented control and flexibility. From renowned hotels to historic landmarks and luxury retailers, Luminii transforms spaces with unparalleled light quality, setting new standards in the industry.

[luminii.com](http://luminii.com)

[info@sensolighting.com](mailto:info@sensolighting.com)



Follow our Socials!

