

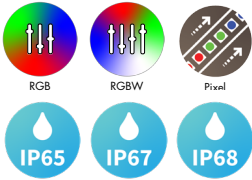
Features



LLRGBX18WET-T



LLRGBWX18WET-T



The LLX18-RGB Wet is a small profile and energy efficient color-changing light strip. It is easily installed directly on to the mounting surface with double sided tape or within discrete mounting extrusions. The durable but flexible circuit board enables the perfect fit for every application.

LLX18-WET-T-RGBW-SPI is a new small profile, more energy efficient LED strip for wet locations. The LineLED RGB & RGBW Wet Tube has superior light output, a durable but flexible circuit board and it is very easy to install.

Mounting

LED strip is equipped with 3M™ self-adhesive tape.

Applications

Outdoor and wet locations - cove lighting, architectural accent, handrail, wet bars.

Approvals

IP65, IP67, and IP68 rated

Operating voltage

24 VDC

Average Life (L70)

50,000 hours

Warranty

3 years



Technical Information

TYPE	LLRGBX18	LLRGBWX18
OUTPUT OPTIONS	SO	SO
Lumens Output (all channels full on)	152 lm/ft	230 lm/ft
Average Power Consumption (for a 4' section)	4.5 W/ft	5.7 W/ft
Efficacy	34 lm/W	40 lm/W
Ordering Increment (in)	3.94"	
Pitch Length	0.66"	
Max Run Length (in series)	30 ft	20 ft
Max Strip Length	16 ft	
Dimensions	0.53" W x 0.27" H	
Control/Dimming Protocol	SPI Protocol UCS 2903	SPI Protocol UCS 2904

RGBW (3000K)

Tape	TM-30			
	CRI	R _f	R _g	R _b
LLRGBWX18-SO	93	91	99	64

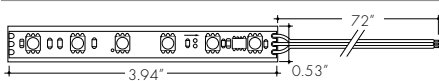
Dominant Wavelength

Color	RGB/RGBW
Red	621nm
Green	519nm
Blue	465nm

Section Start/End Options

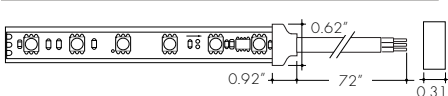
SL65

72" Soldered Leads, IP65 rated



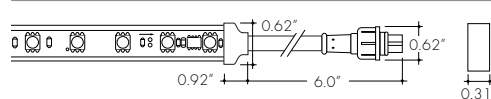
SL68

72" Soldered Leads, IP68 rated



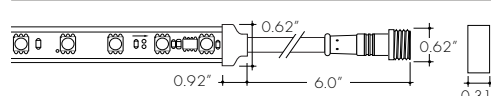
LF

Female Quick Connect End, IP67 rated



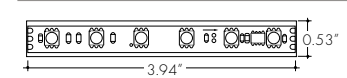
LM

Male Quick Connect End, IP67 rated

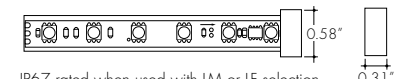


NC

No Connector



IP65 rated when used with SL65 selection



IP67 rated when used with LM or LF selection

IP68 rated when used with SL68 selection

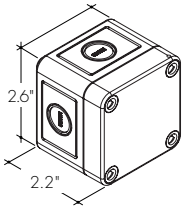
Ordering Code

MODEL	OUTPUT	CCT	SECTION START ¹	SECTION END ¹	LENGTH
LLRGBWX18WET-T-LineLED LLRGBWX18 Wet Tube LLRGBX18WET-T-LineLED LLRGBX18 Wet Tube	SO-Standard	PXSPI-Smart Pixel Control (SPI)	SL65-IP65 Soldered lead wires (72") SL68-IP68 Soldered lead wires (72") LF-IP67 Female connector LM-IP67 Male connector NC-No connector	SL65-IP65 Soldered lead wires (72") SL68-IP68 Soldered lead wires (72") LF-IP67 Female connector LM-IP67 Male connector NC-No connector	Ordered in one foot increments. See chart above for max run length.

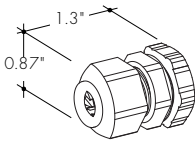
1- IP rating of strip is equal to the lowest IP rating of section start and end options.

Accessories

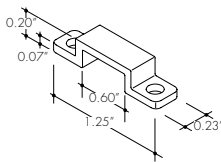
LVSP-WET
Splice box: wet rated, low voltage, gray



LVSP-WET-CM
Splice box connector, low voltage, gray

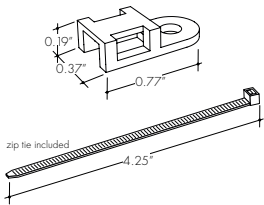


CL2
Mounting clip



Recommended at every 12" when LineLED strip is facing down.

LL.ZIP
Cable/Wire Strain Relief Clip



Lens Options / Light Transmission



Clear

Half (50%)
Frosted

Graze



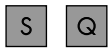
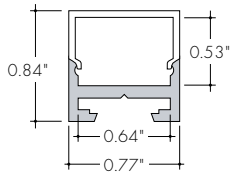
Frosted

Flat
Frosted

Raised

Square
FrostedRound Square
Frosted13°
Semi-Frosted

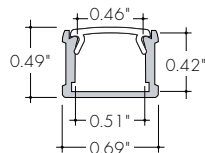
CLA Channel (CLAC-XX)



62% 65%

Not compatible with LF, LM, or IP68 selections

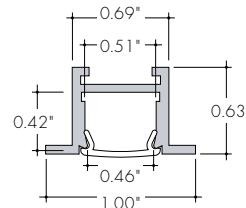
KM Channel (KMC-XX)



82% 68% 45% 52% 58%

Not compatible with LF, LM, or IP68 selections

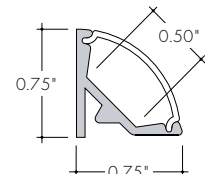
KRM Channel (KRM-XX)



82% 68% 45% 52%

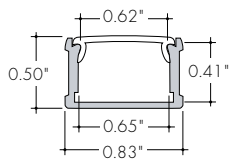
Not compatible with LF, LM, or IP68 selections

K45R Channel (K45R-XX)



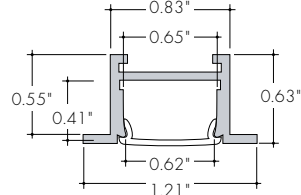
61%

KXL Channel (KXLC-XX)



79% 66% 49%

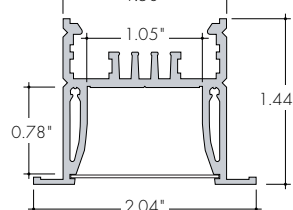
KRXL Channel (KRXLC-XX)



79% 66% 49%

Not compatible with LF, LM, or IP68 selections

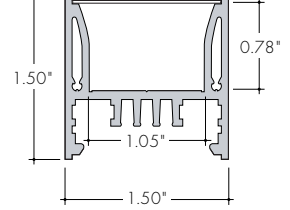
KiloR Channel (KILORC-XX)



85% 75%

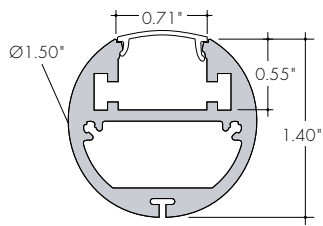
Not compatible with LF, LM, or IP68 selections

Kilo Channel (KILOC-XX)



85% 75%

RO15 Channel (RO15-XX)



65% 41%

Installation

All mounting channels are field cuttable using miter saw with circular blade suitable for cutting aluminum.

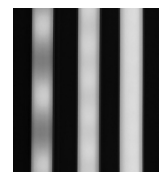
Ordering

Extrusions are sold separately. View respective specsheets for details on ordering extrusions and their accessories (endcaps, mounting brackets, etc).

Led Dotting per Extrusion

using the frosted lens option

Extrusion	LED Models	
	LLRGBX18	LLRGBWX18
CLA	SD	SD
KL	CD	CD
KRL	CD	CD
KXL	SD	SD
KRXL	SD	SD
RO15	SD	SD



CD SD ND

CD - Clear Dotting

SD - Slight Dotting

ND - No Dotting

Power Consumption

Tested at full power with PDC Series power supplies.

LLRGBX18			LLRGBWX18	
Nominal Length	W/ft	Total Wattage	W/ft	Total Wattage
1	4.6	4.6	5.7	5.7
2	4.6	9.1	5.7	11.3
3	4.5	13.1	5.7	16.5
4	4.5	17.4	5.6	21.9
5	4.4	21.7	5.5	27.1
6	4.4	25.8	5.5	32.3
7	4.3	29.8	5.4	37.1
8	4.3	33.4	5.3	41.6
9	4.2	37.2	5.3	46.4
10	4.2	40.9	5.2	51.2
11	4.1	45.7	5.1	57.4
12	4.0	49.2	5.1	61.9
13	4.0	52.3	5.0	66.0
14	3.9	55.6	4.9	69.6
15	3.9	58.8	4.8	73.0
16	3.8	61.8	4.7	76.2
17	3.7	64.0	4.6	78.4
18	3.7	66.8	4.5	81.2
19	3.7	69.4	4.4	83.6
20	3.6	72.0	4.3	86.0
21	3.6	74.6		
22	3.5	75.9		
23	3.4	78.2		
24	3.4	80.2		
25	3.3	82.3		
26	3.3	84.3		
27	3.2	85.0		
28	3.1	86.7		
29	3.1	88.2		
30	3.0	89.7		

Voltage Drop Calculator

The below chart assumes nominal voltage of 24 Volts and a Voltage Drop Allowance of 3% through the wire

Wattage [W]	Maximum Wire Length From Power Supply to Start of Run [ft]						
	12 AWG	14 AWG	16 AWG	18 AWG	20 AWG	22 AWG	24 AWG
5	1088.2	684.4	430.3	270.6	170.2	107.1	67.3
10	544.1	342.2	215.1	135.3	85.1	53.5	33.7
15	362.7	228.1	143.4	90.2	56.7	35.7	22.4
20	272.0	171.1	107.6	67.7	42.6	26.8	16.8
25	217.6	136.9	86.1	54.1	34.0	21.4	13.5
30	181.4	114.1	71.7	45.1	28.4	17.8	11.2
35	155.5	97.8	61.5	38.7	24.3	15.3	9.6
40	136.0	85.5	53.8	33.8	21.3	13.4	8.4
45	120.9	76.0	47.8	30.1	18.9	11.9	7.5
50	108.8	68.4	43.0	27.1	17.0	10.7	6.7
55	98.9	62.2	39.1	24.6	15.5	9.7	6.1
60	90.7	57.0	35.9	22.6	14.2	8.9	5.6
65	83.7	52.6	33.1	20.8	13.1	8.2	5.2
70	77.7	48.9	30.7	19.3	12.2	7.6	4.8
75	72.5	45.6	28.7	18.0	11.3	7.1	4.5
80	68.0	42.8	26.9	16.9	10.6	6.7	4.2
85	64.0	40.3	25.3	15.9	10.0	6.3	4.0
90	60.5	38.0	23.9	15.0	9.5	5.9	3.7
96	56.7	35.6	22.4	14.1	8.9	5.6	3.5

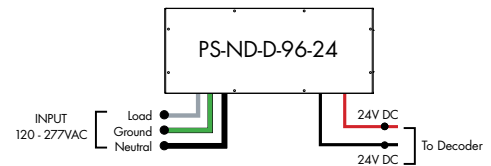
Power Supplies

See fixture and power supply instructions & spec sheet for wiring information. Dimming possible in select models - view Luminii website for list of compatible dimmers.

Ordering Code Non-Dimming Power Supply 120VAC - 277VAC Requires Controller and Decoder

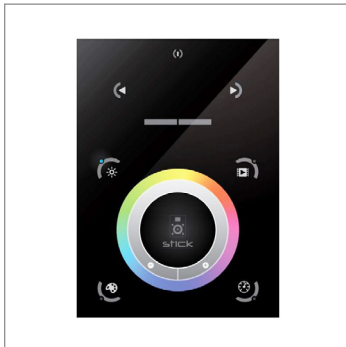
MODEL	INPUT CONTROL	ENVIRONMENT	WATTAGE	OUTPUT
PS-Power Supply, 120-277VAC	ND-Non Dimming	D-Dry	96-96 Watts	24-24 VDC

MODELS	96W
Length	14.40"
Width	5.20"
Depth	2.60"



Touch DMX Controller

Touchscreen digital LED controller



MODEL

TSDMX-E

TSDMX-E - Touchscreen DMX controller

Programmable advanced DMX512 lighting controller featuring a touch-screen interface. Operates as stand alone controller or integrated with most architectural lighting control systems. Can controller endless DMX512 enabled devices.

Mounts to standard single or dual gang wall box with the included power supply inside the junction box. Terminal block design for power and data connections.

Features

- Sleek glass design which sits 0.43" from the wall
- Graphical color display to show selected environment
- Color/dimmer/speed palette
- Color temperature mixing
- Touch sensitive buttons. No mechanical parts
- Touch sensitive wheel allows for accurate color selection
- Multi-zone microSD memory
- Multi-room control with 500 scenes, 10 zones
- 1024 DMX channels. Control 340 RGB fixtures
- USB & Ethernet connectivity for programming and control

Power Supply

7 VDC (included)

Programmability

PC, Mac, Tablet, Smartphone

Output Signal

DMX512 (1024 channels)

Color Parameters

- Brightness
- Saturation
- Speed of color changing sequence
- Fading / dimming / brightness

Smart Pixel Decoder

SPI signal to DMX signal decoder



ORDERING CODE

MODEL

SR-DMX-SPI

SR-DMX-SPI - Smart Pixel Decoder

The SR-DMX-SPI is a smart LED pixel decoder that controls RGB/RGBW pixel LED strips with SPI signal. Designed with an OLED backlit panel, the pixel controller allows for easy configuration of most settings. Four push buttons are available for control of the LED functions.

*For pixel only.

Features

- 2 in 1 in-Wall Controller: DMX Control or Wireless RGB-W
- SPI signal output for RGB/RGBW pixel light control
- DMX512 controllable and RF/WIFI remote controllable
- Capable of addressing up to 1020 RGB pixels & 765 RGBW pixels
- OLED panel allows for easy configuration

Operating Voltage

12 - 36V DC

Power capacity

up to 96W at 24V

Operating temperature range

from -4°F to +122°F in case