

Features

The KS Channel linear aluminum extrusion has been designed to fit many LED lighting needs. Multiple mounting and lens options allow for great flexibility and adaptability for any application. Extrusion and diffuser lenses are also field cuttable. Substantial aluminum mass in profile provides excellent heat sink for high power LEDs. Channels come with specified Mounting Clips and End Caps.

Finish

Silver anodized, White, Black, Bronze

Diffuser Lens

Polycarbonate, snap-in-place, UV resistant

Mounting

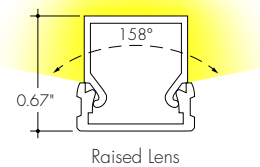
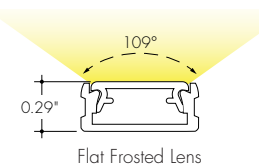
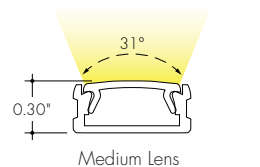
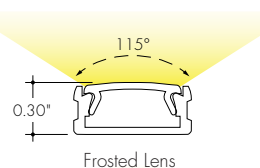
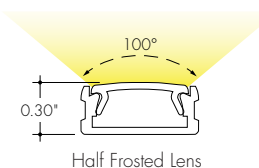
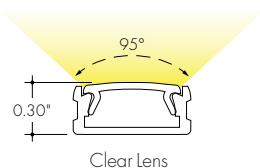
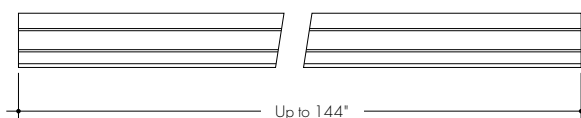
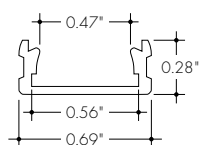
Multiple mounting clip

Warranty

7 Years

Declare. MADE IN U.S.A.

Product Dimensions



INCLUDED MOUNTING ACCESSORIES

EXTRUSION LENGTH	MOUNTING CLIPS (ALL TYPES)	ENDCAP PAIR
48"	3	1
72"	3	1
96"	4	1
120"	4	1
144"	5	1

Each pair of endcaps includes 1x H3 (no wire feed hole) and 1x H4 (with hole) where applicable. Additional endcaps and mounting clips are available for purchase.

TRANSMISSION PERCENTAGE
(COMPARED TO LED TAPE WITHOUT CHANNEL)

LENS	TRANSMISSION %
Clear	86%
Medium	85%
Half Frosted	71%
Raised	64%
Flat Frosted	60%
Frosted	56%

See LED tape spec sheet for lens dotting characteristics & compatibility

Ordering code

MODEL	LENGTH	LENS	MOUNTING ²	FINISH ⁴
KSC - KS Channel ¹	48 - 48" 72 - 72" 96 - 96" ³ 120 - 120" ³ 144 - 144" ³	C - Clear F - Frosted HF - Half Frosted M - Medium R - Raised FF - Flat Frosted	FC - Fixed Clip FC45 - Fixed, Clip 45° A - Adjustable Hinge Mounting EFC - Tamper Resistant Fixed Clip	BASE SA - Silver Anodized POWDER COATED BK - Black BZ - Bronze WH - White

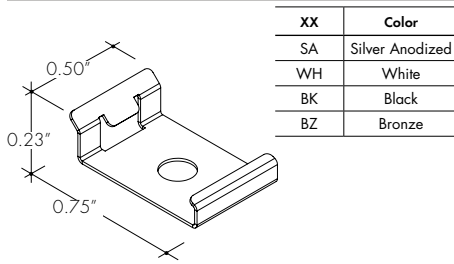
1 - End Caps are included with channel, one of H3 (no hole) and one of H4 (with hole). Order additional End Caps as necessary.
2 - Mounting Clips are included with channel. Refer to chart above for provided mounting clip quantities. Order additional Mounting Clips as necessary.

3 - For Channels and Lenses over 96", incremental shipping charges will apply.
4 - Powder Coated finishes may have extended lead times. Custom RALs are available, please consult Inside Sales with specific request.

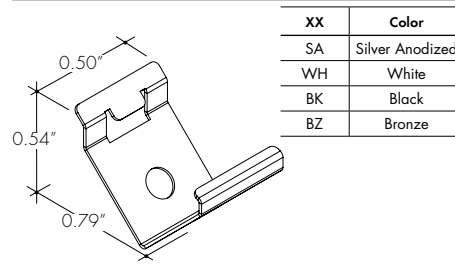
All Channels come with a specified set of Mounting Clips and End Caps, see Ordering Code for details. Order additional Mounting Clips and End Caps as necessary.

Mounting Clips

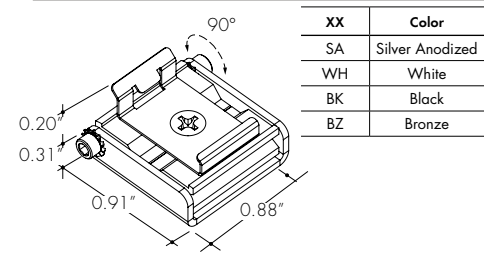
MB-KMSC-XX
Fixed mounting clip
-FC



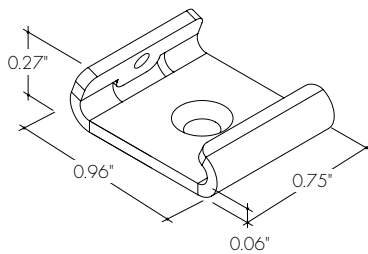
MB-KMSC-45-XX
Fixed mounting clip 45°
-FC45



MB-KMSC-A-XX
Adjustable mounting clip
-A

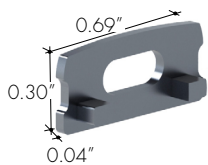


MB-KMSC-EFC-SS
Tamper Resistant Fixed Clip
-EFC

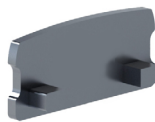


End Caps

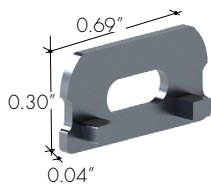
EC-KSC-F-H4-XX
End Cap with Powerfeed Opening



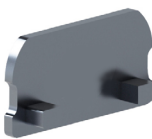
EC-KSC-F-H3-XX
End Cap



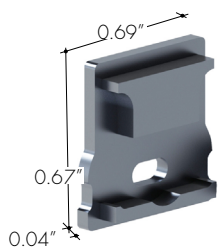
EC-KSC-G-H4-XX
End Cap with Powerfeed Opening



EC-KSC-G-H3-XX
End Cap



EC-KSC-R-H4-XX
End Cap with Powerfeed Opening



EC-KSC-R-H3-XX
End Cap

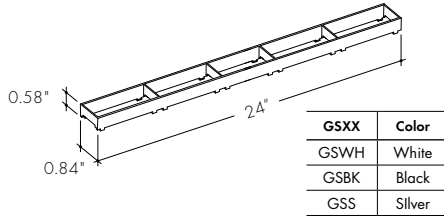


XX	Color
SA	Silver Anodized
WH	White
BK	Black
BZ	Bronze

Glare Shield and Blade Louver Accessory

LV-GS-KMSC-24-XX

Glare Shield reduces glare at high angle, field cuttable. Also available with complete fixture, use ordering code **-GSXX**



LV-BL-KMSC-24-XX

Blade Louver reduces glare at high angle in two directions. Also available with complete fixture, use ordering code **-BLXX**

