

Features

The KRXL Channel is a linear aluminum extrusion that has been designed to fit many recess-mount LED lighting needs. The discrete profile and four finish allow for the perfect fit in multiple mounting surfaces for any application. Channels come with specified Mounting Clips and End Caps.

Finish

Silver anodized, White, Black, Bronze

Diffuser Lens

Polycarbonate, snap-in-place, UV resistant

Mounting

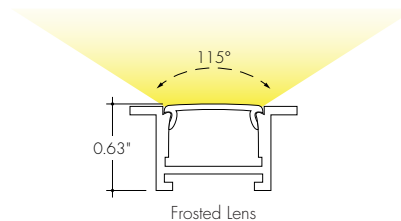
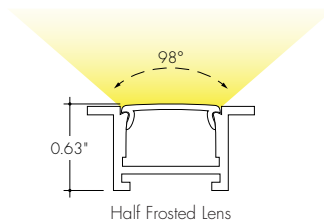
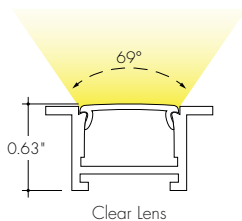
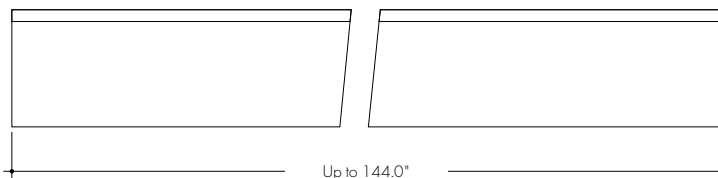
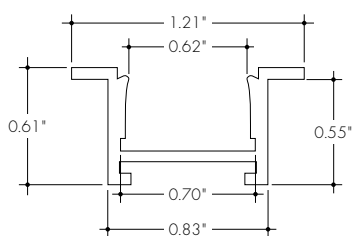
Multiple mounting clips

Warranty

7 Years

Declare. MADE IN U.S.A.

Product Dimensions



INCLUDED MOUNTING ACCESSORIES

| EXTRUSION LENGTH | HARD SURFACE | GYPSUM SURFACE | ENDCAP PAIR |
|------------------|--------------|----------------|-------------|
| 48" | 3 | 6 | 1 |
| 72" | 3 | 6 | 1 |
| 96" | 4 | 8 | 1 |
| 120" | 5 | 10 | 1 |
| 144" | 5 | 10 | 1 |

TRANSMISSION PERCENTAGE (COMPARED TO LED TAPE WITHOUT CHANNEL)

| LENS | TRANSMISSION % |
|--------------|----------------|
| Clear | 79% |
| Half Frosted | 66% |
| Frosted | 49% |

See LED tape spec sheet for lens dotting characteristics & compatibility

Each pair of endcaps includes 2x H3 (no wire feed hole) end caps where applicable. Additional endcaps and mounting clips are available for purchase.

Ordering code

| MODEL | LENGTH | LENS | MOUNTING ² | FINISH ⁴ |
|-----------------------------------|--|---|--|--|
| KRXLC - KRXL Channel ¹ | 48 - 48" 72 - 72" 96 - 96" ¹³ 120 - 120" ¹³ 144 - 144" ¹³ | C - Clear F - Frosted HF - Half Frosted | HS - Hard Surface Mounting Bracket GS - Gypsum Surface Mounting Bracket | BASE SA - Silver Anodized POWDER COATED BK - Black BZ - Bronze WH - White |

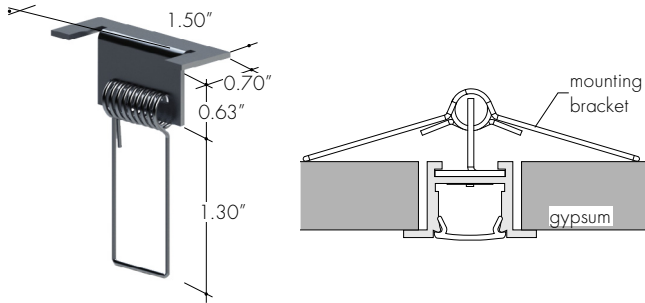
1 - End Caps are included with channel, two of H3 (no hole). Order additional End Caps as necessary.
2 - Mounting Clips are included with channel. Refer to chart above for provided mounting clip quantities.
Order additional Mounting Clips as necessary.

3 - For Channels and Lenses over 96", incremental shipping charges will apply.
4 - Powder Coat finishes may have extended lead times. Custom RALs are available, please consult Inside Sales with specific request.

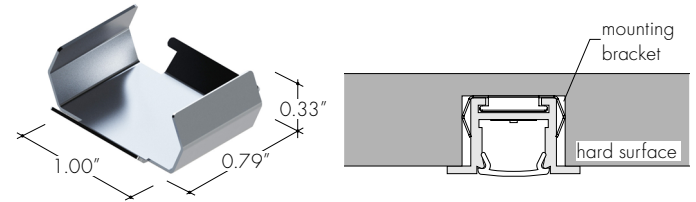
All Channels come with a specified set of Mounting Clips and End Caps, see Ordering Code for details. Order additional Mounting Clips and End Caps as necessary.

Mounting Clips

MB-KRLXLC-G
Stainless Steel Gypsum Surface Mounting Bracket
-GS

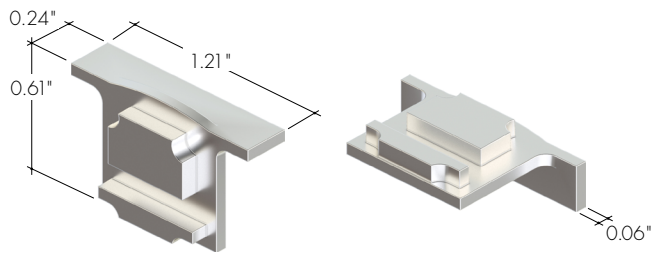


MB-KRLXLC-H
Stainless Steel Hard Surface Mounting Bracket
-HS



End Caps

EC-KRXLC-F-H3-XX
End Cap



| XX | Color |
|----|-----------------|
| SA | Silver Anodized |
| WH | White |
| BK | Black |
| BZ | Bronze |

