



Features

The KL Bendable Channel aluminum extrusion is a versatile solution for linear lighting applications with curved surfaces. The lens and channel are field cuttable and bendable (radius 6" or greater). Frosted lens options is available. Mounting brackets and endcaps are available and included with extrusion, extras are sold separately.

Finish

Silver anodized

Diffuser Lens

Polycarbonate, snap-in-place, UV resistant

Bending Radius

6" min

Mounting

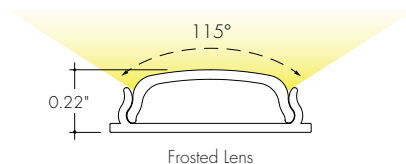
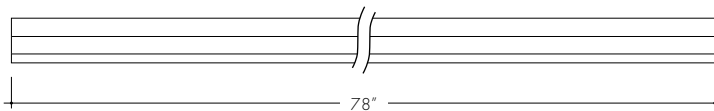
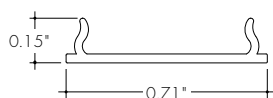
Multiple mounting clips

Warranty

7 Years

Declare. MADE IN U.S.A

Product Dimensions



INCLUDED MOUNTING ACCESSORIES

| EXTRUSION LENGTH | MOUNTING CLIPS | ENDCAP PAIR |
|------------------|----------------|-------------|
| 78" | 7 | 1 |

Each pair of endcaps includes 1x H3 (no wire feed hole) and 1x H4 (with hole) where applicable. Additional endcaps and mounting clips are available for purchase.

TRANSMISSION PERCENTAGE

(COMPARED TO LED TAPE WITHOUT CHANNEL)

| LENS | TRANSMISSION % |
|---------|----------------|
| Frosted | 56% |

See LED tape spec sheet for lens dotting characteristics & compatibility

Ordering Code

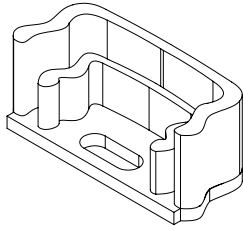
| MODEL | LENGTH | DIFFUSER | MOUNTING ² | FINISH |
|---------------------------------------|--------|-----------|-----------------------|--------------------|
| KLBC-KL Bendable Channel ¹ | 78-78" | F-Frosted | FC-Fixed Clip | SA-Silver Anodized |

1 - End Caps are included with channel, one of H3 (no hole) and one of H4 (with hole). Order additional End Caps as necessary.

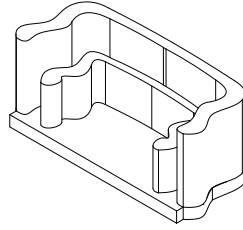
2 - Mounting Clips are included with channel. Refer to chart above for provided mounting clip quantities. Order additional Mounting Clips as necessary.

End Caps

EC-KLBC-F-H4-SA
End Cap with Powerfeed Opening

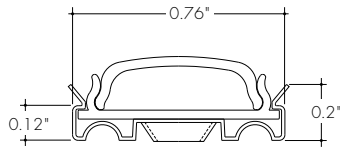
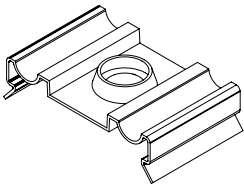


EC-KLBC-F-H3-SA
End Cap



Mounting Bracket

MB-KLBC-SS
Stainless steel screw-in mounting bracket, comes w/ mounting screw.
Requires one every 12"



extrusion with lens and mounting

