

# Explorer Wall - Installation Instructions

Models EXPW-XX

**Please read all instructions prior to installation and keep for future reference!**

1. PRODUCT TO BE INSTALLED BY A QUALIFIED ELECTRICIAN.
2. PRIOR TO INSTALLATION ENSURE POWER IS OFF AT FUSE BOX TO PREVENT ELECTRICAL SHOCK.
3. USE ONLY WITH CLASS 2 LED DRIVER.
4. SUITABLE FOR DAMP LOCATION INSTALLATIONS.
5. FIXTURE SHOULD BE INSTALLED BY TWO PEOPLE.

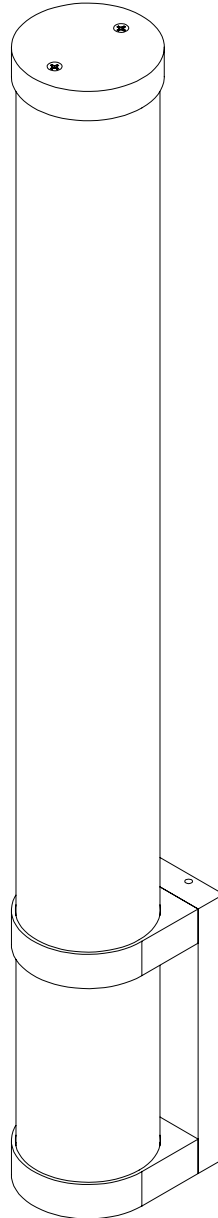


REVO.2  
12302024

1 / 4



7777 Merrimac Ave  
Niles, IL 60714  
T 224.333.6033  
F 224.757.7557  
info@luminii.com  
www.luminii.com



# Explorer Wall - Installation Instructions

Models EXPW-XX



**luminii**

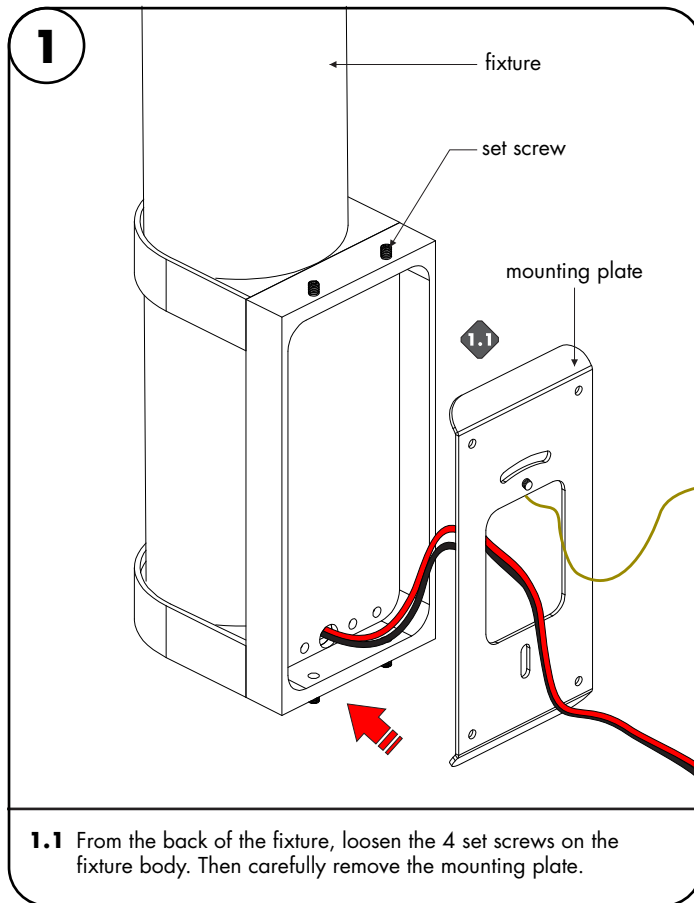
7777 Merrimac Ave  
Niles, IL 60714  
T 224.333.6033  
F 224.757.7557  
info@luminii.com  
www.luminii.com

REVO.2  
12302024

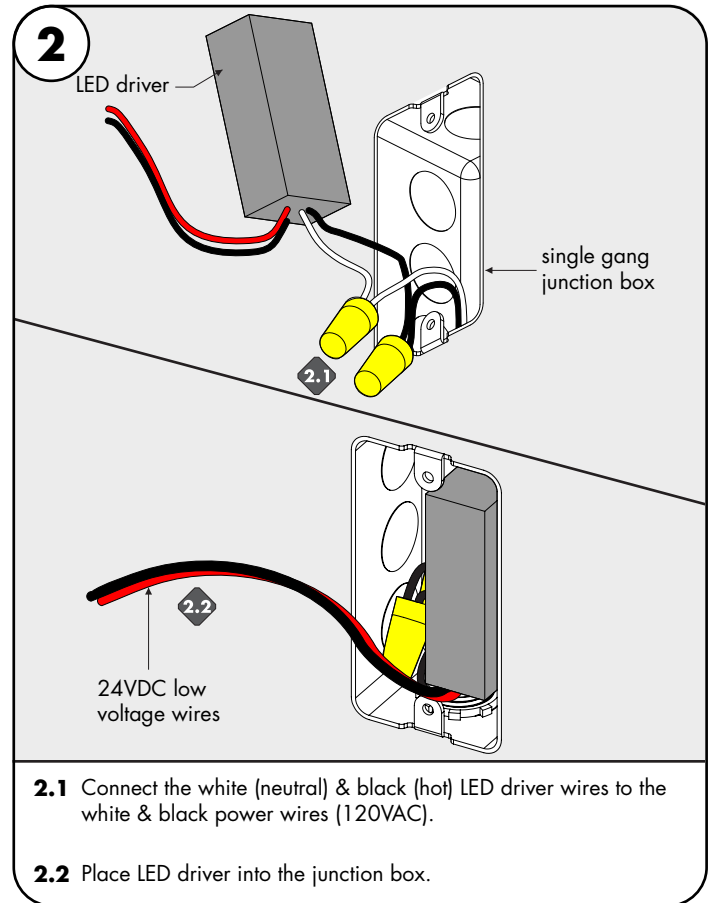
2 / 4

**Please read all instructions prior to installation and keep for future reference!**

1. PRODUCT TO BE INSTALLED BY A QUALIFIED ELECTRICIAN.
2. PRIOR TO INSTALLATION ENSURE POWER IS OFF AT FUSE BOX TO PREVENT ELECTRICAL SHOCK.
3. USE ONLY WITH CLASS 2 LED DRIVER.
4. SUITABLE FOR DAMP LOCATION INSTALLATIONS.
5. FIXTURE SHOULD BE INSTALLED BY TWO PEOPLE.

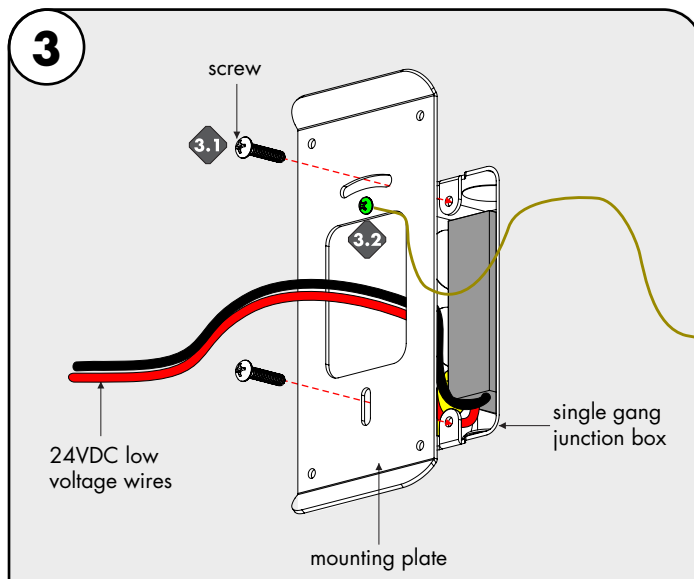


**1.1** From the back of the fixture, loosen the 4 set screws on the fixture body. Then carefully remove the mounting plate.



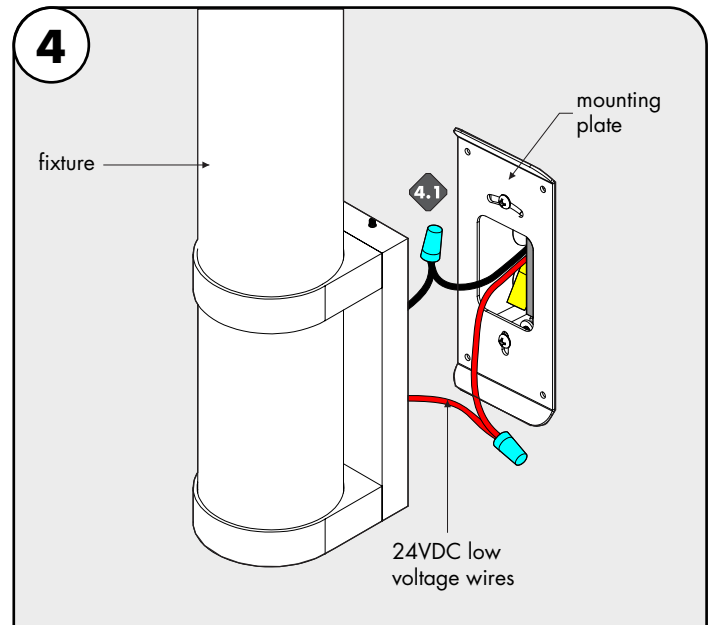
**2.1** Connect the white (neutral) & black (hot) LED driver wires to the white & black power wires (120VAC).

**2.2** Place LED driver into the junction box.



**3.1** Feed the low voltage wires through the center of the mounting plate. Followed by lining up the mounting plate to the junction box and secure using the provided screws.

**3.2** Connect the ground in accordance with local electrical codes.



**4.1** Connect +24 VDC red wire from the fixture to the LED driver +24 VDC red wire with a wire nut. Connect -24VDC black wire from the fixture to LED driver -24VDC black wire with a wire nut.

# Explorer Wall - Installation Instructions

Models EXPW-XX

Please read all instructions prior to installation and keep for future reference!

1. PRODUCT TO BE INSTALLED BY A QUALIFIED ELECTRICIAN.
2. PRIOR TO INSTALLATION ENSURE POWER IS OFF AT FUSE BOX TO PREVENT ELECTRICAL SHOCK.
3. USE ONLY WITH CLASS 2 LED DRIVER.
4. SUITABLE FOR DAMP LOCATION INSTALLATIONS.
5. FIXTURE SHOULD BE INSTALLED BY TWO PEOPLE.



REVO.2  
12302024

3 / 4



7777 Merrimac Ave  
Niles, IL 60714  
T 224.333.6033  
F 224.757.7557  
info@luminii.com  
www.luminii.com

**5**

mounting plate

fixture

wall

mounting plate

fixture

**5.1** Insert the fixture wire nut connections into the junction box.

**5.2** Align the fixture to the mounting bracket & secure by using the fixture screws. Fixture can be mounted in a horizontal or vertical position.

# Explorer Wall - Installation Instructions

Models EXPW-XX



7777 Merrimac Ave  
Niles, IL 60714  
T 224.333.6033  
F 224.757.7557  
info@luminii.com  
www.luminii.com

REVO.2  
12302024

4 / 4

**Please read all instructions prior to installation and keep for future reference!**

1. PRODUCT TO BE INSTALLED BY A QUALIFIED ELECTRICIAN.
2. PRIOR TO INSTALLATION ENSURE POWER IS OFF AT FUSE BOX TO PREVENT ELECTRICAL SHOCK.
3. USE ONLY WITH CLASS 2 LED DRIVER.
4. SUITABLE FOR DAMP LOCATION INSTALLATIONS.
5. FIXTURE SHOULD BE INSTALLED BY TWO PEOPLE.

## Power Supply Wiring Diagram

**Note:** Prior to installation all 24VDC wires must be present near fixture. Refer to the power supply installation instructions for additional information.



Static White  
Wiring Diagram PDF