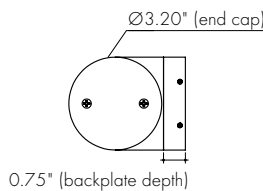


**Features**

- Cylindrical shape with 360° of diffuse, even illumination.
- 24VDC Class 2 fixtures made to order up to 48".
- Suitable for wall mount applications
- Class 2 listed for damp locations
- Dot free even illumination
- Integral power supply included, fits inside a single gang box behind the backplate. 120 VAC only, dimmable with MLV, ELV, and Incandescent dimmers (see dimmer compatibility chart)
- High Color Quality options offer premium quality and vibrant colors with R9 values up to 97
- High Efficacy options offer best in class output and efficacy with over 980 lm/ft and up to 94 lm/W
- Proprietary strong bond solder method handles up to 50 lbs of pull force on wire leads and connectors
- Average Life (L70): 50,000hrs
- 7 year warranty



**Finish Options** (see page 2 for additional information)

- Base  Silver Anodized
- 
- Powder Coat  Black  Bronze  White
- 
- Premium  Matte Black  Warm Nickel  Aged Brass  Polished Gold  Chrome



**Technical Information**

TYPE	High Color Quality		High Efficacy		
	72SO	72HO	HE48LO	HE48SO	HE48MO
<b>OUTPUT OPTIONS</b>					
<b>Lumens Output (3000K)</b> <small>(with a Frosted Lens)</small>	548 lm/ft	891 lm/ft	534 lm/ft	740 lm/ft	988 lm/ft
<b>Average Power Consumption</b> <small>(for a 4' section)</small>	8.4 W/ft	14.4 W/ft	5.7 W/ft	8.4 W/ft	10.5 W/ft
<b>Efficacy</b>	65 lm/W	62 lm/W	94 lm/W	88 lm/W	94 lm/W
<b>Max Run Length</b> <small>(in series)</small>	13 ft	11 ft	16 ft	14 ft	11 ft
<b>Ambient Operating Temperature Range*</b>	-5°F - 115°F <small>(-20°C - 40°C)</small>	-5°F - 80°F <small>(-20°C - 25°C)</small>	-5°F - 125°F <small>(-20°C - 50°C)</small>	-5°F - 115°F <small>(-20°C - 40°C)</small>	-5°F - 105°F <small>(-20°C - 40°C)</small>

\*Ambient Operating Temperature Range to maintain L70 of 50k+ hours in normal mounting conditions for the fixture. Exceeding Ambient Operating Temperature Range may result in decreased life/output. Consult Technical Support for specific inquiries.

**High Color Quality (72)**

CCT	Multiplier <small>(reference - 3000K)</small>	CRI	TM-30		
			R <sub>f</sub>	R <sub>g</sub>	R <sub>9</sub>
1900K	0.55	96	94	97	90
2200K	0.70	96	95	101	89
2400K	0.72	98	97	101	91
2700K	0.74	97	96	101	91
3000K	1.00	97	95	104	97
3500K	1.02	97	94	105	97
4100K	1.07	97	90	99	97

**High Efficacy (HE48/HE64)**

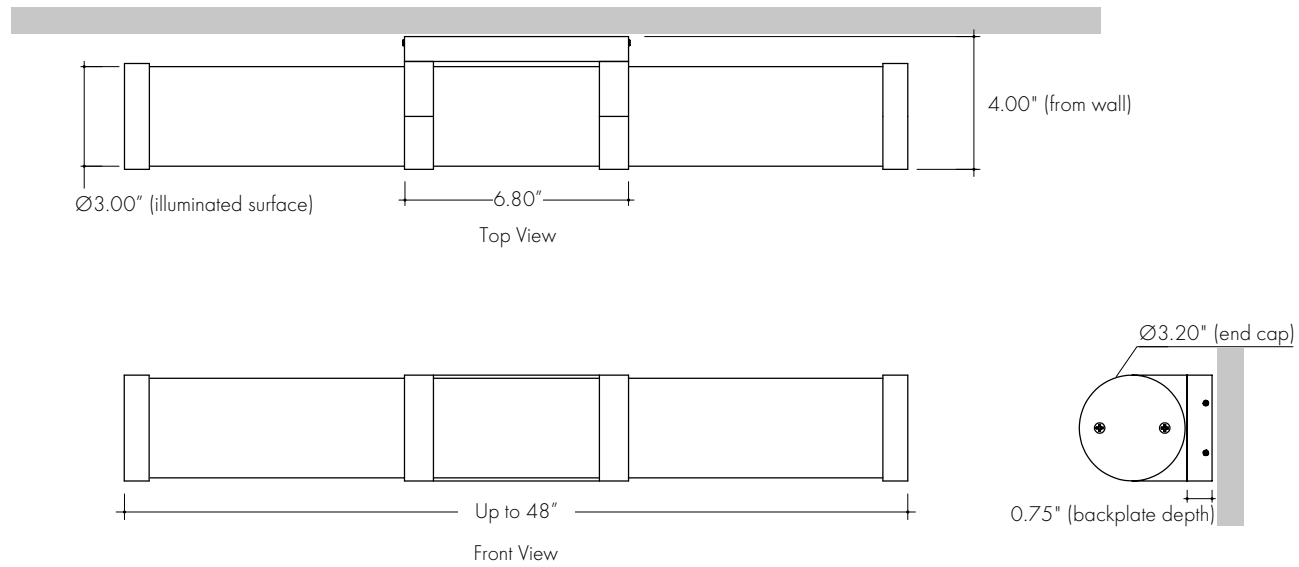
CCT	Multiplier <small>(reference - 3000K)</small>	CRI	TM-30		
			R <sub>f</sub>	R <sub>g</sub>	R <sub>9</sub>
2200K	0.73	92	91	97	42
2500K	0.81	93	96	96	62
2700K	0.94	92	90	99	58
3000K	1.00	92	89	99	57
3500K	1.02	92	89	99	60
4000K	1.02	92	86	94	71

**Ordering Code**

MODEL	LENGTH <sup>1</sup>	OUTPUT <sup>2</sup>	CCT	LENS	FINISH <sup>3</sup>
EXPV - Explorer Vanity	12" - 48" 1" increments	72SO - Standard 72HO - High	19K - 1900K 22K - 2200K 24K - 2400K 27K - 2700K 30K - 3000K 35K - 3500K 41K - 4100K	F - Frosted	<p><b>BASE</b> SA - Silver Anodized</p> <p><b>POWDER COAT</b> BK - Black BZ - Bronze WH - White</p> <p><b>PREMIUM</b> MBK - Matte Black WN - Warm Nickel AB - Aged Brass PG - Polished Gold CH - Chrome</p>
	12" - 48" 2" increments	HE48LO - Low HE48SO - Standard HE48MO - Medium	22K - 2200K 25K - 2500K 27K - 2700K 30K - 3000K 35K - 3500K 40K - 4000K		

1 - Custom lengths and increments are available, please consult Inside Sales with specific request.  
 2 - All High Efficacy options can be used to comply with Title 24 JA8. High Color Quality options can be used to comply with Title 24 JA8 depending on Output, CCT, and Lens selections, see multiplier charts to calculate specific efficacies.  
 3 - Non Base finishes may have extended lead times. Custom RALs are available, please consult Inside Sales with specific request.

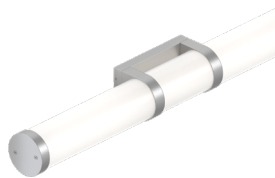
**Product Dimensions**



**Finish Options**

- Finish options are available in a wide variety, allowing for complete customization of style and aesthetic.
- Non Base finishes may have extended lead times and price adder.
- Custom RALs are available, please consult Inside Sales with specific request.

**Silver Anodized Base**



Silver Anodized is a soft silver with a clear finish.

**Black Powder Coat**



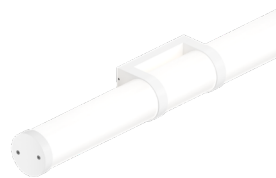
Black is a true deep black with a glossy finish.

**Bronze Powder Coat**



Bronze is a rich, dark brown with a satin finish.

**White Powder Coat**



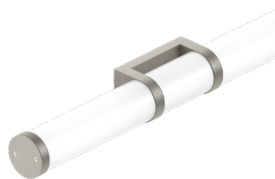
White is a polar bright white and field paintable.

**Matte Black Premium**



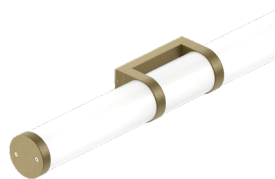
Matte Black is a dark, pitch-black with a soft flat finish.

**Warm Nickel Premium**



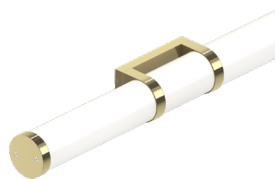
Warm Nickel is a soft, silvery smoke with warm tones and a satin finish.

**Aged Brass Premium**



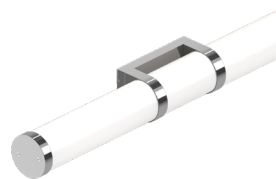
Aged Brass is a deep brown shade with slightly golden undertones.

**Polished Gold Premium**



Polished Gold is bright and radiant for a brilliant finish.

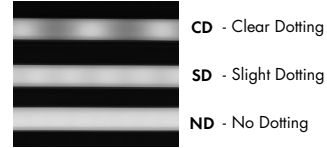
**Chrome Premium**



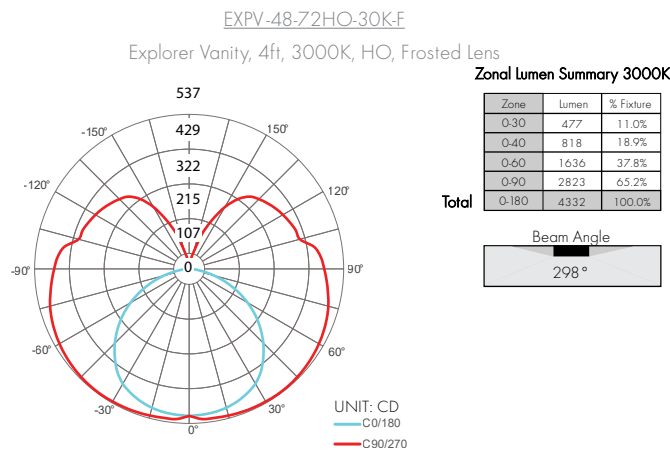
Chrome is a highly reflective silver polish.

Light Transmission and Dotting

Output Options	Lens/Accessory			
	Frosted			
Dimming Level	100%	50%	10%	1%
72SO	ND	ND	ND	ND
72HO	ND	ND	ND	ND
HE48LO	ND	ND	ND	ND
HE48SO	ND	ND	ND	ND
HE48MO	ND	ND <td ND	ND	
Transmission Percentage	100%			



Photometry



**Power Consumption**

Tested at Full Power.

Standard Nominal Lengths offered provide minimal shadowing. For alternate lengths, please consult Inside Sales with specific request.

**High Color Quality (3x 72)**

Nominal Length (in)	Actual Length	Watts		Nominal Length (in)	Actual Length	Watts	
		SO	HO			SO	HO
<b>12</b>	11 4/16	7.1	12.0	<b>47</b>	46	29.6	45.9
<b>13</b>	12 7/16	8.0	13.4	<b>48</b>	47 3/16	30.3	46.8
<b>14</b>	13 9/16	8.7	14.5				
<b>15</b>	14 12/16	9.6	16.0				
<b>16</b>	15 14/16	10.2	17.1				
<b>17</b>	–	–	–				
<b>18</b>	17 1/16	11.1	18.6				
<b>19</b>	18 3/16	11.9	19.7				
<b>20</b>	19 6/16	12.8	21.3				
<b>21</b>	20 8/16	13.6	22.4				
<b>22</b>	21 11/16	14.5	23.8				
<b>23</b>	22 13/16	15.1	24.7				
<b>24</b>	–	–	–				
<b>25</b>	24	15.8	25.7				
<b>26</b>	25 3/16	16.6	26.9				
<b>27</b>	26 5/16	17.3	27.9				
<b>28</b>	27 8/16	18.1	29.2				
<b>29</b>	28 10/16	18.7	30.1				
<b>30</b>	29 13/16	19.6	31.5				
<b>31</b>	30 15/16	20.4	32.5				
<b>32</b>	–	–	–				
<b>33</b>	32 2/16	21.3	33.9				
<b>34</b>	33 4/16	22.0	34.9				
<b>35</b>	34 7/16	22.7	36.2				
<b>36</b>	35 9/16	23.3	37.1				
<b>37</b>	36 12/16	24.1	38.4				
<b>38</b>	37 14/16	24.8	39.3				
<b>39</b>	–	–	–				
<b>40</b>	39 1/16	25.6	40.5				
<b>41</b>	40 3/16	26.3	41.4				
<b>42</b>	41 6/16	27.1	42.6				
<b>43</b>	42 8/16	27.7	43.4				
<b>44</b>	43 11/16	28.5	44.5				
<b>45</b>	44 14/16	29.1	45.3				
<b>46</b>	–	–	–				

**Power Consumption**

Tested at Full Power.

Standard Nominal Lengths offered provide minimal shadowing. For alternate lengths, please consult Inside Sales with specific request.

**High Efficacy (3x HE48)**

Nominal Length (in)	Actual Length	Watts			Nominal Length (in)	Actual Length	Watts		
		LO	SO	MO			LO	SO	MO
<b>12</b>	11 13/16	5.4	7.7	9.6	<b>47</b>	-	-	-	
<b>13</b>	-	-	-	-	<b>48</b>	47 4/16	20.0	33.3	41.1
<b>14</b>	13 13/16	6.2	9.2	11.4					
<b>15</b>	-	-	-	-					
<b>16</b>	15 12/16	6.9	10.7	13.3					
<b>17</b>	-	-	-	-					
<b>18</b>	17 12/16	7.7	12.3	15.1					
<b>19</b>	-	-	-	-					
<b>20</b>	19 11/16	8.7	14.0	17.0					
<b>21</b>	-	-	-	-					
<b>22</b>	21 11/16	9.7	15.6	18.7					
<b>23</b>	-	-	-	-					
<b>24</b>	23 10/16	10.7	17.0	20.3					
<b>25</b>	-	-	-	-					
<b>26</b>	25 10/16	11.6	18.4	22.0					
<b>27</b>	-	-	-	-					
<b>28</b>	27 9/16	12.5	19.9	23.9					
<b>29</b>	-	-	-	-					
<b>30</b>	29 9/16	13.4	21.3	25.7					
<b>31</b>	-	-	-	-					
<b>32</b>	31 8/16	14.3	22.6	27.5					
<b>33</b>	-	-	-	-					
<b>34</b>	33 8/16	15.0	23.7	29.0					
<b>35</b>	-	-	-	-					
<b>36</b>	35 7/16	15.8	25.0	30.7					
<b>37</b>	-	-	-	-					
<b>38</b>	37 7/16	16.7	26.4	32.5					
<b>39</b>	-	-	-	-					
<b>40</b>	39 6/16	17.5	27.7	34.3					
<b>41</b>	-	-	-	-					
<b>42</b>	41 6/16	18.3	29.0	36.0					
<b>43</b>	-	-	-	-					
<b>44</b>	43 5/16	18.8	30.4	37.7					
<b>45</b>	-	-	-	-					
<b>46</b>	45 5/16	19.3	31.8	39.4					

**Voltage Drop Calculator**

The below chart assumes nominal voltage of 24 Volts and a Voltage Drop Allowance of 3% through the wire

Wattage [W]	Maximum Wire Length From Power Supply to Start of Run [ft]						
	12 AWG	14 AWG	16 AWG	18 AWG	20 AWG	22 AWG	24 AWG
<b>5</b>	1088.2	684.4	430.3	270.6	170.2	107.1	67.3
<b>10</b>	544.1	342.2	215.1	135.3	85.1	53.5	33.7
<b>15</b>	362.7	228.1	143.4	90.2	56.7	35.7	22.4
<b>20</b>	272.0	171.1	107.6	67.7	42.6	26.8	16.8
<b>25</b>	217.6	136.9	86.1	54.1	34.0	21.4	13.5
<b>30</b>	181.4	114.1	71.7	45.1	28.4	17.8	11.2
<b>35</b>	155.5	97.8	61.5	38.7	24.3	15.3	9.6
<b>40</b>	136.0	85.5	53.8	33.8	21.3	13.4	8.4
<b>45</b>	120.9	76.0	47.8	30.1	18.9	11.9	7.5
<b>50</b>	108.8	68.4	43.0	27.1	17.0	10.7	6.7
<b>55</b>	98.9	62.2	39.1	24.6	15.5	9.7	6.1
<b>60</b>	90.7	57.0	35.9	22.6	14.2	8.9	5.6
<b>65</b>	83.7	52.6	33.1	20.8	13.1	8.2	5.2
<b>70</b>	77.7	48.9	30.7	19.3	12.2	7.6	4.8
<b>75</b>	72.5	45.6	28.7	18.0	11.3	7.1	4.5
<b>80</b>	68.0	42.8	26.9	16.9	10.6	6.7	4.2
<b>85</b>	64.0	40.3	25.3	15.9	10.0	6.3	4.0
<b>90</b>	60.5	38.0	23.9	15.0	9.5	5.9	3.7
<b>96</b>	56.7	35.6	22.4	14.1	8.9	5.6	3.5