



## Features

Basics Contractor-Grade Kilo extrusions compatible with Basics LED strips.

### Finish

Silver anodized Channel, White plastic End Caps

### Diffuser Lens

Polycarbonate, snap-in-place, UV resistant

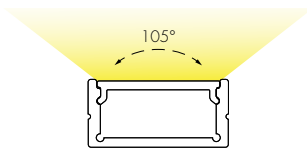
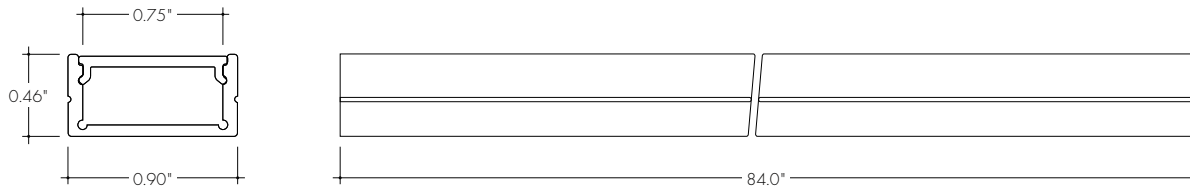
### Mounting

Fixed Clip Mounting Bracket

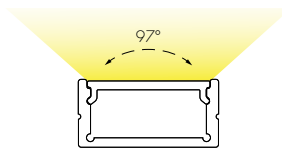
### Warranty

5 Years

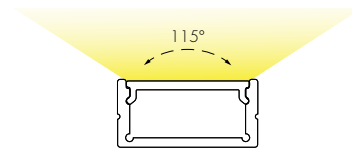
## Product Dimensions



Clear Lens



Half Frosted Lens



Frosted Lens

### INCLUDED MOUNTING ACCESSORIES

EXTRUSION LENGTH	FIXED CLIP	ADJUSTABLE	END CAP (PAIR)
84"	6	6	1

Each pair of endcaps includes 1x H0 (no wire feed hole) and 1x H1 (with hole) where applicable. Additional endcaps and mounting clips are available for purchase.

### TRANSMISSION PERCENTAGE (COMPARED TO LED TAPE WITHOUT CHANNEL)

LENS	TRANSMISSION %
Clear	80%
Half Frosted	71%
Frosted	56%

See LED tape spec sheet for lens dotting characteristics & compatibility

## Ordering code

MODEL	LENGTH	LENS	MOUNTING <sup>2</sup>	FINISH
BLC - Basics Large Channel <sup>1</sup>	84 - 84"	C - Clear HF - Half Frosted F - Frosted	FC - Fixed Clip A - Adjustable	SA - Silver Anodized

<sup>1</sup> - End Caps are included with channel, one of H0 (no hole) and one of H1 (with hole). Order additional End Caps as necessary.

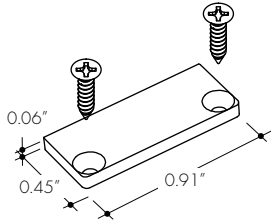
<sup>2</sup> - Mounting Clips are included with channel. Refer to chart above for provided mounting clip quantities. Order additional Mounting Clips as necessary.

## Accessories

All Channels come with a specified set of Mounting Clips and End Caps, see Ordering Code for details. Order additional Mounting Clips and End Caps as necessary.

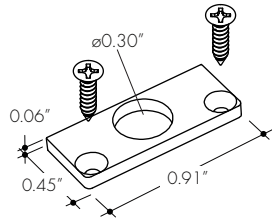
### EC-BLC-H0-SA

Silver Anodized End Cap



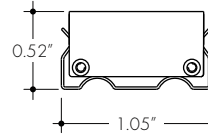
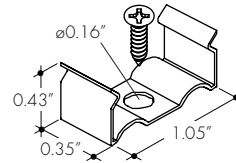
### EC-BLC-H1-SA

Silver Anodized End Cap with powerfeed opening



### MB-BLC-SS

Fixed Clip  
-FC



### MB-BLC-A-SS

Adjustable Clip  
-A

