

Features

Basics by Luminii Contractor-Grade corner 45° extrusions compatible with Basics by Luminii LED strips.

Finish

Silver anodized Channel, White plastic End Caps

Diffuser Lens

Polycarbonate, snap-in-place, UV resistant

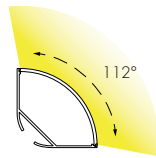
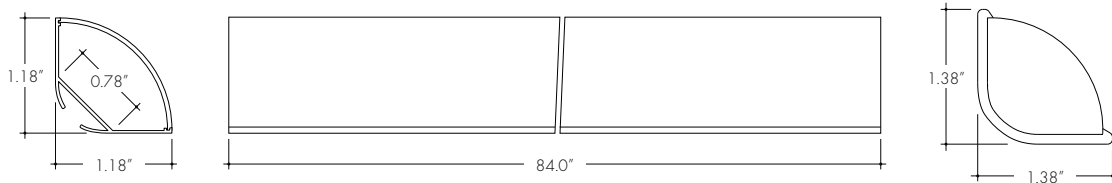
Mounting

Fixed Clip Mounting Bracket

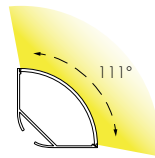
Warranty

5 Years

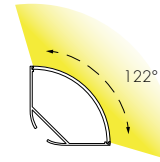
Product Dimensions



Clear Lens



Half Frosted Lens



Frosted Lens

INCLUDED MOUNTING ACCESSORIES

EXTRUSION LENGTH	MOUNTING HARDWARE	END CAP (PAIR)
84"	6	1

Each pair of endcaps includes 1x H0 (no wire feed hole) and 1x H1 (with hole) where applicable. Additional endcaps and mounting clips are available for purchase.

TRANSMISSION PERCENTAGE
(COMPARED TO LED TAPE WITHOUT CHANNEL)

LENS	TRANSMISSION %
Clear	88%
Half Frosted	80%
Frosted	69%

See LED tape spec sheet for lens dotting characteristics & compatibility

Ordering code

MODEL	LENGTH	LENS	MOUNTING ²	FINISH
B45RC - Basics Corner Round Channel ¹	84 - 84"	C - Clear HF - Half Frosted F - Frosted	FC45 - Fixed Clip 45°	SA - Silver Anodized

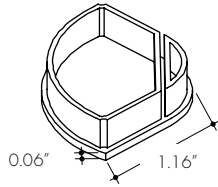
¹ - End Caps are included with channel, one of H0 (no hole) and one of H1 (with hole). Order additional End Caps as necessary.

² - Mounting Clips are included with channel. Refer to chart above for provided mounting clip quantities. Order additional Mounting Clips as necessary.

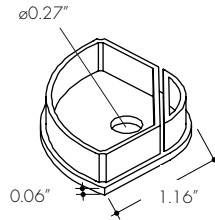
Accessories

All Channels come with a specified set of Mounting Clips and End Caps, see Ordering Code for details. Order additional Mounting Clips and End Caps as necessary.

EC-B45RC-H0-WH
Plastic End Cap



EC-B45RC-H1-WH
Plastic End Cap with Powerfeed Opening



MB-B45RC-WH
Fixed Clip 45°
-FC45

