

### Features

The ALS20 Channel is a linear aluminum extrusion that has been designed to fit many LED lighting needs. Multiple lens options allow for great flexibility and adaptability for any application. Extrusion and diffuser lenses are also field cuttable. Substantial aluminum mass in profile provides excellent heat sink for high power LEDs. Linear connector available for extending extrusion runs.

#### Finish

Silver Anodized

#### Diffuser Lens

Polycarbonate, snap-in-place, UV resistant

#### Mounting

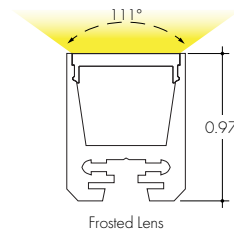
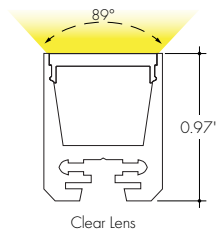
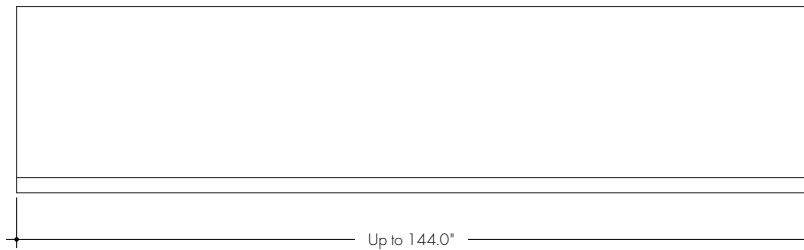
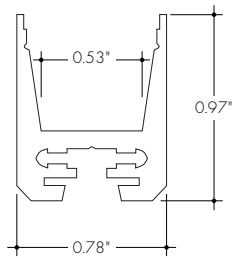
Multiple mounting clip options ordered separately

#### Warranty

7 Years

**Declare.**

### Product Dimensions



#### INCLUDED MOUNTING ACCESSORIES

EXTRUSION LENGTH	FIXED CLIP	END CAP PAIR
78"	78"	1
118"	118"	1

Each pair of endcaps includes 2x H3 (no wire feed hole) end caps where applicable. Additional endcaps and mounting clips are available for purchase.

#### TRANSMISSION PERCENTAGE (COMPARED TO LED TAPE WITHOUT CHANNEL)

LENS	TRANSMISSION %
Clear	54%
Frosted	49%

See LED tape spec sheet for lens dotting characteristics & compatibility

### Ordering Code

MODEL	LENGTH	LENS	MOUNTING <sup>2</sup>	FINISH
ALS20 - ALS20 Channel <sup>1</sup>	78 - 78" 118 - 118" <sup>3</sup>	C - Clear F - Frosted	FC - Fixed Clip	SA - Silver Anodized

<sup>1</sup> - End Caps are included with channel, one of H3 (no hole) and one of H4 (with hole). Order additional End Caps as necessary.

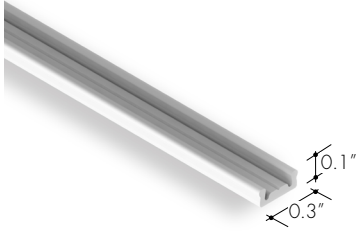
<sup>2</sup> - Mounting Clips are included with channel. Refer to chart above for provided mounting clip quantities. Order additional Mounting Clips as necessary.

<sup>3</sup> - For Channels and Lenses over 96", incremental shipping charges will apply.

All Channels come with a specified set of Mounting Clips and End Caps, see Ordering Code for details. Order additional Mounting Clips and End Caps as necessary.

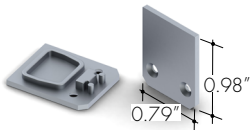
### Mounting Accessories

**MC-ALS-118**  
Fixed Clip, 118"  
-FC



### End Caps

**EC-ALS20-H3-SA**  
Silver Anodized End Cap



### Connectors

**LC-SPL**  
Straight joiner



**90LC-SPL**  
90° joiner

