

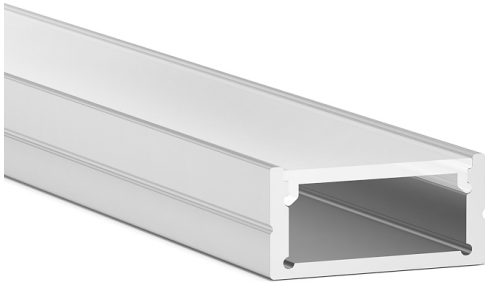
Features

Small Anodized extrusions compatible with some OAX light engines.

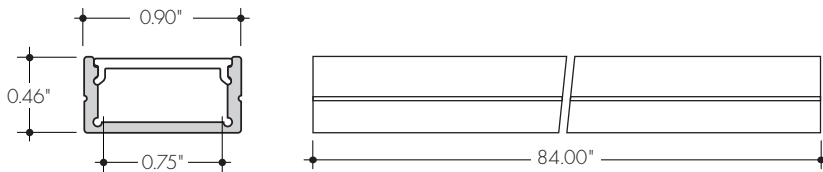
Finish
Silver anodized

Mounting
Multiple mounting clip options ordered separately

Diffuser Lens
Acrylic, snap-in-place, UV resistant



Product Dimensions



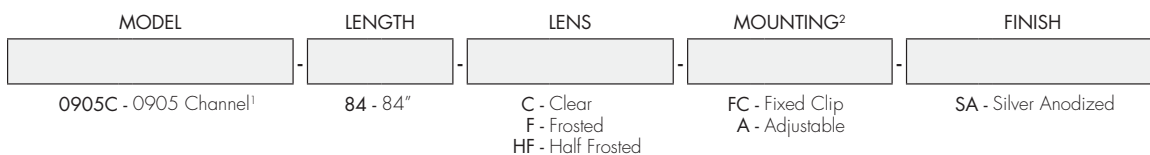
Clear, Frosted, and Half Frosted Lens

INCLUDED MOUNTING ACCESSORIES

EXTRUSION LENGTH	FIXED CLIP	ADJUSTABLE	ENDCAP PAIR
84"	6	6	1

Each pair of endcaps includes 1x H0 (no wire feed hole) and 1x H1 (with hole) where applicable. Additional endcaps and mounting clips are available for purchase.

Ordering code

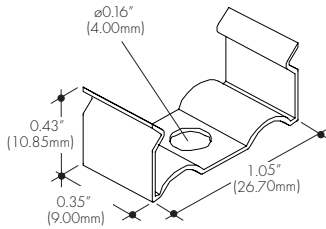


1 - End Caps are included with channel, one of H0 (no hole) and one of H1 (with hole). Order additional End Caps as necessary.
2 - Mounting Clips are included with channel. Refer to chart above for provided mounting clip quantities. Order additional Mounting Clips as necessary.

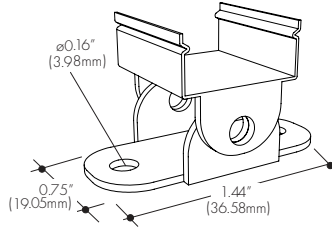
All Channels come with a specified set of Mounting Clips and End Caps, see Ordering Code for details. Order additional Mounting Clips and End Caps as necessary.

Mounting Clips

MC-09XXC
Fixed Clip
-FC

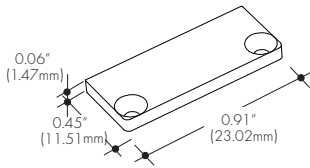


RC-09XXC
Adjustable Clip
-A



End Caps

EC-0905C-H0
Silver Anodized End Cap



EC-0905C-H1
Silver Anodized End Cap with powerfeed opening

