

instruction manual

Retro & Microspot LED Constant Voltage

Retro/Microspot 11	4.9W	405lm
Retro/Microspot 16	9W	700lm

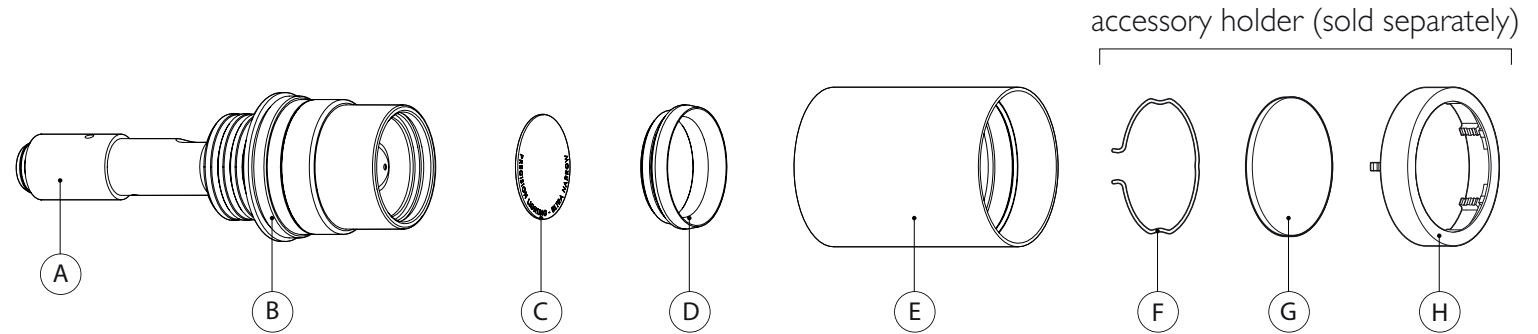
These instructions cover procedures for all versions of Retro and Microspot LED



KEY PRODUCT FEATURES

A	Jack Plug	E	Snoot
B	Luminaire Body	F	Accessory Clip
C	Micro lens	G	Accessory (up to 2)
D	Micro lens Cap	H	Double Accessory Holder

COMPATIBLE POWER SUPPLY	ORDER CODE	MAX 16 SERIES LUMINAIRE QUANTITY	MAX 11 SERIES LUMINAIRE QUANTITY
TCI 20W 1-10V	PSCV-20-24-A-TC	1	1
TCI 15W 1-10V	PSCV-15-24-A-TC	1	1
TCI 16W DALI	PSCV-16-24-D-TC	1	1
TCI 15W DALI	PSCV-15-24-D-TC	1	1
Osram 100W 1-10V	PSCV-100-24-A-OS	9	14
Osram 130W 1-10V	PSCV-130-24-A-OS	12	16
Eldoled 100W DALI	PSCV-100-24-D-EL	10	15



IMPORTANT SAFETY INFORMATION

READ ALL INSTRUCTIONS BEFORE USING THESE PRODUCTS. SAVE THESE INSTRUCTIONS FOR LATER REFERENCE.

- All systems must be installed by a suitably qualified professional only. Installations must conform to national installation and accident prevention regulations.
- Do not install any fixture closer than 150mm from any combustible material. Do not install these products in a damp or wet location.
- To reduce the risk of fire and burns, do not install these products where exposed bare conductors can be shorted or contact any conductive materials. Do not conceal or extend exposed conductors through a building wall.
- Ensure all connections are tight. Bad connections can cause overheating, arcing and a potential fire risk.
- Always use appropriate optics and ensure they are fitted securely.
- Use only as described in this Precision Lighting manual.
- Use only Precision Lighting recommended accessories.
- Ensure that the luminaire is switched off at mains supply before installing or removing.
- Luminaires may be extremely hot, allow to cool before touching.
- These are LED luminaires, they must be connected to an appropriate PSU.
- Regular cleaning of these products is important. Switch off at mains supply and allow to cool before touching. Clean fittings with a soft damp cloth and allow to dry before reconnecting power supply

NOTE Model shown is the Retro 11 LED. The same procedures apply for Retro 16 LED.

1. Installing the luminaire using Jack Plug connector

WARNING switch off power to mains before installation.

Insert Jack Plug into monopoint or track system ensuring locking screws are aligned. Refer to specific system instructions for details.

Rotate jack plug collar until luminaire is securely fastened.

Note: Basis Track shown, actual system may vary. Alternative systems include Retrac, Eutrac and the Monopoint range.

See PSU datasheet for details on maximum number of luminaires per driver.

2. Installing accessories using the accessory holder

Fit up to 2 accessories into accessory holder.

Secure accessories in place using retaining clip.

Insert accessory holder into snoot until it clicks into place.

3. Removing and changing the snoot

CAUTION the luminaire may be extremely hot. Allow to cool before touching.

Twist snoot anti-clockwise and remove.

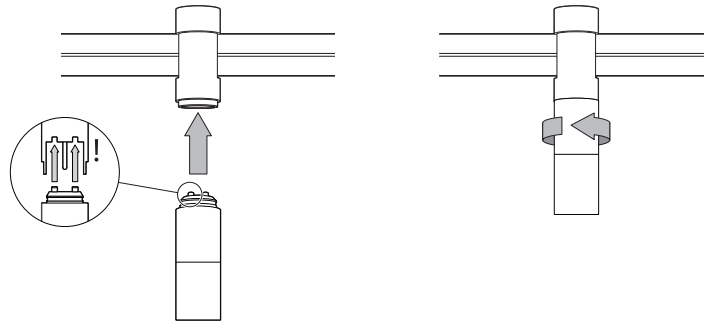
To reattach snoot twist clockwise until it reaches the end stop.

4. Changing the micro lens

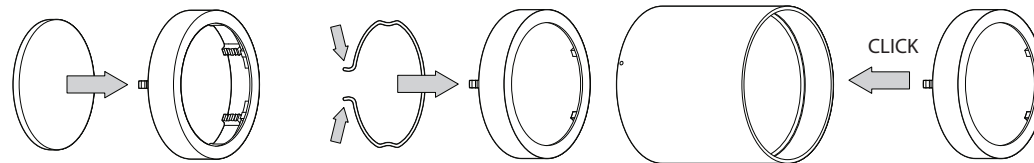
Unscrew the micro lens cap until fully detached.

Remove the micro lens and replace with alternative micro lens ensuring it is installed flat. Reattach micro lens cap.

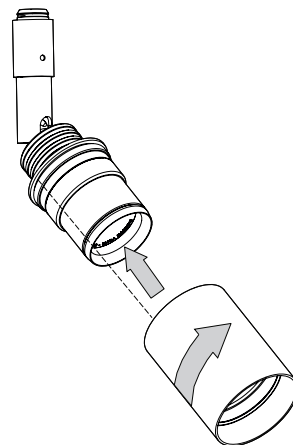
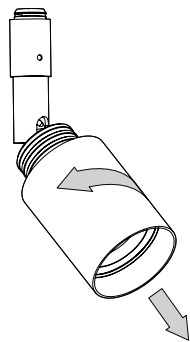
1.



2.



3.



4.

