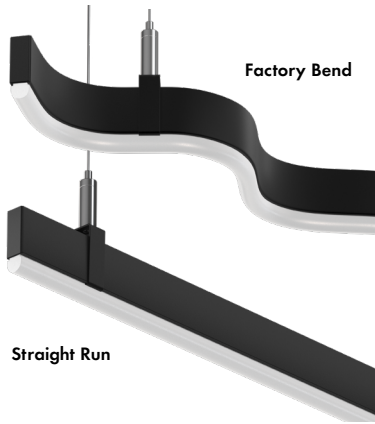
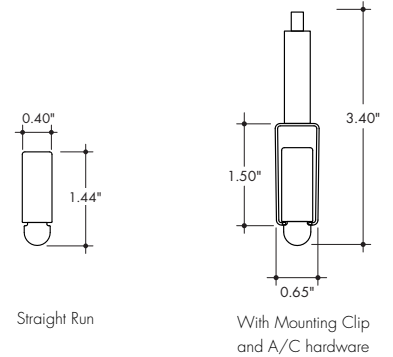


Plexineon Suspended Mount

Static White and Monochrome Colors



- Easy to install, for interior accent lighting
- Neon look providing a crisp, clear line of light visible for miles
- Creative freedom to make stunning designs, rigid construction maintains factory formed shape
- Mounting Clips and aircraft cable are included in the appropriate quantities
- Operating Temperature: -40° F to 140° F (-40° C to 60° C)
- 24VDC Class 2
- IK10 and 3G rated
- IP67 rated. IP68 rating available upon specific request
- 5 year warranty indoor, 3 year warranty outdoor



Technical Information

MODEL	Plexineon Static White (30K)	Plexineon Monochrome Colors					
		Red	Blue	Green	Magenta	Teal	Yellow
OUTPUT OPTIONS		SO					
Lumens Output (3000K)	123 lm/ft	14 lm/ft	11 lm/ft	50 lm/ft	24 lm/ft	60 lm/ft	62 lm/ft
Average Power Consumption (for a 4" section)	3.2 W/ft	1.2 W/ft	1.4 W/ft	1.5 W/ft	2.6 W/ft	2.9 W/ft	2.7 W/ft
Wavelength	N/A	622 nm	468 nm	525 nm	567 nm	486 nm	563 nm
Efficacy	39 lm/W	12.1 lm/W	8.1 lm/W	33.8 lm/W	9.2 lm/W	20.9 lm/W	23.2 lm/W
Cut Increment		1.97"					
Max Run Length (in series)	30 ft	32ft	32ft	32ft	32ft	32ft	32ft

CCT	Multiplier (reference - 3000K)	TM-30		
		CRI	R _f	R _g
2700K	0.94	90	88	97
3000K	1.00	90	87	97
3500K	1.02	90	87	97
4000K	1.02	90	84	92

Ordering Code

MODEL	RUN LENGTH ¹	BEND	CCT	OUTPUT	LENS	MOUNTING ³	FINISH	POWERFEED POSITION/TYPE	QUOTE NUMBER ⁵
PX-Plexineon	— Run length in inches, 6" min, no max run length	SR-Straight Run EB-Factory Bend, Side/Easy Bend ²	27K-2700K 30K-3000K 35K-3500K 40K-4000K B-Blue G-Green T-Teal Y-Yellow R-Red M-Magenta	SO-Standard	F-Frosted	SP-Suspension Mount, Standard Clips SPD-Suspension Mount, Decorative Clips ⁴	GG-Gloss Grey BK-Matte Black GY-Matte Grey WH-Matte White	B-4-Male Quick Connect One End, Female Quick Connect Other End	(Leave Blank)-For SR or FB -Quote Number entered by Inside Sales used for Factory Bends and Custom Drawings

1. Static White and Monochrome colors are available in 2" increments, +/- 1/2" tolerance. Run lengths over 96" (8ft) will be made of equal sections no longer than 96".
2. Factory Bends require an Image or Drawing input at time of Quote to calculate total linear/arc length. Factory Bends require a Custom Drawing submittal at time of Order. Allow 2 weeks (typical) for Custom Drawing generation/confirmation process.

3. Standard mounting clip included approximately every 30" of linear/arc length.
4. Decorative Clips match the fixture finish, included approximately every 18" of linear/arc length.
5. Quote Number correlates the Quote to the Custom Drawing. If a single Quote includes different designs having the same length, add -1, -2, -3, etc. to the end of the Quote Number for each unique configuration.

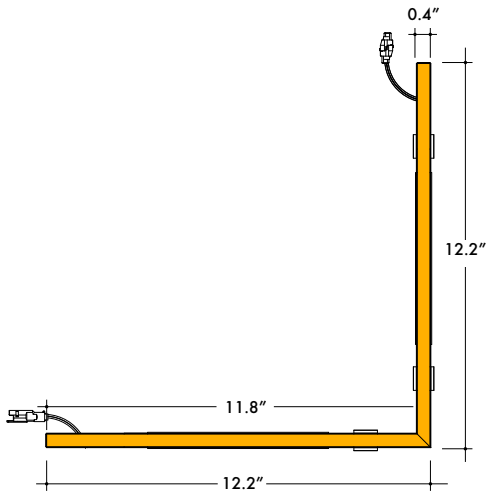
Plexineon Suspended Mount

Static White and Monochrome Colors



Corner Dimensions

HC-SR
Horizontal Corner



Ordering Code

MODEL	CORNER ¹	CCT	OUTPUT	LENS	MOUNTING ¹	FINISH	POWERFEED POSITION/TYPE
PX - Plexineon	HC-SR - Horizontal Corner	27K - 2700K 30K - 3000K 35K - 3500K 40K - 4000K B - Blue G - Green T - Teal Y - Yellow R - Red M - Magenta	SO - Standard	F - Frosted	SP - Suspension Mount, Standard Clips SPD - Suspension Mount, Decorative Clips ²	GG - Gloss Grey BK - Matte Black GY - Matte Grey WH - Matte White	B-4 - Male Quick Connect One End, Female Quick Connect Other End

1. Corners include 3 mounting clips.
2. Decorative Clips match the fixture finish.

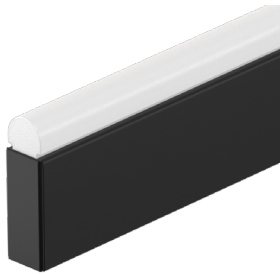
Plexineon Suspended Mount

Static White and Monochrome Colors



Finish Options

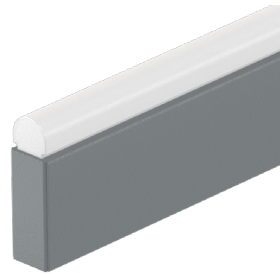
BK
Matte Black Finish



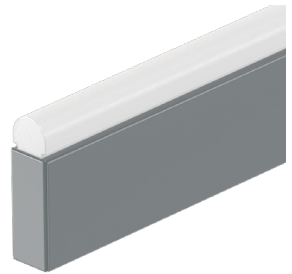
WH
Matte White Finish



GY
Matte Grey Finish



GG
Gloss Grey Finish

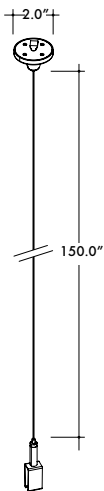


Suspension Hardware

- Suspension Hardware is included with Plexineon runs in the appropriate quantity, every 30" of linear/arc length
- Standard Clips have a stainless steel finish, Decorative Clip finishes match the fixture finishes
- Canopy Finishes come in White.

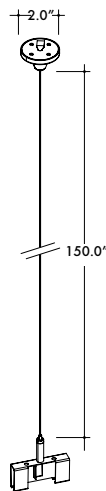
SP/SPD

SC-1MP2-SCL-0X
Suspension Kit with Single Clip,
Ø2.0" canopy, 150" A/C Cable



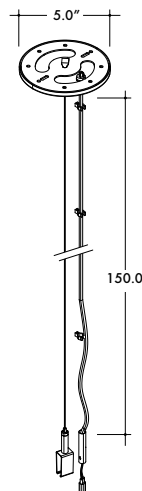
Used approximately every 30" of linear/arc length

SC-1MP2-DCL-0X
Suspension Kit with Joiner Clip,
Ø2.0" canopy, 150" A/C Cable



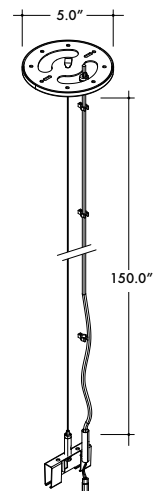
Use to join two fixtures together in the middle of a Suspended Run

SC-1FC5-SCL-C2-0X
Powerfeed Canopy Suspension Kit with
Single Clip, Ø5.0" canopy, 150" A/C Cable



Used at the start of every Suspended Run

SC-1FC5-DCL-C2-0X
Powerfeed Canopy Suspension Kit with Joiner
Clip, Ø5.0" canopy, 150" A/C Cable



Used to join two fixtures together and to drop power in the middle of a Suspended Run

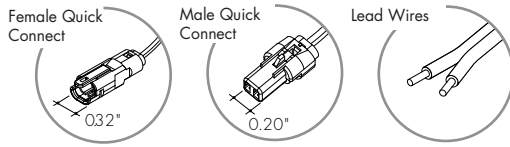
OX	Clip Finish	Canopy Finish
00	Stainless Steel	<input type="checkbox"/> White
01	Matte Black	<input type="checkbox"/> White
02	Matte Grey	<input type="checkbox"/> White
03	<input type="checkbox"/> Matte White	<input type="checkbox"/> White

Plexineon Suspended Mount

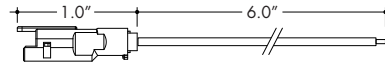
Static White and Monochrome Colors



Powerfeed and Connectors

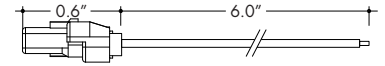


60-H-0001-08
Female Quick Connect
with 6" flying leads



Female Quick Connect with flying leads can be connected to the Power Supply at the start of a run. Can also be used with the Male Quick Connect to make wire jumpers. Use color suffix -08 for Black, -09 for Grey, or -10 for White.

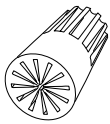
60-H-0002-08
Male Quick Connect
with 6" flying leads



Male Quick Connect with flying leads can be used to make wire jumpers. Use color suffix -08 for Black, -09 for Grey, or -10 for White.

Additional Material

60-12-22AWGSBWN
Weatherproof Wire Nut
Silicone Filled



Order 2 per Power Supply.

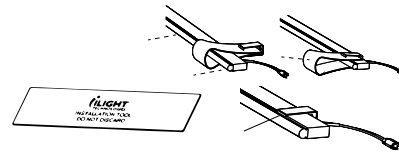
55-STW02-050-00
50 ft of 14 gauge wire Black jacket,
2 conductors



Sunlight, moisture resistant, and flame retardant PVC jacket per UL 1277

70-TOL02-001-01

Mounting Clip Installation Tool



Use for installation of Plexineon into Mounting Clips

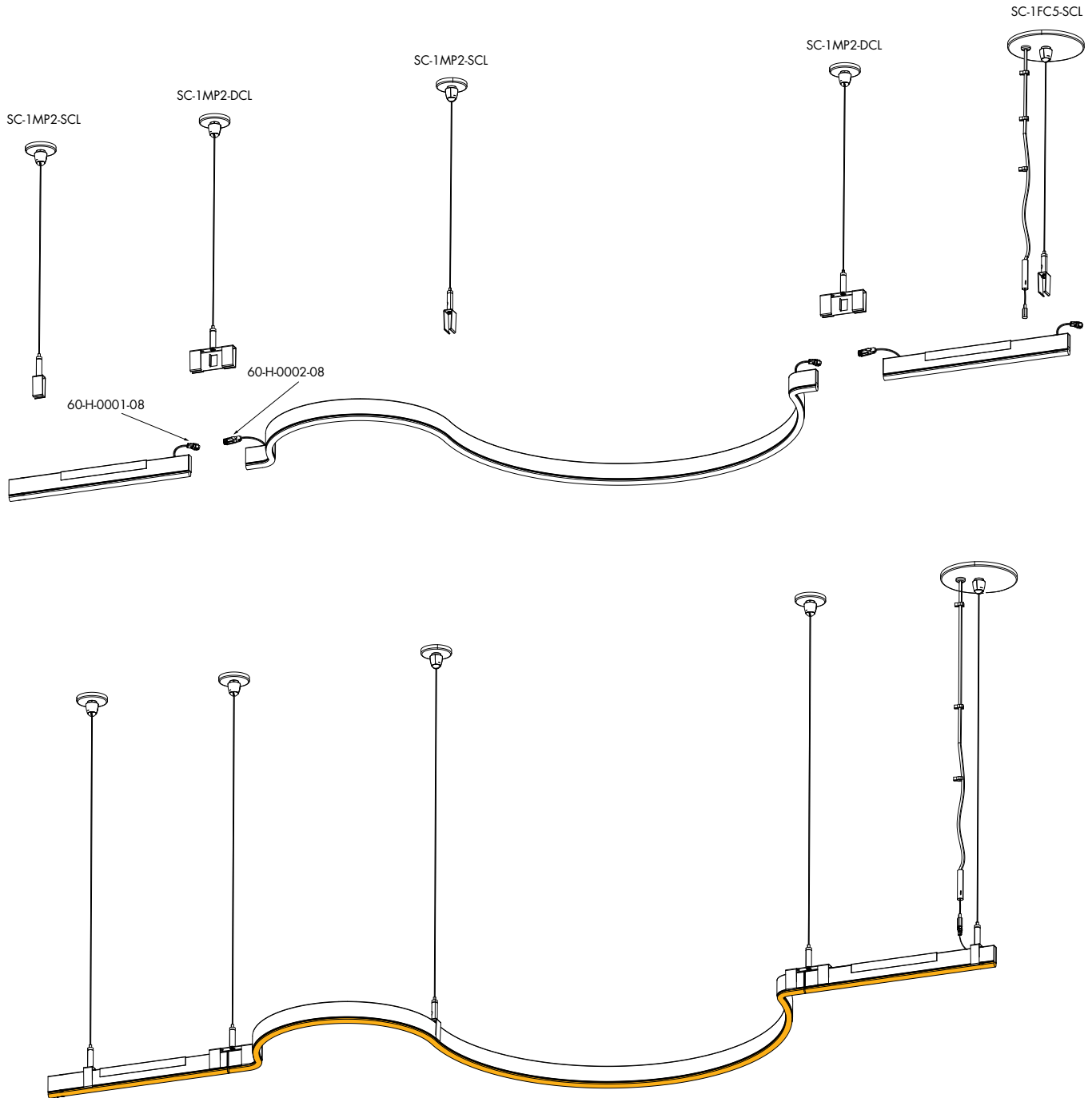
Plexineon Suspended Mount

Static White and Monochrome Colors

Sample Layout

PX-120-EB-30K-SO-F-SP-GG-B-4-QXXXXX

Plexineon Factory Bend, Suspended Mounting Clips



Plexineon Suspended Mount

Static White and Monochrome Colors

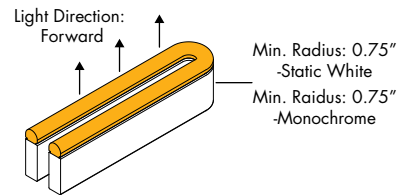


Factory Bends

- Require Custom Drawing submittal and approval.

EB

Factory Bend, Side/Easy Bend



Plexineon Suspended Mount

Static White and Monochrome Colors



Common Applications

Custom Indoor Designs | Coves | Signs | Building Facades | Lobbies | Hallways | Statement Pieces | Restaurants
Corporate Offices | Schools | Residential Towers | Parking Garages | Hotels | Bridges | Benches | Airports



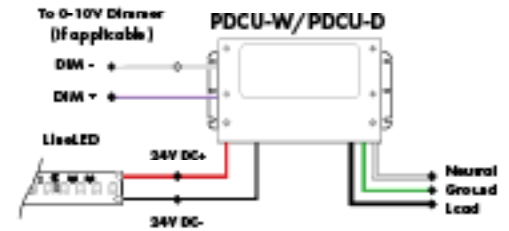
Power Supplies

See Power Supply Instructions and spec sheet for wiring information. For a complete list of compatible dimmers, see [Compatible Dimming Chart](#) on the Resources page.

Universal Power Supply 1% 120VAC - 277VAC

MODEL	POWER	OUTPUT
PDCU-D - IP20 Dry Series	30 - 30W 60 - 60W 96 - 96W 3X96 - 3X96W	24 - 24VDC
PDCU-W - IP66 Wet Series	96 - 96W 3X96 - 3X96W	

0-10V dims down to 1%, MLV/ELV/TRIAC dims down to 1%.
For a complete list of compatible dimmers, see [Compatible Dimming Chart](#) on the Resources page.

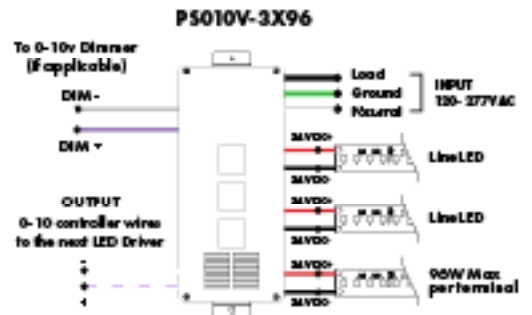
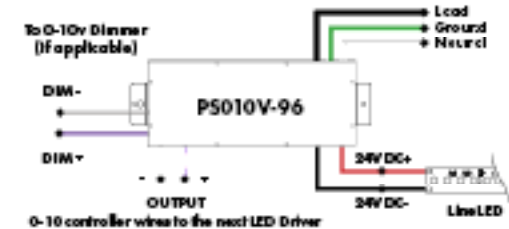


MODELS	PDCU-W 90W	PDCU-W 3X96W	PDCU-D 30W	PDCU-D 60W	PDCU-D 90W	PDCU-D 3X96W
Length	8.66"	11.85"	6.10"	7.93"	8.25"	9.57"
Width	3.73"	4.32"	3.35"	3.35"	4.10"	5.94"
Depth	1.61"	1.81"	1.33"	1.32"	1.56"	1.13"

0-10V Dimming Power Supplies 0.1% 120VAC - 277VAC

MODEL	POWER	OUTPUT	DIMMING
PS010V - 0-10V Power Supply dims down to 0.1%	96 - 96 Watt 3X96 - 3 X 96Watt	24 - 24VDC	LIN - linear LOG - logarithmic

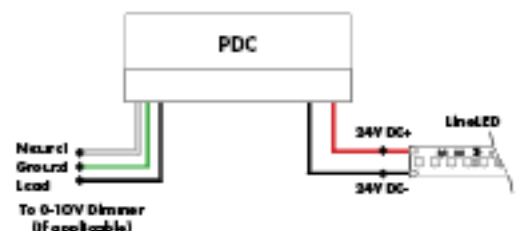
MODELS	90W	3X96
Length	14.40"	15.75"
Width	5.20"	6.62"
Depth	2.60"	4.95"



Triac, MLV, & ELV Compatible Dimmers

MODEL	POWER	OUTPUT
PDC - (IP20) Power Supply	96 - 96 Watts	24 - 24 VDC

MODELS	90W
Length	8.25"
Width	4.10"
Depth	1.56"



Power Supplies

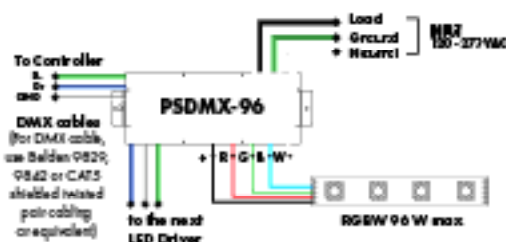
See Power Supply instructions and spec sheet for wiring information. For a complete list of compatible dimmers, see Compatible Dimming Chart on the Resources page.

DMX Dimming Power Supplies 120VAC - 277VAC

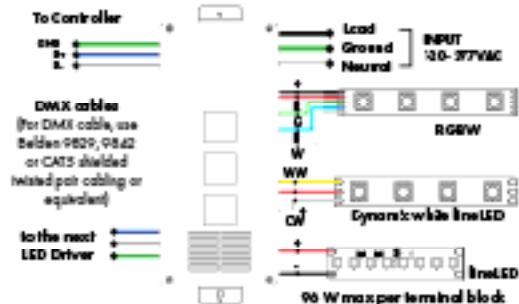
MODEL	POWER	OUTPUT
PSDMX - DMX Power Supply dims down to 0%	96 - 96 Watt 3X96 - 3 X 96 Watt	24 - 24VDC

Features oldLED's LINEARdrive configurable dimmable drivers

MODELS	96W	3X96
Length	14.40"	15.75"
Width	5.20"	6.62"
Depth	2.60"	4.95"



PSDMX-3X96

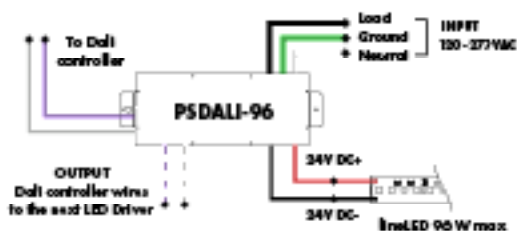


DAI Dimming Power Supplies 120VAC - 277VAC

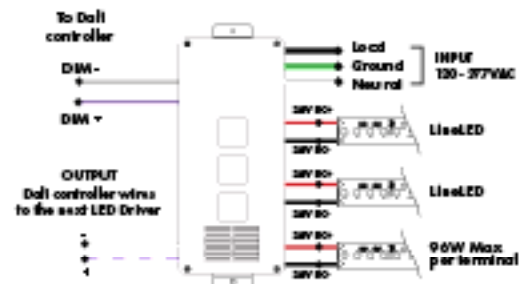
MODEL	POWER	OUTPUT
PSDALI - DAI Power Supply dims down to 0%	96 - 96 Watt 3X96 - 3 X 96 Watt	24 - 24VDC

Features oldLED's LINEARdrive configurable dimmable drivers

Model	96W	3X96
Length	14.40"	15.75"
Width	5.20"	6.62"
Depth	2.60"	4.95"



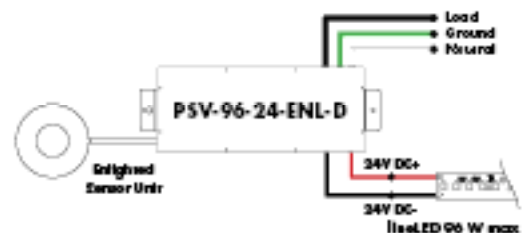
PSDALI-3X96



Enlighted Enabled Dimming Power Supplies 120VAC - 277VAC

MODEL	POWER	OUTPUT	DIMMING	LOCATION
PSV - PSV Series	96 - 96 Watt	24 - 24 VDC	ENL - Enlighted Dimming dims down to 0%	D - Damp

Model	96W
Length	14.40"
Width	5.20"
Depth	2.60"



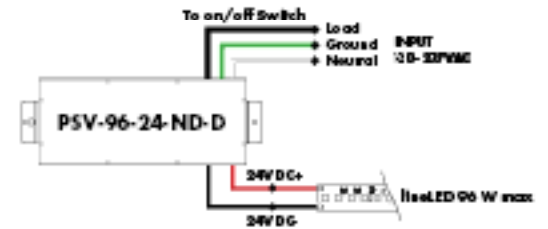
Power Supplies

See Power Supply Instructions and spec sheet for wiring information. For a complete list of compatible dimmers, see Compatible Dimming Chart on the Resources page.

Non-Dimming Power Supply 120VAC - 277VAC

MODEL	POWER	OUTPUT	DIMMING	LOCATION
PSV - PSV Series	96 - 96Watt	24 - 24 VDC	U2ND - Non Dimming	D - Damp

MODELS	00W
Length	14.40"
Width	5.20"
Depth	2.60"



LUTRON.

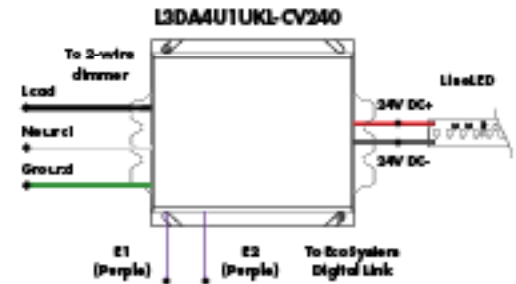
Lumini is a Lutron OEM Advantage Partner

Lutron Power Supplies 1%

MODEL
L3DA4U1UKL-CV240

Hilma™ 1% EcoSystem Voltage LED driver
80W max

MODELS	L3DA4U1UKL-CV240
Length	4.98"
Width	4.00"
Depth	2.62"



LUTRON.

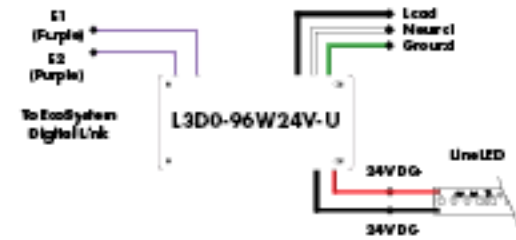
Lumini is a Lutron OEM Advantage Partner

Lutron Power Supplies 0.1%

MODEL
L3D0-96W24V-U

Hilma™ 0.1% EcoSystem Voltage LED Driver with SoftOn, Fade-to-Black™
96W max

MODELS	L3D0
Length	10.50"
Width	5.50"
Depth	2.00"



In-Ground Power Supplies

MODEL	POWER	OUTPUT	INPUT
IG - In-ground CVE Series	CVE - EVV Dimming DALI - adds LED Dim dimming Both dim down to 0%	96X2 - 2 X 96Watt	24 - 24 VDC
			Blank - 120V 277 - 240/277 V

MODELS	Dual Circuit
Length	8.40"
Width	8.30"
Depth	8.10"

