

LETO 44

SUSPENDED CYLINDER
TUNABLE WHITE & WARM DIM

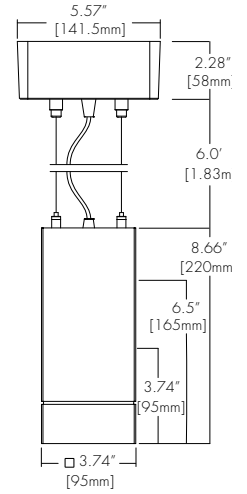


Features

- Faceted and Smooth reflectors provide beam spreads between 15° to 60°.
- Four output options available up to 2000 lumens.
- Nine driver selections available to cover wide range of applications.
- Five year warranty.

Finish Options

- White
- Black
- Silver
- Mocha
- Charcoal
- Cerulean
- Firebrick



Technical Information

TYPE	WD1830					TW2765
	700 lm	1000lm	1500lm	2000lm	1500lm	
OUTPUT OPTIONS	700 lm	1000lm	1500lm	2000lm	1500lm	
Fixture wattage	7.2 W	11.4 W	16.3 W	21.6 W	22.6 W	
Delivered Lumen	719 lm	1154 lm	1628 lm	2063 lm	1786 lm	
Efficacy	100 lm/W	101 lm/W	100 lm/W	96 lm/W	79 lm/W	
Center Beam Candlepower (15° Faceted Reflector)	3277 cd	5260 cd	7421 cd	9404 cd	7432 cd	

CCT	TM-30				
	CRI	R _f	R _g	R ₉	
1800K	94	90	93	61	
3000K	94	89	97	72	
2700K	91	90	96	59	
6500K	93	87	97	73	

Ordering Code

Integral Driver Example: Fixture LET44-S-S-07-WD1830-F15-NA-WH-WH-SQ-WH-SS2-WH-PHSD-NA

Remote Driver Example: Fixture LET44-S-S-07-WD1830-F15-NA-WH-WH-SQ-WH-SS2-WH-PHSD-NA-HRM-LET44-S-07-WD1830-PHSD-NA

Fixture

MODEL	TYPE	SIZE	OUTPUT	CCT	OPTIC	ACCESSORY	BODY FINISH	BAFFLE FINISH
LET44 - Leto 44	S - Suspended	S - Small M - Medium L - Large	07 - 700 10 - 1000 15 - 1500 ² 20 - 2000	WD1830 - Warm Dim, 1800K-3000K TW2765 - Tunable White, 2700K-6500K ^{2,11,12}	F15 - 15 Degree, Faceted F30 - 30 Degree, Faceted F45 - 45 Degree, Faceted F60 - 60 Degree, Faceted S30 - 30 Degree, Smooth S45 - 45 Degree, Smooth	NA - No Accessory CL - Clear Lens DL - Diffusing Lens HC - Honeycomb Louver SL - Salite Lens	Standard WH - White BK - Black SL - Silver Premium ³ MA - Mocha CC - Charcoal CR - Cerulean FB - Firebrick	Standard WH - White BK - Black SL - Silver Premium ³ MA - Mocha CC - Charcoal CR - Cerulean FB - Firebrick

CANOPY/ HOUSING	CANOPY FINISH	SUSPENSION TYPE	SUSPENSION FINISH	DRIVER	DRIVER OPTIONS
SQ - Square	Standard WH - White BK - Black SL - Silver Premium ³ MA - Mocha CC - Charcoal CR - Cerulean FB - Firebrick	2AF - 2AC + Feed Cable SS2 - Solid Stem, 2ft SS3 - Solid Stem, 3ft SS6 - Solid Stem, 6ft HS2 - Hang Straight, 2ft HS3 - Hang Straight, 3ft HS6 - Hang Straight, 6ft POA - 2 Powered Aircraft, 6ft	Standard NA - None ⁴ CL - Clear WH - White BK - Black SL - Silver ⁵ Premium ³ MA - Mocha ⁵ CC - Charcoal ⁵ CR - Cerulean ⁵ FB - Firebrick ⁵	PHSD - Forward/Reverse Phase, 1% Dimming, 120V Only 0105 - 0-10V, 1% Dimming, 120/277V 0103 - 0-10V, 1% Dimming, 347V Only 010L - EldoLED, 0-10V, Linear, 0.1% Dimming, 120/277V ⁶ 010G - EldoLED, 0-10V, Log, 0.1% Dimming, 120/277V ⁶ DALI - EldoLED, DALI Protocol 2, DT-6, 0.1% Dimming, 120/277V ⁶ DALI8 - EldoLED, DALI Protocol 2, DT-8, 0.1% Dimming, 120/277V ⁸ LUTE - Lutron Hilume Ecodigital, 1% Dimming, 120V/277V ^{6,7} DMX - EldoLED, DMX, 0.1% Dimming, 120V/277V ⁸	NA - None EMG - Emergency Driver ^{8,9} CSMB - Casambi ¹⁰ AWNR - Athena ¹⁰

1 - Size Small max output is 1500 lumens.
2 - TW2765 only available with 1500 lumens.
3 - Premium finishes may have extended lead times. Custom RALs are available, please consult Inside Sales with specific request.
4 - Must select NA None when POA 2 Powered Aircraft Suspension is selected.
5 - These finishes are only available with SSX Solid Stem or HSX Hang Straight Suspension.
6 - Requires SQ square canopy for integral driver, otherwise remote mounted.
7 - LUTE driver is not available at 700 lumens.

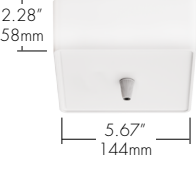
8 - All drivers remote mounted when using DALI8 driver, DMX driver, or EMG driver options.
9 - Emergency option comes prewired from factory with driver in remote housing. 8W of continuous power provided for a minimum of 90 minutes. Must be installed within 30 feet of luminaire using 18 AWG wire. Not available with 0103, DMX, DALI8 or LUTE driver.
10 - AWNR/CSMB only available with 0105 driver.
11 - TW2765 only available with Drivers 010L/010G/DALI8/DMX. Not available with EMG driver option.
12 - TW2765 requires HRM - Remote Power Supply.

CONTACT FACTORY FOR MORE OPTIONS.

Canopy

SQ

Square Canopy

	Integral Drivers	Remote Drivers
	010S	DAI8
	0103	DMX
	PHSD	
	010L	
	010G	
	DAI	
	LUTE	

Please see next page for Remote Driver Housing details.

Suspension

2AF

2 Aircraft + Feed Cable



SSX (2', 3', 6' max)

Solid Stem



HSX (2', 3', 6' max)

Hang Straight Solid Stem



Maximum Slope: 15°

POA

2 Powered Aircraft



Lens

CL

Clear Lens



DL

Diffusing Lens



HC

Honeycomb



SL

Solite Lens



Optics

FXX (15°, 30°, 45°, 60°)

Faceted Reflector



SXX (30°, 45°)

Smooth Reflector



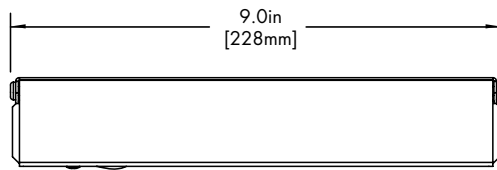
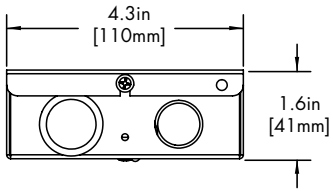
Remote Driver Housing

Depending on the options selected in the order code on page 1, a Remote Driver Housing may be required. This will automatically be generated and put on your order as necessary.

REMOTE DRIVER	MODEL	OUTPUT	CCT	DRIVER	DRIVER OPTIONS
HRM-Housing, Remote	LET44-S-Leto 44 Suspended	Same as Fixture	Same as Fixture	Same as Fixture	Same as Fixture

Maximum mounting distance to luminaire using 18 AWG wire								
PHSD	010S	0103	010L	010G	DALI	DALI8	LUTE	DMX
16'	16'	16'	72'	72'	72'	72'	15'	149'

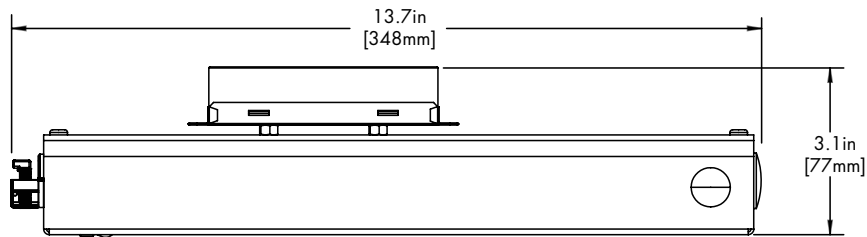
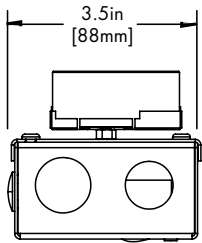
HRM Double



Driver
DALI8
DMX

EMG Emergency Driver

120 minute EMG operation time.



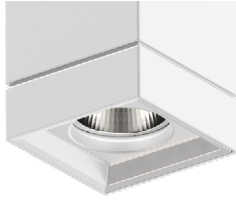
Driver
EMG

Standard Finish

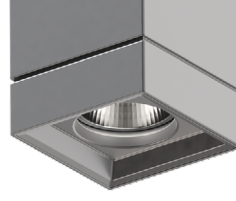
BK
Black



WH
White



SL
Silver



Premium Finish

Two tone with Black Baffle Finish. Any combination may be used for baffle and body finishes.

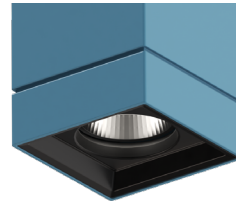
MA
Mocha



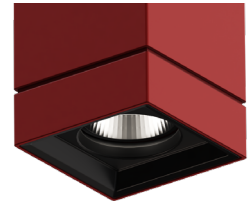
CC
Charcoal



CR
Cerulean



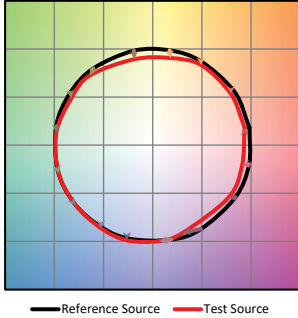
FB
Firebrick



TM-30

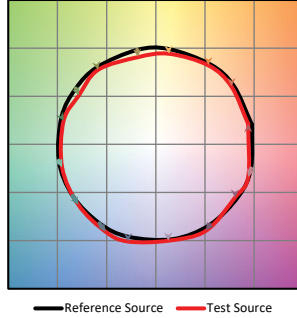
Warm Dim 1800K

COLOR VECTOR GRAPHIC



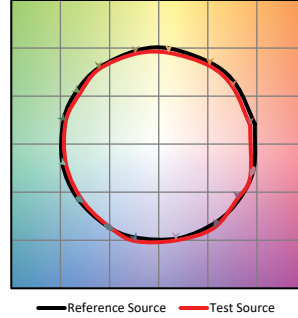
Warm Dim 3000K

COLOR VECTOR GRAPHIC



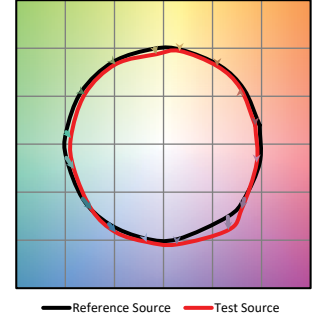
Tunable White 2700K

COLOR VECTOR GRAPHIC



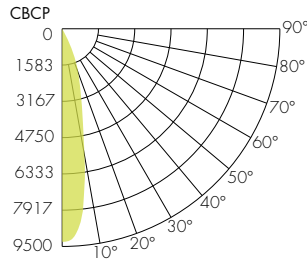
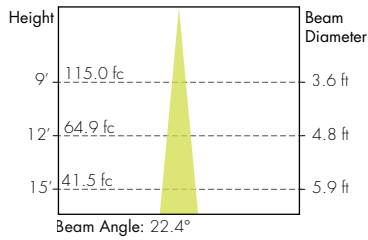
Tunable White 6500K

COLOR VECTOR GRAPHIC

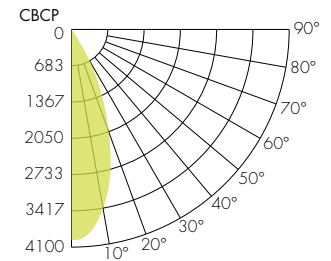
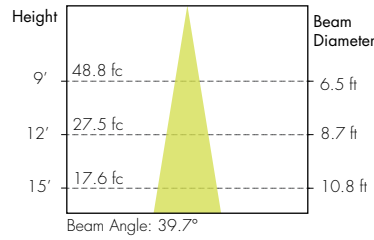


Photometry

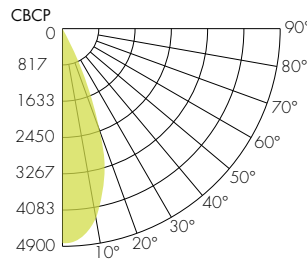
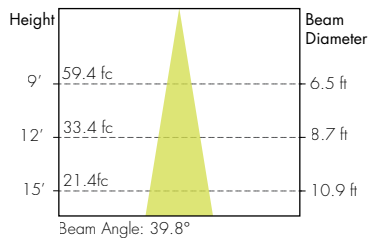
15° Faceted Reflector



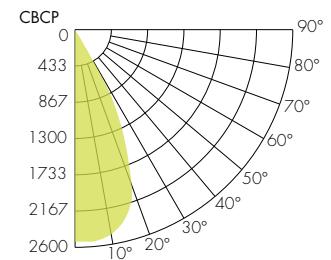
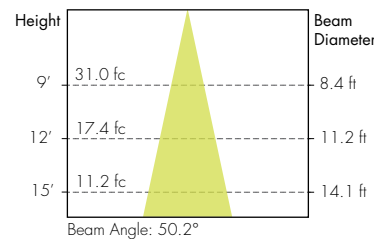
30° Smooth Reflector



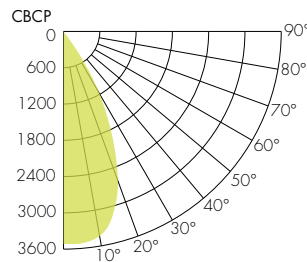
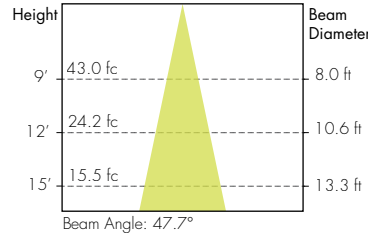
30° Faceted Reflector



45° Smooth Reflector



45° Faceted Reflector



60° Faceted Reflector

