

LETO 44

SUSPENDED UP/DOWN CYLINDER

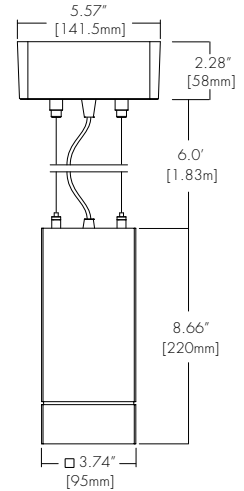


Features

- Faceted and Smooth reflectors provide beam spreads between 15° to 60°.
- Two output options available up to 1000 up and 1000 lumens down.
- Nine driver selections available to cover wide range of applications.
- Five year warranty.

Finish Options

- White
- Black
- Silver
- Mocha
- Charcoal
- Cerulean
- Firebrick



Technical Information

OUTPUT OPTIONS		0707	1010
DOWN	Fixture wattage*	6.0 W	9.1 W
	Delivered Lumen	693 lm	992 lm
	Efficacy	115 lm/W	109 lm/W
	Center Beam Candlepower (15° Faceted Reflector)	4517 cd	6466 cd
UP	Fixture wattage	7.1 W	10.9 W
	Delivered Lumen	564 lm	785 lm
	Efficacy	79 lm/W	72 lm/W

CCT	Multiplier	CRI	TM-30		
			R _f	R _g	R _o
2500K	0.80	93+	93	102	50+
2700K	0.92	93+	92	100	50+
3000K	0.97	93+	92	103	50+
3500K	1.00	93+	93	102	50+
4000K	1.07	93+	92	101	50+
6500K	1.05	93+	92	101	50+

*This is wattage for up or down only.

Integral Driver Example: Fixture LET44-S-L-0707-25K-F15-NA-WH-WH-SQ-WH-2AF-WH-PHSD-NA
 Remote Driver Example: Fixture LET44-S-L-0707-25K-F15-NA-WH-WH-SQ-WH-2AF-WH-PHSD-NA-HRM-LET44-S-O7-25K-PHSD-NA

Ordering Code

Fixture

MODEL	TYPE	SIZE	OUTPUT	CCT	OPTIC	ACCESSORY ¹	BODY FINISH	BAFFLE FINISH
LET44-Leto 44	S-Suspended	L-Large	0707-700/700 1010-1000/1000	25K-2500K 27K-2700K 30K-3000K 35K-3500K 40K-4000K 65K-6500K	F15-15 Degree, Faceted F30-30 Degree, Faceted F45-45 Degree, Faceted F60-60 Degree, Faceted S30-30 Degree, Smooth S45-45 Degree, Smooth	NA-No Accessory CL-Clear Lens DL-Diffusing Lens HC-Honeycomb Louver SL-Solite Lens	Standard WH-White BK-Black SL-Silver Premium ² MA-Mocha CC-Charcoal CR-Cerulean FB-Firebrick	Standard WH-White BK-Black SL-Silver Premium ² MA-Mocha CC-Charcoal CR-Cerulean FB-Firebrick

CANOPY/ HOUSING	CANOPY FINISH	SUSPENSION TYPE	SUSPENSION FINISH	DRIVER	DRIVER OPTIONS
SQ-Square	Standard WH-White BK-Black SL-Silver Premium ² MA-Mocha CC-Charcoal CR-Cerulean FB-Firebrick	2AF-2AC + Feed Cable POA-2 Powered Aircraft, 6ft	Standard NA-None ³ CL-Clear WH-White BK-Black SL-Silver Premium ² MA-Mocha CC-Charcoal CR-Cerulean FB-Firebrick	PHSD-Forward/Reverse Phase, 1% Dimming, 120V Only 010S-0-10V, 1% Dimming, 120/277V 0103-0-10V, 1% Dimming, 347V Only 0101-EldoLED, 0-10V, Linear, 0.1% Dimming, 120/277V 010G-EldoLED, 0-10V, Log, 0.1% Dimming, 120/277V DALI-EldoLED, DALI Protocol 2, DT-6, 0.1% Dimming, 120/277V DALI8-EldoLED, DALI Protocol 2, DT-8, 0.1% Dimming, 120/277V LUTE-Lutron Hilume Ecodigital, 1% Dimming, 120V/277V DMX-EldoLED, DMX, 0.1% Dimming, 120V/277V ⁴	NA-None EMG-Emergency Driver ⁵ CSMB-Casambi ⁶ AWNRR-Aithena ⁶

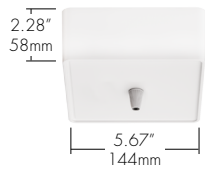
1 - Accessory only installed in bottom light
 2 - Premium finishes may have extended lead times. Custom RALs are available, please consult Inside Sales with specific request.
 3 - Must select NA None when POA 2 Powered Aircraft Suspension is selected.
 4 - All drivers remote mounted when using DALI8 driver, DMX driver, or EMG driver options.
 5 - Emergency option comes prewired from factory with driver in remote housing. 8W of continuous power provided for a minimum of 90 minutes. Must be installed within 30 feet of luminaire using 18 AWG wire. Not available with 0103, DMX, DALI8 or LUTE Driver.
 6 - AWNR/CSMB only available with 010S driver

CONTACT FACTORY FOR MORE OPTIONS.

Canopy

SQ

Square Canopy

	Integral Drivers	Remote Drivers
	010S	DAI8
	0103	DMX
	PHSD	
	010L	
	010G	
	DAI	
	LUTE	

Please see next page for Remote Driver Housing details.

Suspension

2AF

2 Aircraft + Feed Cable



POA

2 Powered Aircraft



Lens

CL

Clear Lens



DL

Diffusing Lens



HC

Honeycomb



SL

Solite Lens



Optics

FXX (15°, 30°, 45°, 60°)
Faceted Reflector



SXX (30°, 45°)
Smooth Reflector



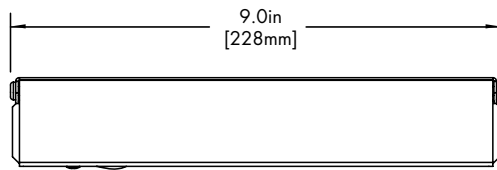
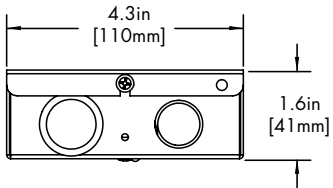
Remote Driver Housing

Depending on the options selected in the order code on page 1, a Remote Driver Housing may be required. This will automatically be generated and put on your order as necessary.

REMOTE DRIVER	MODEL	OUTPUT	CCT	DRIVER	DRIVER OPTIONS
HRM-Housing, Remote	LET44-S-Leto 44 Suspended	Same as Fixture	Same as Fixture	Same as Fixture	Same as Fixture

Maximum mounting distance to luminaire using 18 AWG wire								
PHSD	010S	0103	010L	010G	DALI	DALI8	LUTE	DMX
16'	16'	16'	72'	72'	72'	72'	15'	149'

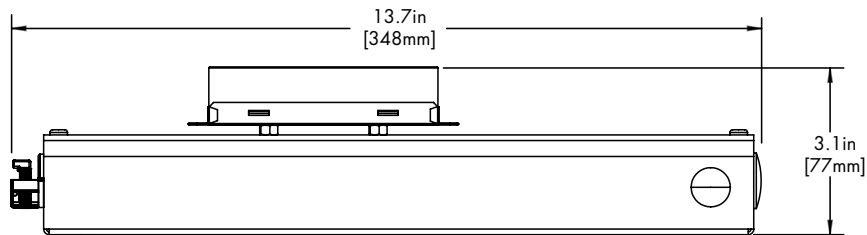
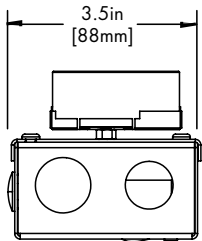
HRM Double



Driver
DALI8
DMX

EMG Emergency Driver

120 minute EMG operation time.



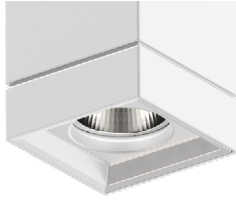
Driver
EMG

Standard Finish

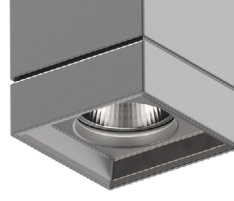
BK
Black



WH
White



SL
Silver



Premium Finish

Two tone with Black Baffle Finish. Any combination may be used for baffle and body finishes.

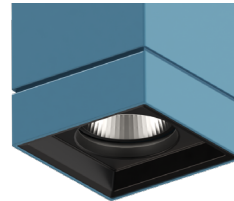
MA
Mocha



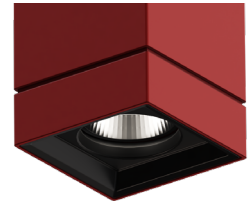
CC
Charcoal



CR
Cerulean



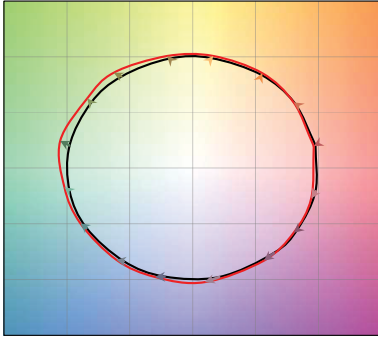
FB
Firebrick



TM-30

2500K

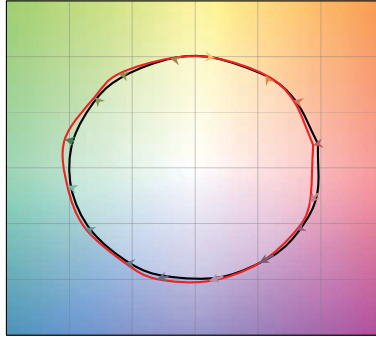
COLOR VECTOR GRAPHIC



— Reference Source — Test Source

2700K

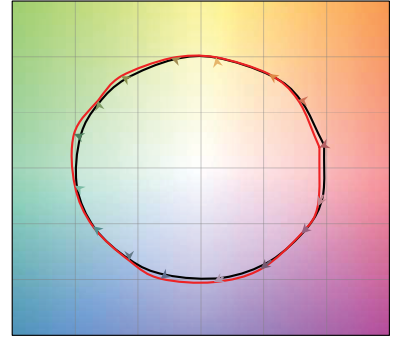
COLOR VECTOR GRAPHIC



— Reference Source — Test Source

3000K

COLOR VECTOR GRAPHIC



— Reference Source — Test Source

3500K

COLOR VECTOR GRAPHIC



— Reference Source — Test Source

4000K

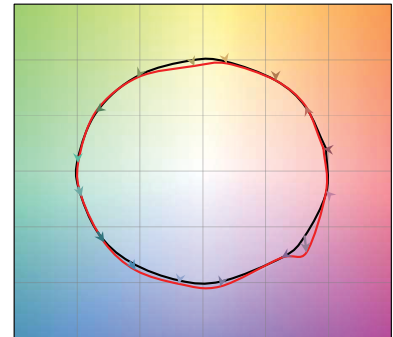
COLOR VECTOR GRAPHIC



— Reference Source — Test Source

6500K

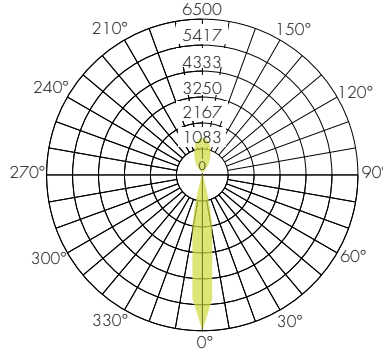
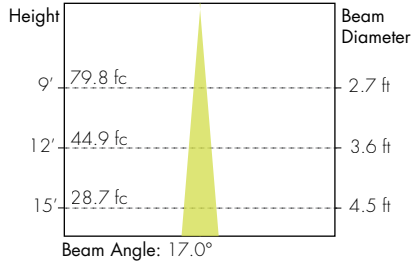
COLOR VECTOR GRAPHIC



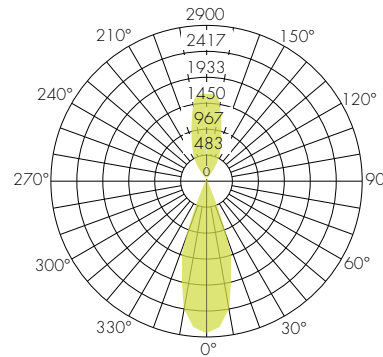
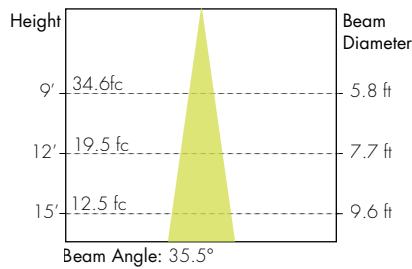
— Reference Source — Test Source

Photometry

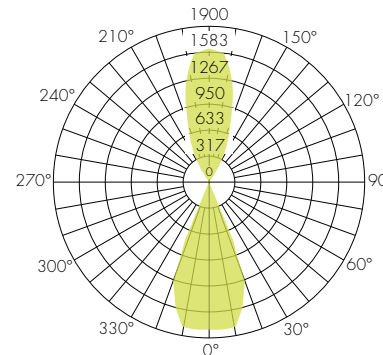
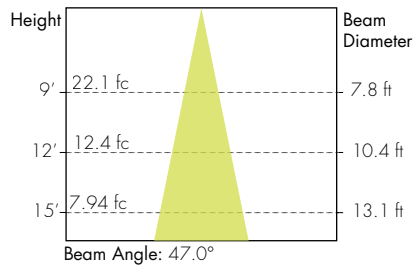
15° Faceted Reflector



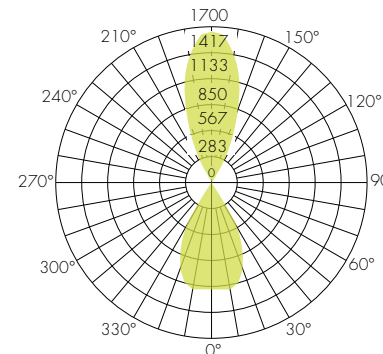
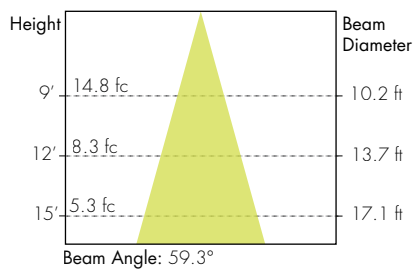
30° Faceted Reflector



45° Faceted Reflector

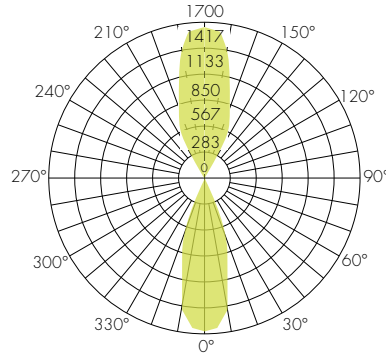
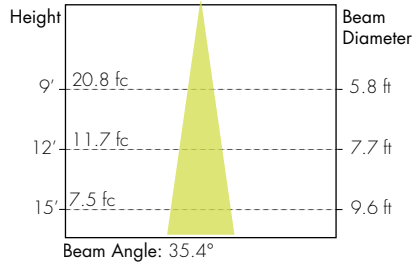


60° Faceted Reflector



Photometry

30° Smooth Reflector



45° Smooth Reflector

