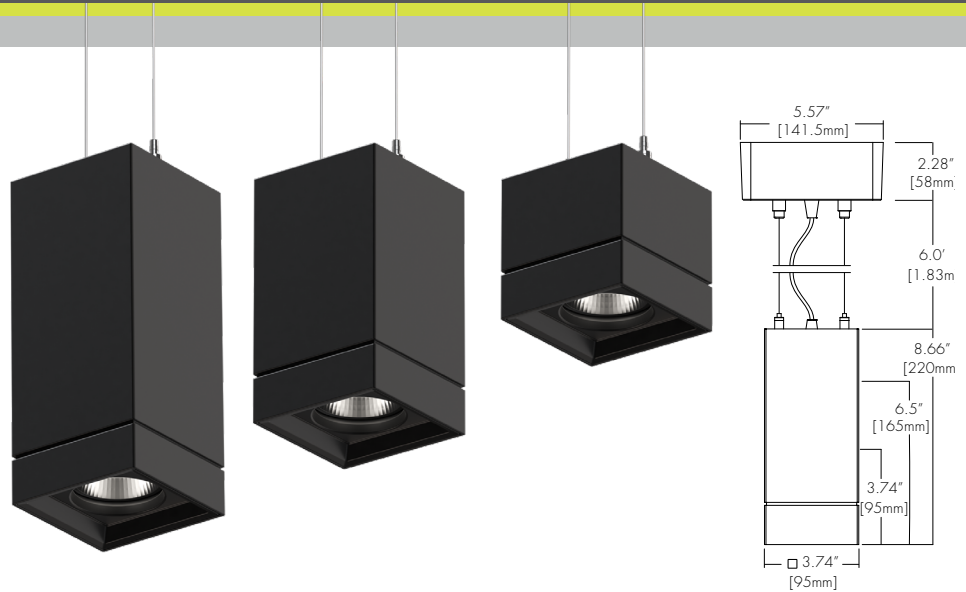


## Features

- Faceted and Smooth reflectors provide beam spreads between 15° to 60°.
- Six output options available up to 3500 lumens.
- Nine driver selections available to cover wide range of applications.
- Five year warranty.

## Finish Options

- White
- Black
- Silver
- Mocha
- Charcoal
- Cerulean
- Firebrick



## Technical Information

OUTPUT OPTIONS	700 lm	1000 lm	1500lm	2000lm	3000lm	3500lm	TM-30					
							CCT	Multiplier	CRI	R <sub>f</sub>	R <sub>g</sub>	R <sub>9</sub>
Fixture wattage	6.1 W	9.1 W	14.9 W	20.0 W	28.5 W	30.0 W	2500K	0.81	92	90	104	77
Delivered Lumen at 3500K	631 lm	998 lm	1469 lm	1939 lm	2969 lm	3386 lm	2700K	0.92	92	91	102	61
Efficacy	103 lm/W	110 lm/W	99 lm/W	97 lm/W	104 lm/W	113 lm/W	3000K	0.97	95	92	102	61
							3500K	1.00	95	93	101	72
							4000K	1.07	95	92	103	68
Center Beam Candlepower (15° Faceted Reflector)	2889 cd	4570 cd	6726 cd	8878 cd	13595 cd	15504 cd	6500K	1.05	96	91	100	89

## Ordering Code

Integral Driver Example: Fixture LET44-S-S-07-25K-F15-NA-WH-WH-SQ-WH-SS2-WH-PHSD-NA

Remote Driver Example: Fixture LET44-S-S-07-25K-F15-NA-WH-WH-SQ-WH-SS2-WH-PHSD-NA-HRM-LET44-S-07-25K-PHSD-NA

### Fixture

MODEL	TYPE	SIZE	OUTPUT	CCT	OPTIC	ACCESSORY	BODY FINISH	BAFFLE FINISH
LET44 - Leto 44	S - Suspended	S - Small <sup>1</sup> M - Medium <sup>2</sup> L - Large	07 - 700 (6.1W) 10 - 1000 (9.1W) 15 - 1500 (14.9W) 20 - 2000 (20.0W) 30 - 3000 (28.5W) 35 - 3500 (30.0W)	25K - 2500K 27K - 2700K 30K - 3000K 35K - 3500K 40K - 4000K 65K - 6500K	F15 - 15 Degree, Faceted F30 - 30 Degree, Faceted F45 - 45 Degree, Faceted F60 - 60 Degree, Faceted S30 - 30 Degree, Smooth S45 - 45 Degree, Smooth	NA - No Accessory CL - Clear Lens DL - Diffusing Lens HC - Honeycomb Louver SL - Solite Lens	Standard WH - White BK - Black SL - Silver  Premium <sup>3</sup> MA - Mocha CC - Charcoal CR - Cerulean FB - Firebrick	Standard WH - White BK - Black SL - Silver  Premium <sup>3</sup> MA - Mocha CC - Charcoal CR - Cerulean FB - Firebrick

CANOPY/ HOUSING	CANOPY FINISH	SUSPENSION TYPE	SUSPENSION FINISH	DRIVER	DRIVER OPTIONS
SQ - Square	Standard WH - White BK - Black SL - Silver  Premium <sup>3</sup> MA - Mocha CC - Charcoal CR - Cerulean FB - Firebrick	2AF - 2AC + Feed Cable SS2 - Solid Stem, 2ft SS3 - Solid Stem, 3ft SS6 - Solid Stem, 6ft HS2 - Hang Straight, 2ft HS3 - Hang Straight, 3ft HS6 - Hang Straight, 6ft POA - 2 Powered Aircraft, 6ft	Standard NA - None <sup>4</sup> CL - Clear WH - White BK - Black SL - Silver <sup>5</sup>  Premium <sup>3</sup> MA - Mocha <sup>5</sup> CC - Charcoal <sup>5</sup> CR - Cerulean <sup>5</sup> FB - Firebrick <sup>5</sup>	PHSD - Forward/Reverse Phase, 1% Dimming, 120V Only 010S - 0-10V, 1% Dimming, 120/277V CL - Clear 0103 - 0-10V, 1% Dimming, 347V Only 010L - EldoLED, 0-10V, Linear, 0.1% Dimming, 120/277V <sup>6</sup> 010G - EldoLED, 0-10V, Log, 0.1% Dimming, 120/277V <sup>6</sup> DALI - EldoLED, DALI Protocol 2, DT-6, 0.1% Dimming, 120/277V <sup>6</sup> DALI8 - EldoLED, DALI Protocol 2, DT-8, 0.1% Dimming, 120/277V <sup>8</sup> LUTE - Lutron Hilume Ecodigital, 1% Dimming, 120V/277V <sup>2,7</sup> DMX - EldoLED, DMX, 0.1% Dimming, 120V/277V <sup>6</sup>	NA - None EMG - Emergency Driver <sup>8,9</sup> CSMB - Casambi <sup>10</sup> AWNRR - Athena <sup>10</sup>

1 - Size Small max output is 1500 lumens.  
2 - Size Medium max output is 2000 lumens.  
3 - Premium finishes may have extended lead times. Custom RALs are available, please consult Inside Sales with specific request.  
4 - Must select NA None when POA 2 Powered Aircraft Suspension is selected.  
5 - These finishes are only available with SSX Solid Stem or HSX Hang Straight Suspension.

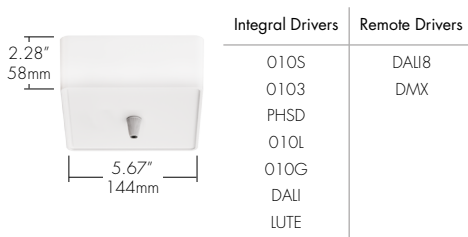
6 - Requires SQ square canopy for integral driver, otherwise remote mounted.  
7 - LUTE driver is not available at 700 lumens.  
8 - All drivers remote mounted when using DALI8 driver, DMX driver, or EMG driver options.  
9 - Emergency option comes prewired from factory with driver in remote housing. 8W of continuous power provided for a minimum of 90 minutes. Must be installed within 30 feet of luminaire using 18 AWG wire. Not available with 0103, DMX, DALI8 or LUTE Driver.  
10 - AWWNR/CSMB only available with 010S driver

CONTACT FACTORY FOR MORE OPTIONS.

## Canopy

### SQ

Square Canopy



Please see next page for Remote Driver Housing details.

## Suspension

### 2AF

2 Aircraft + Feed Cable



### SSX (2', 3', 6' max)

Solid Stem



### HSX (2', 3', 6' max)

Hang Straight Solid Stem



Maximum Slope: 15°

### POA

2 Powered Aircraft



## Lens

### CL

Clear Lens



### DL

Diffusing Lens



### HC

Honeycomb



### SL

Solite Lens



## Optics

### FXX (15°, 30°, 45°, 60°)

Faceted Reflector



### SXX (30°, 45°)

Smooth Reflector



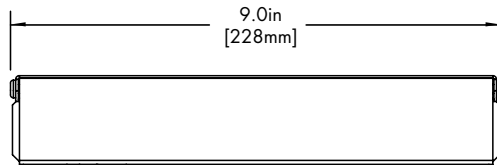
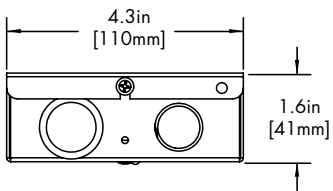
## Remote Driver Housing

Depending on the options selected in the order code on page 1, a Remote Driver Housing may be required. This will automatically be generated and put on your order as necessary.

REMOTE DRIVER	MODEL	OUTPUT	CCT	DRIVER	DRIVER OPTIONS
HRM-Housing, Remote	LET44-S-Leto 44 Suspended	Same as Fixture	Same as Fixture	Same as Fixture	Same as Fixture

Maximum mounting distance to luminaire using 18 AWG wire								
PHSD	010S	0103	010L	010G	DALI	DALI8	LUTE	DMX
16'	16'	16'	72'	72'	72'	72'	15'	149'

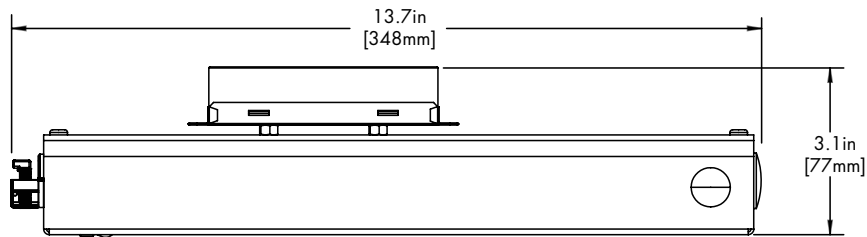
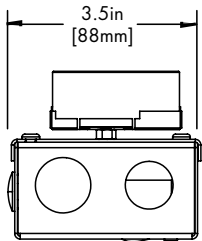
## HRM Double



Driver
DALI8
DMX

## EMG Emergency Driver

120 minute EMG operation time.



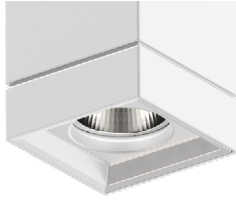
Driver
EMG

## Standard Finish

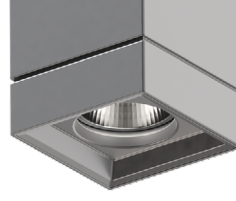
**BK**  
Black



**WH**  
White



**SL**  
Silver



## Premium Finish

Two tone with Black Baffle Finish. Any combination may be used for baffle and body finishes.

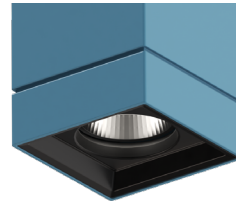
**MA**  
Mocha



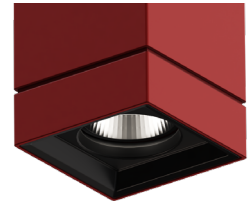
**CC**  
Charcoal



**CR**  
Cerulean



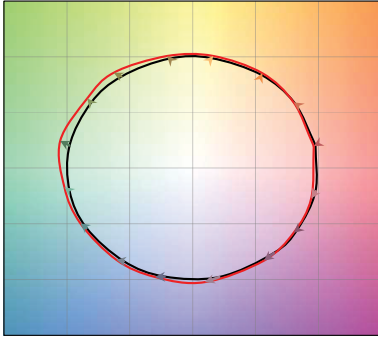
**FB**  
Firebrick



## TM-30

**2500K**

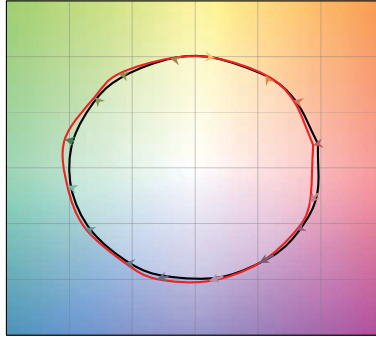
COLOR VECTOR GRAPHIC



— Reference Source — Test Source

**2700K**

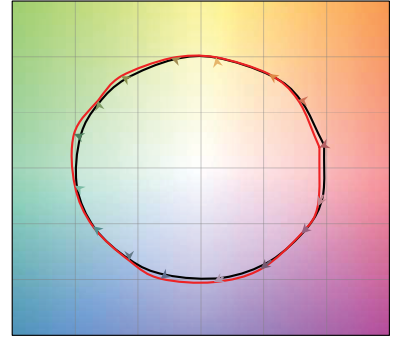
COLOR VECTOR GRAPHIC



— Reference Source — Test Source

**3000K**

COLOR VECTOR GRAPHIC



— Reference Source — Test Source

**3500K**

COLOR VECTOR GRAPHIC



— Reference Source — Test Source

**4000K**

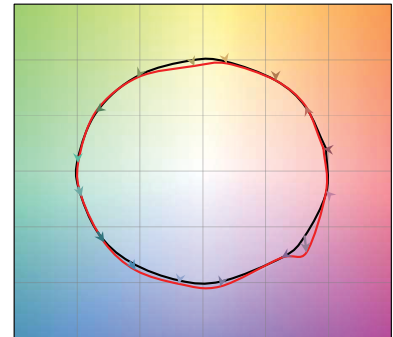
COLOR VECTOR GRAPHIC



— Reference Source — Test Source

**6500K**

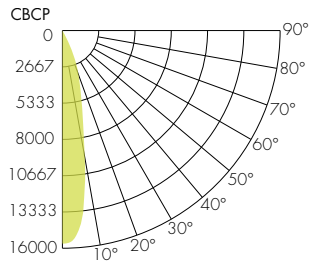
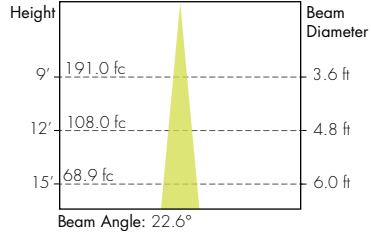
COLOR VECTOR GRAPHIC



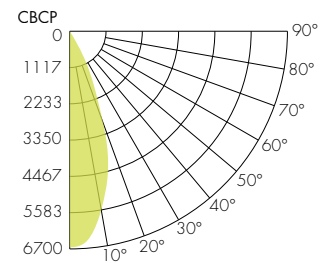
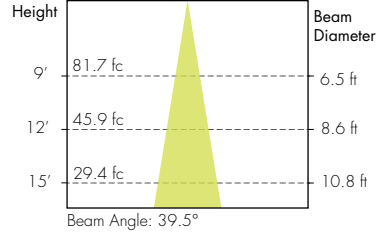
— Reference Source — Test Source

## Photometry

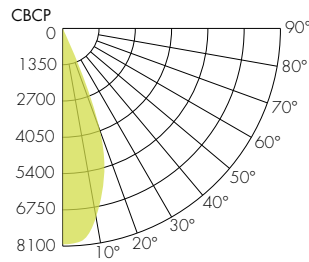
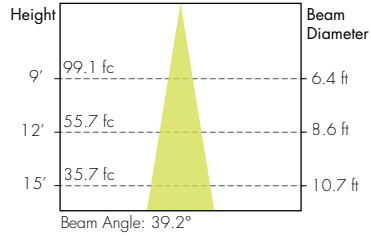
### 15° Faceted Reflector



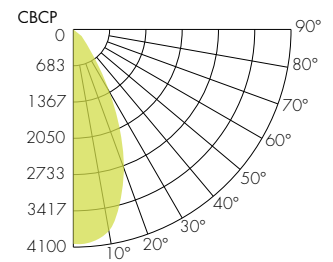
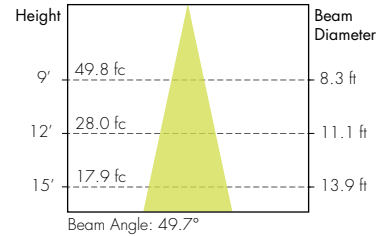
### 30° Smooth Reflector



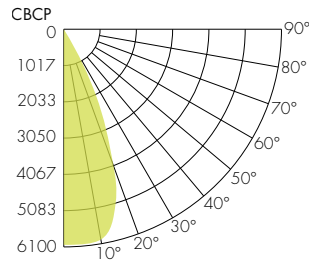
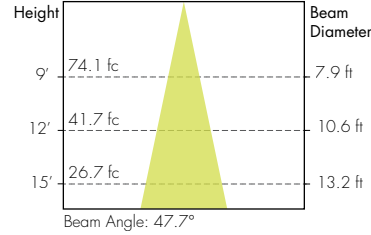
### 30° Faceted Reflector



### 45° Smooth Reflector



### 45° Faceted Reflector



### 60° Faceted Reflector

