

# LETO 44 PLUS

SUSPENDED CYLINDER  
TUNABLE WHITE & WARM DIM

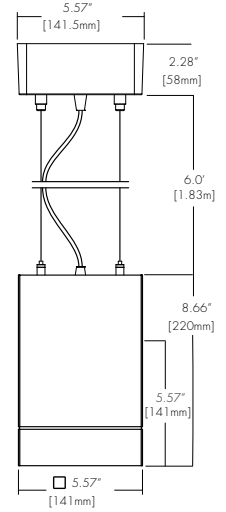


## Features

- Faceted and Smooth metal reflectors provide beam spreads between 10° to 80°.
- Nine drivers selections available to cover wide range of applications.
- Five output options available up to 3000 lumens.
- Five year warranty.

## Finish Options

- White
- Black
- Silver
- Mocha
- Charcoal
- Cerulean
- Firebrick



## Technical Information

TYPE	WD1830					TW2765	
	700 lm	1000 lm	1500 lm	2000 lm	3000 lm	1500 lm	3000 lm
<b>OUTPUT OPTIONS</b>	700 lm	1000 lm	1500 lm	2000 lm	3000 lm	1500 lm	3000 lm
<b>Fixture wattage</b>	7.7 W	12.0 W	17.1 W	22.2 W	32.5 W	20.0 W	25.5 W
<b>Delivered Lumen</b>	694 lm	1079 lm	1542 lm	2004 lm	2929 lm	1636 lm	2018 lm
<b>Efficacy</b>	90 lm/W	90 lm/W	90 lm/W	90 lm/W	90 lm/W	119 lm/W	79 lm/W
<b>Center Beam Candlepower (10° Faceted Reflector)</b>	4946 cd	7689 cd	10989 cd	14281 cd	20873 cd	12834 cd	15831 cd

CCT	CRI	TM-30		
		R <sub>f</sub>	R <sub>g</sub>	R <sub>9</sub>
1800K	94	90	93	61
3000K	94	89	97	72
2700K	91	90	96	59
6500K	93	87	97	73

## Ordering Code

Integral Driver Example: Fixture LET44P-S-S-07-25K-F10-NA-WH-WH-SQ-WH-SS2-WH-PHSD-NA

Remote Driver Example: Fixture LET44P-S-S-07-25K-F10-NA-WH-WH-SQ-WH-SS2-WH-PHSD-NA-HRM-LET44P-S-S-07-25K-PHSD-NA

## Fixture

MODEL	TYPE	SIZE	OUTPUT	CCT	OPTIC	ACCESSORY	BODY FINISH	BAFFLE FINISH
-------	------	------	--------	-----	-------	-----------	-------------	---------------

LET44P - Leto 44 Plus	S - Suspended	S - Small <sup>1</sup> M - Medium	07 - 700 10 - 1000 15 - 1500 20 - 2000 30 - 3000	WD1830 - Warm Dim, 1800K-3000K TW2765 - Tunable White, 2700K-6500K <sup>10, 11, 12</sup>	F10 - 10 Degree, Faceted F18 - 18 Degree, Faceted F30 - 30 Degree, Faceted F45 - 45 Degree, Faceted F60 - 60 Degree, Faceted S30 - 30 Degree, Smooth S45 - 45 Degree, Smooth S80 - 80 Degree, Smooth	NA - No Accessory CL - Clear Lens DL - Diffusing Lens HC - Honeycomb Louver SL - Solite Lens	Standard WH - White BK - Black SL - Silver  Premium <sup>2</sup> MA - Mocha CC - Charcoal CR - Cerulean FB - Firebrick	Standard WH - White BK - Black SL - Silver  Premium <sup>2</sup> MA - Mocha CC - Charcoal CR - Cerulean FB - Firebrick
-----------------------	---------------	--------------------------------------	--	---	---	--	---	---

CANOPY/ HOUSING	CANOPY FINISH	SUSPENSION TYPE	SUSPENSION FINISH	DRIVER	DRIVER OPTIONS
-----------------	---------------	-----------------	-------------------	--------	----------------

RD - Round SQ - Square RTL - Round Flangeless	Standard WH - White BK - Black SL - Silver  Premium <sup>2</sup> MA - Mocha CC - Charcoal CR - Cerulean FB - Firebrick	2AF - 2AC + Feed Cable SS2 - Solid Stem, 2ft SS3 - Solid Stem, 3ft SS6 - Solid Stem, 6ft HS2 - Hang Straight, 2ft HS3 - Hang Straight, 3ft HS6 - Hang Straight, 6ft POA - 2 Powered Aircraft, 6ft	Standard NA - None <sup>3</sup> CL - Clear WH - White BK - Black SL - Silver <sup>4</sup>  Premium <sup>2</sup> MA - Mocha <sup>4</sup> CC - Charcoal <sup>4</sup> CR - Cerulean <sup>4</sup> FB - Firebrick <sup>4</sup>	PHSD - Forward/Reverse Phase, 1% Dimming, 120V Only 010S - 0-10V, 1% Dimming, 120/277V 0103 - 0-10V, 1% Dimming, 347V Only 010L - EldoLED, 0-10V, linear, 0.1% Dimming, 120/277V <sup>5</sup> 010G - EldoLED, 0-10V, Log, 0.1% Dimming, 120/277V <sup>5</sup> DALI - EldoLED, DALI Protocol 2, DT-6, 0.1% Dimming, 120/277V <sup>5</sup> DALI8 - EldoLED, DALI Protocol 2, DT-8, 0.1% Dimming, 120/277V <sup>7</sup> LUTE - Lutron Hilume Ecodigital, 1% Dimming, 120V/277V <sup>5,6</sup> DMX - EldoLED, DMX, 0.1% Dimming, 120V/277V <sup>7</sup>	NA - None EMG - Emergency Driver <sup>7,8</sup> CSMB - Casambi <sup>9</sup> AWN - Athena <sup>9</sup>
---	---	--	--	---	--

1 - Size Small max output is 1500 lumens.  
2 - Premium finishes may have extended lead times. Custom RALs are available, please consult Inside Sales with specific request.  
3 - Must select NA None when POA 2 Powered Aircraft Suspension is selected.  
4 - These finishes are only available with SSX Solid Stem or HSX Hang Straight Suspension.  
5 - Requires SQ square canopy for integral driver, otherwise remote mounted.  
6 - LUTE driver is not available at 700 lumens.  
7 - All drivers remote mounted when using DALI8 driver, DMX driver, or EMG driver options.

8 - Emergency option comes prewired from factory with driver in remote housing. 8W of continuous power provided for a minimum of 90 minutes. Must be installed within 30 feet of luminaire using 18 AWG wire. Not available with 0103, DMX, DALI8 or LUTE Driver.  
9 - AWNR/CSMB only available with 010S driver  
10 - TW2765 only available with 1500/3000 lumens.  
11 - TW2765 only available with Drivers 010L/010G/DALI8/DMX. Not available with EMG driver option.  
12 - TW2765 requires HRM - Remote Power Supply.

CONTACT FACTORY FOR MORE OPTIONS.

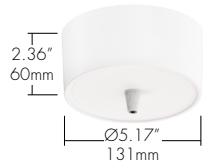
# LETO 44 PLUS

SUSPENDED CYLINDER  
TUNABLE WHITE & WARM DIM

## Canopy

### RD

Round Canopy

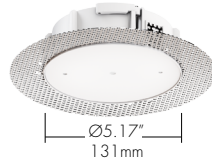


Integral Drivers      Remote Drivers

010S	010L
0103	010G
PHSD	DAI
	DAI8
	LUTE
	DMX

### RTL

Round Trimless Canopy

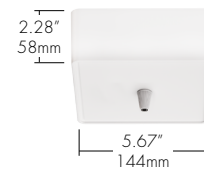


Integral Drivers      Remote Drivers

N/A	010S
	0103
	PHSD
	010L
	010G
	DAI
	DAI8
	LUTE
	DMX

### SQ

Square Canopy



Integral Drivers      Remote Drivers

010S	DAI8
0103	DMX
PHSD	
010L	
010G	
DAI	
LUTE	

Please see next page for Remote Driver Housing details.

## Suspension

### 2AF

2 Aircraft + Feed Cable



### SSX (2', 3', 6' max)

Solid Stem



### HSX (2', 3', 6' max)

Hang Straight Solid Stem



Maximum Slope: 15°

### POA

2 Powered Aircraft



## Lens

### CL

Clear Lens



### DL

Diffusing Lens



### HC

Honeycomb



### SL

Solite Lens



## Optics

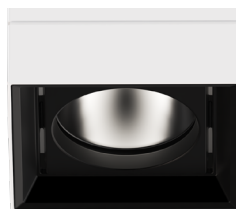
### FXF (10°, 18°, 30°, 45°, 60°)

Faceted Reflector



### SXX (30°, 45°, 80°)

Smooth Reflector



# LETO 44 PLUS

SUSPENDED CYLINDER  
TUNABLE WHITE & WARM DIM

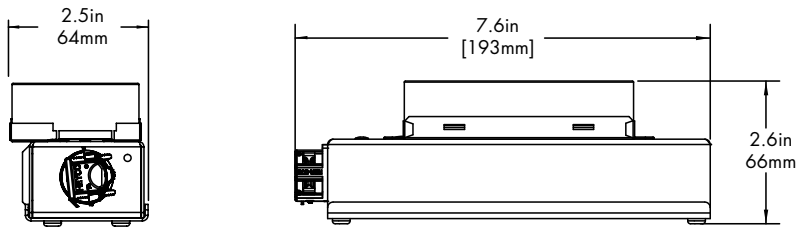
## Remote Driver Housing

Depending on the options selected in the order code on page 1, a Remote Driver Housing may be required. This will automatically be generated and put on your order as necessary.

REMOTE DRIVER	MODEL	OUTPUT	CCT	DRIVER	DRIVER OPTIONS
HRM-Housing, Remote	LET44P-S-Leto 44 Plus Suspended	Same as Fixture	Same as Fixture	Same as Fixture	Same as Fixture

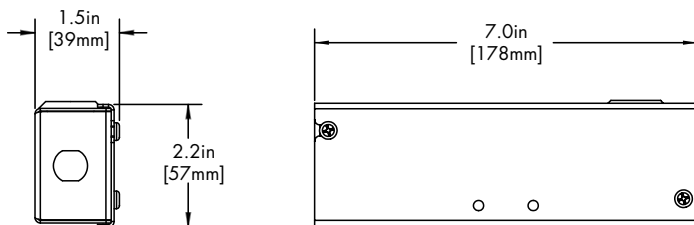
Maximum mounting distance to luminaire using 18 AWG wire								
PHSD	010S	0103	010L	010G	DALI	DALI8	LUTE	DMX
16'	16'	16'	72'	72'	72'	72'	15'	149'

### HRM Single with Externally Mounted Driver



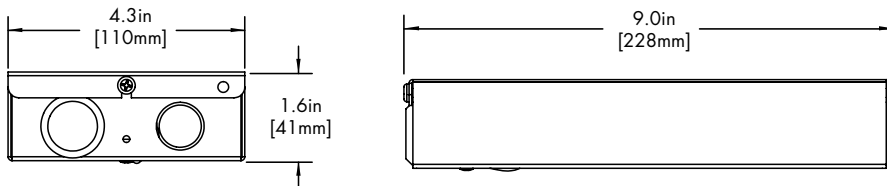
Canopy	+	Driver
RTL	+	0103
RD or RTL	+	010L
RD or RTL	+	010G
RD or RTL	+	DALI
RD or RTL	+	LUTE

### HRM Single



Canopy	+	Driver
RTL	+	PHSD
RTL	+	010S

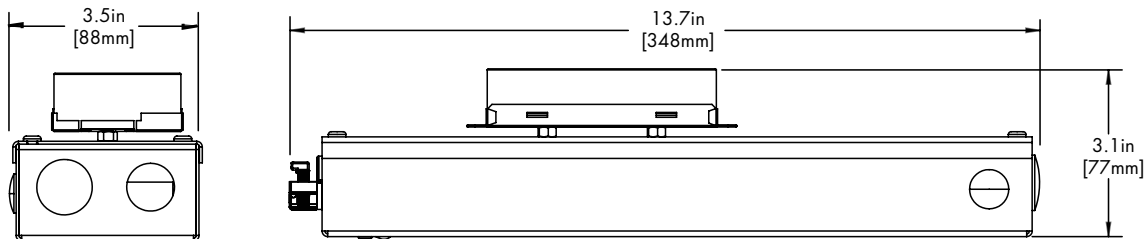
### HRM Double



Driver
DALI8
DMX

### EMG Emergency Driver

120 minute EMG operation time.



Driver
EMG

# LETO 44 PLUS

SUSPENDED CYLINDER  
TUNABLE WHITE & WARM DIM

## Standard Finish

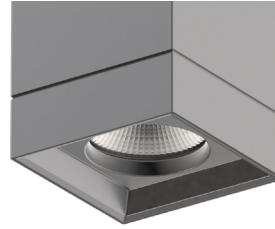
**BK**  
Black



**WH**  
White



**SL**  
Silver



## Premium Finish

Two tone with Black Baffle Finish. Any combination may be used for baffle and body finishes.

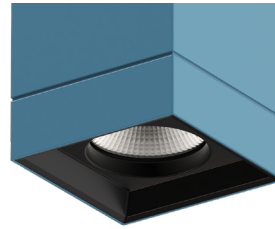
**MA**  
Mocha



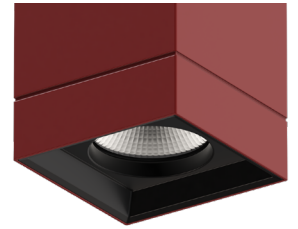
**CC**  
Charcoal



**CR**  
Cerulean



**FB**  
Firebrick



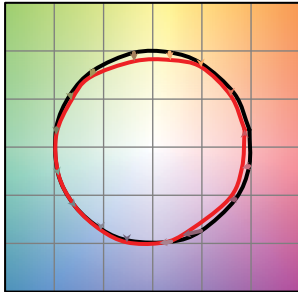
# LETO 44 PLUS

SUSPENDED CYLINDER  
TUNABLE WHITE & WARM DIM

## TM-30

Warm Dim 1800K

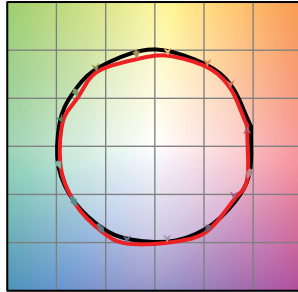
COLOR VECTOR GRAPHIC



— Reference Source — Test Source

Warm Dim 3000K

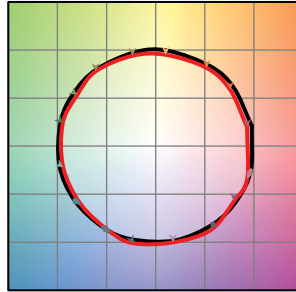
COLOR VECTOR GRAPHIC



— Reference Source — Test Source

Tunable White 2700K

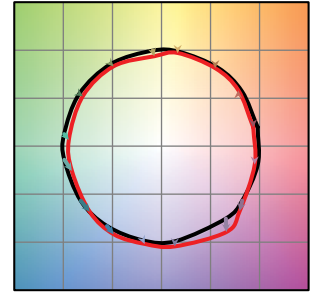
COLOR VECTOR GRAPHIC



— Reference Source — Test Source

Tunable White 6500K

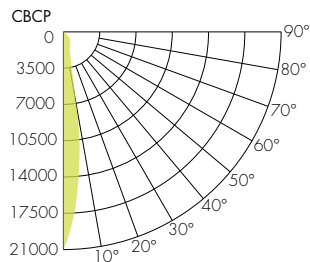
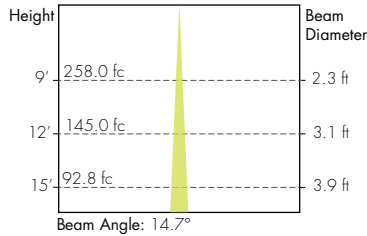
COLOR VECTOR GRAPHIC



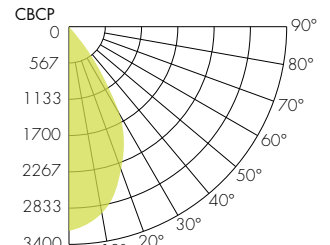
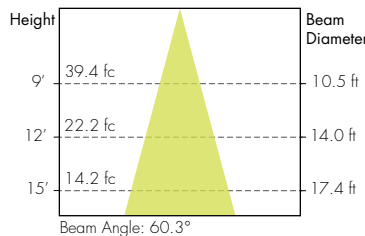
— Reference Source — Test Source

## Photometry

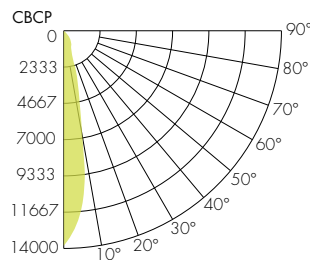
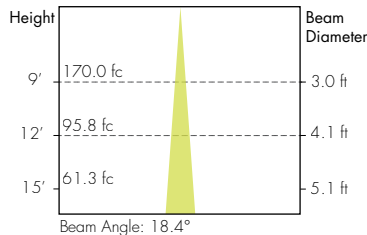
10° Faceted Reflector



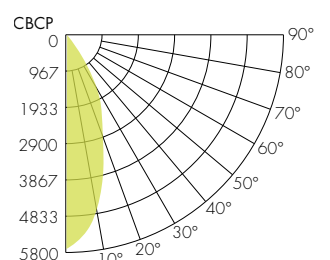
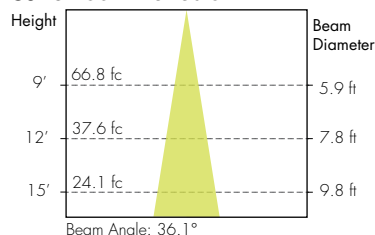
60° Faceted Reflector



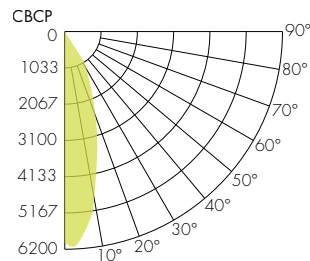
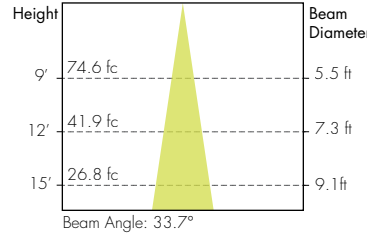
18° Faceted Reflector



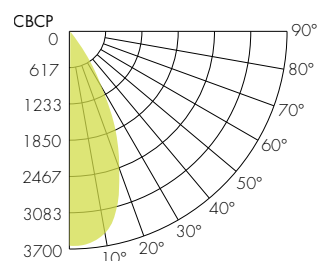
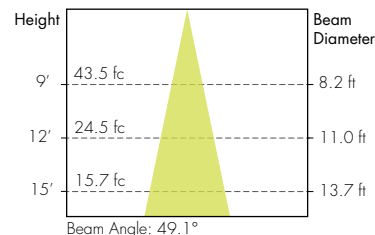
30° Smooth Reflector



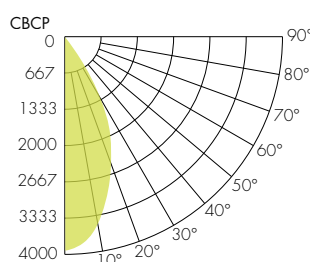
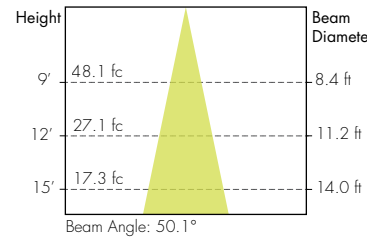
30° Faceted Reflector



45° Smooth Reflector



45° Faceted Reflector



80° Smooth Reflector

