

LETO 44 P UD LRG

DIRECT AND INDIRECT LED PENDANT



Leto 44 Plus P UD MID - Direct and Indirect Pendant LED Light. Solid and striking, the Leto 44 is a cube-shaped pendant with dual suspension cables to prevent spinning. This creative fixture fits into modern spaces perfectly and offers greater versatility thanks to the unique secondary LED facing upwards.

Ordering Code

Fixture	721						
	1	2	3	4	5	6	7
Driver						--	--
	1	2	3	4	5	6	7

Product Specifications

SAMPLE: Fixture **721 - A90 - 61015 - 27 - 0707 - 00 - 01 - 01** | Driver **952 - 01 - 02 - STD - 120 - A90 - 0707**

1 - Model	2 - LED	3 - Optic	4 - CCT	5 - Lumen	6 - Accessory*1	
721 · Leto 44 Plus Direct and Indirect Medium Pendant	A90 · 93+ CRI Accuracy	<i>Direct Faceted</i> 610 · 10° 618 · 18° 630 · 30° 645 · 45° 660 · 60° <i>Direct Smooth</i> 630S · 30° 645S · 45°	<i>Indirect</i> 15 · 15° 24 · 24° 60 · 60°	25 · 2500K 27 · 2700K 30 · 3000K 35 · 3500K 40 · 4000K 65 · 6500K	<i>Direct / Indirect</i> 0707 · 700/700 1010 · 1000/1000 1515 · 1500/1500 <i>For other direct / indirect possibilities please contact factory team</i> <i>Wattage on page 3</i>	00 · No Accessory DL · Diffusing Lens HO · Honeycomb SL · Solite Lens <i>Fixed Diffusing lens for indirect optic</i>

7 - Body Color	8 - Baffle Color	1 - Canopy Style	2 - Canopy Color	3 - Suspension (6' incl.)	
<i>Standard</i> 01 · White 02 · Black 08 · Silver	<i>Premium</i> 52 · Mocha 53 · Charcoal 54 · Cerulean 55 · Firebrick XX · RAL	<i>Standard</i> 01 · White 02 · Black 08 · Silver	<i>Premium</i> 52 · Mocha 53 · Charcoal 54 · Cerulean 55 · Firebrick XX · RAL	952 · Square	<i>Standard</i> 01 · White 02 · Black 08 · Silver
				<i>Premium</i> 52 · Mocha 53 · Charcoal 54 · Cerulean 55 · Firebrick XX · RAL	
				02 · 2 Aircraft + Feed Cable 05 · 2 Powered Aircraft ² <i>Contact Senso for custom length</i>	

4 - Suspension Color	5 - Driver	Dim Level	Dim Level	6 - Voltage	7 - LED	8 - Lumen
00 · None ² 01 · White 02 · Black 03 · Clear XX · Custom	STD · Non Dimming LCS · 0 - 10 Volt Protocol DIM · Phase ³ ELDOLC · EldoLED 0 - 10 Volt DALI · Dali Protocol	N/A 1% 1% 0.1% 0.1%	LUTES · Hilume Ecodigital DMX · Senso ⁴ EMG · Emergency Driver ^{4/5} CSMB · Casambi Wireless Control ^{4/5}	1% 	120 · 120V 277 · 277V 347 · 347V ^{4/6}	Same as Fixture Same as Fixture

*1 available on downlight only

*2 no suspension color option for **05** - 2 Powered Aircraft

*3 120V only

*4 remote mount

*5 second driver required

*6 not available with ELDO, Lutron or DMX

LETO 44 P UD LRG

DIRECT AND INDIRECT LED PENDANT



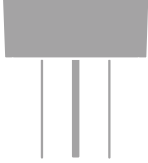
Canopy

Square Canopy: W/L - 5.67" [144mm] / H - 2.28" [58mm]

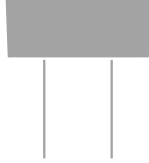
Drivers mounted in the Square Canopy: **STD, LCS, DIM, ELDOLC, DALI, LUTES**

Drivers remote mounted: **DMX, EMG, CSMB**

2 Aircraft Cable
w/ Feed Cable

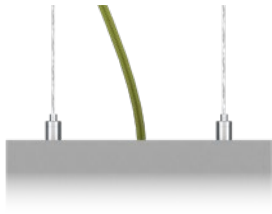


2 Powered
Aircraft Cable

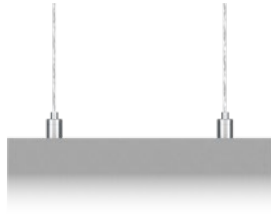


Suspension

Double Aircraft Cable

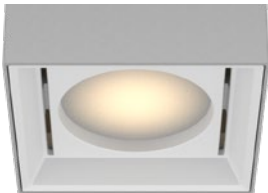


Powered Aircraft

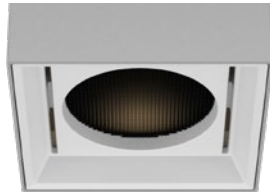


Body Accessories

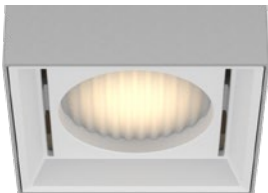
Diffusing Lens



Honeycomb Mesh



Solite Lens



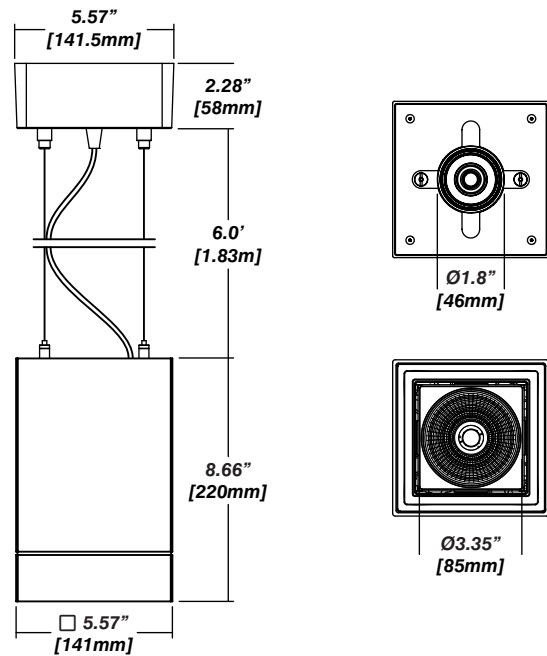
Installation

- The included canopy fits on a standard junction box
- Height adjustable aircraft cable and feed cable included
- Electrical feed cable included

Construction / Finish

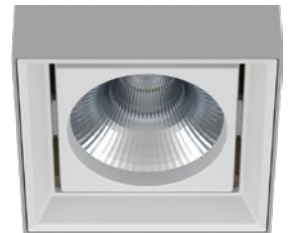
- High quality, scratch resistant powder coated finish in standard, premium or custom colors
- Aluminum extruded Body
- Made in Canada

Dimensions



Reflector

Senso metal spun faceted reflectors are specifically designed to retain as much light as possible. This results in a more power efficient fixture with a higher delivered lumen.



LETO 44 P U D LRG

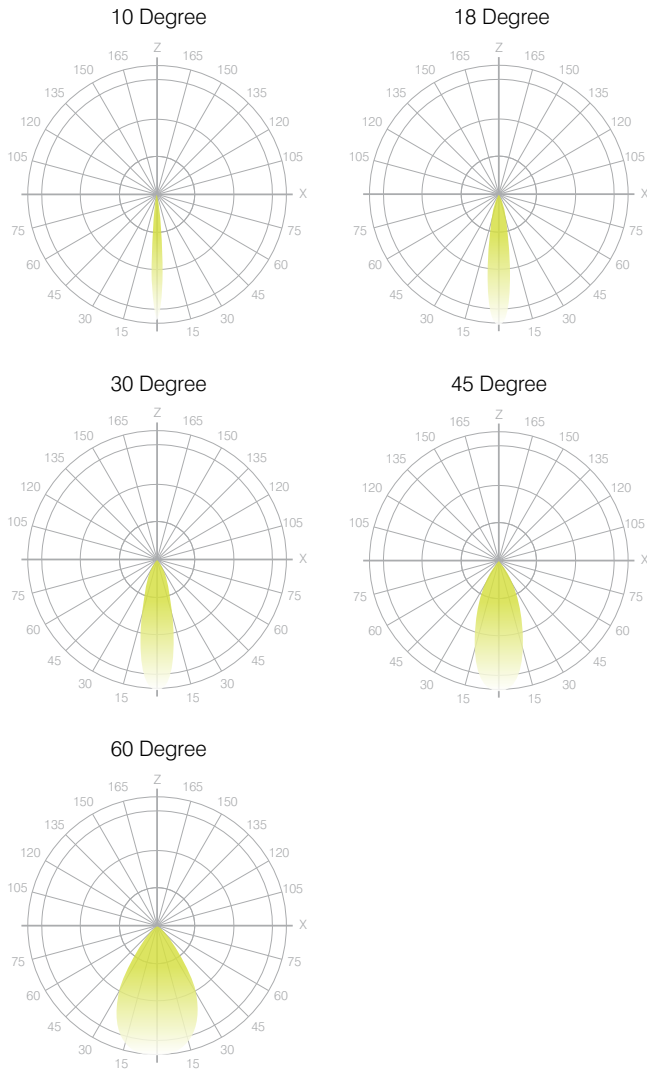
DIRECT AND INDIRECT LED PENDANT



Senso's in-house photometric testing ensures that our lighting design can match your needs precisely. Our Goniophotometer and testing lab produces on-demand photometry files based on any specified fixture, including LM-79 Test reports, IES Files, and CRI/CCT measurements. See Sensolighting.com for more information.

**Full photometric Reports and IES files available for every configuration*

Leto 44 Light Distribution



Color Metrics

TM 30-15

Our clients deserve the best information possible about their lighting choices. That's why Senso has invested in the Illuminating Engineering Society (IES) TM 30-15, a new system that measures an LED light source's color rendering properties. Using Senso's state-of-the-art goniophotometer, this method identifies the optimal light source for your project and helps evaluate the trade-offs between efficacy and color rendering. Senso can provide TM 30-15 data for all of our products.

**Full Color Metric Info Available at Sensolighting.com*

LED Module Performance

Output: Up to 103 lumen/Watt

Efficacy: Color consistency within a 3-MacAdam Ellipse

CCT: 2500K - 6500K

Color Rendering: 93+ CRI

Min. R Values: R⁹ - 60 R^f - 90 R^a - 100

Driver and Power Consumption

Dimming: 1% dimming standard with 0.1% option

Casambi wireless control available

Ripple: Industry leading Low ripple

Efficiency: Power Factor >0.9

Efficiency over 85%

Class 2 output for safety

Installation: Remote mounted

Lumen Option	700/700	1000/1000	1500/1500
Fixture Wattage	15W	20W	30W
Delivered Lumen	1312lm	2070lm	2694lm